

FOR LEASE

Country Oaks Retail Center

9598 SW 114th St., Ocala, FL 34481



BIG BOX AVAILABLE 62,245 SF (DEMISABLE 20K TO 40K SF)

ALEC McNAMARA
Senior Director

Direct +1 407 541 4385
Mobile +1 770 597 5457
alec.mcnamara@cushwake.com

REED FETTER
Senior Associate

Direct +1 407 241 3084
Mobile +1 407 754 5610
reed.fetter@cushwake.com

Cushman & Wakefield U.S., Inc.
20 N Orange Ave., Suite 300
Orlando, FL 32801
+1 407 841 8000
cushmanwakefield.com

PROPERTY *Details*

- **Location:** 9598 SW 114th St. Ocala, FL 34481
- **Availability:** 62,245 SF (Demisable 20,000 SF to 40,000 SF)
- **National Co-Tenants:** Walmart Supercenter, Dollar Tree, Sherwin Williams, Floor Factory
- **Traffic Count:** 32,500 AADT (SR-200)
- **Access:** Full access from lighted intersection on SR-200
- **Signage:** Pylon

PROPERTY *Highlights*

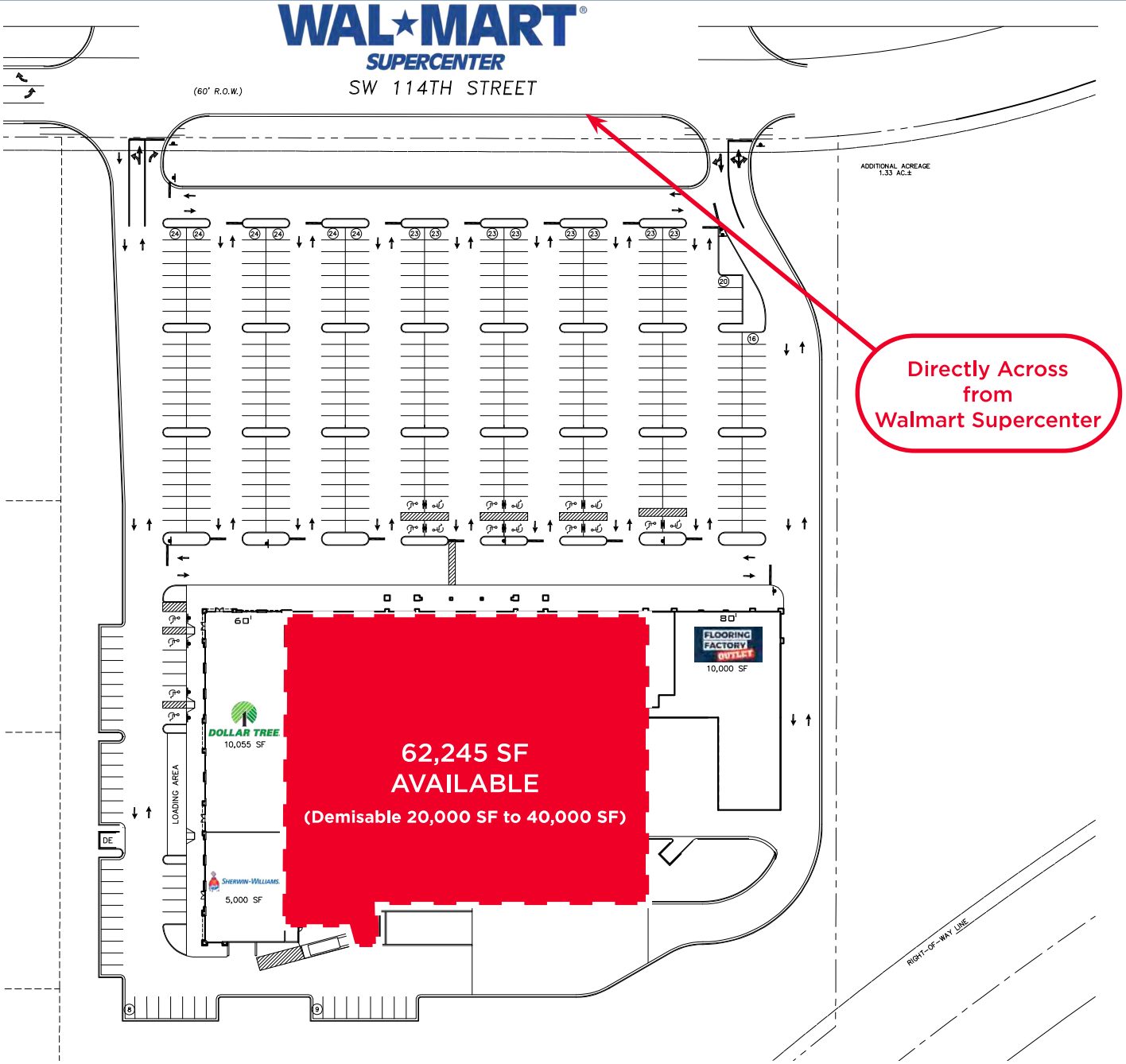
- Country Oaks Retail Center is located adjacent to and shadow-anchored by Walmart Supercenter, creating high demand and retail synergy in the area.
- State Road 200 is the major thoroughfare in Southwest Ocala with ease of access to I-75 in proximity to Ocala International Airport and Marion County Airport.
- On Top Of The World is one of the largest retirement communities in Florida with plans for over 13,000 homes at completion. Located only minutes away from Country Oaks.
- Surrounding area is being heavily developed with single family residences spurring high potential for population growth.

AREA *Demographics*

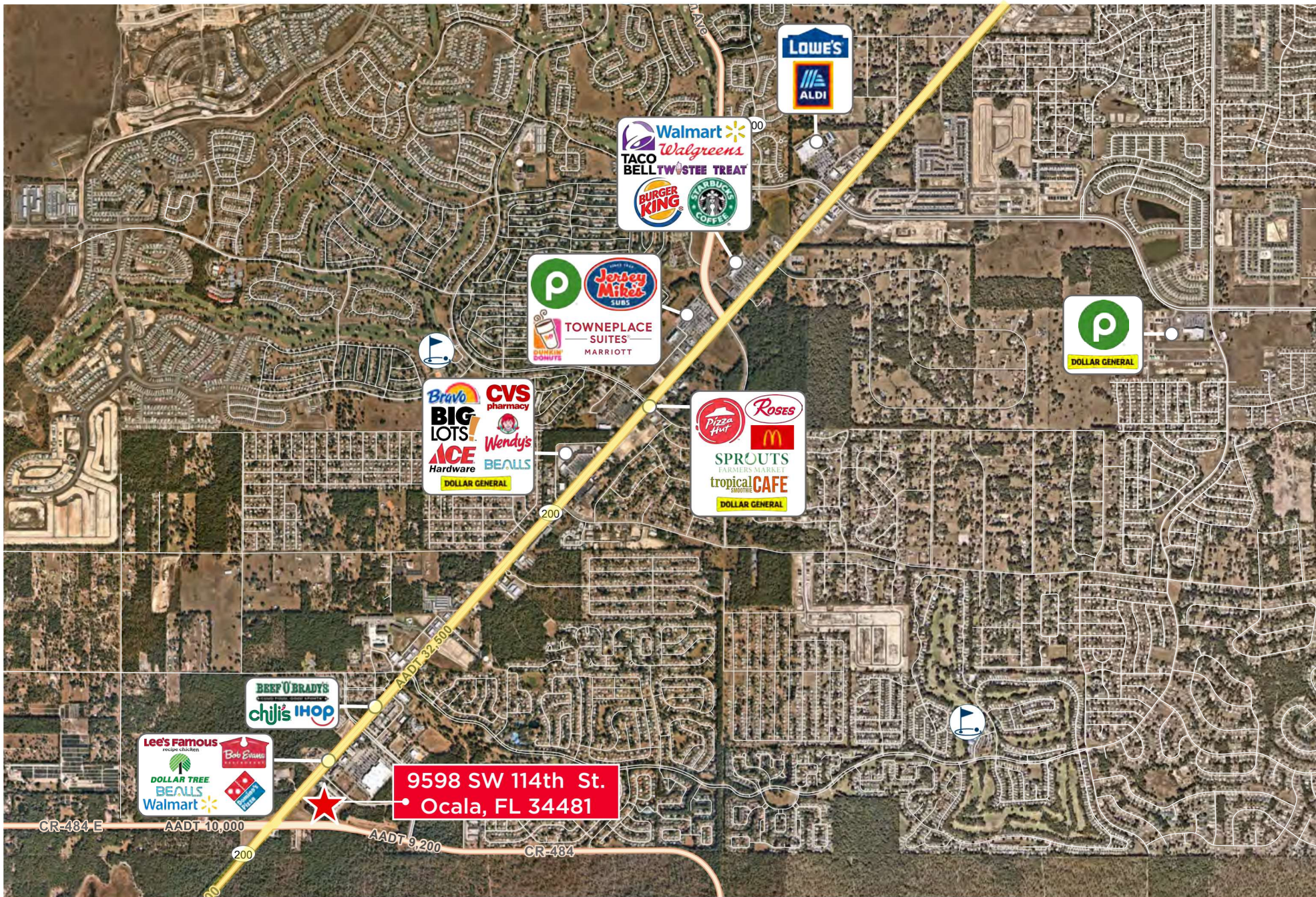
RADIUS	2 MI	3 MI	5 MI
Total Population	7,925	20,871	47,754
Avg HH Income	\$60,864	\$67,442	\$71,735
# of Households	4,548	11,253	23,228



COUNTRY OAKS RETAIL CENTER
Site Plan



COUNTRY OAKS RETAIL CENTER
Area Map



FOR MORE
Information:

ALEC McNAMARA
Senior Director

Direct +1 407 541 4385
Mobile +1 770 597 5457
alec.mcnamara@cushwake.com

REED FETTER
Senior Associate

Direct +1 407 241 3084
Mobile +1 407 754 5610
reed.fetter@cushwake.com



Cushman & Wakefield U.S., Inc.
20 N Orange Ave., Suite 300
Orlando, FL 32801
+1 407 841 8000
cushmanwakefield.com
