



LEGACY AT LAKE PARK NOW LEASING

WEST VALLEY CITY, UTAH



LEGACY AT LAKE PARK NOW LEASING

BUILDING 1
4225 LAKE PARK BLVD.



BUILDING 2
4255 LAKE PARK BLVD.



and expansive window lines that showcase stunning mountain views. This professionally managed property combines elegance, functionality, and accessibility—ideal for businesses seeking a prestigious and well-connected location.

Legacy at Lake Park is a premier office campus featuring two Class A mid-rise buildings totaling approximately 198,465 square feet. Strategically located in the heart of West Valley City, the property offers unmatched access to major interstates and highways, making it highly convenient for the Salt Lake Valley workforce. Set within a 260-acre master-planned community adjacent to a 27-hole golf course, Legacy at Lake Park boasts dramatic two-story lobbies, high-end finishes,

Property Highlights

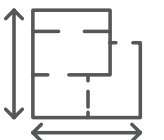
- Two buildings conveniently located just off Bangerter Highway, with close proximity to Salt Lake City International Airport
- Individual suites and full floor opportunities
- 9' ceilings
- Dramatic two-story lobbies
- 4.8/1,000 parking ratio
- Ample window lines
- Spectacular mountain views
- 1st floor shower/lockers - Building 1
- Area amenities include shopping, dining and entertainment options
- \$21.00 / RSF

MIKE RICHMOND
EXECUTIVE MANAGING DIRECTOR
+1 801 303 5434
mike.richmond@cushwake.com

DANA BAIRD, CCIM
EXECUTIVE MANAGING DIRECTOR
+1 801 303 5526
dana.baird@cushwake.com



LOCATION
JUST OFF BANGERTER HIGHWAY

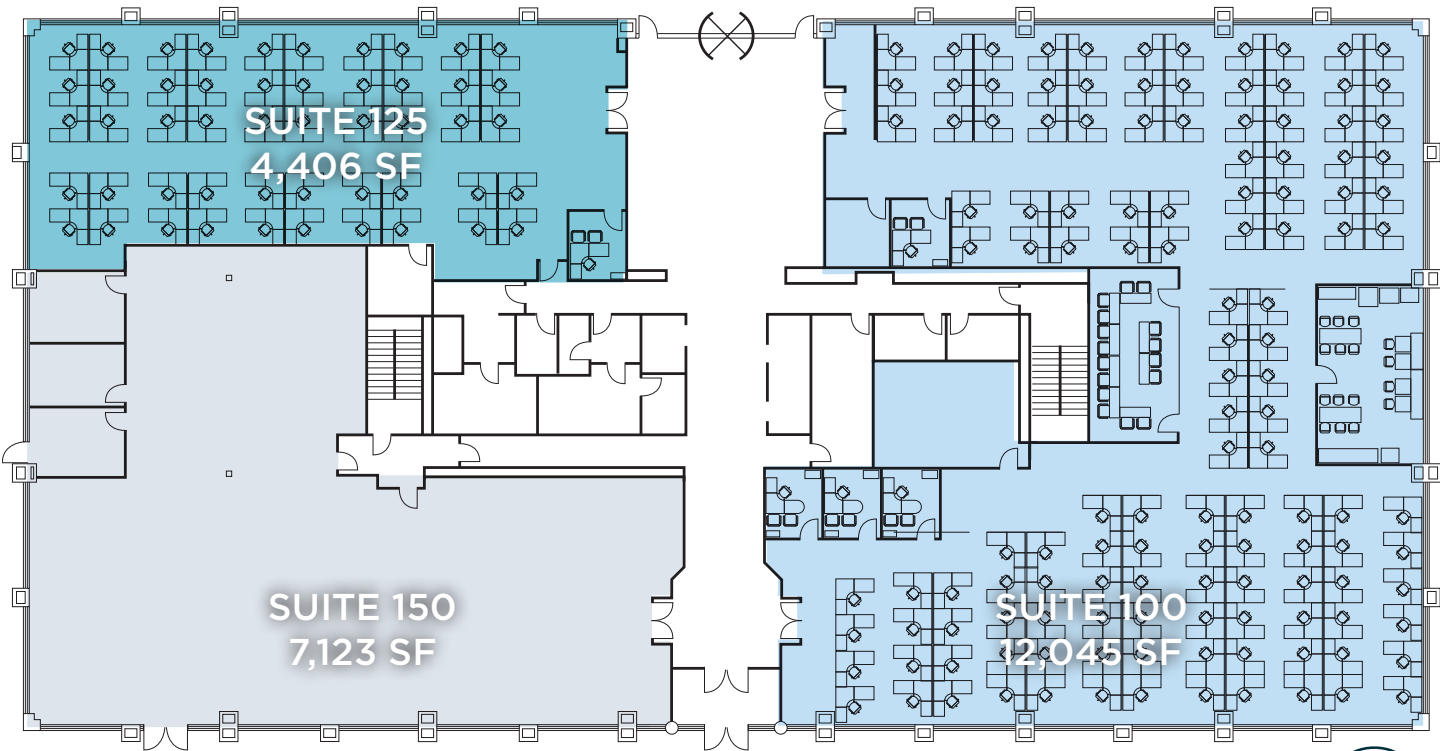


FULL FLOORS
AVAILABLE



9' CEILINGS
AMPLE WINDOW LINES

LEGACY AT LAKE PARK BUILDING 1 • 4225 LAKE PARK BLVD • FLOOR 1



SUITE 100 | 12,045 SF | AVAILABLE IMMEDIATELY
CONFERENCE ROOM, BREAK ROOM, PRIVATE OFFICES, FURNITURE AVAILABLE



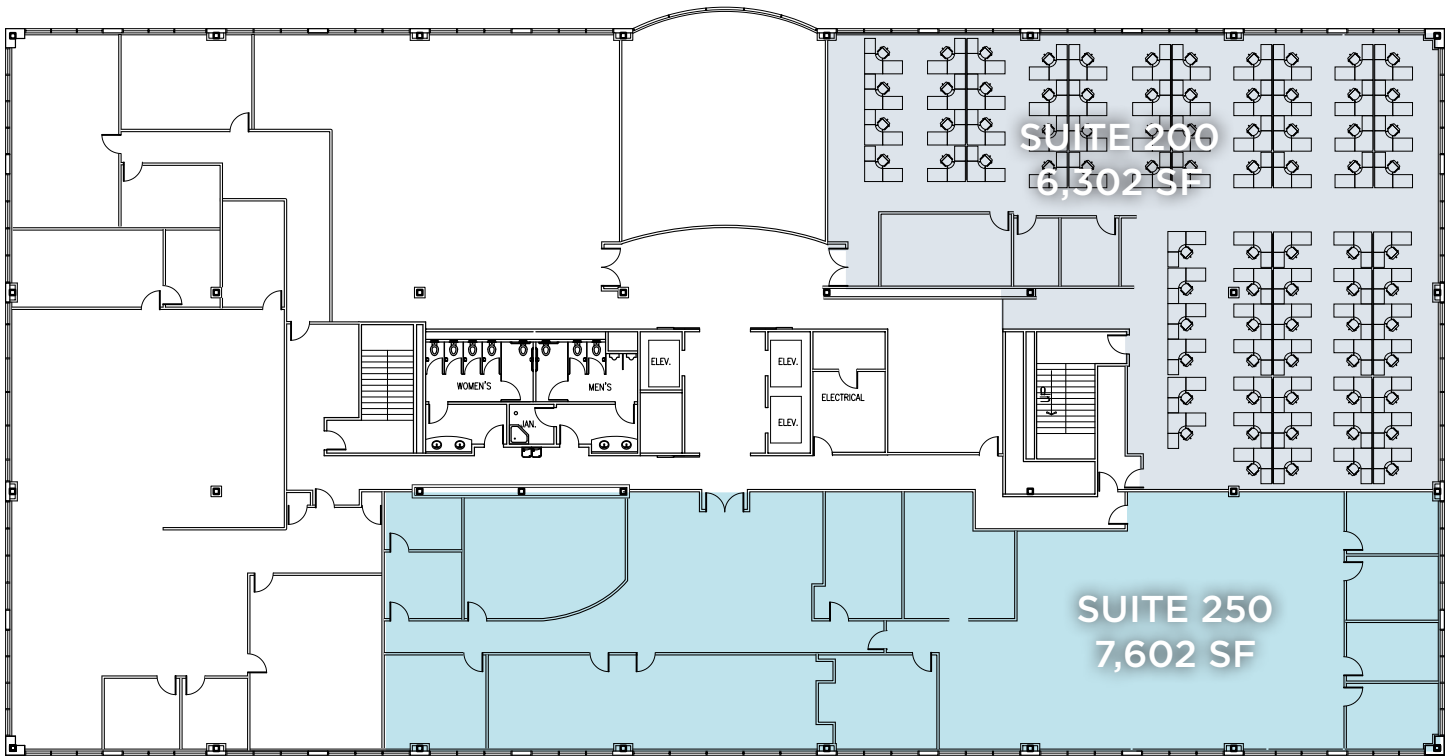
SUITE 125 | 4,406 SF | AVAILABLE IMMEDIATELY
PRIVATE OFFICE, FURNITURE AVAILABLE



SUITE 150 | 7,123 SF | AVAILABLE IMMEDIATELY
SMALL BREAK ROOM, PRIVATE OFFICES



LEGACY AT LAKE PARK BUILDING 1 • 4225 LAKE PARK BLVD • FLOOR 2



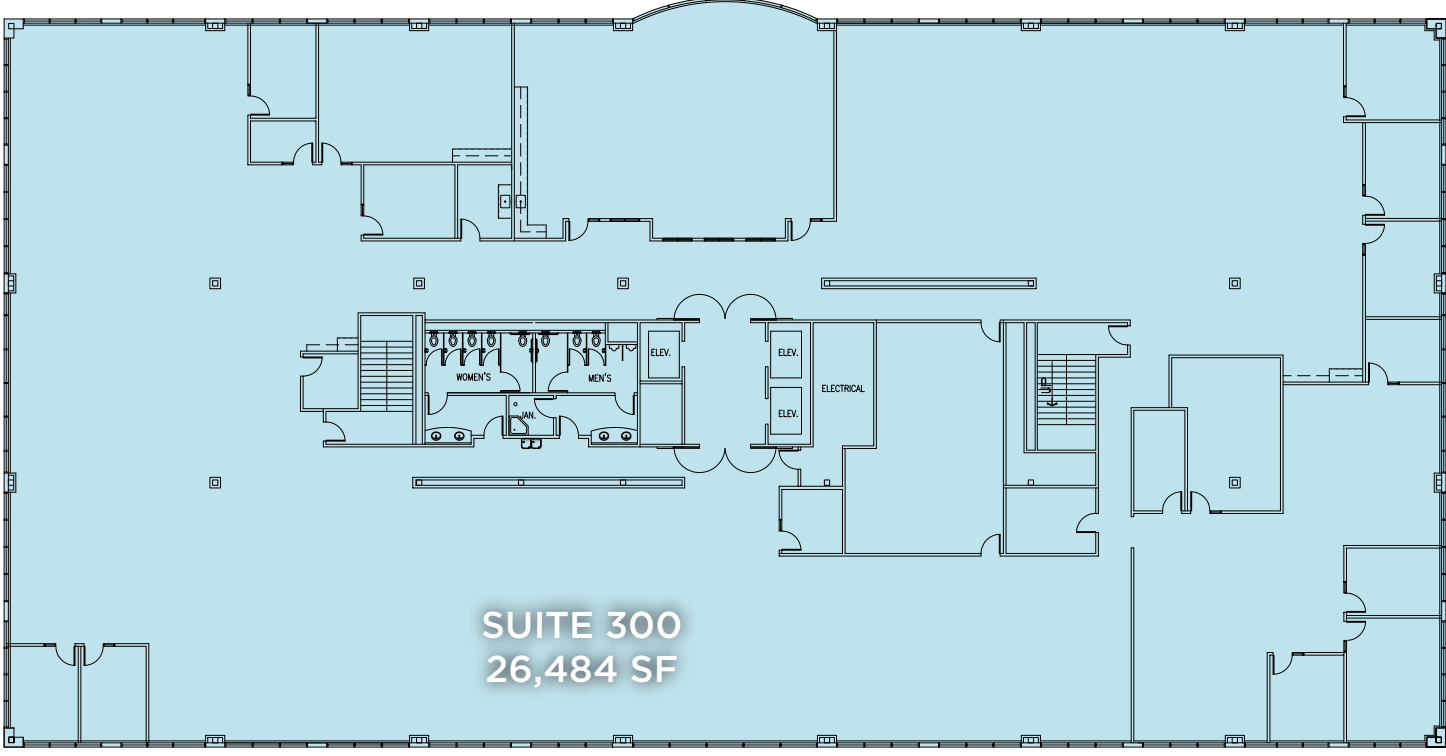
SUITE 200 | 6,302 SF | AVAILABLE IMMEDIATELY

LARGE BULL PEN AREA, PRIVATE OFFICES, FURNITURE AVAILABLE

SUITE 250 | 7,605 SF | AVAILABLE APRIL 1, 2026



LEGACY AT LAKE PARK BUILDING 1 • 4225 LAKE PARK BLVD • FLOOR 3

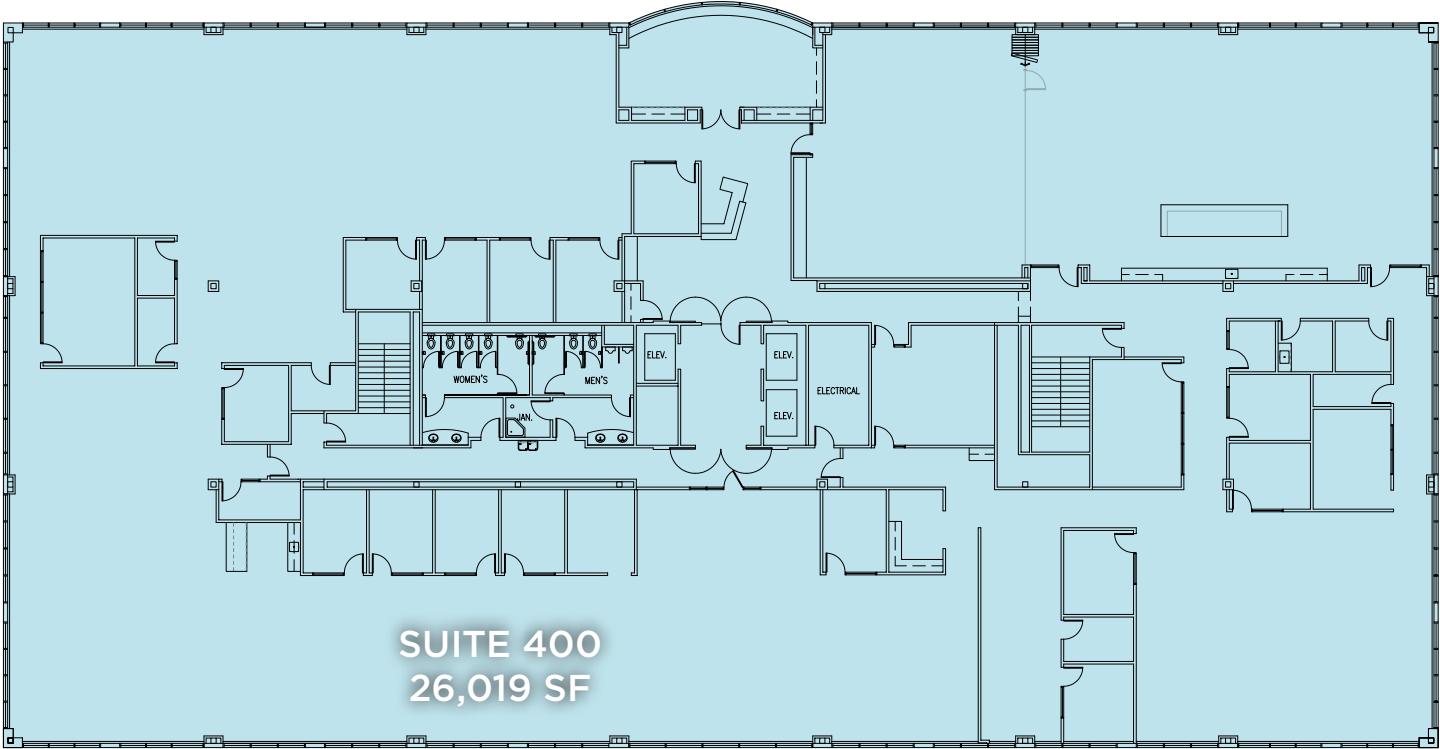


SUITE 300 | 26,484 SF | AVAILABLE IMMEDIATELY

CONFERENCE ROOMS, PRIVATE OFFICES, BREAK ROOM



LEGACY AT LAKE PARK BUILDING 1 • 4225 LAKE PARK BLVD • FLOOR 4

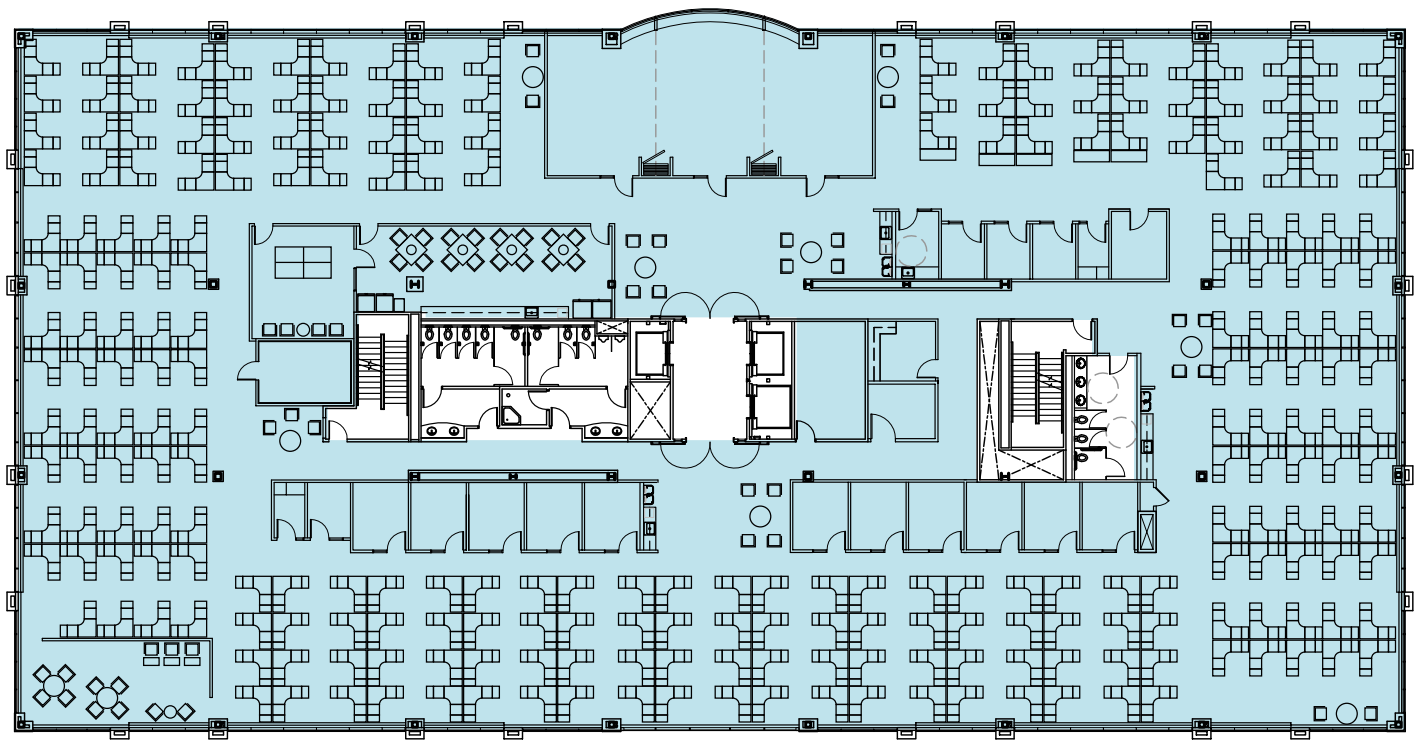


SUITE 400
26,019 SF

SUITE 400 | 26,019 SF | AVAILABLE IMMEDIATELY
CONFERENCE ROOMS, BREAK ROOM, PRIVATE OFFICES



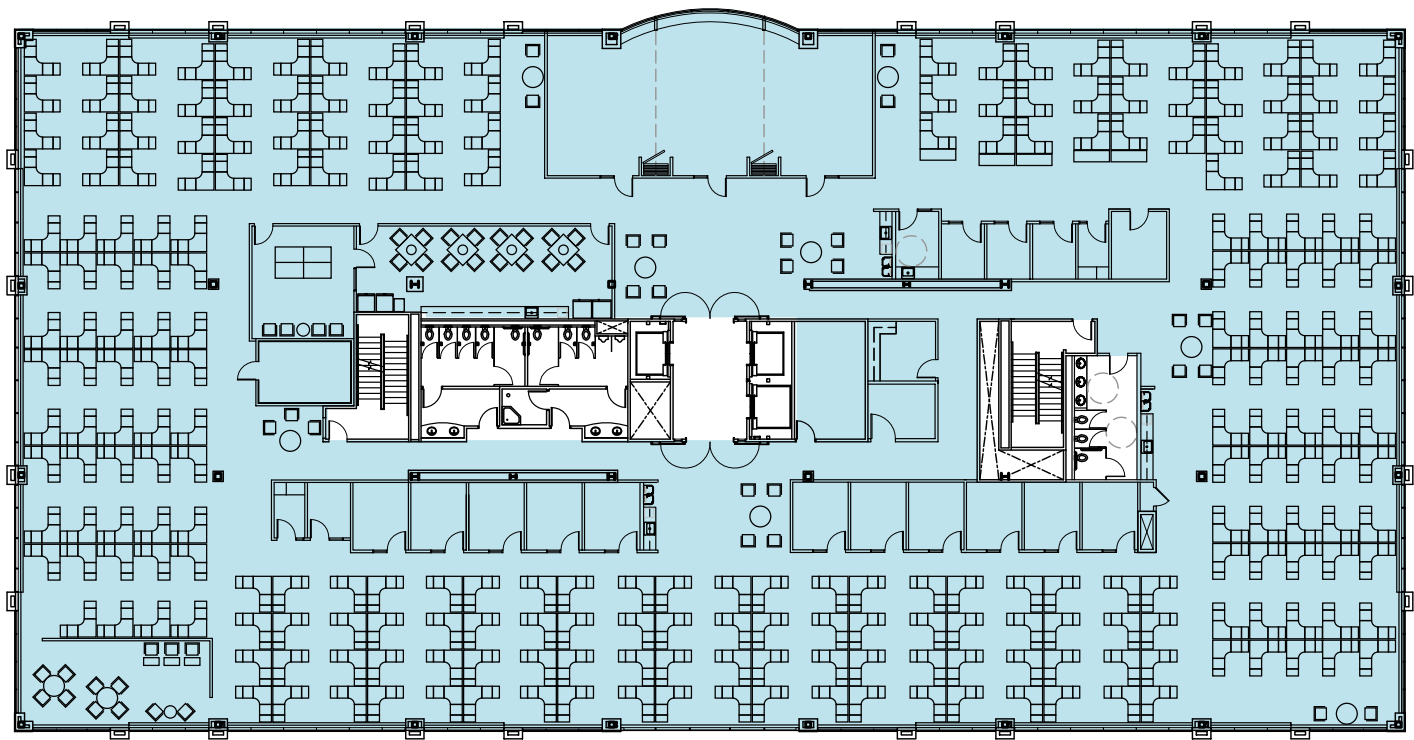
LEGACY AT LAKE PARK BUILDING 2 • 4255 LAKE PARK BLVD • FLOOR 3



SUITE 300 | 24,970 SF | AVAILABLE IMMEDIATELY
CONFERENCE ROOMS, BREAK ROOM, PRIVATE OFFICES, FULLY FURNISHED



LEGACY AT LAKE PARK BUILDING 2 • 4255 LAKE PARK BLVD • FLOOR 4



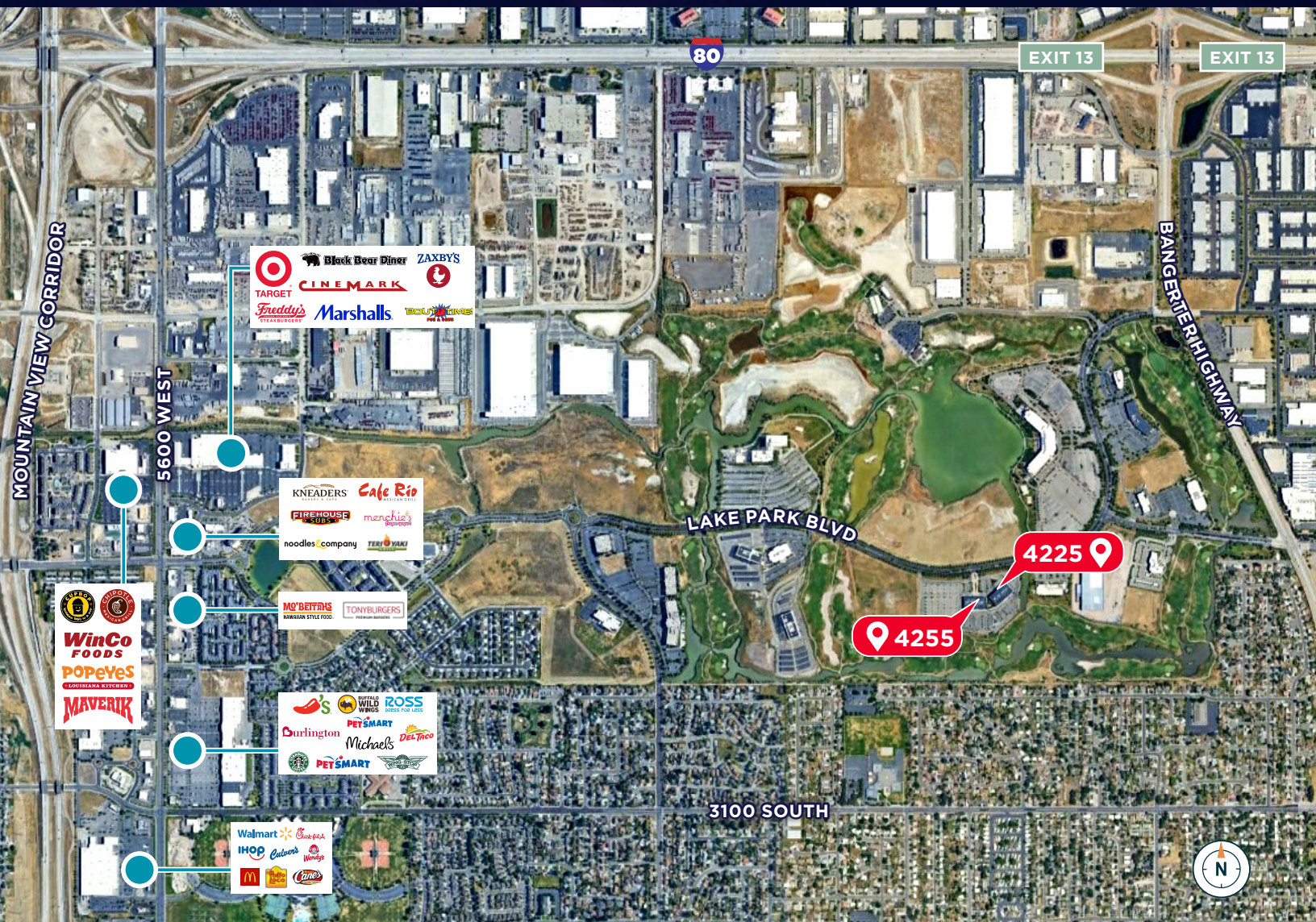
SUITE 400 | 24,970 SF | AVAILABLE IMMEDIATELY
CONFERENCE ROOMS, BREAK ROOM, PRIVATE OFFICES, FULLY FURNISHED



LEGACY AT LAKE PARK NOW LEASING

4225 & 4255 LAKE PARK BLVD.

WEST VALLEY CITY, UTAH



I-80, I-15,
Bangerter Highway and
Mountain View Corridor
access within minutes.



Several Dining,
Shopping and
Entertainment options
directly west.



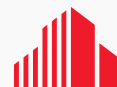
Salt Lake City
International Airport
9 minutes/5 miles.



Downtown
Salt Lake City
17 minutes/9 miles.

MIKE RICHMOND
EXECUTIVE MANAGING DIRECTOR
+1 801 303 5434
mike.richmond@cushwake.com

DANA BAIRD, CCIM
EXECUTIVE MANAGING DIRECTOR
+1 801 303 5526
dana.baird@cushwake.com



**CUSHMAN &
WAKEFIELD**

©2025 Cushman & Wakefield. All rights reserved. The information contained in this communication is strictly confidential. This information has been obtained from sources believed to be reliable but has not been verified. NO WARRANTY OR REPRESENTATION, EXPRESS OR IMPLIED, IS MADE AS TO THE CONDITION OF THE PROPERTY (OR PROPERTIES) REFERENCED HEREIN OR AS TO THE ACCURACY OR COMPLETENESS OF THE INFORMATION CONTAINED HEREIN, AND SAME IS SUBMITTED SUBJECT TO ERRORS, OMISSIONS, CHANGE OF PRICE, RENTAL OR OTHER CONDITIONS, WITHDRAWAL WITHOUT NOTICE, AND TO ANY SPECIAL LISTING CONDITIONS IMPOSED BY THE PROPERTY OWNER(S). ANY PROJECTIONS, OPINIONS OR ESTIMATES ARE SUBJECT TO UNCERTAINTY AND DO NOT SIGNIFY CURRENT OR FUTURE PROPERTY PERFORMANCE.