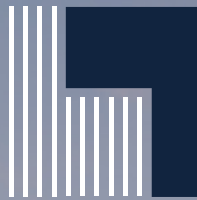


SANTA CLARA, CA

BUNKER HILL LANE / TASMAN DRIVE



# THE QUAD AT TASMAN

RENOVATIONS COMING SOON

TENANT NAME

6

WHERE INNOVATION  
MEETS OPPORTUNITY

±6,449 – ±102,267 SF OF R&D/OFFICE SPACE AVAILABLE



# PROPERTY HIGHLIGHTS

Welcome to The Quad at Tasman, a premier R&D/Office campus strategically located in the heart of Silicon Valley's Golden Triangle. This seven-building campus features state-of-the-art facilities tailored to the needs of innovative tech companies. With cutting-edge amenities and flexible spaces, The Quad at Tasman is designed to support and inspire the next generation of tech pioneers.



3.4/1,000 SF parking ratio with 28 EV charging stations



Ample power at 1,600-2,500 amps 480v per building



Silicon Valley Power cost savings and reliability



14' deck-to-deck with option for 10' drop ceiling



Expansive outdoor amenity space



1 Oz Coffee on-site café serving Monday-Saturday  
**Now Serving Food**



Onsite fitness center



Convenient access to transportation and amenities



ML - light industrial zoning

01.

410,409 SF across 7 buildings

02.

Availability between ±4,786 to ±102,267 SF

03.

Freestanding building identity with building and monument signage



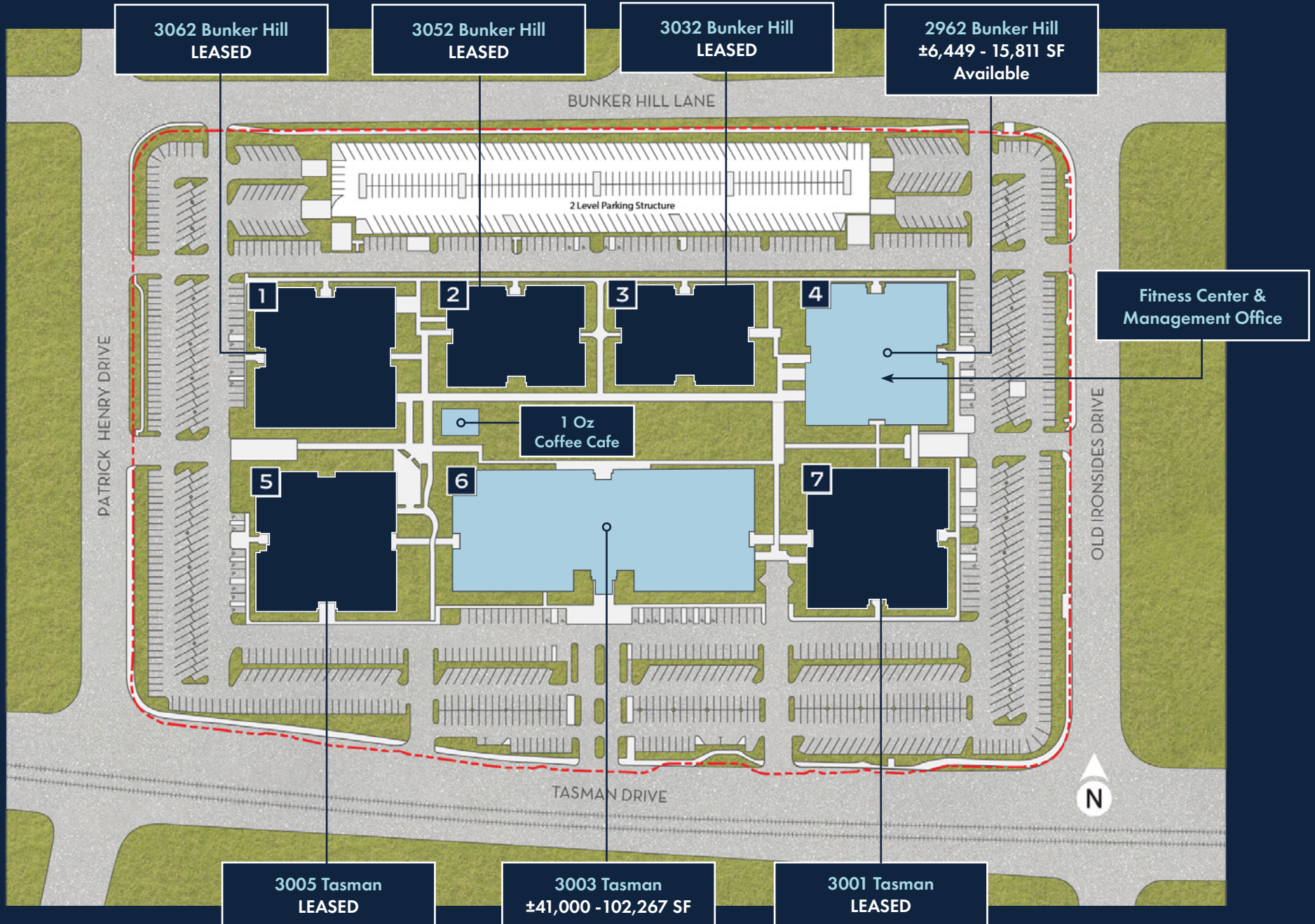
**WELL  
CERTIFIED**

# WORK BEYOND THE WALLS

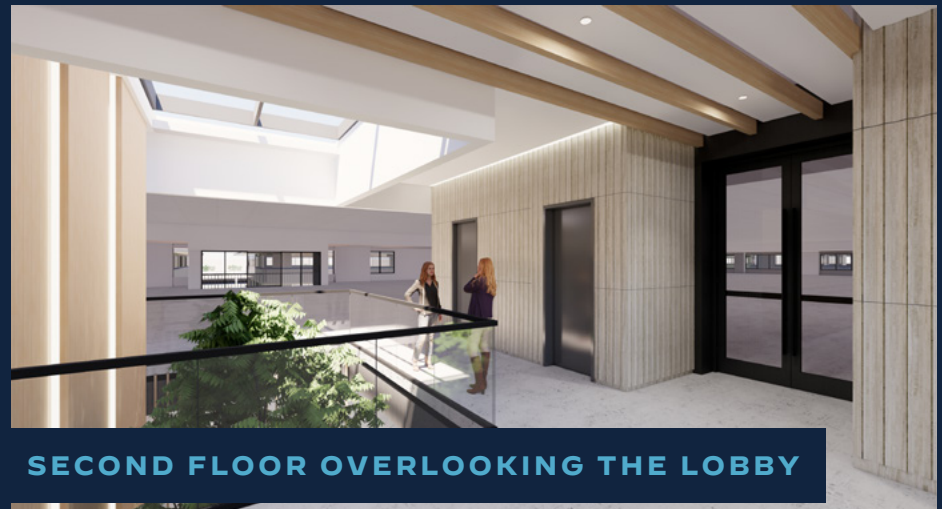
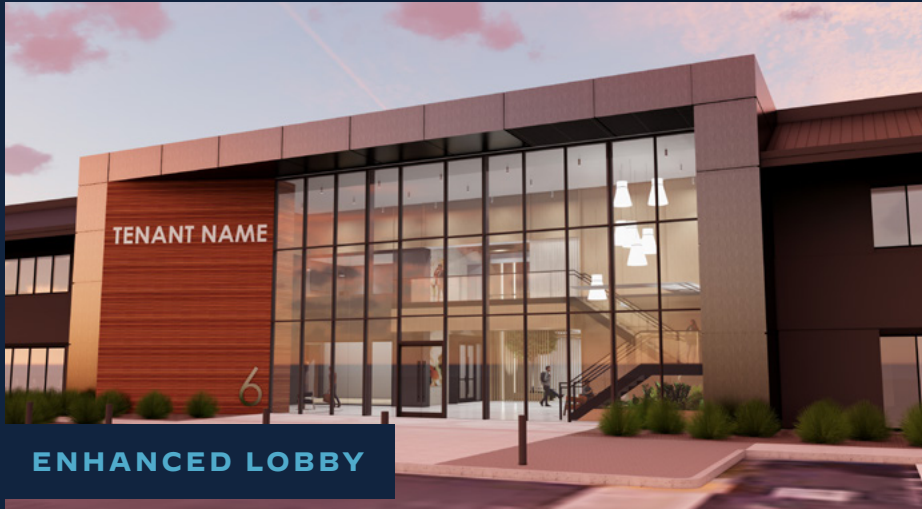
The expansive outdoor space offers seamless WiFi connectivity and a blend of relaxation and productivity. Tenants can enjoy a café, game and fitness areas, and versatile meeting and collaboration zones, perfect for working or unwinding in a vibrant, open-air setting.



# SITE PLAN



# 3003 TASMAN – PLANNED RENOVATIONS

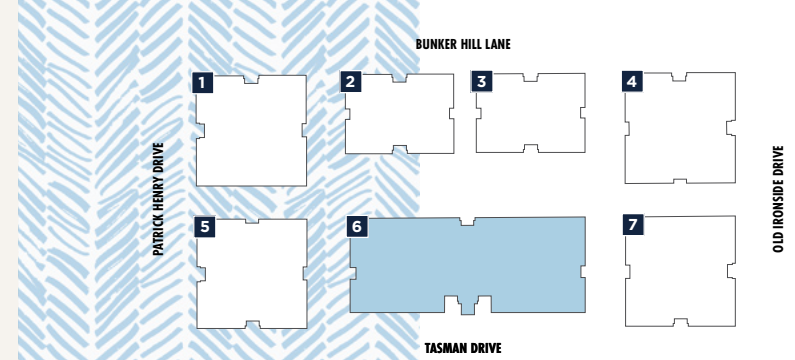


# AS-BUILT FLOOR PLAN

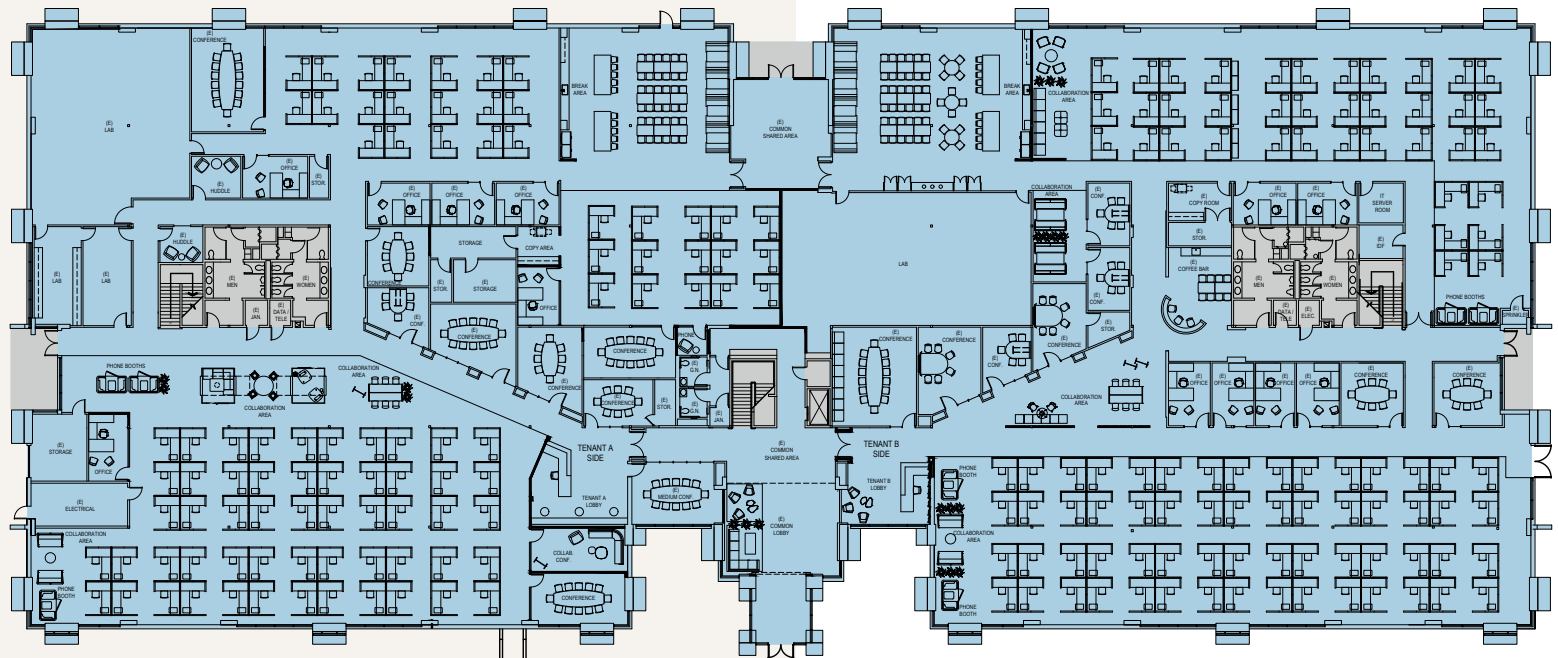
## BUILDING 6

3003 TASMAN

- 102,267 RSF
- Power: 2,000 amps @ 277/480v
- HVAC: 250 tons
- Grade loading
- Fully furnished plug-n-play



## FLOOR 1



**Suite 06-100**  
Available Now

Work Stations: 198  
Office/Huddle: 14  
Conference: 18

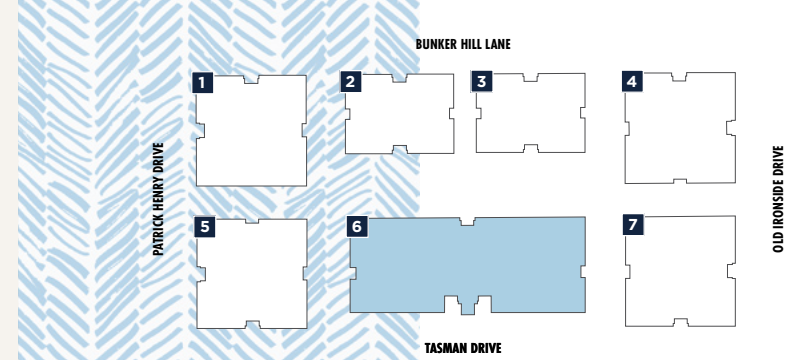
\*Conceptual floor plan with furniture

# FLOOR PLAN

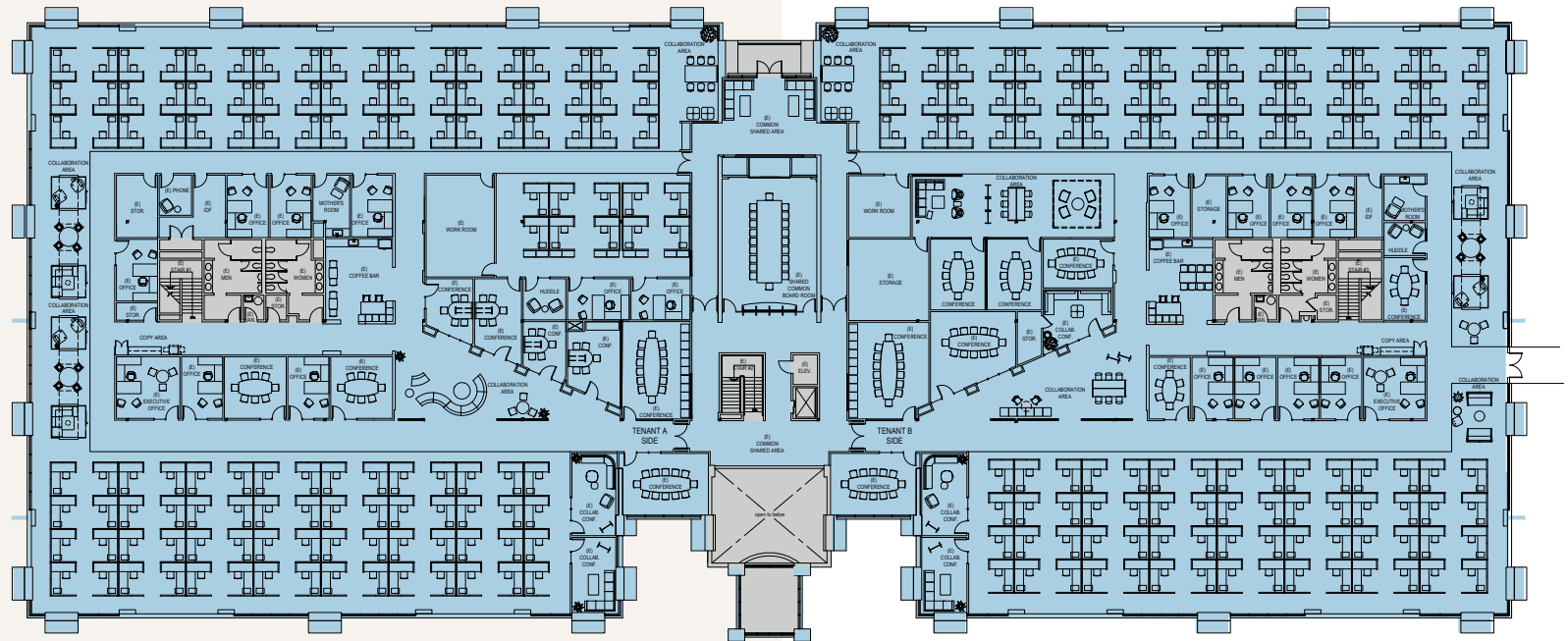
## BUILDING 6

3003 TASMAN

- 102,267 RSF
- Power: 2,000 amps @ 277/480v
- HVAC: 250 tons
- Grade loading
- Fully furnished plug-n-play



## FLOOR 2



**Suite 06-100**  
Available Now

Work Stations: 242  
Office/Huddle: 20  
Conference: 21

\*Conceptual floor plan with furniture



# FLOOR PLAN

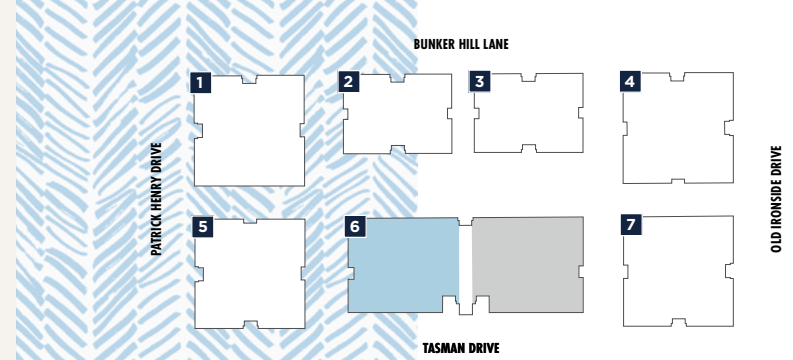
## BUILDING 6

3003 TASMAN

### Demising Options

TENANT A: ±76,500 SF

TENANT B: ±25,500 SF



### PLANNED LOBBY RENOVATIONS

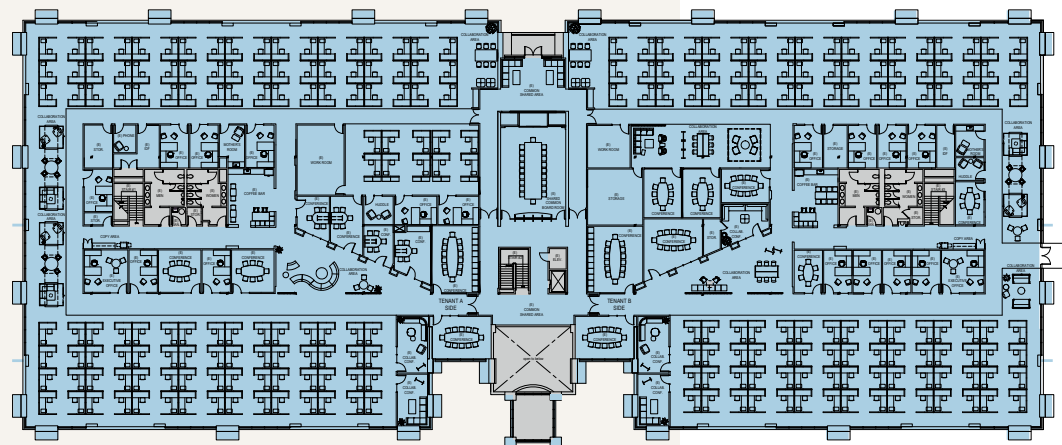
#### FLOOR 1



TENANT A  
±25,500 SF

TENANT B  
±25,500 SF

#### FLOOR 2



TENANT A  
±51,000 SF





# LOCATION ADVANTAGES

The Quad at Tasman sits in the coveted Golden Triangle between **Highway 101, SR 237, and I-880**, with quick access to nearby entertainment, amenities, and major transport hubs.



**130+**

Nearby dining and retail amenities

**ADJACENT**

To VTA Light Rail

**DIRECT**

Access to Hwy 101 and SR 237

**20-25 MIN**

Drive to San Jose Airport and SFO

SANTA CLARA

8 MINUTES

@FIRST

- |                            |                |
|----------------------------|----------------|
| Target                     | Panda Express  |
| Fresh & Easy               | Pasta Pomodoro |
| CVS Pharmacy               | Sweet Tomatoes |
| The Coffee Bean & Tea Leaf | Sprint         |
| Chipotle Mexican Grill     | Chase Bank     |
| Chick-fil-A                | Union Bank     |
| Five Guys                  | Supercuts      |
| Panera Bread               |                |

Aloft Santa Clara

Hyatt Regency Santa Clara

Santa Clara Convention Center



Hilton Santa Clara

Patrick Henry Station  
\*Adjacent to the Property

Santa Clara Marriott

Avatar Hotel Santa Clara, Tapestry Collection by Hilton

8 MINUTES

MERCADO CENTER

- AMC Mercado 20
- In-N-Out Burger
- Jamba Juice
- Krispy Kreme
- Mexicali Grill
- Panda Express
- SmokeEaters
- Starbucks
- Subway
- TJ Maxx
- Walmart Neighborhood Mrkt

7 MINUTES

SANTA CLARA SQUARE

- |                        |                       |                    |
|------------------------|-----------------------|--------------------|
| Barebottle Brewing     | Jaks                  | Whole Foods Market |
| Chipotle Mexican Grill | Lee's Sandwiches      | Chase Bank         |
| Eureka!                | Mountain Mike's Pizza | Club Pilates       |
| Fleming's Steakhouse   | Opal                  | CorePower Yoga     |
| Gong Cha               | Pacific Catch         | OrangeTwist        |
| The Halal Guys         | Puesto                | Sephora            |
| Il Fornaio             | Starbucks Coffee      |                    |

10 MINUTES

NICHOLSON PLAZA

- Subway
- Round Table Pizza
- La Catalana
- Sendo Sushi
- Mina's Korean BBQ
- Halal Gyro Express
- Vons Chicken
- Sri's Kitchen
- First Mart

13 MINUTES

RIVERMARK

- |                        |                         |
|------------------------|-------------------------|
| Safeway                | Starbucks               |
| Chipotle Mexican Grill | Fantasia Coffee & Tea   |
| Red Robin              | Gamestop                |
| Posh Bagel             | New Balance Footwear    |
| Coldstone Creamery     | Wells Fargo Bank        |
| Yo Yo Sushi            | Supercuts               |
| Premier Pizza          | The Bar Method          |
| Mezbaan Bar & Indian   | River Mark Nail Spa     |
| Piatti                 | Hyatt House Santa Clara |
| Peet's Coffee & Tea    |                         |

13 MINUTES

MCCARTHY RANCH MARKETPLACE

- |                  |                  |                      |
|------------------|------------------|----------------------|
| Best Buy         | Home Town Buffet | Starbucks            |
| PetSmart         | Green Cafe       | Subway               |
| Walmart          | Macaroni Grill   | Taco Bell            |
| Men's Warehouse  | On The Border    | Taqueria Los Cunados |
| Ross             | Pasta Pomodoro   | Togo's               |
| Sprint Store     | Red Kwali        | Tutti Frutti         |
| Verizon Wireless | Specialty's Cafe | Hilton Garden Inn    |
| Applebee's       | Sushi King       | Larkspur Landing     |
| Black Angus      | Happi House      |                      |
| Cinnamon Club    | In-N-Out Burger  |                      |
| Asian Grill      | McDonald's       |                      |

12 MINUTES

RIVER OAKS PLAZA

- Starbucks
- Mountain Mike's Pizza
- Subway
- Tortilla House
- Talab
- Bibimbowl
- Chase Bank

12 MINUTES

THE MARKETPLACE

- |                           |                       |
|---------------------------|-----------------------|
| Bank of America           | Philly's Cheesesteaks |
| Carl's Junior             | Okyahma Express       |
| Subway                    | Una Mas               |
| Starbucks                 | Thai Orchard          |
| Specialty's Cafe & Bakery | Dish n' Dash          |
| Premier Pizza             | Homewood Suites       |
| Pho Viet                  |                       |

15 MINUTES

THE GREAT MALL

- Sears
- Kohl's
- Burlington Coat Factory
- Banana Republic
- Gap
- H&M
- Marshall's
- Nike
- UNIQLO
- Victoria's Secret
- Toys in Motion
- Sports Authority
- Home Depot
- Dave & Busters
- Olive Garden
- Red Robin
- Outback Steakhouse
- Starbucks
- Subway

Milpitas Station  
\*20 mins from the Property

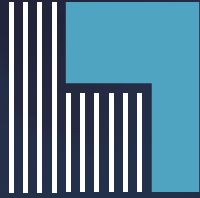
101

San Jose International Airport

To Downtown San Jose/  
Diridon Caltrain

San Jose Municipal Golf Course





# THE QUAD

## AT TASMAN

### BRANDON BAIN

+1 408 615 3416  
brandon.bain@cushwake.com  
Lic #01308375

### ERIK HALLGRIMSON

+1 408 615 3435  
erik.hallgrimson@cushwake.com  
Lic #01274540

### KATE MYERS

+1 408 502 0196  
kate.myers@cushwake.com  
Lic #02253804

TENANT NAME

