

FOR SUBLEASE

OAKLAND ROAD BUSINESS PARK

1580 Oakland Road, San Jose, CA
Suite C-103

±1,811 SF OFFICE/WAREHOUSE



KEVIN SWEATT
Senior Director
kevin.sweatt@cushwake.com
+1 408 639 6247
LIC #01221048



©2025 Cushman & Wakefield. All rights reserved. The information contained in this communication is strictly confidential. This information has been obtained from sources believed to be reliable but has not been verified. NO WARRANTY OR REPRESENTATION, EXPRESS OR IMPLIED, IS MADE AS TO THE CONDITION OF THE PROPERTY (OR PROPERTIES) REFERENCED HEREIN OR AS TO THE ACCURACY OR COMPLETENESS OF THE INFORMATION CONTAINED HEREIN, AND SAME IS SUBMITTED SUBJECT TO ERRORS, OMISSIONS, CHANGE OF PRICE, RENTAL OR OTHER CONDITIONS, WITHDRAWAL WITHOUT NOTICE, AND TO ANY SPECIAL LISTING CONDITIONS IMPOSED BY THE PROPERTY OWNER(S). ANY PROJECTIONS, OPINIONS OR ESTIMATES ARE SUBJECT TO UNCERTAINTY AND DO NOT SIGNIFY CURRENT OR FUTURE PROPERTY PERFORMANCE.



OAKLAND ROAD BUSINESS PARK



HIGHLIGHTS

- 1580 Oakland Road, Suite C-103
- ±1,811 SF Space
- Office/Warehouse
- Power: 70 Amps - Tenant to Verify
- Located at Oakland Road Business Park
- Easy Access to Hwy I-680, I-880 & US-101
- LED: 12/31/2025
- \$1.50/SF NNN + estimated 2025 NNN's of \$0.65/SF
- Available Now!
- Call Broker to Tour
- Do Not Disturb Tenant

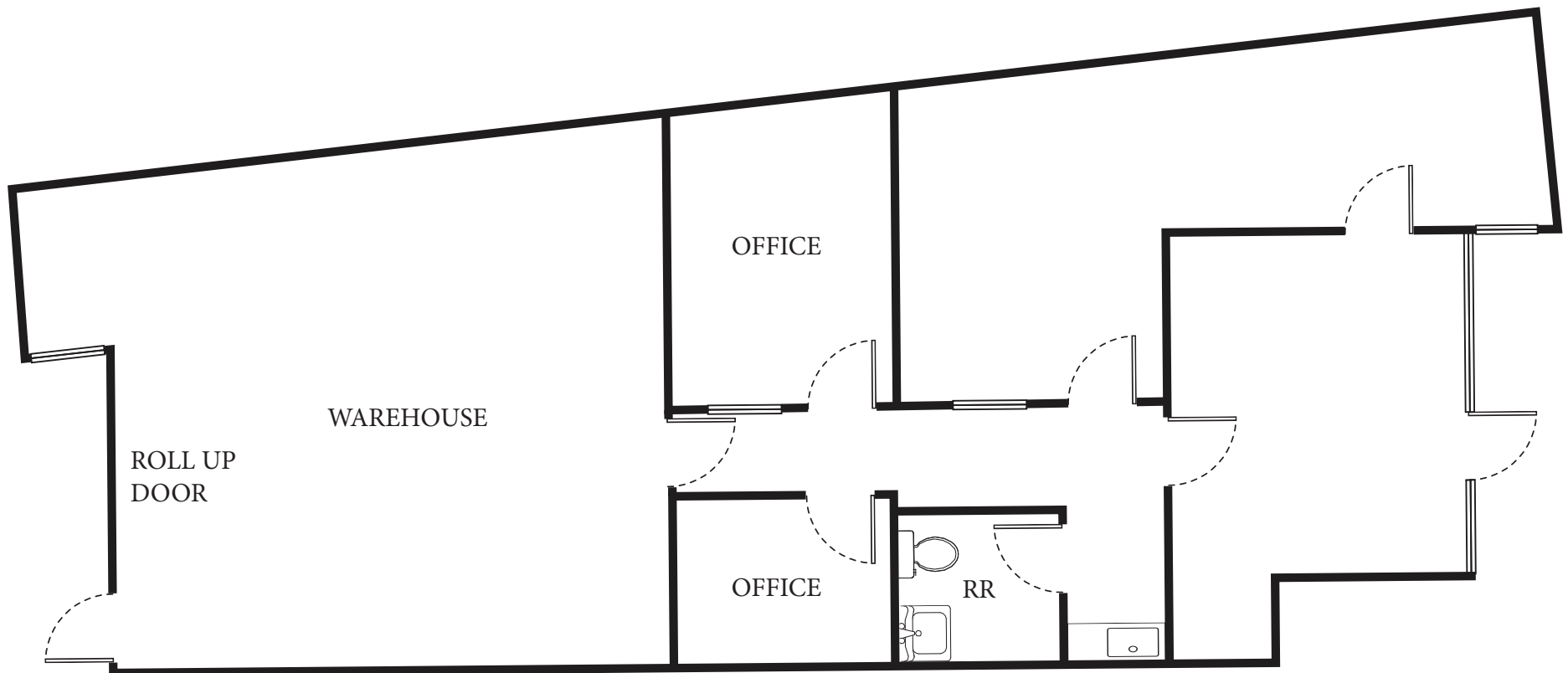


FLOOR PLAN

1580 OAKLAND ROAD

C-103 / ±1,811 SF

AVAILABLE NOW!



NOT EXACT OR TO SCALE

SITE PLAN

1580 OAKLAND ROAD

C-103 / ±1,811 SF
AVAILABLE NOW!

DEMOGRAPHICS

	1 MILE	3 MILES	5 MILES
Population	18,726	205,992	578,735
Average HHI	\$209,994	\$191,056	\$189,292
Daytime Pop.	33,099	295,876	718,555



INTERIOR

