

390 CARROL COURT BRENTWOOD, CA

±2,550 - ±8,900 SF

WAREHOUSE/OFFICE FOR LEASE WITH FENCED YARD

SUNSET ROAD

ELKINS WAY

KRIS HAGAR, SIOR

Senior Director | 925.627.2497 | kris.hagar@cushwake.com | LIC #02009499



PROPERTY HIGHLIGHTS

SUITES E, F, & G

390
CARROL COURT
BRENTWOOD, CA

- » Multiple SF Options Available
 - ±2,550 / 3,800 / 6,350 / 8,900
- » Total Office ±4,350 SF
- » Total Warehouse ±4,550 SF
- » Concrete Tilt-Up Industrial Building
- » Built in 2005
- » 22-24' Warehouse Clearance
- » Shared Fenced Yard Area
 - Secured Property
- » Three (3) Grade Level Doors
- » Fire Sprinklers
- » Asking Rate - \$1.40 NNN + **\$0.35/SF**



AVAILABLE NOW

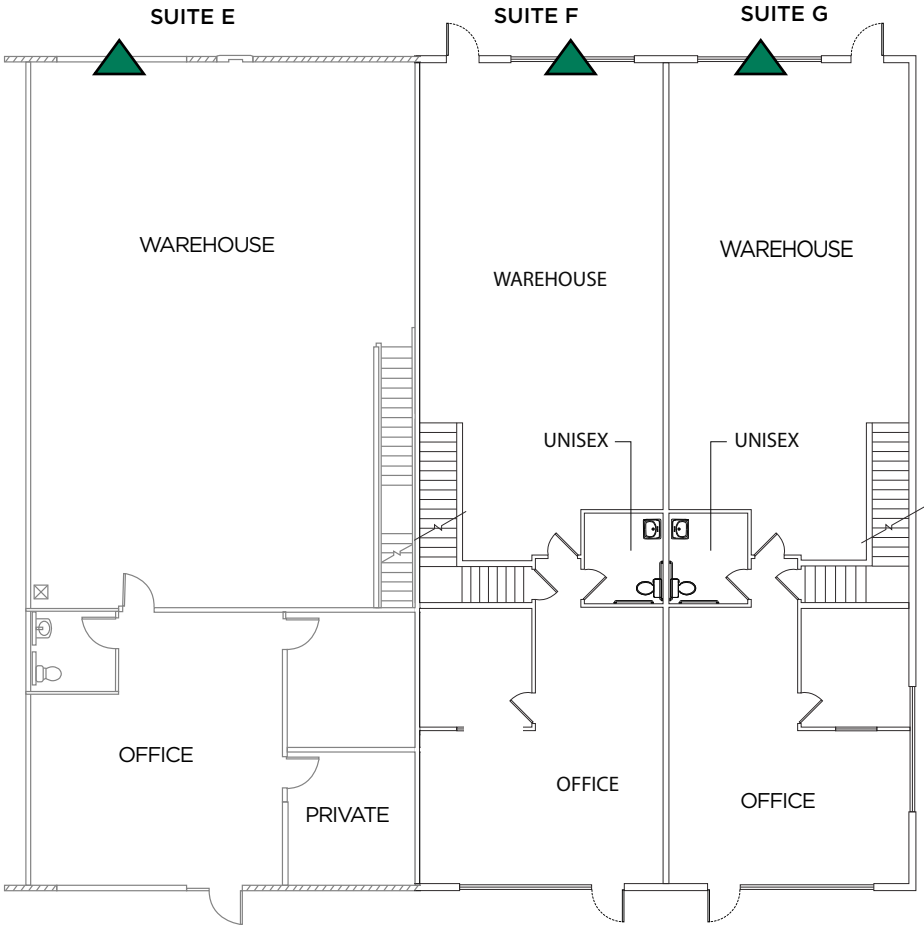
FLOOR PLANS – FIRST FLOOR

SUITES E, F, & G

*Not To Scale

SUITE	OFFICE	WAREHOUSE
E	±1,800 SF	±2,000 SF
F	±1,275 SF	±1,275 SF
G	±1,275 SF	±1,275 SF

 Grade Level Door

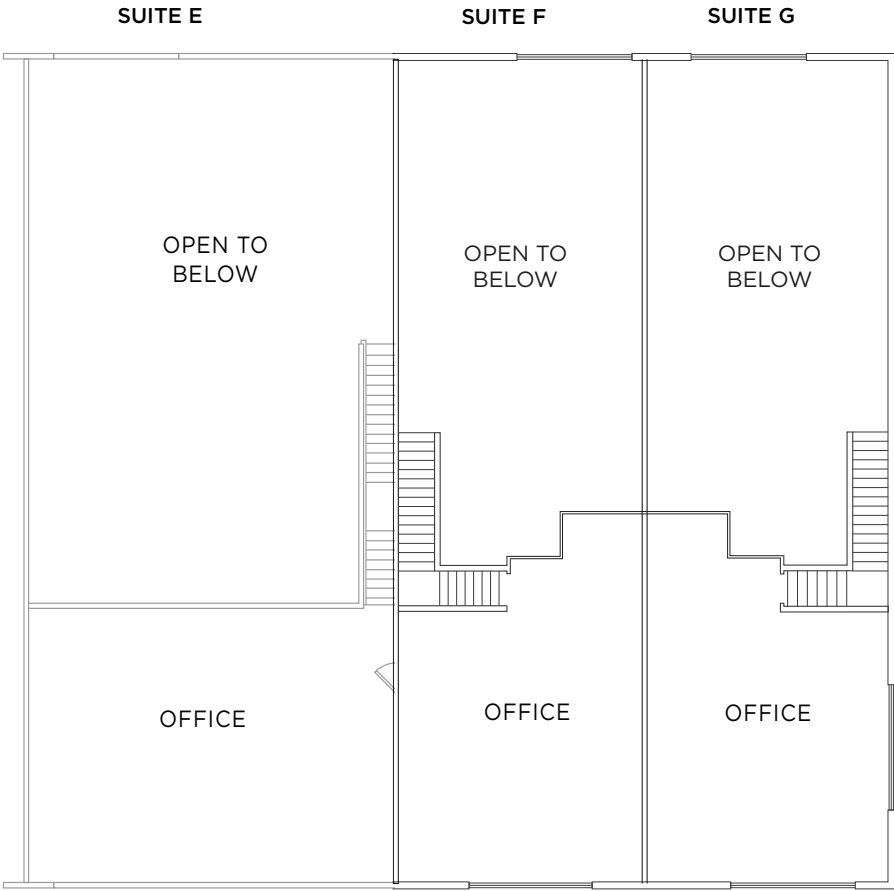


FLOOR PLANS – SECOND FLOOR

SUITES E, F, & G

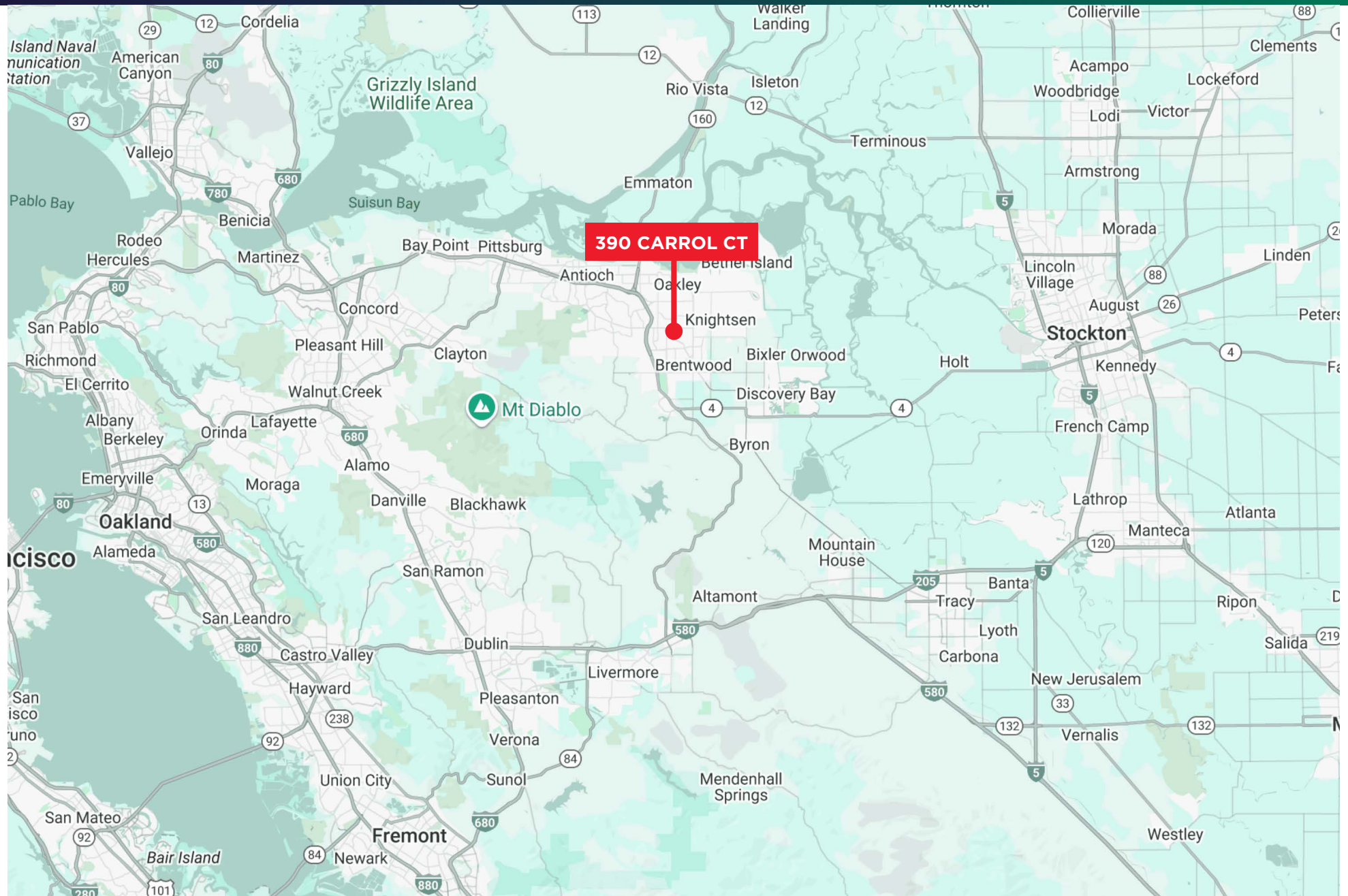
*Not To Scale

SUITE	OFFICE	WAREHOUSE
E	±1,800 SF	±2,000 SF
F	±1,275 SF	±1,275 SF
G	±1,275 SF	±1,275 SF



AREA MAP

390
CARROL COURT
BRENTWOOD, CA



390 CARROL COURT BRENTWOOD, CA



KRIS HAGAR, SIOR

Senior Director | 925.627.2497 | kris.hagar@cushwake.com | LIC #02009499



©2025 Cushman & Wakefield. All rights reserved. The information contained in this communication is strictly confidential. This information has been obtained from sources believed to be reliable but has not been verified. No warranty or representation, express or implied, is made as to the condition of the property (or properties) referenced herein or as to the accuracy or completeness of the information contained herein, and same is submitted subject to errors, omissions, change of price, rental or other conditions, withdrawal without notice, and to any special listing conditions imposed by the property owner(s). Any projections, opinions or estimates are subject to uncertainty and do not signify current or future property performance.