

CLIFF FRONT LAND AT PANDAWA BEACH BALI



SURROUNDINGS

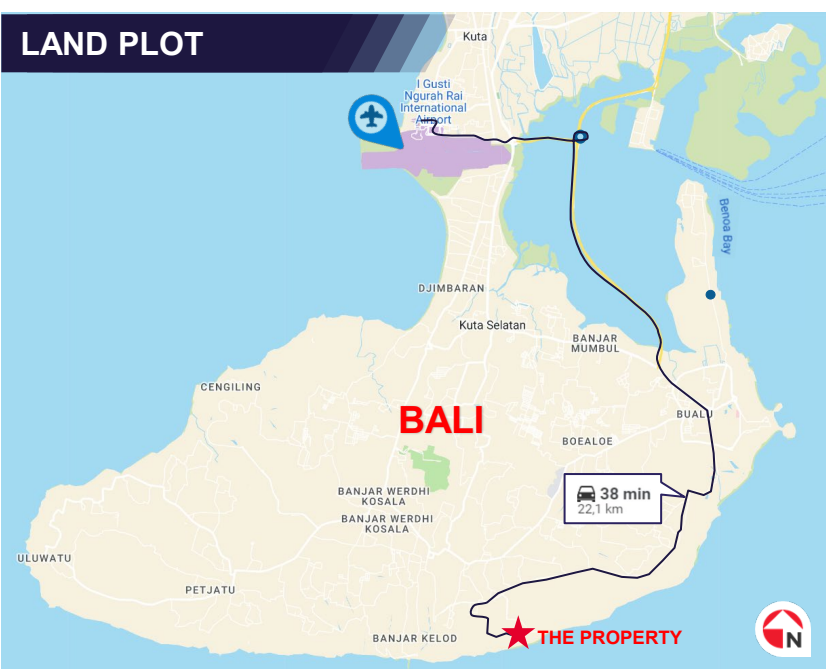
1. Karang Saujana Estate
2. Sohamsa Ocean Estate
3. Pandawa Cliff Estate
4. Poco Poco Villa
5. Villa Latitude Bali
6. Roosterfish Beach Club
7. Gapura Vista Residences



PROPERTY DESCRIPTION

Discover the epitome of coastal living at this stunning cliffside location, nestled on the edge of Bali Island. The property offers limitless, unobstructed ocean views and is accessible from Jalan Nusa Dua Selatan on Bali Island, situated adjacent to Poco Poco Villa and Latitude Villa. It is just 2.4 kilometers from the renowned Umana LXR Hotel & Resort and 2 kilometers from Bukit Pandawa Golf & Country Club. Ngurah Rai International Airport is a short 38-minute drive, approximately 22 kilometers away. Embrace this rare opportunity to create an unparalleled villa development.

LAND PLOT



PROPERTY DETAILS

LAND AREA	± 12,530 sm
LAND TITLE	SHM
DEVELOPMENT PARAMETER	Zoning: Tourism Plot Ratio: 2 Site Coverage: 50% Building Heights: 15 m
ASKING PRICE	IDR 15 Million psm
LOCATION	Google Map

For more information
please contact:



Mina Ondang
Director, Investment

+(62) 811 820 9500
Mina.Ondang@ap.cushwake.com

CLIFF FRONT LAND
AT PANDAWA BEACH
BALI



Bird Eye View of The Property



Access to The Property from Jalan Karang Putih 1