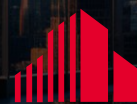
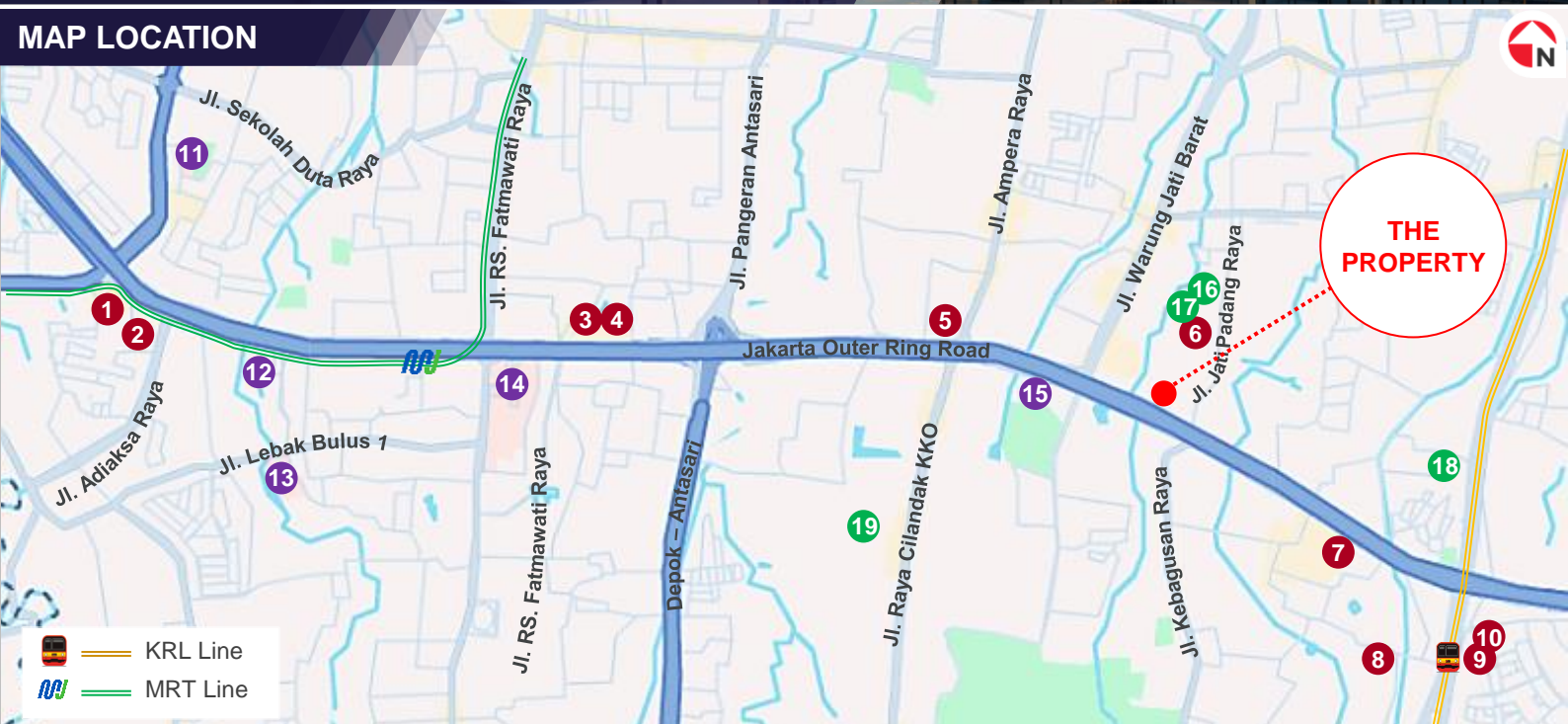


FOR LEASE / FOR SALE COMMERCIAL LAND JL. TB. SIMATUPANG, SOUTH JAKARTA



**CUSHMAN &
WAKEFIELD**

MAP LOCATION



COMMERCIAL / APARTMENT

1. Poins Mall
2. Mercure Hotel Simatupang
3. Cilandak Town Square
4. Ibis Styles Hotel
5. Aloft South Hotel
6. Apple 1 Condovilla
7. Aston Priority Hotel
8. Kebagusan City Apartment
9. AEON Mall Tanjung Barat
10. Southgate Residence

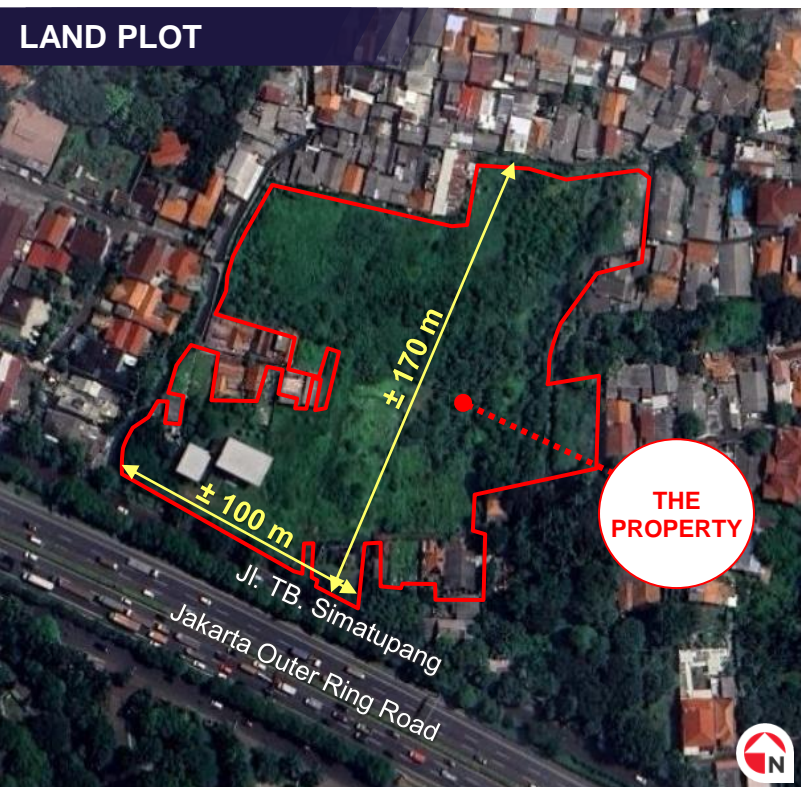
PUBLIC FACILITIES

11. Pondok Indah Puri Indah Hospital
12. Siloam Hospital Simatupang
13. Mayapada Hospital
14. Siloam Heart Diagram Hospital
15. RSUD Pasar Minggu

LANDED RESIDENTIAL

16. Jati Padang Residence
17. Tanah Teduh, Jati Padang
18. Batan Housing Complex
19. Marinir Cilandak Complex

LAND PLOT



PROPERTY DESCRIPTION

- The Property is strategically located at Jalan TB. Simatupang and surrounded by commercial, office, and residential development.
- Easily accessible from Toll JORR road, only 1.5 km from Mampang Prapatan exit gate.
- Located close to vibrant shopping malls, which approximately 3.5 km from AEON Mall Tanjung Barat and 7.5 km from Cilandak Town Square.

PROPERTY DETAILS

LAND AREA	19,569 sm
LAND TITLE	SHGB & Hak Pakai
ZONING	Commercial, residential, and greenery
ASKING PRICE	IDR 39 million psm plus VAT
RENTAL RATE	IDR 50,000 psm per month plus VAT
LOCATION	Google Map

For more information
please contact:



Mina Ondang
Director, Investment

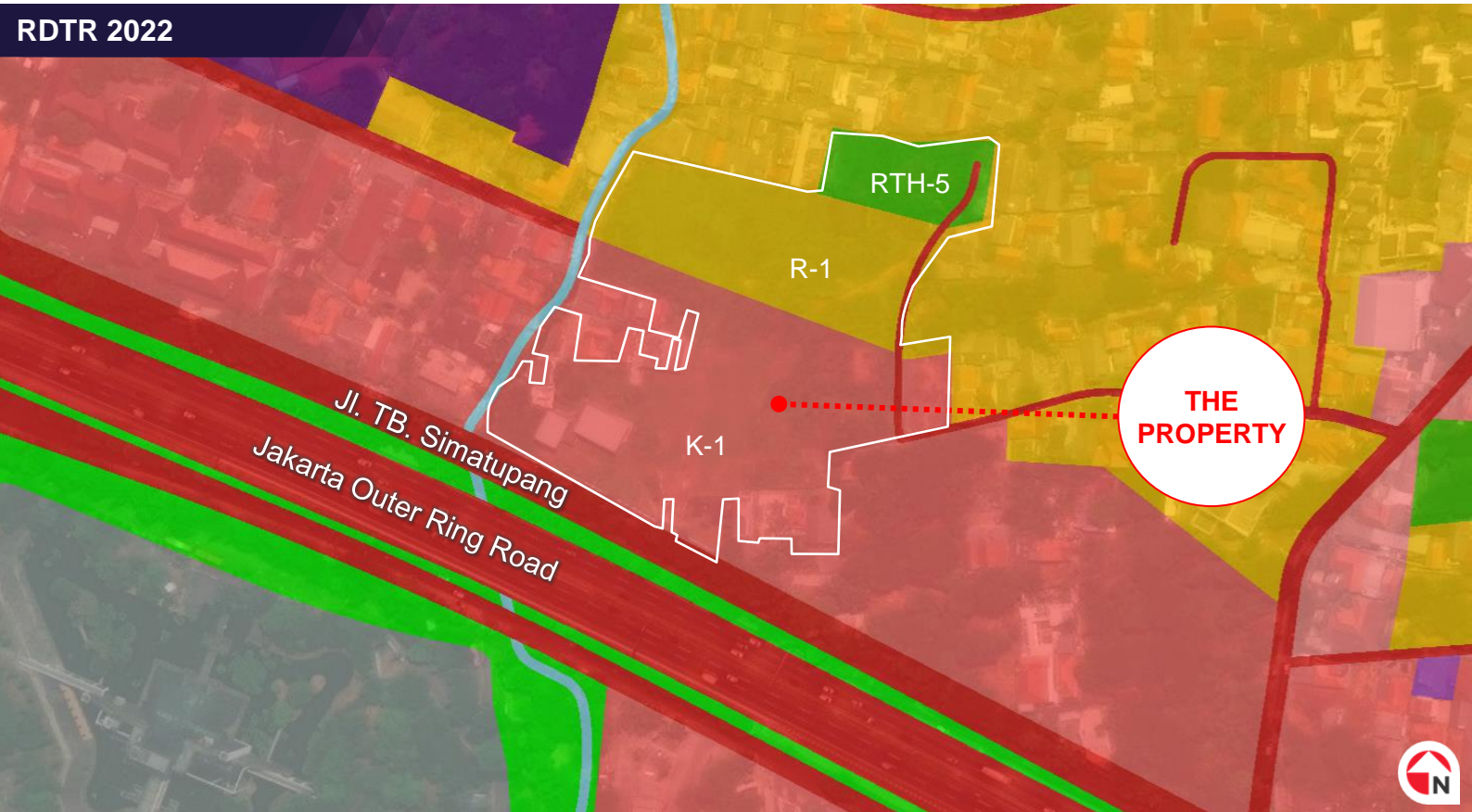
+(62) 811 820 9500
Mina.Ondang@ap.cushwake.com

FOR LEASE / FOR SALE
COMMERCIAL LAND
JL. TB. SIMATUPANG, SOUTH JAKARTA



CUSHMAN &
WAKEFIELD

RDTR 2022



ZONING	K-1	R-1	RTH-5
PLOT RATIO	6.39	1.6	0.2
SITE COVERAGE	55%	40%	10%
BUILDING HEIGHT (KKOP)		155 m	



View of the Property from Jl. TB Simatupang

Cushman & Wakefield copyright 2024. No warranty or representation, express or implied, is made to the accuracy or completeness of the information contained herein, and same is submitted subject to errors, omissions, change of price, rental or other conditions, withdrawal without notice, and to any special listing conditions imposed by the property owner(s). As applicable, we make no representation as to the condition of the property (or properties) in question.