

FOR SALE



**CUSHMAN &
WAKEFIELD**
Edmonton

GATES ON TWELFTH

10147

GATES ON TWELFTH

10155-112 STREET,
EDMONTON, AB

RETAIL & OFFICE CONDO FOR SALE

**CUSHMAN & WAKEFIELD
Edmonton**
Suite 2700, TD Tower
10088 - 102 Avenue
Edmonton, AB T5J 2Z1
www.cwedm.com

Cushman & Wakefield Edmonton is independently owned and operated / A Member of the Cushman & Wakefield Alliance. No warranty or representation, express or implied, is made to the accuracy or completeness of the information contained herein, and same is submitted subject to errors, omissions, change of price, rental or other conditions, withdrawal without notice, and to any special listing conditions imposed by the property owner(s). As applicable, we make no representation as to the condition of the property (or properties) in question. SEPTEMBER 2025

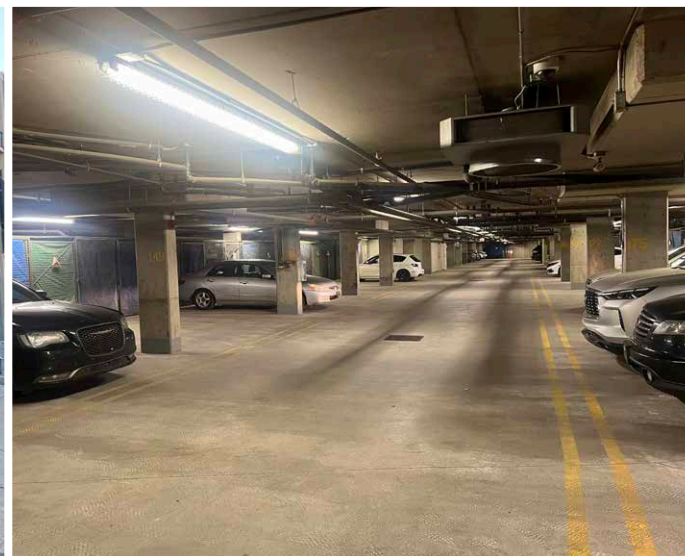
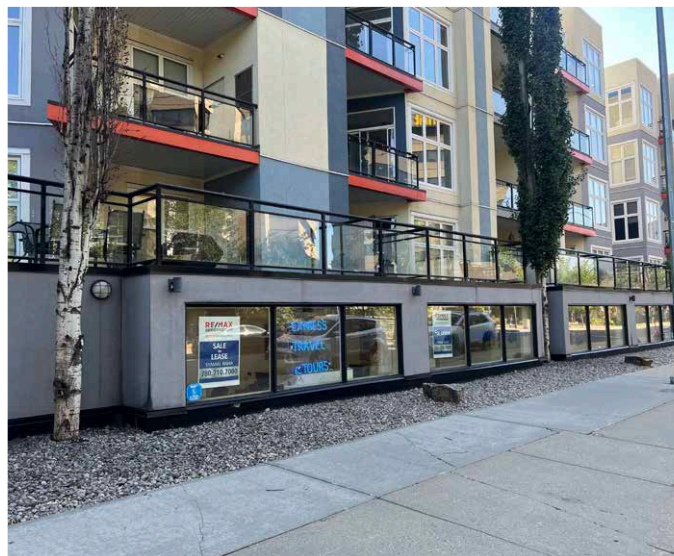
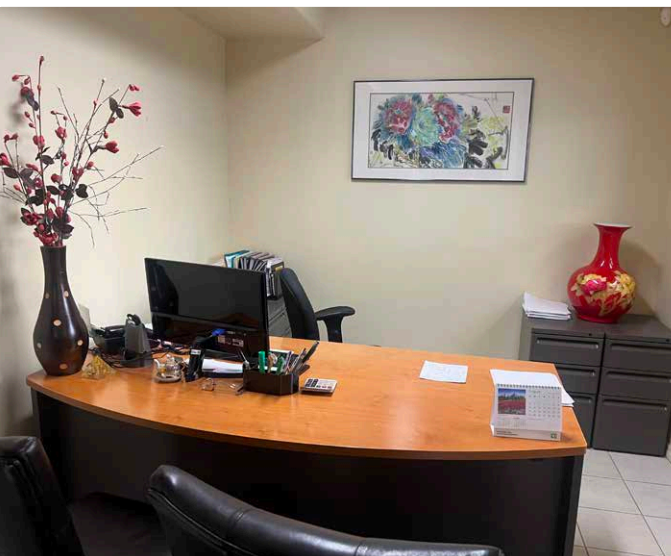
Karina Lopez
Senior Associate
780 429 9393

karina.lopez@cwedm.com

PROPERTY DETAILS

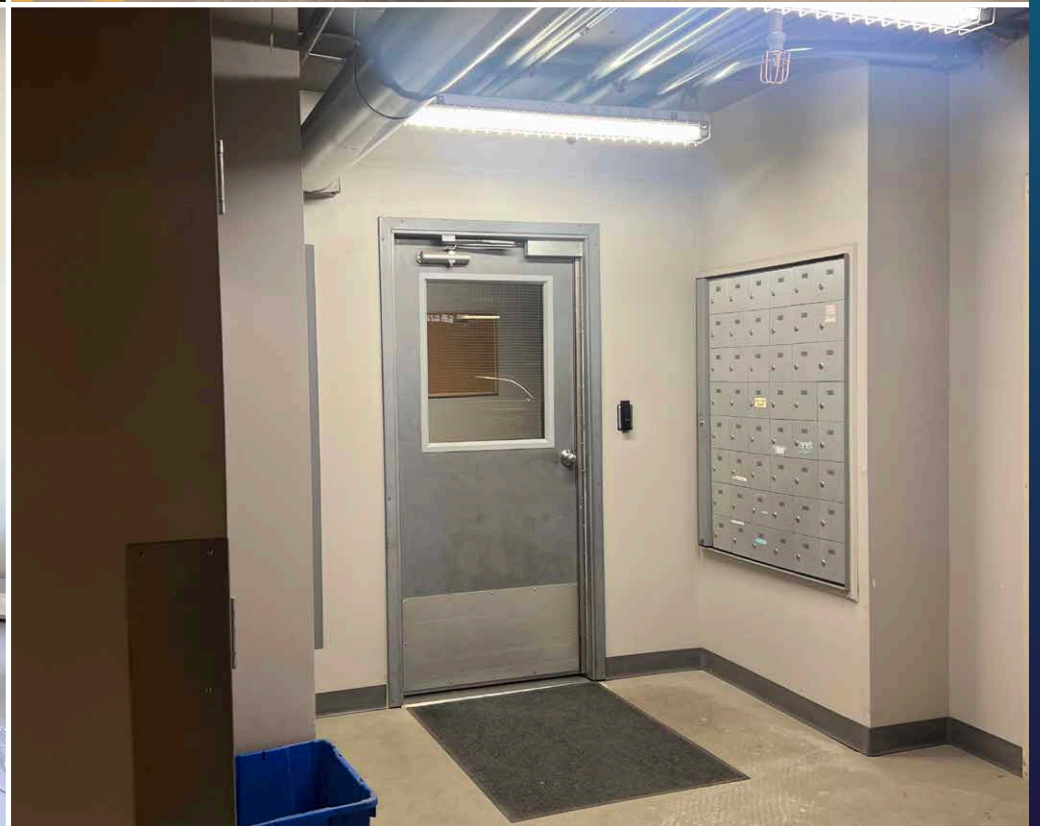
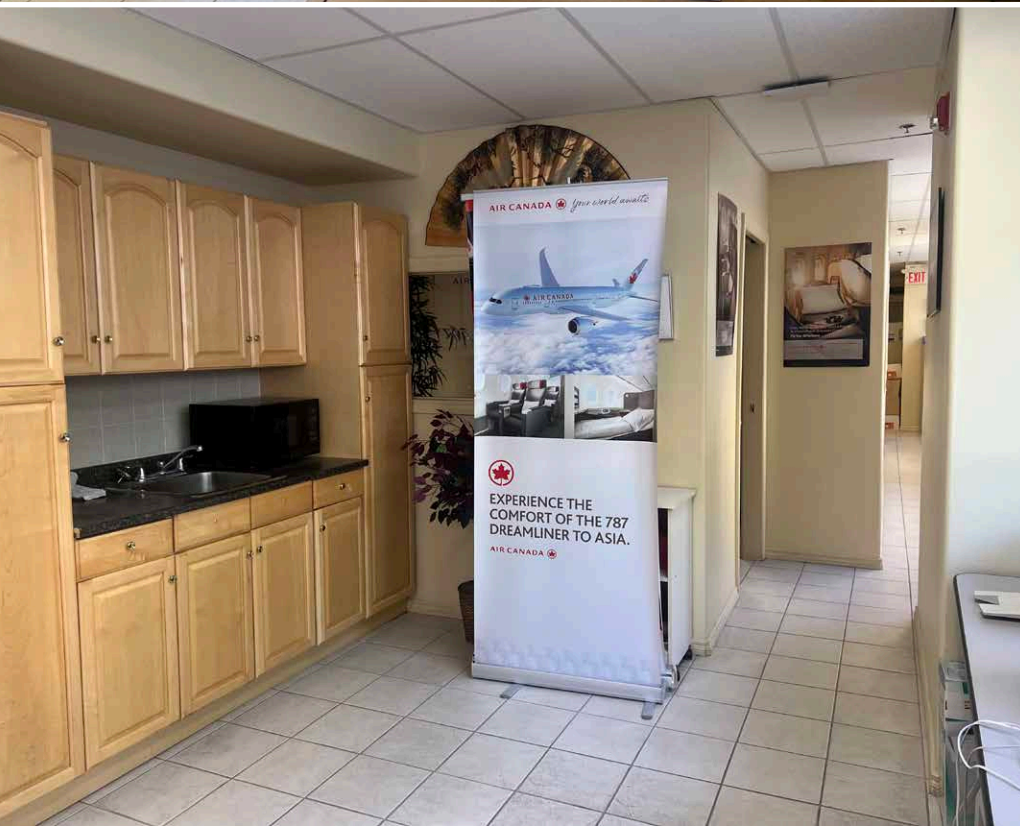
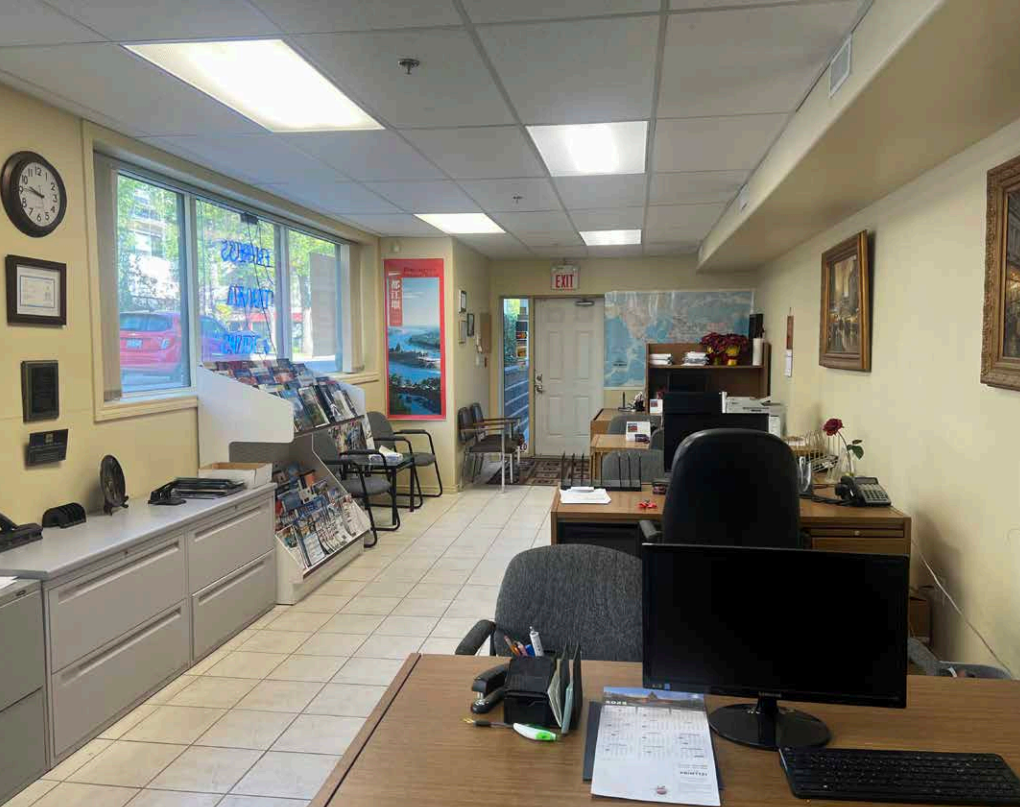
Municipal Address	10155-112 Street, Edmonton, AB
Legal Description	Condominium Plan 042 4882 Unit 92
Available SF	1,108 SF
Property Type	Commercial Condominium
City Assessment	\$324,000 (2025)

Zoning	Mixed Use (MU)
Building Age	Built in 2004
Floor #	1st floor
Parking	2 underground, reserved parking stalls
Sale Price	\$305,000



PROPERTY HIGHLIGHTS

Ideal space for Massage Therapist, Acupuncturist, Chiropractor, Psychology Office, Insurance, Coffee Shop or other retail businesses.



AREA DEMO'S



HOUSEHOLDS

1KM	3KM	5KM
15,205	55,532	106,922



POPULATION

1KM	3KM	5KM
25,398	100,940	217,806



AVERAGE INCOME

1KM	3KM	5KM
\$95,394	\$98,438	\$109,588



VEHICLES PER DAY

Jasper Ave: 26,338 VPD
112 Street: 4,194 VPD



104 AVE (29,348 VPD)

109 STREET (34,508 VPD)

JASPER AVE (26,338 VPD)

**CUSHMAN & WAKEFIELD
Edmonton**
Suite 2700, TD Tower
10088 - 102 Avenue
Edmonton, AB T5J 2Z1
www.cwedm.com

Cushman & Wakefield Edmonton is independently owned and operated / A Member of the Cushman & Wakefield Alliance. No warranty or representation, express or implied, is made to the accuracy or completeness of the information contained herein, and same is submitted subject to errors, omissions, change of price, rental or other conditions, withdrawal without notice, and to any special listing conditions imposed by the property owner(s). As applicable, we make no representation as to the condition of the property (or properties) in question. SEPTEMBER 2025

Karina Lopez
Senior Associate
780 429 9393
karina.lopez@cwedm.com