

FOR SALE OR LEASE
45,840 SF

900 MCKINLEY ST ANOKA, MN



PROPERTY INFORMATION

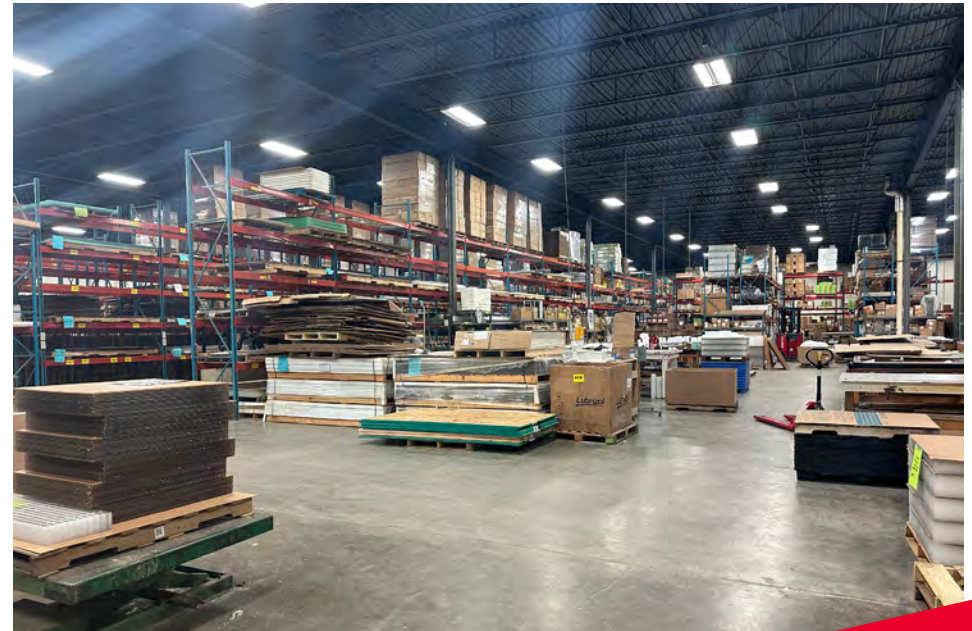
PROPERTY HIGHLIGHTS

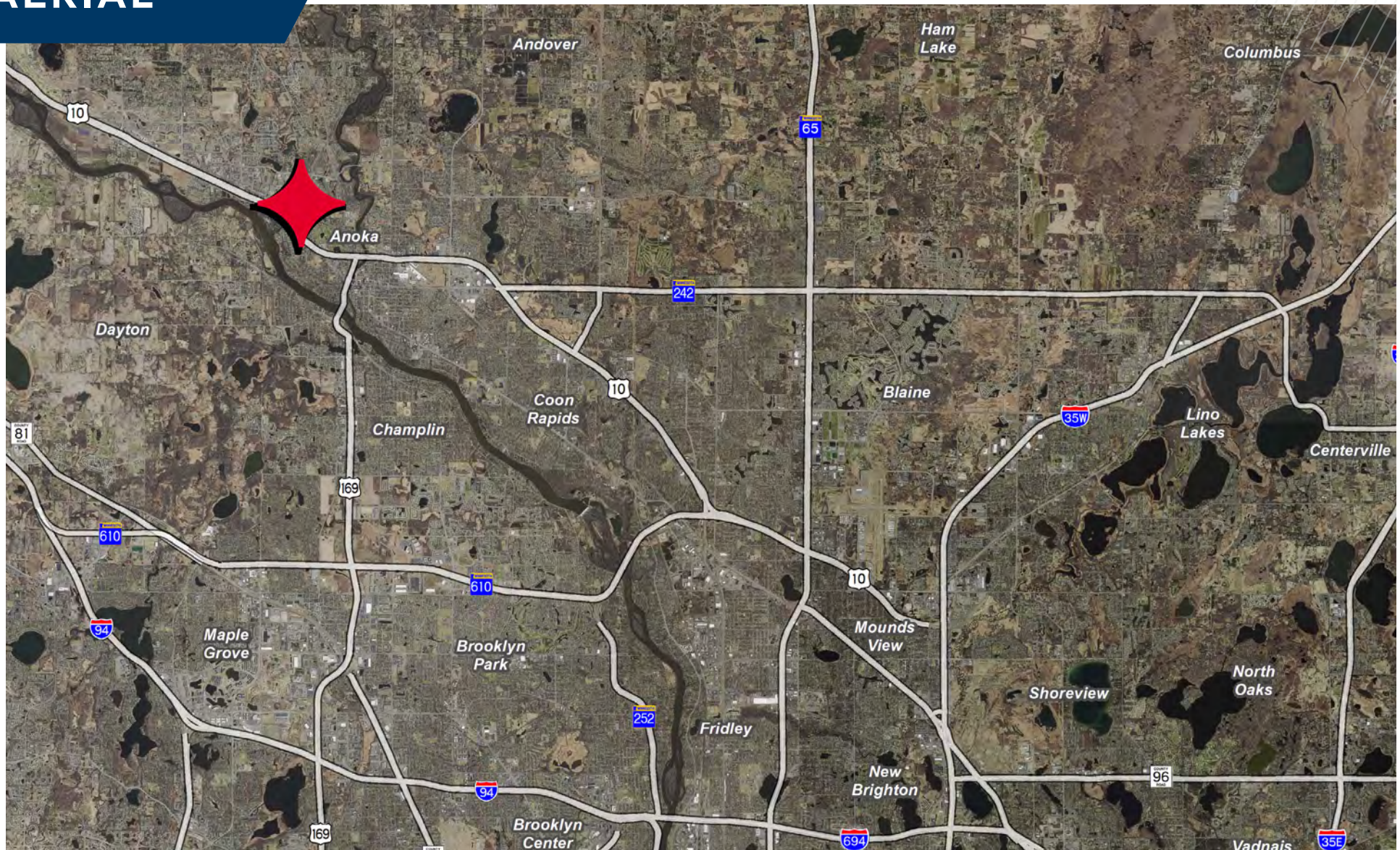
- Dock and drive-in loading
- Excess land for addition or exterior storage
- Heavy power
- Direct access to Hwy 10

Address	900 McKinley St Anoka, MN
Building Size	4,176 SF Office 41,664 SF Whse 45,840 SF Total
Parcel ID	35-32-25-41-0018
Total Land	4.36 acres (189,921 SF)
Year Built	1998
Clear Height	20'
Loading	4 docks 1 drive-in
Parking	+/- 60 stalls
Power	3,000 amps
Sale Price	\$5,100,000
Lease Rate	Negotiable



PROPERTY PHOTOS





DANNY MCNAMARA

Managing Director
+1 952 893 8895
danny.mcnamara@cushwake.com

BRENT MASICA

Executive Managing Director
+1 952 893 8231
brent.masica@cushwake.com

3500 American Blvd W, Suite 200
Minneapolis, MN 55431
952 831 1000
industrialmn.com