

# 580 CORPORATE CENTER

4023-4035 Tampa Road, Oldsmar, FL 34677



## PROPERTY HIGHLIGHTS

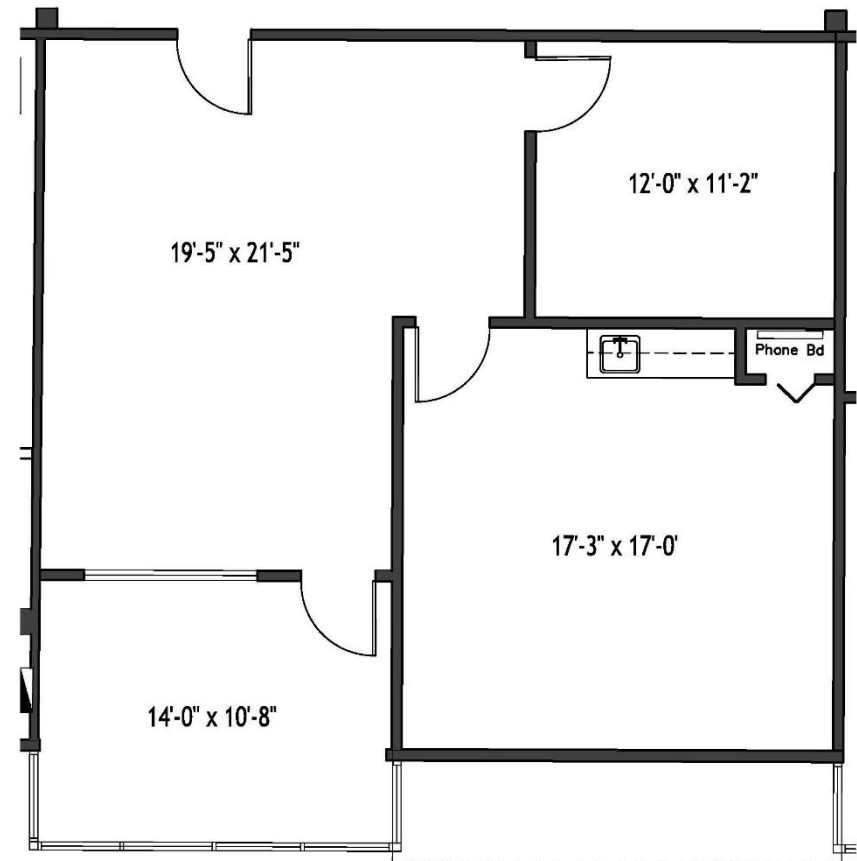
- Spaces available from 2,392 – 21,000 SF
- 6-Building Portfolio
- Excellent accessibility to North Pinellas County and Northwest Hillsborough County
- Dock-High Warehouse, Garden Office and Flex Space
- Frontage Directly on Tampa Road
- Convenient Access to Retail and Restaurants
- Close-proximity to Tampa International Airport

BLDG	FLOOR	SUITE	SF	TYPE	AVAILABILITY
4025	2 <sup>nd</sup>	1205	1,000	Office	June 2025
4025	2 <sup>nd</sup>	1208	2,392	Office	Available Now
4023	1 <sup>st</sup>	2800	9,564	Flex	Available Now
4033	1 <sup>st</sup>	101	10,315	Office	Available Now
4035	1 <sup>st</sup>	Entire Building	21,000	Office	February 2026

# SUITE 1205

## OFFICE SPACE

<b>FLOOR</b>	Second Floor
<b>AVAILABLE SF</b>	1,000 SF
<b>AVAILABILITY</b>	June 2025



FOR ADDITIONAL INFORMATION, PLEASE CONTACT:

**MELANIE JACKSON, CCIM, SIOR**  
Senior Director, Office  
+1 727 776 2780  
[melanie.jackson@cushwake.com](mailto:melanie.jackson@cushwake.com)

**TREY CARSWELL, SIOR**  
Managing Director, Industrial  
+1 813 204 5314  
[trey.carswell@cushwake.com](mailto:trey.carswell@cushwake.com)

**LISA ROSS, SIOR**  
Managing Director, Industrial  
+1 813 424 3211  
[lisa.ross@cushwake.com](mailto:lisa.ross@cushwake.com)

**SAM KOROLOS**  
Senior Associate  
+1 704 989 1327  
[sam.korolos@cushwake.com](mailto:sam.korolos@cushwake.com)

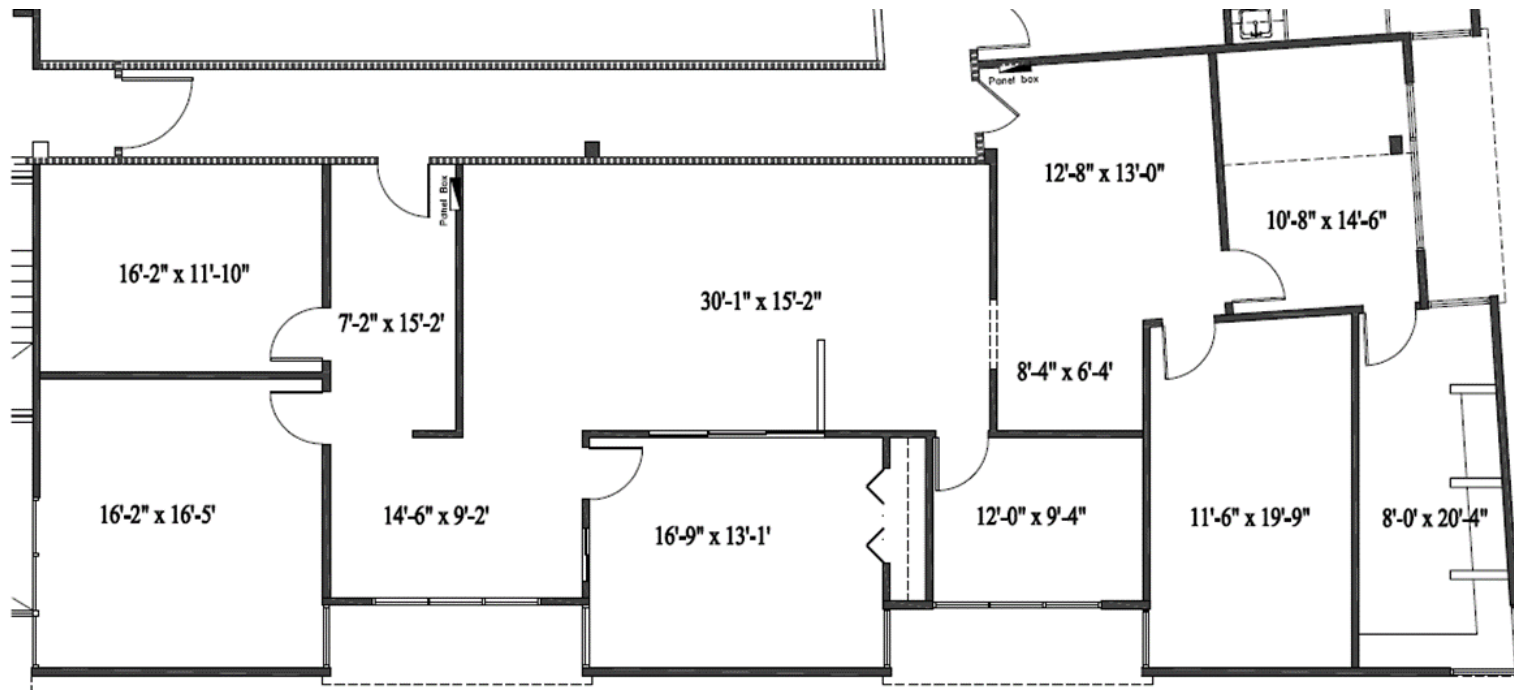


# SUITE 1208

## OFFICE SPACE

FLOOR	Second Floor
AVAILABLE SF	2,392 SF
AVAILABILITY	Available Now

## NEWLY RENOVATED SPACE



FOR ADDITIONAL INFORMATION, PLEASE CONTACT:

**MELANIE JACKSON, CCIM, SIOR**  
Senior Director, Office  
+1 727 776 2780  
[melanie.jackson@cushwake.com](mailto:melanie.jackson@cushwake.com)

**TREY CARSWELL, SIOR**  
Managing Director, Industrial  
+1 813 204 5314  
[trey.carswell@cushwake.com](mailto:trey.carswell@cushwake.com)

**LISA ROSS, SIOR**  
Managing Director, Industrial  
+1 813 424 3211  
[lisa.ross@cushwake.com](mailto:lisa.ross@cushwake.com)

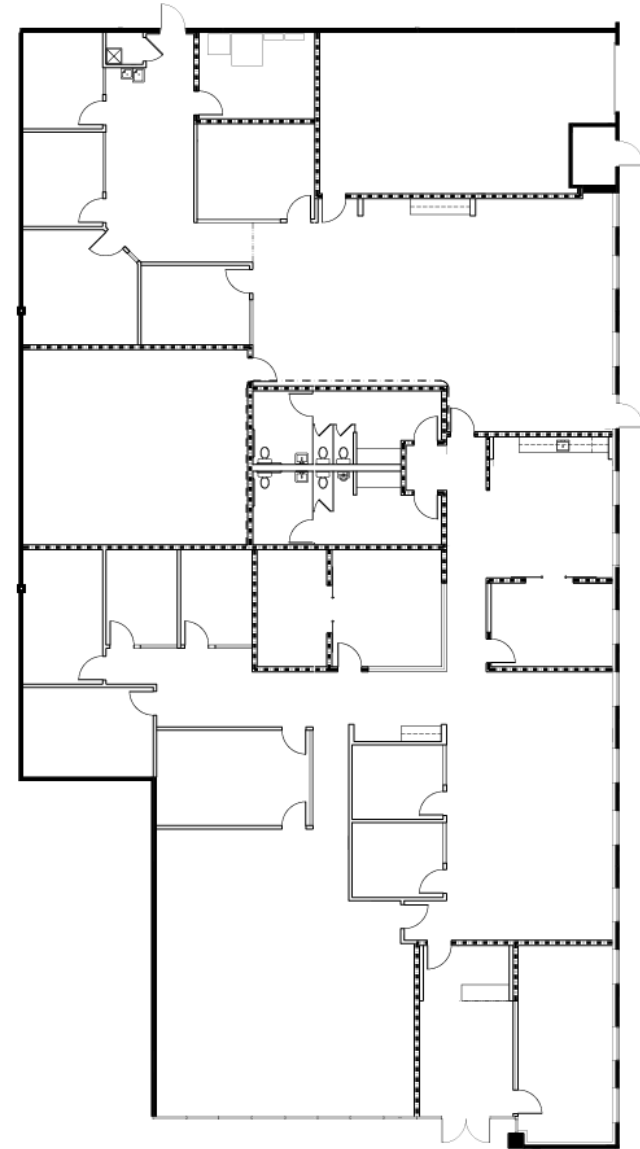
**SAM KOROLOS**  
Senior Associate  
+1 704 989 1327  
[sam.korolos@cushwake.com](mailto:sam.korolos@cushwake.com)



# SUITE 2800

## FLEX SPACE

<b>FLOOR</b>	First Floor
<b>AVAILABLE SF</b>	9,564 SF
<b>WAREHOUSE</b>	750 SF
<b>OFFICE</b>	8,814 SF
<b>LOADING</b>	One (1) Grade Level Door
<b>AVAILABILITY</b>	Available Now



FOR ADDITIONAL INFORMATION, PLEASE CONTACT:

**MELANIE JACKSON, CCIM, SIOR**  
Senior Director, Office  
+1 727 776 2780  
[melanie.jackson@cushwake.com](mailto:melanie.jackson@cushwake.com)

**TREY CARSWELL, SIOR**  
Managing Director, Industrial  
+1 813 204 5314  
[trey.carswell@cushwake.com](mailto:trey.carswell@cushwake.com)

**LISA ROSS, SIOR**  
Managing Director, Industrial  
+1 813 424 3211  
[lisa.ross@cushwake.com](mailto:lisa.ross@cushwake.com)

**SAM KOROLOS**  
Senior Associate  
+1 704 989 1327  
[sam.korolos@cushwake.com](mailto:sam.korolos@cushwake.com)

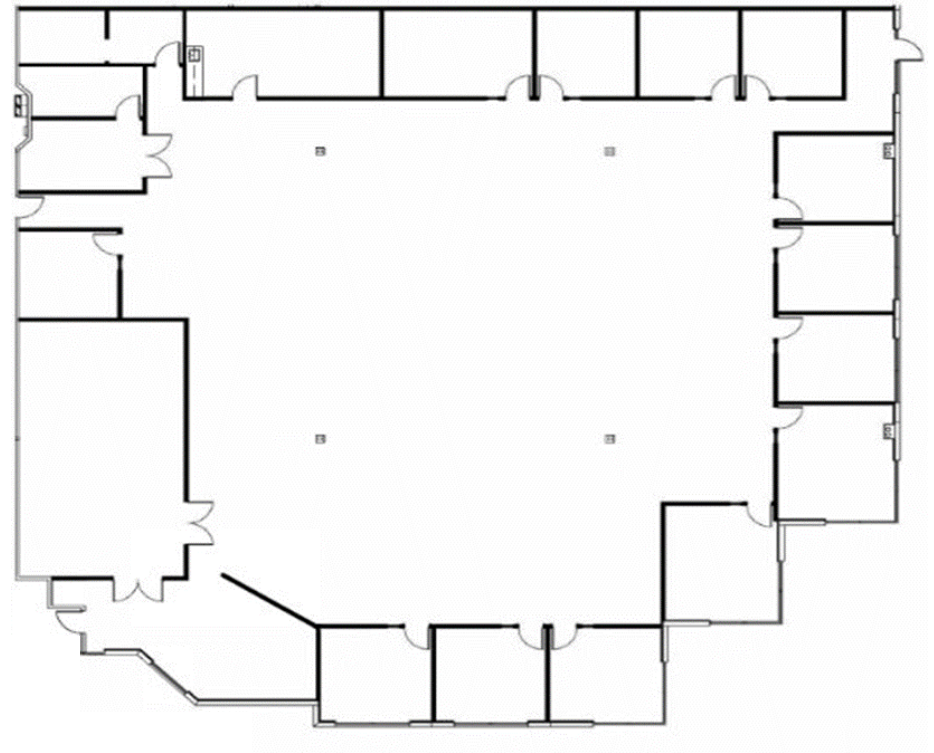




# SUITE 101

## OFFICE SPACE

<b>FLOOR</b>	First Floor
<b>AVAILABLE SF</b>	10,315 SF
<b>AVAILABILITY</b>	Available Now



**FOR ADDITIONAL INFORMATION, PLEASE CONTACT:**

**MELANIE JACKSON, CCIM, SIOR**  
Senior Director, Office  
+1 727 776 2780  
[melanie.jackson@cushwake.com](mailto:melanie.jackson@cushwake.com)

**TREY CARSWELL, SIOR**  
Managing Director, Industrial  
+1 813 204 5314  
[trey.carswell@cushwake.com](mailto:trey.carswell@cushwake.com)

**LISA ROSS, SIOR**  
Managing Director, Industrial  
+1 813 424 3211  
[lisa.ross@cushwake.com](mailto:lisa.ross@cushwake.com)

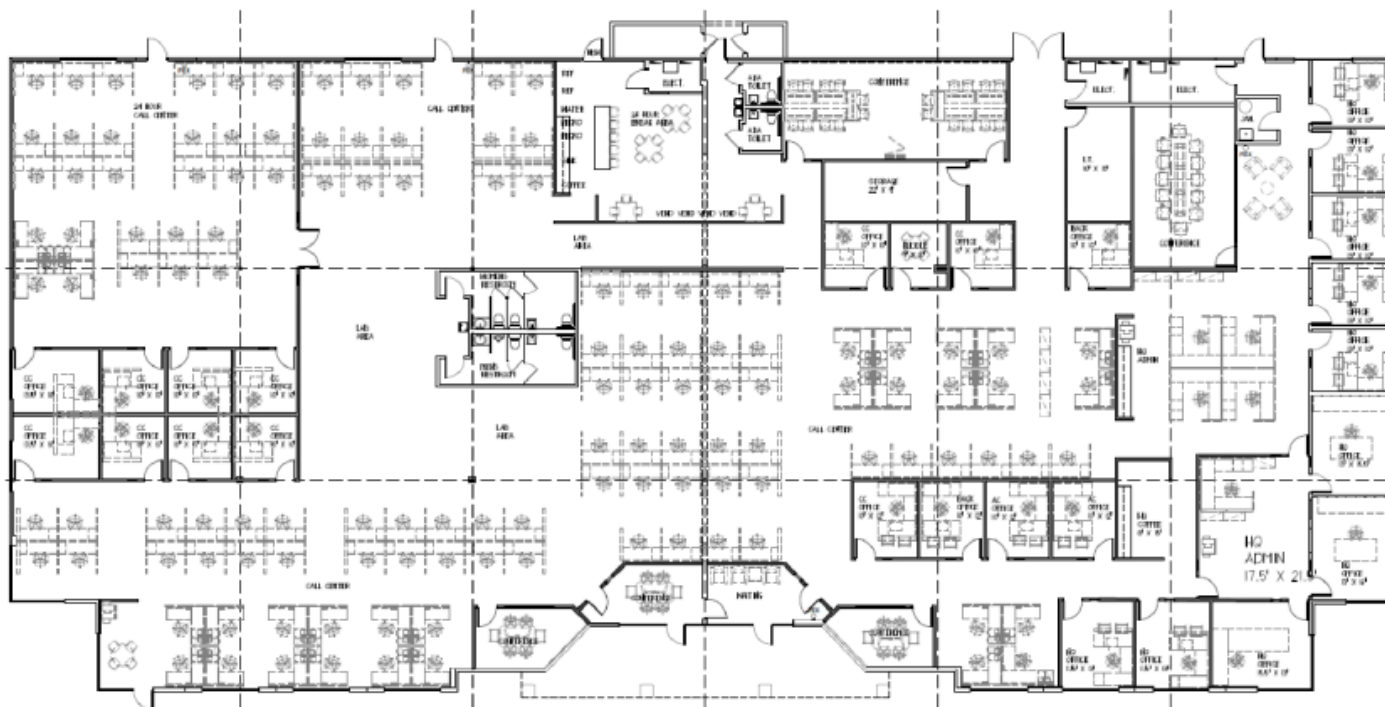
**SAM KOROLOS**  
Senior Associate  
+1 704 989 1327  
[sam.korolos@cushwake.com](mailto:sam.korolos@cushwake.com)



# ENTIRE BUILDING

## OFFICE SPACE

FLOOR	First Floor
AVAILABLE SF	21,000 SF
AVAILABILITY	February 2026



## FOR ADDITIONAL INFORMATION, PLEASE CONTACT:

**MELANIE JACKSON, CCIM, SIOR**  
Senior Director, Office  
+1 727 776 2780  
[melanie.jackson@cushwake.com](mailto:melanie.jackson@cushwake.com)

**TREY CARSWELL, SIOR**  
Managing Director, Industrial  
+1 813 204 5314  
[trey.carswell@cushwake.com](mailto:trey.carswell@cushwake.com)

**LISA ROSS, SIOR**  
Managing Director, Industrial  
+1 813 424 3211  
[lisa.ross@cushwake.com](mailto:lisa.ross@cushwake.com)

**SAM KOROLOS**  
Senior Associate  
+1 704 989 1327  
[sam.korolos@cushwake.com](mailto:sam.korolos@cushwake.com)

