

1243

OFFICE SPACE
FOR SUBLEASE

Islington Avenue

Suite 900 - 2,051 SF Available

DETAILS

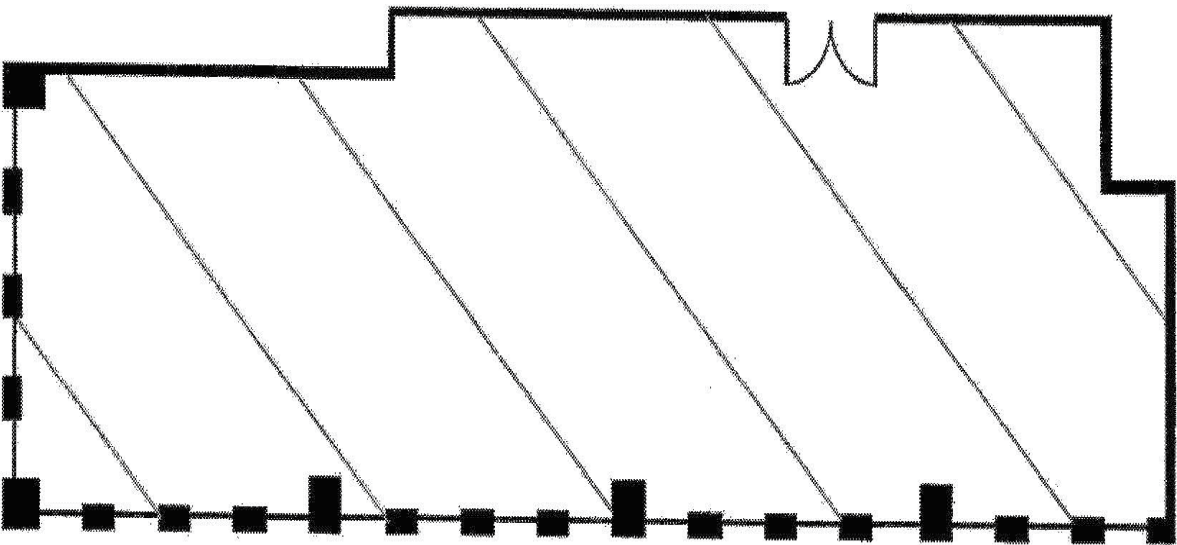
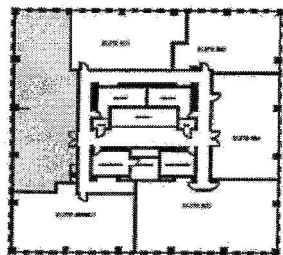
Available Space	SUITE 900 - 2,051 SF
Net Asking Rate:	Call Listing Agents
Additional Rent:	\$20.89 PSF (2020 Est.)
Occupancy:	Immediate
Term Expiry:	December 30, 2021

HIGHLIGHTS

- Completely ‘turnkey’ sublease opportunity – ideal for professional services firm or clinic
- Located directly adjacent to Islington TTC Subway Station
- 1 Parking Space can be made available
- Furniture potentially available



FLOOR PLAN



FOR MORE INFORMATION PLEASE CONTACT:

ADRIANA GARISTO*
Associate
416 359 2588
adriana.garisto@cushwake.com

LEE BILLINKOFF*
Vice Chair
416 359 2633
lee.billinkoff@cushwake.com

Cushman & Wakefield ULC, Brokerage* Sales Representative
No warranty or representation, expressed or implied, is made as to the accuracy of the information contained herein, and same is submitted subject to errors, omissions, change of price, rental or other conditions, withdrawal without notice, and to any specific listing condition, imposed by our principals.

