

WAREHOUSE + YARD FOR LEASE



ELDER CREEK RD.



DRONE  
AERIALS  
OF PROPERTY

8540-8580 ELDER CREEK RD  
SACRAMENTO, CA



CUSHMAN &  
WAKEFIELD



# 8540-8580 ELDER CREEK RD SACRAMENTO, CA

## PROPERTY FEATURES

Individual warehouse and yard spaces available for lease in South Sacramento. There are currently 2 contiguous vacant warehouse units with an additional ±10,545 SF of paved yard.

BUILDING 2	
Building Size:	10,343 SF
	<b>SUITE F</b>
Available SF:	1,163 SF
Loading Doors:	2 GL
Clear Height:	20'
Lease Rate:	\$1,400/mo MG
	<b>SUITE G</b>
Available SF:	2,108 SF
Loading Doors:	3 GL
Clear Height:	20'
Lease Rate:	\$2,530/mo MG

STORAGE SPACE 2	
Site Size:	2,448 SF
Lease Rate:	\$2,500/mo MG

YARD SPACE 4	
Site Size:	10,545 SF
Lease Rate:	\$1,600/mo MG

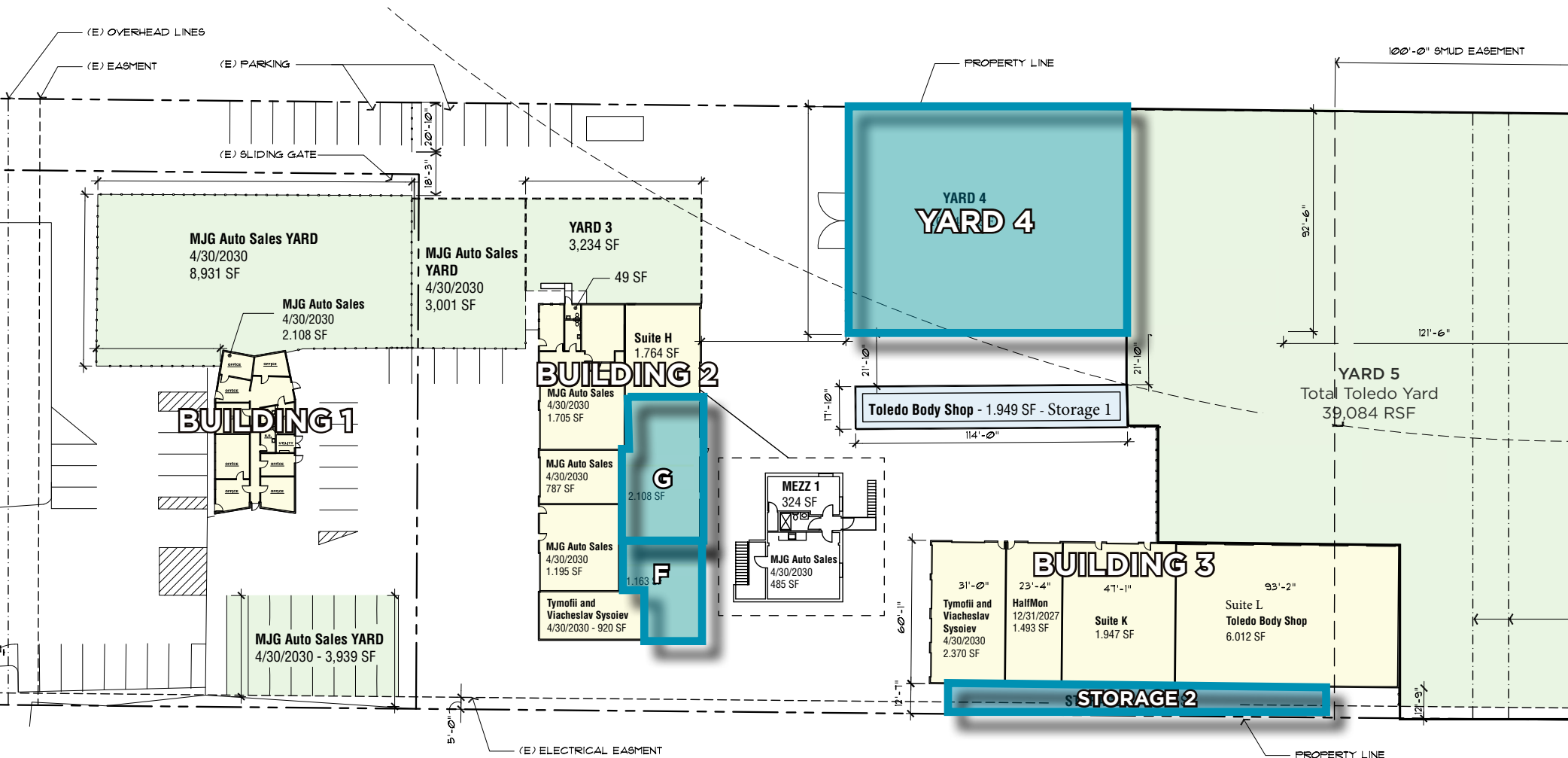


**BUILDING 2**



**BUILDING 2**

## SITE PLAN

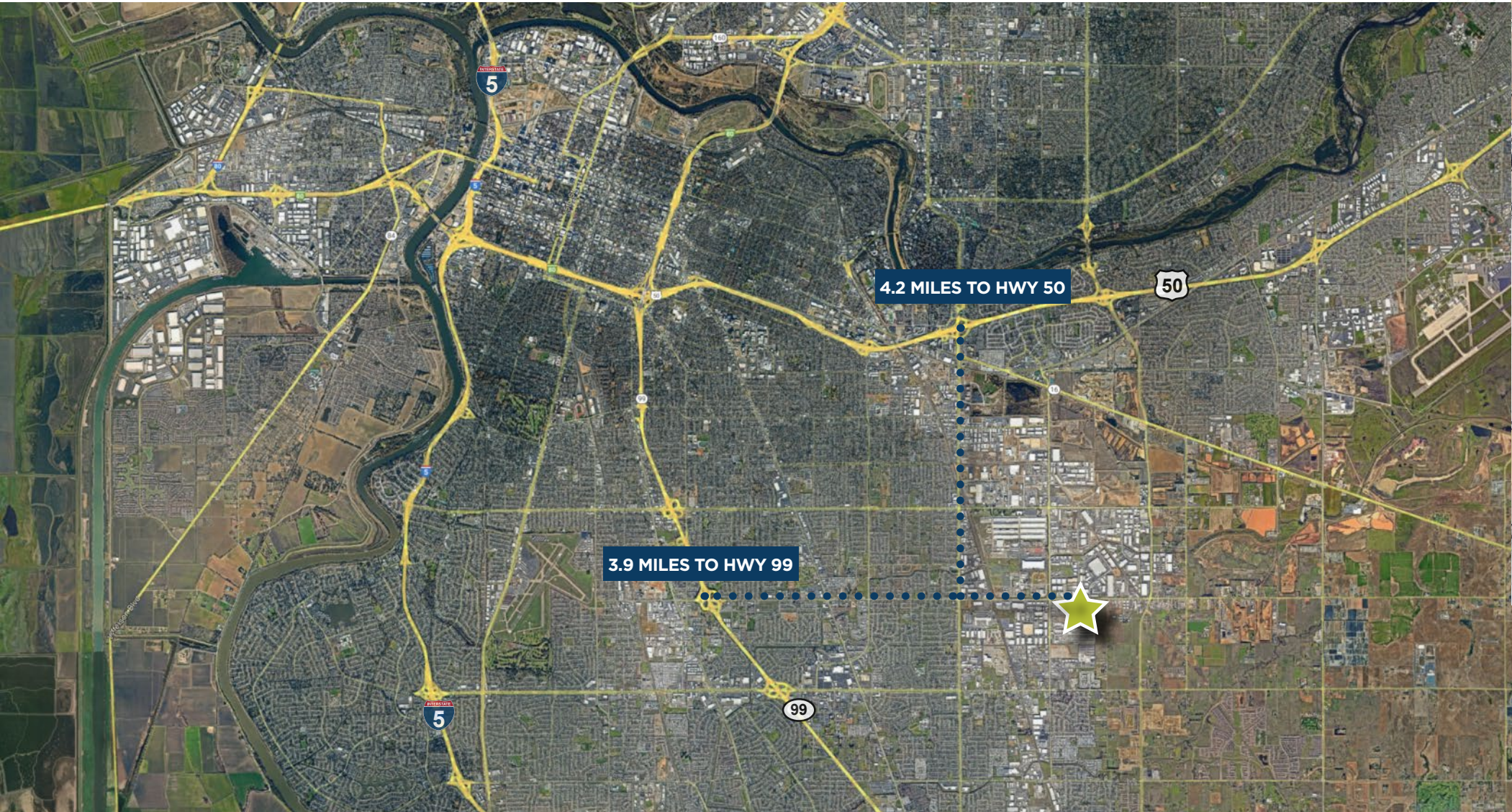




# 8540-8580 ELDER CREEK RD

## SACRAMENTO, CA

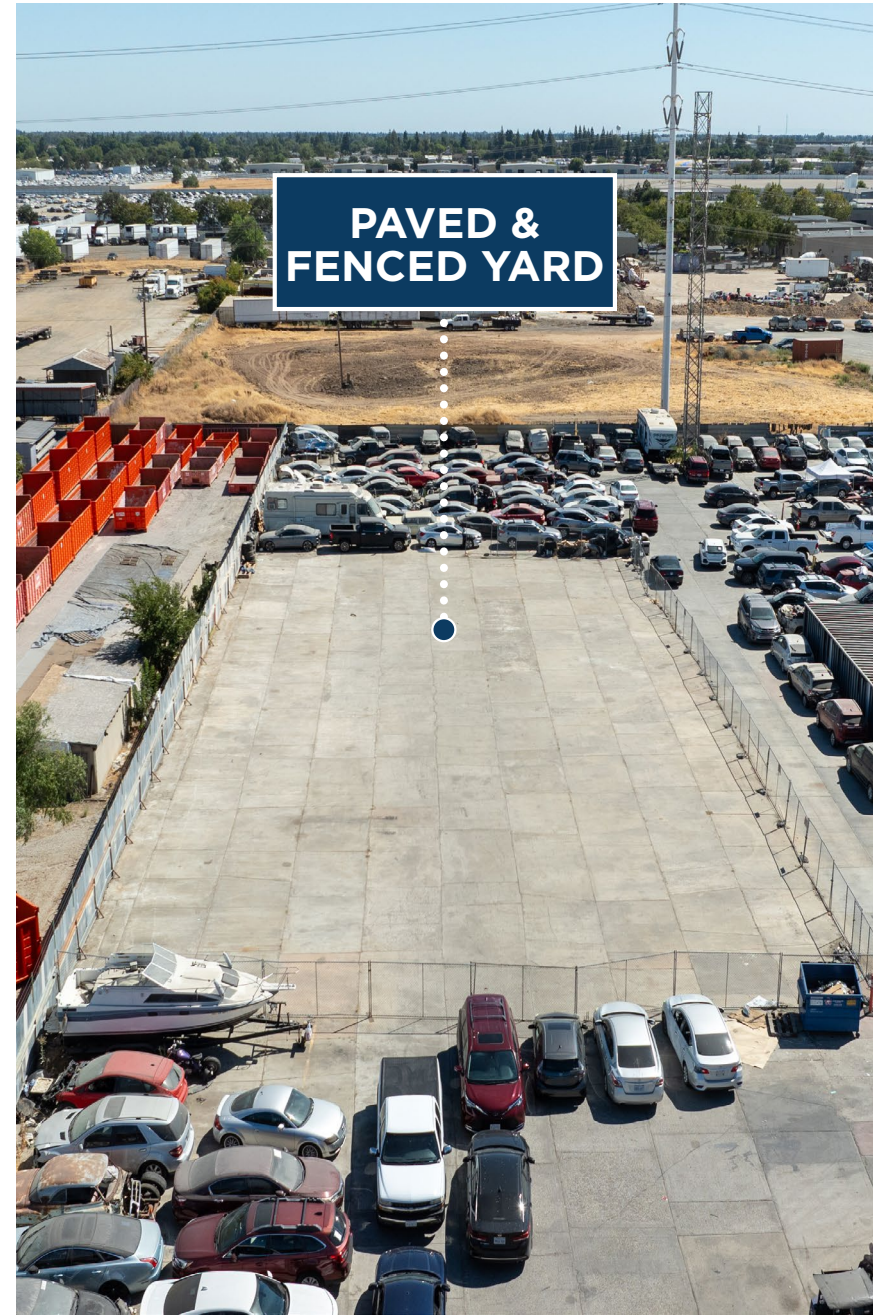
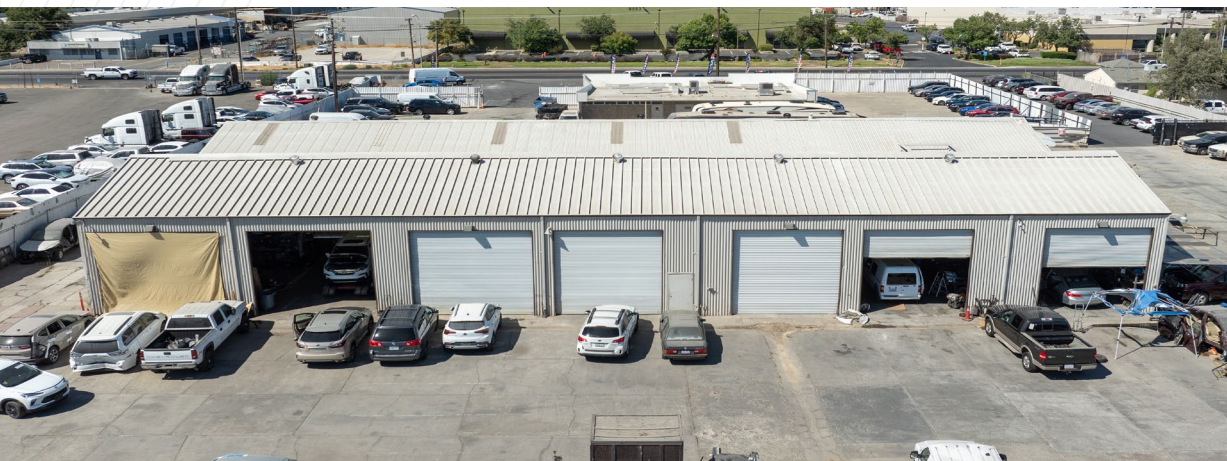
### LOCATION MAP





# 8540-8580 ELDER CREEK RD SACRAMENTO, CA

## PROPERTY PHOTOS







## FOR MORE INFORMATION, CONTACT:

### LENNY GOLD

Director  
+1 916 288 4443  
[lenny.gold@cushwake.com](mailto:lenny.gold@cushwake.com)  
CA LIC# 02055534

### CONNOR BELL

Senior Associate  
+1 916 890 3615  
[connor.bell@cushwake.com](mailto:connor.bell@cushwake.com)  
CA LIC# 02155224

©2024 Cushman & Wakefield. All rights reserved. The material in this presentation has been prepared solely for information purposes, and is strictly confidential. Any disclosure, use, copying or circulation of this presentation (or the information contained within it) is strictly prohibited, unless you have obtained Cushman & Wakefield's prior written consent. The views expressed in this presentation are the views of the author and do not necessarily reflect the views of Cushman & Wakefield. Neither this presentation nor any part of it shall form the basis of, or be relied upon in connection with any offer, or act as an inducement to enter into any contract or commitment whatsoever. NO REPRESENTATION OR WARRANTY IS GIVEN, EXPRESS OR IMPLIED, AS TO THE ACCURACY OF THE INFORMATION CONTAINED WITHIN THIS PRESENTATION, AND CUSHMAN & WAKEFIELD IS UNDER NO OBLIGATION TO SUBSEQUENTLY CORRECT IT IN THE EVENT OF ERRORS.

