

# 7310 W POTOMAC DR

Boise, Idaho

West Boise Office For Sale or Lease



**STEVE VLASSEK**  
Director  
Direct: +1 208 287 8439  
[steve.vlassek@cushwake.com](mailto:steve.vlassek@cushwake.com)

**DAVE WINDER CCIM**  
Director  
+1 208 287 9498  
[dave.winder@cushwake.com](mailto:dave.winder@cushwake.com)



**CUSHMAN &  
WAKEFIELD**

# 7310 W POTOMAC DR

Boise Idaho

## LISTING HIGHLIGHTS

**Sale Price:** \$825,000  
**Lease Price:** \$15.50/sf NNN  
**Building Size:** First Floor: 3148 sf Basement: 584 sf  
**Lot Size:** 0.460 Acre  
**Address:** 7310 W Potomac Dr Boise ID 83704  
**Parcel ID #:** R9323610020  
**Zoning:** City of Boise MX-3 (Mixed Use: Active)  
**Office:** 16- offices (12) privates and (4)- 3 person/flex offices

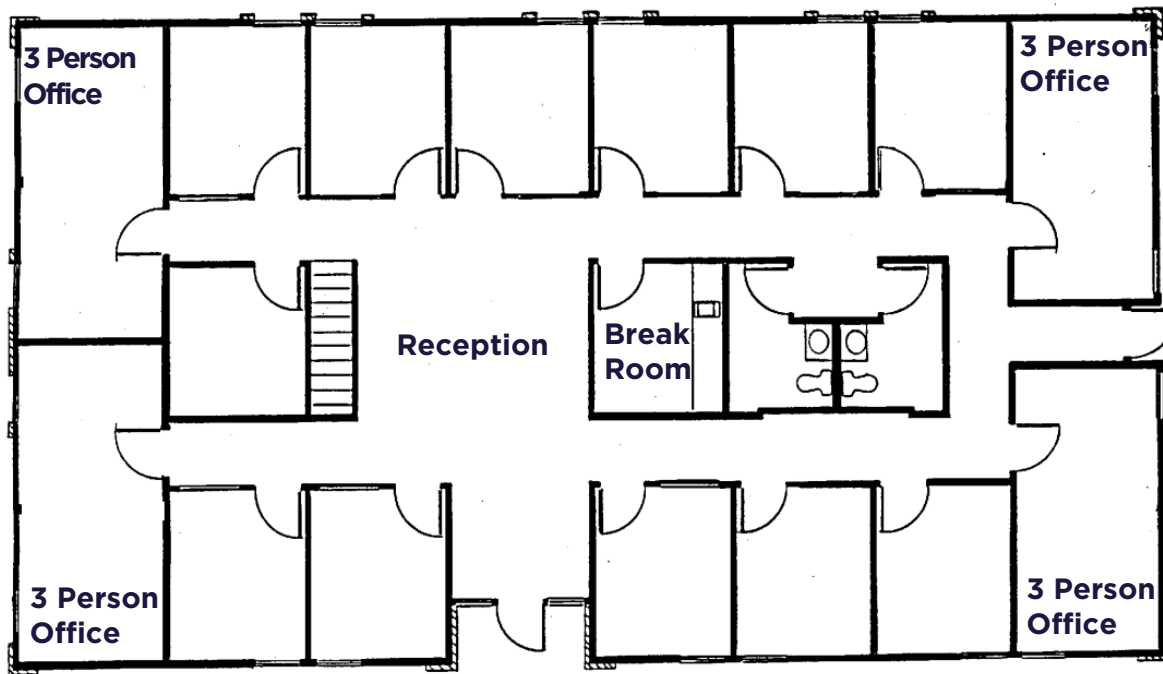
- High-visibility corner lot in a busy mall area
- Multiple private offices inside
- Spacious lot with mature landscaping
- 22 Parking spots w/ 1 Handicap
- Suitable for a wide range of uses
- Accessible via multiple VRT bus routes



# 7310 W POTOMAC DR

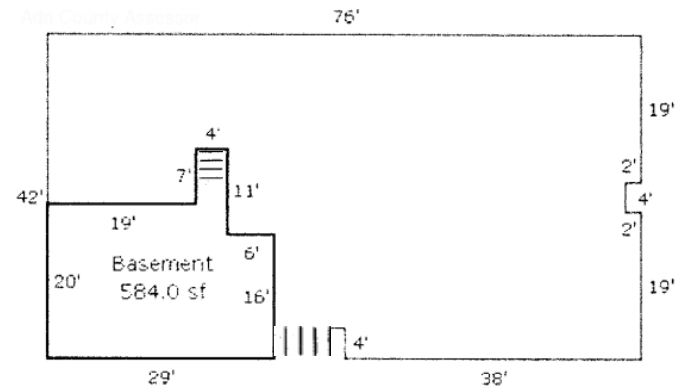
Boise Idaho

Main Level



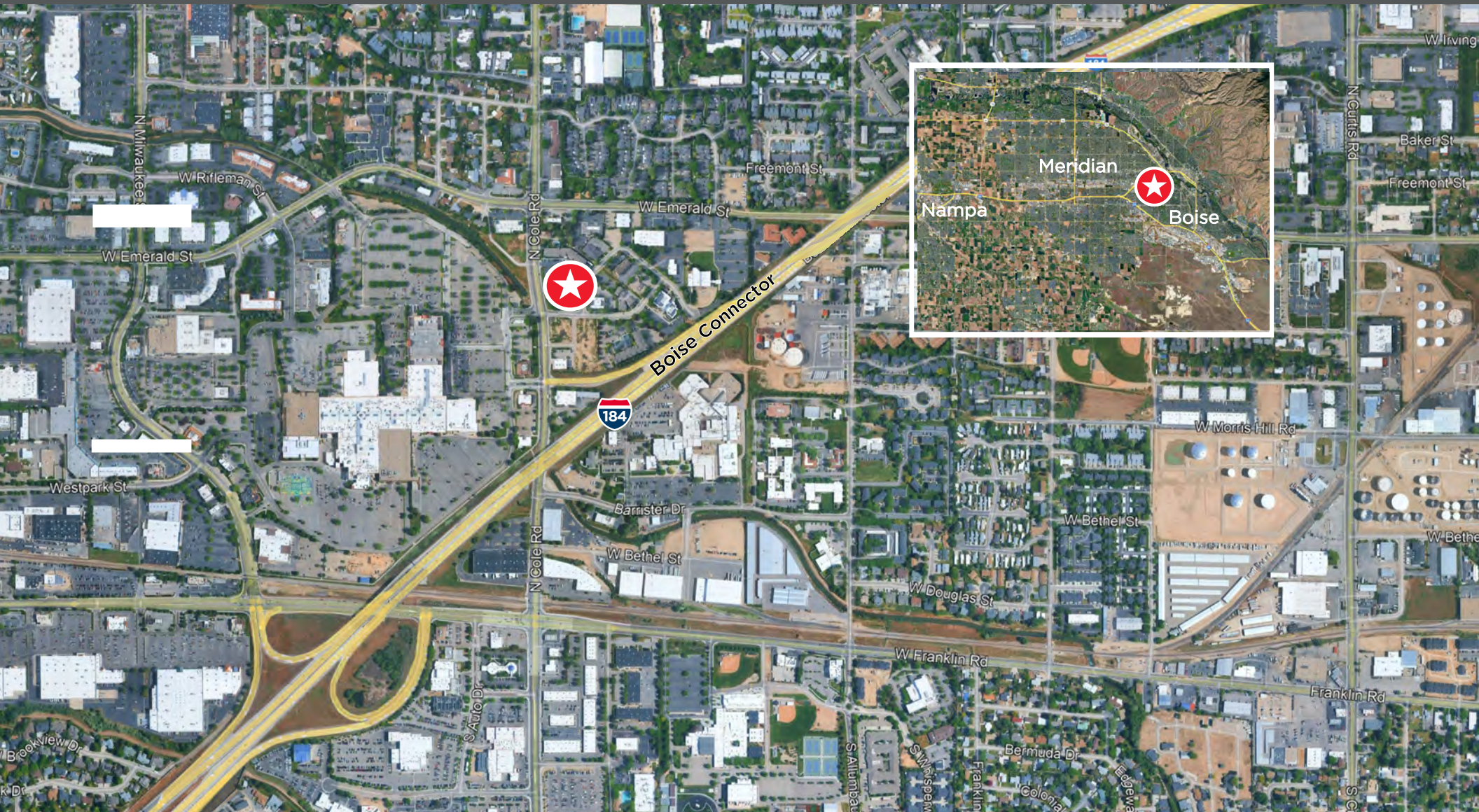
Lower Level

Sketch



# 7310 W POTOMAC DR

Boise Idaho



# 7310 W POTOMAC DR

Boise Idaho



# 7310 W POTOMAC DR

## BOISE, ID 83704

### WEST BOISE OFFICE SPACE FOR SALE OR LEASE

**Steve Vlassek** / Director / +1 208 287 8439/ [steve.vlassek@cushwake.com](mailto:steve.vlassek@cushwake.com)

**Dave Winder CCIM** / Director / +1 208 207 9498 / [dave.winder@cushwake.com](mailto:dave.winder@cushwake.com)

999 W Main Street | Suite 1300 | Boise, ID 83702 | +1 208 287 9500

**CUSHMANWAKEFIELD.COM**



©2025 Cushman & Wakefield. All rights reserved. The information contained in this communication is strictly confidential. This information has been obtained from sources believed to be reliable but has not been verified. NO WARRANTY OR REPRESENTATION, EXPRESS OR IMPLIED, IS MADE AS TO THE CONDITION OF THE PROPERTY (OR PROPERTIES) REFERENCED HEREIN OR AS TO THE ACCURACY OR COMPLETENESS OF THE INFORMATION CONTAINED HEREIN, AND SAME IS SUBMITTED SUBJECT TO ERRORS, OMISSIONS, CHANGE OF PRICE, RENTAL OR OTHER CONDITIONS, WITHDRAWAL WITHOUT NOTICE, AND TO ANY SPECIAL LISTING CONDITIONS IMPOSED BY THE PROPERTY OWNER(S). ANY PROJECTIONS, OPINIONS OR ESTIMATES ARE SUBJECT TO UNCERTAINTY AND DO NOT SIGNIFY CURRENT OR FUTURE PROPERTY PERFORMANCE.