



FOR LEASE

**NORTH CENTRAL
COMMERCE CENTER
COON RAPIDS, MN**

22,393 - 54,815 SF FOR LEASE

AVAILABLE NOW

BRENT MASICA
Executive Managing Director
+1 952 893 8231
brent.masica@cushwake.com

DANNY MCNAMARA
Managing Director
+1 952 893 8895
danny.mcnamara@cushwake.com

3500 American Blvd W, Suite 200
Minneapolis, MN
Main +1 952 831 1000
cushmanwakefield.com

FOR LEASE

North Central Commerce Center 9525 East River Rd, Coon Rapids, MN



22,393 - 54,815 SF AVAILABLE

Property Highlights

- Class A warehouse space
- Dock and drive in loading
- Direct access to Hwy 610
- Men's and Women's bathrooms in place



Contact

BRENT MASICA
Executive Managing Director
+1 952 893 8231
brent.masica@cushwake.com

DANNY MCNAMARA
Managing Director
+1 952 893 8895
danny.mcnamara@cushwake.com

FOR LEASE
North Central Commerce Center
9525 East River Rd, Coon Rapids, MN



Building Features

BUILDING SIZE 121,000 SF

AVAILABLE SQUARE FEET 54,815 SF Warehouse
Divisible to 22,393 SF

LOADING 4 docks
1 drive in

CLEAR HEIGHT 28'

LEASE RATES

Negotiable

**ESTIMATED
2026 TAX/CAM**

\$2.10 PSF CAM
\$3.07 PSF Tax
\$5.17 PSF Total

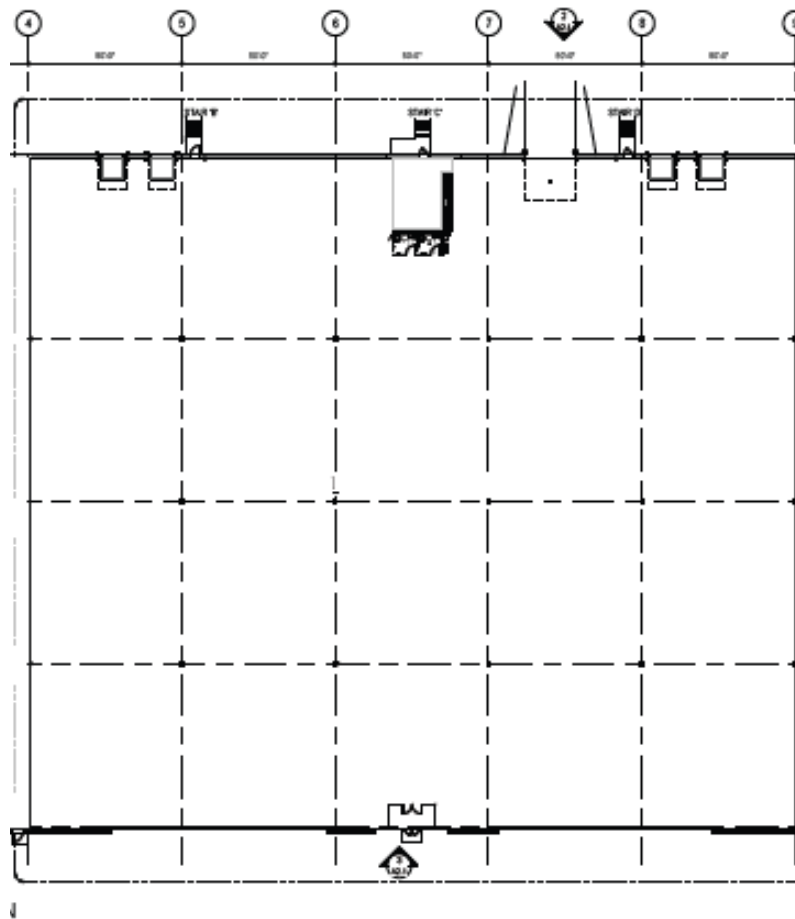
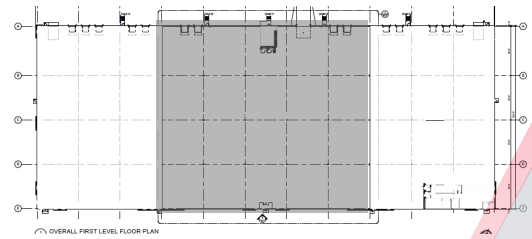


Floor Plan



54,815 SF TOTAL
DIVISIBLE TO 22,393 SF

4 DOCKS
1 DRIVE IN



Contact

BRENT MASICA
Executive Managing Director
+1 952 893 8231
brent.masica@cushwake.com

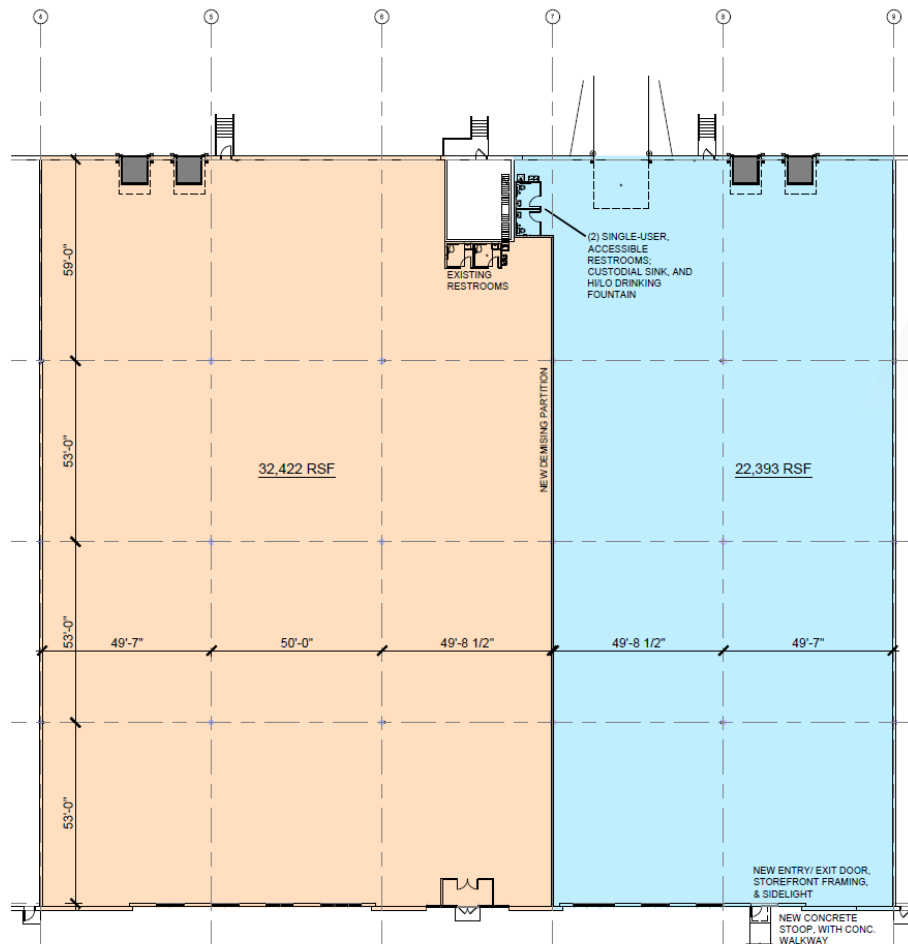
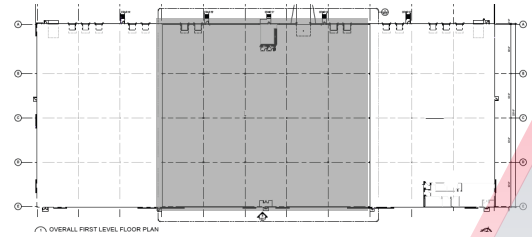
DANNY MCNAMARA
Managing Director
+1 952 893 8895
danny.mcnamara@cushwake.com

Floor Plan



54,815 SF TOTAL
DIVISIBLE OPTIONS

4 DOCKS
1 DRIVE IN



Contact

BRENT MASICA
Executive Managing Director
+1 952 893 8231
brent.masica@cushwake.com

DANNY MCNAMARA
Managing Director
+1 952 893 8895
danny.mcnamara@cushwake.com