



**CUSHMAN &
WAKEFIELD**



FOR LEASE

**NORTH CENTRAL
COMMERCE CENTER
COON RAPIDS, MN**

30,000 - 54,815 SF FOR LEASE

AVAILABLE NOW

BRENT MASICA
Executive Managing Director
+1 952 893 8231
brent.masica@cushwake.com

DANNY MCNAMARA
Managing Director
+1 952 893 8895
danny.mcnamara@cushwake.com

3500 American Blvd W, Suite 200
Minneapolis, MN
Main +1 952 831 1000
cushmanwakefield.com

FOR LEASE

North Central Commerce Center
9525 East River Rd, Coon Rapids, MN



33,000 - 54,815 SF AVAILABLE

Property Highlights

- Class A warehouse space
- Dock and drive in loading
- Direct access to Hwy 610
- Men's and Women's bathrooms in place



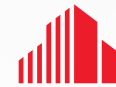
Contact

BRENT MASICA
Executive Managing Director
+1 952 893 8231
brent.masica@cushwake.com

DANNY MCNAMARA
Managing Director
+1 952 893 8895
danny.mcnamara@cushwake.com

FOR LEASE

North Central Commerce Center 9525 East River Rd, Coon Rapids, MN



**CUSHMAN &
WAKEFIELD**

Building Features

BUILDING SIZE 121,000 SF

LEASE RATES

Negotiable

**AVAILABLE
SQUARE FEET** 54,815 SF Warehouse
Divisible by 30,000 SF

**ESTIMATED
2025 TAX/CAM**

\$5.15 PSF Total

LOADING 4 docks
1 drive in

CLEAR HEIGHT 28'

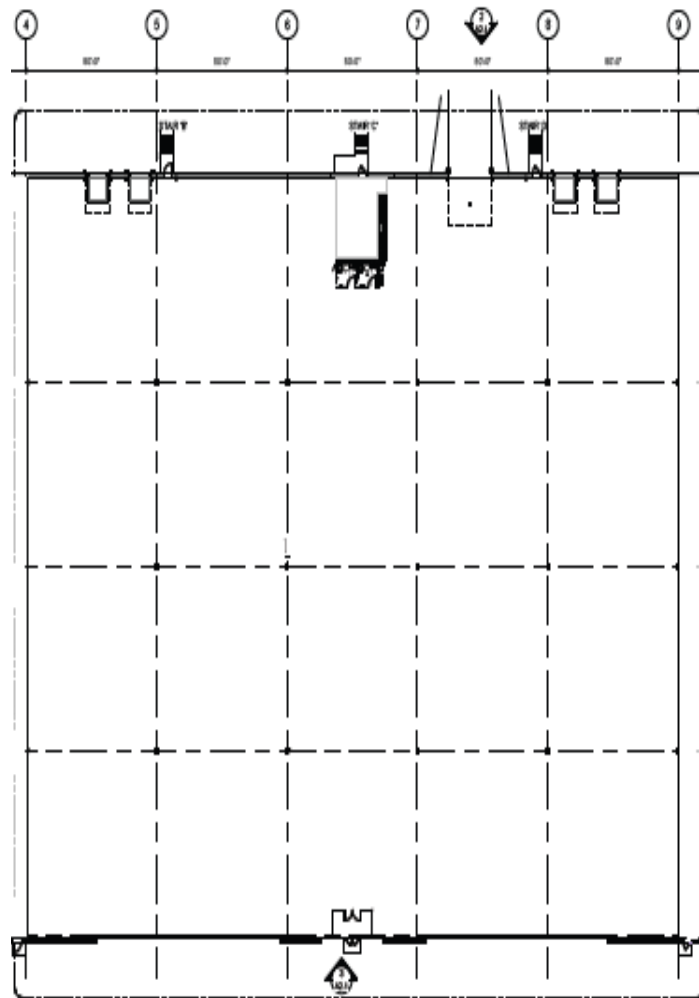
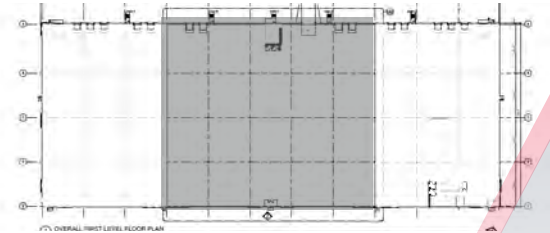


Floor Plan

54,815 SF TOTAL
DIVISIBLE BY 33,000 SF

4 DOCKS

1 DRIVE IN



Contact

BRENT MASICA
Executive Managing Director
+1 952 893 8231
brent.masica@cushwake.com

DANNY MCNAMARA
Managing Director
+1 952 893 8895
danny.mcnamara@cushwake.com