



HAZARD CENTER



7676 HAZARD CENTER DRIVE | SAN DIEGO, CA

REMARKABLY UNCOMMON

The only mixed-use office project in Mission Valley, Hazard Center is purpose-built for professionals, creators, and innovators alike.

Here, business, community, and lifestyle converge—giving you space to grow, connect, and thrive.

From scaling a business to hosting clients in style, every detail is designed to support how you work—and how you live.

CLASS A OFFICE TOWER

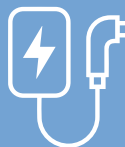
—
273,710 RSF ACROSS 15 STORIES



LEED EB O+M
GOLD CERTIFIED



ENERGY STAR RATED
FOR 18 YEARS



AMPLE PARKING
WITH EV CHARGING



PROPERTY SPECIFICATIONS



BUILDING OVERVIEW:

- RSF: 273,710
- Floors: 15
- Average Floor Plate: ~20,000 SF
- Year Built: 1990 / Renovated: 2017 & 2025
- Hours: Monday - Friday 8am-6pm, Saturday 9am-1pm



AMENITIES & SERVICES:

- Fitness Center
- Showers & Lockers with Towel Service
- Car Detailing Service
- On-Site Security Guard Desk (24/7)
- Roving Security
- On-Site Coffee/Deli Cart
- Restaurants and Eateries on-site
- DoubleTree Hotel On-Site (Pool, Tennis, Restaurant, and Banquet / Event Center)



PARKING:

- Parking Ratio: 4/1,000
- Parking Features:
 - 3-Level Covered Parking Garage with direct access to 1st Floor Lobby
 - Dedicated Visitor Spaces
 - EV Charging Stations
 - Auto-Detailing Service
 - Reserved Parking Available



SUSTAINABILITY & CERTIFICATIONS:

- LEED O+M Gold Certified
- WELL Certification
- Energy Star Rating = 88
- Multi-Year International Toby Award Winner
- Walk Score®: Very Walkable (81)



LOCATION:

- High Visibility with Direct Access to CA-163 and Friars Road
- Trolley Stop Directly On-Site (Hazard Center Trolley Stop)
- NEW access directly to Fashion Valley Mall via Hazard Center Drive extension and walkway



CEILING HEIGHTS:

- Finished Ceiling Height: 9'
- Slab to Slab Heights:
 - 20' (floor 1 & 2)
 - 13' (floors 3-15)



ELEVATORS:

- 5 Dedicated Passenger Elevators
- 1 Dedicated Freight Elevator



FROM LUNCH BREAKS TO ERRANDS — EVERYTHING IS STEPS AWAY

AT THE CENTER OF IT ALL



ON-SITE AMENITIES

4 FOOD & BEVERAGE

2 ENTERTAINMENT

9 FITNESS & BEAUTY

9 BUSINESS SERVICES

WOOD RANCH
BBQ & GRILL

BJ's

NEGIHAMA

BARNES & NOBLE

Orangetheory
FITNESS

WHICH
WICH
SUPERIOR SANDWICHES

ON-SITE FITNESS CENTER, CONFERENCE FACILITY AND TENANT LOUNGE/EVENT SPACE

PRIME LOCATION AT THE INTERSECTION OF HWY 163 & FRIARS ROAD, PROVIDING QUICK ACCESS TO FIVE MAJOR FREEWAYS

DIRECT ACCESS TO HAZARD CENTER TROLLEY STATION

GENEROUS COVERED PARKING & EV CHARGING

THE **LANDING** LAZ RD
SAN DIEGO x CALIFORNIA

NEW RETAIL PLAZA COMING SOON!





COMING IN EARLY 2026

TRANSFORMING OUR RETAIL SITE & NEIGHBORHOOD FOR A SUPERIOR EXPERIENCE

THE LANDING HZ RD

SAN DIEGO x CALIFORNIA



COMING IN EARLY 2026

GREEN OASIS. SHARED MOMENTS. SIGNATURE SCENE.

The Landing HZRD is a lush, go-to hangout—where native plants meet cozy seating, and every corner is built for connection. Whether you're grabbing coffee, chilling between meetings, or heading to an event, this flexible outdoor space plugs right into your day—and is the heartbeat of the center.

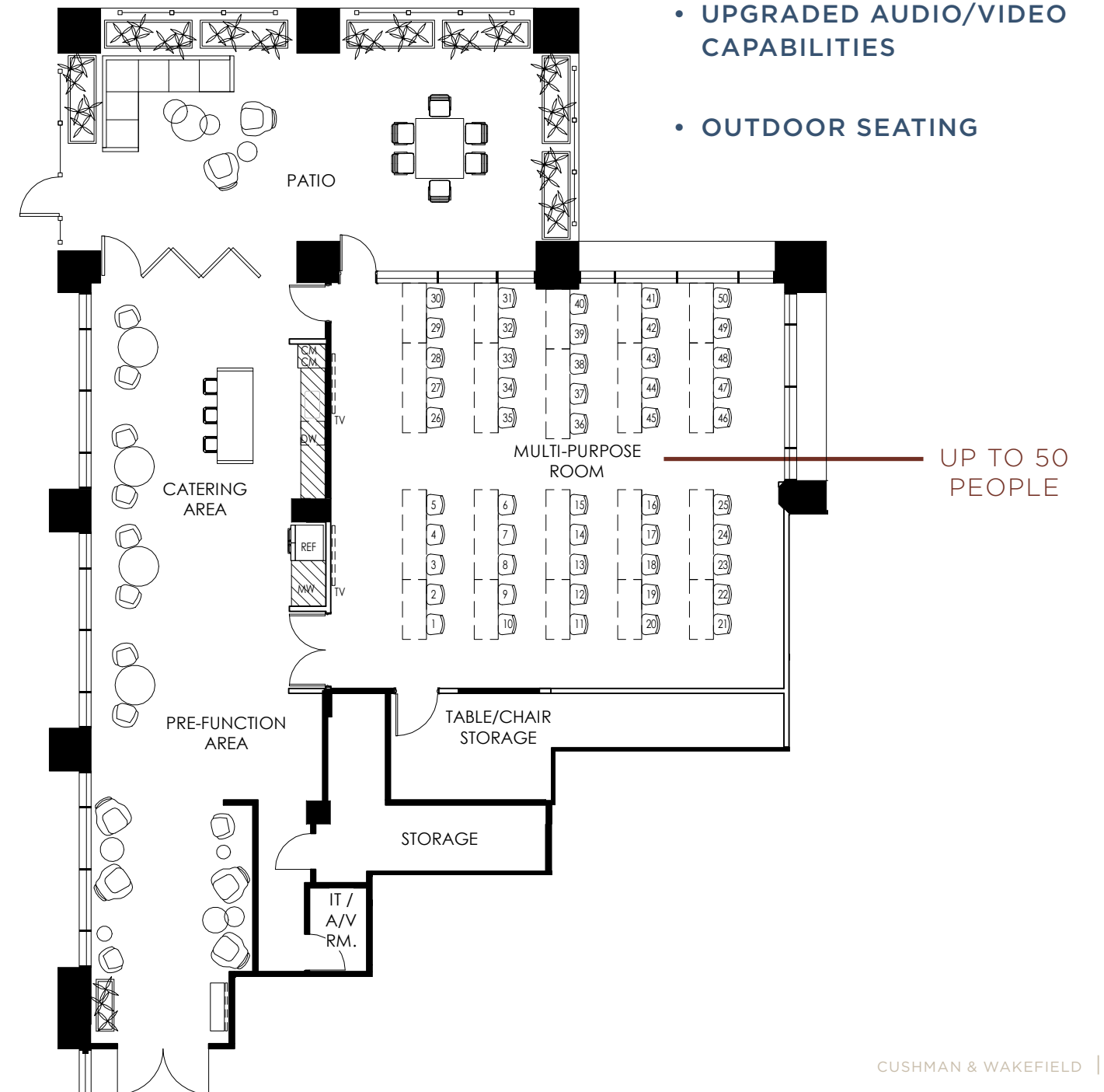




EVENT SPACE & CONFERENCE CENTER COMING 2026!

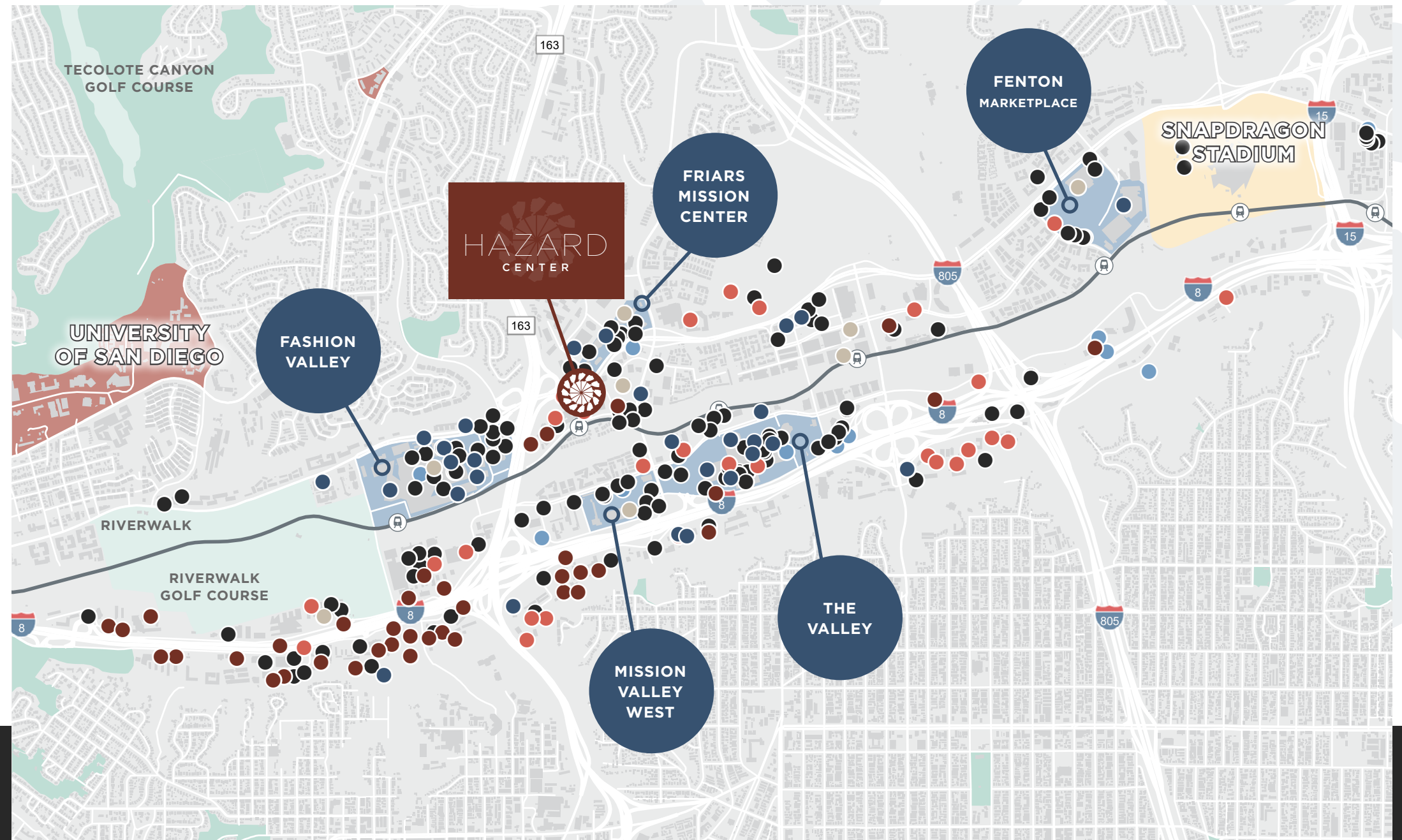
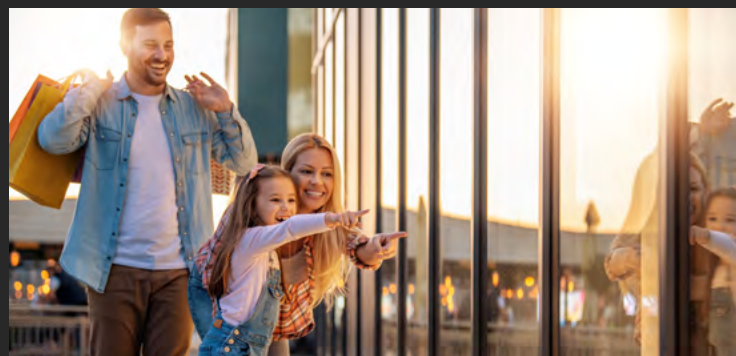
PURPOSE-BUILT FOR COLLABORATION

Hazard Center's new conference and event space is built to impress—featuring a private terrace, upgraded audio/visual capabilities, and flexible indoor-outdoor feature for up to 50 guests. Whether it's a team event, product launch, or community mixer, this purpose-built venue brings high-performance tech and elevated vibes to every event.



IN GOOD COMPANY

Located in the heart of Mission Valley, Hazard Center offers immediate access to on-site dining and retail, with Fashion Valley and The Valley just minutes away. Nearby golf courses, Snapdragon Stadium, and the San Diego Trolley Green Line adds convenience and entertainment, while the upcoming 200-acre Riverwalk project will further elevate the area with parks, housing, and mixed-use space.



MISSION VALLEY AMENITIES

146
RESTAURANTS

12
CAFES

28
FITNESS CENTERS

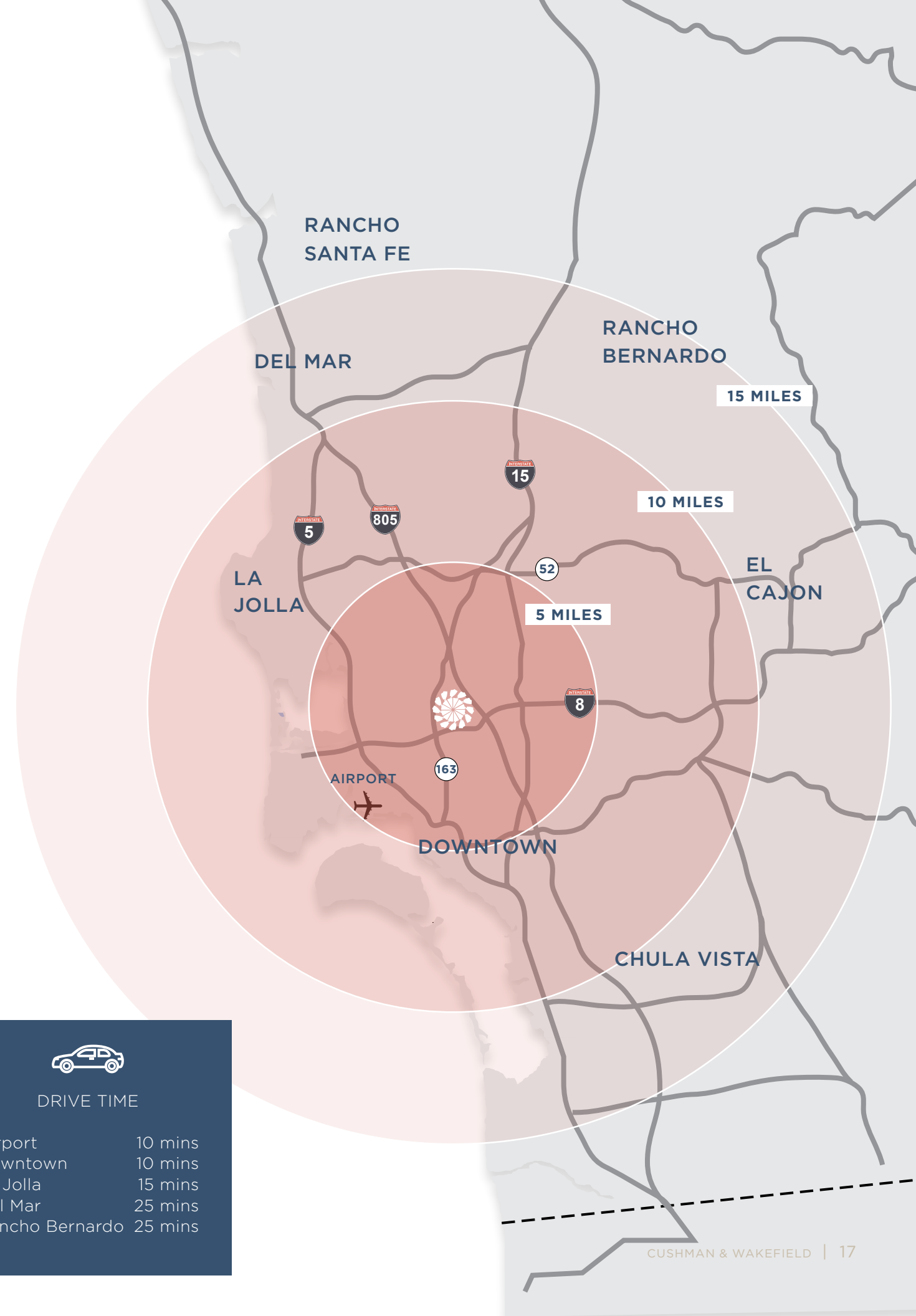
42
HOTELS


29
RETAIL OPTIONS

8
GROCERY STORES

MISSION VALLEY MOBILITY, CITYWIDE REACH.

Located at the crossroads of San Diego's major freeways and just steps from the Green Line Trolley, Hazard Center offers seamless access to Downtown, the coast, and beyond. Whether you're commuting from La Jolla or Flying in to San Diego International Airport, getting here is easy—so you can focus on what moves your business forward.



 DRIVE TIME

Airport	10 mins
Downtown	10 mins
La Jolla	15 mins
Del Mar	25 mins
Rancho Bernardo	25 mins



RENOVATIONS UNDERWAY!

FLEXIBLE SUITES, TAILORED TO YOU!

> 5,000 SF AVAILABILITIES

Suite	Square Footage	Status	Price	Virtual Tour
860	2,056	Vacant	\$3.75/SF FSG	VIEW TOUR
1540	2,062	Vacant	\$3.75/SF FSG	VIEW TOUR
1450	2,533	9/1/2026	\$4.00/SF FSG	
845	2,914	8/1/2026	\$3.75/SF FSG	
810	3,977	Vacant	\$3.75/SF FSG	VIEW TOUR
750	3,813	Vacant	\$3.75/SF FSG	VIEW TOUR
100	4,918	Vacant	\$3.75/SF FSG	VIEW TOUR
845/860	4,970	8/1/2026	\$3.75/SF FSG	

5,000-10,000 SF AVAILABILITIES

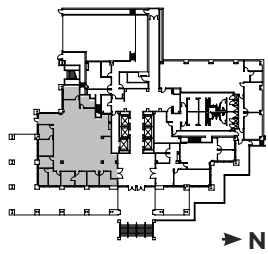
Suite	Square Footage	Status	Price	Virtual Tour
650	5,182	Vacant	\$3.75/SF FSG	VIEW TOUR
300	5,700	Vacant	\$3.75/SF FSG	VIEW TOUR
400	6,313	Vacant	\$3.75/SF FSG	
200	7,788	Vacant	\$3.75/SF FSG	VIEW TOUR
1360	8,411	Vacant	\$3.75/SF FSG	VIEW TOUR
1150	7,560	10/1/2026	\$3.75/SF FSG	
1100	9,685	Vacant	\$3.75/SF FSG	

<10,000 SF AVAILABILITIES

Suite	Square Footage	Status	Price	Virtual Tour
500	10,413	4/1/2027	\$3.75/SF FSG	
1100/1150	17,245	10/1/2026	\$3.75/SF FSG	

AS BUILT

SUITE 100 - 4,918 RSF



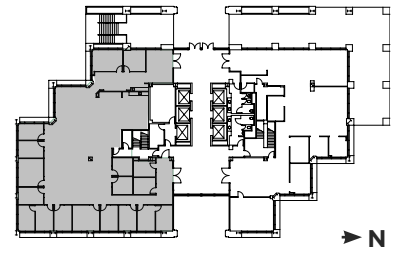
[VIEW TOUR](#)



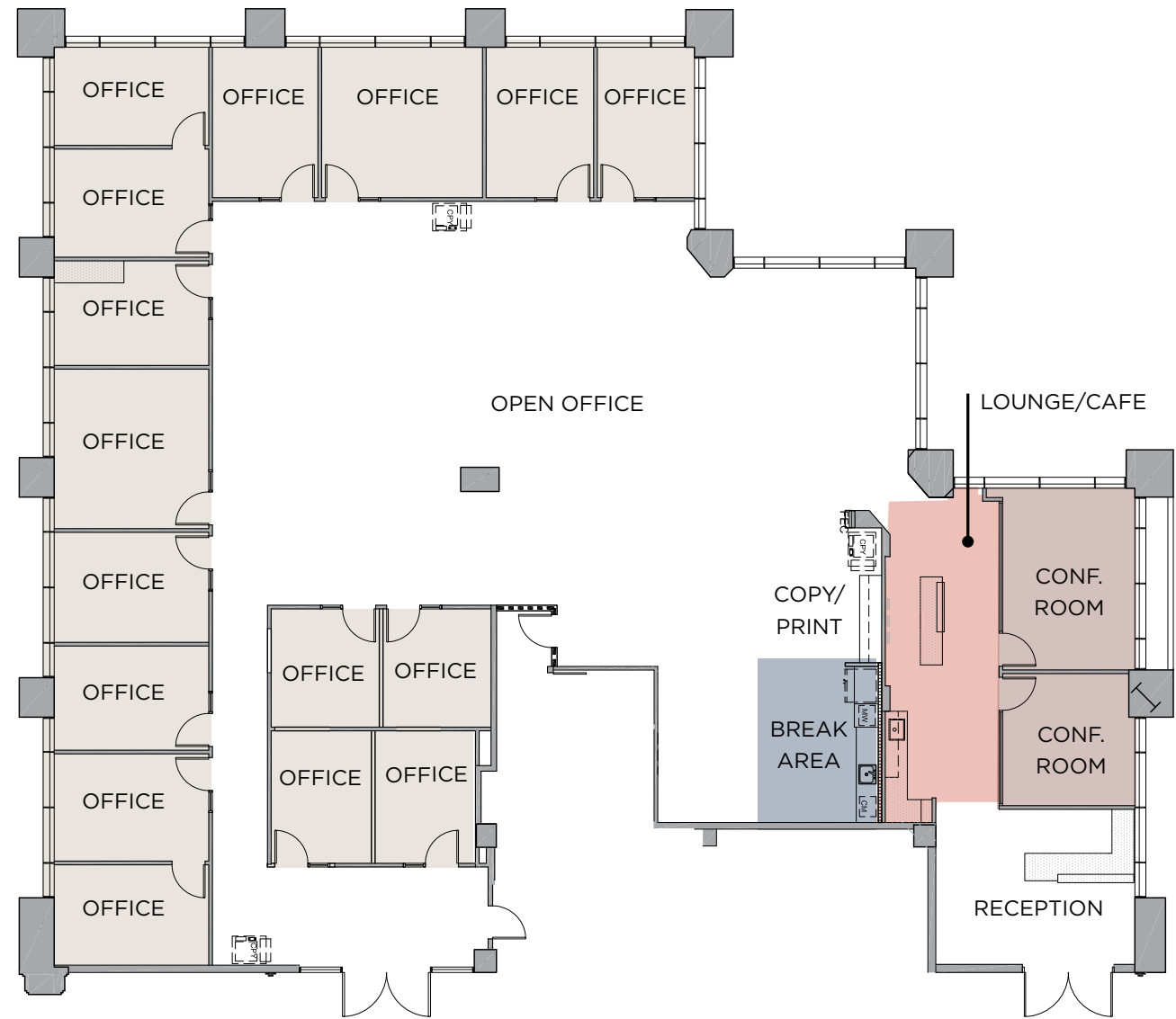
- 11 PRIVATE OFFICES
- 1 BREAK AREA

AS BUILT

SUITE 200 - 7,788 RSF



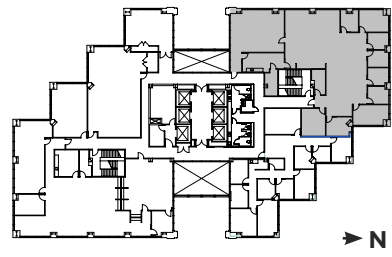
[VIEW TOUR](#)



- 16 PRIVATE OFFICES
- 1 BREAK AREA
- 2 CONFERENCE ROOMS
- 1 LOUNGE/CAFE AREA

AS BUILT

SUITE 300 - 5,700 RSF



[VIEW TOUR](#)

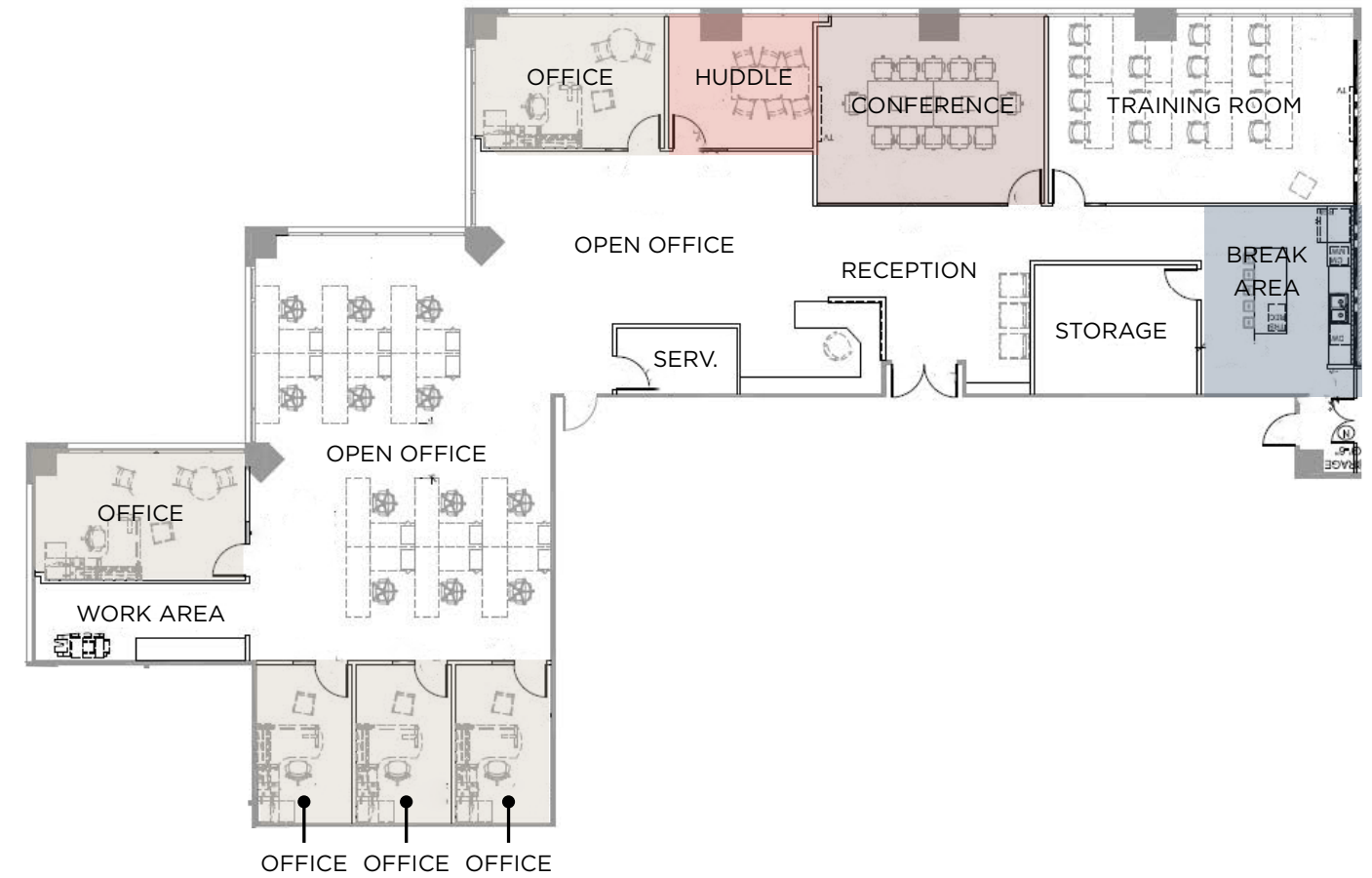
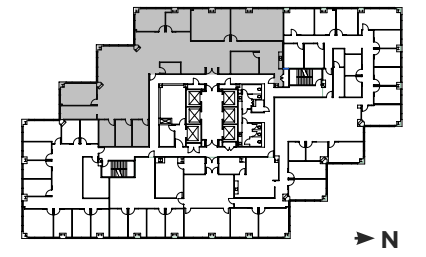


8 PRIVATE OFFICES
1 BREAK AREA

1 CONFERENCE ROOM

AS BUILT

SUITE 400 - 6,313 RSF

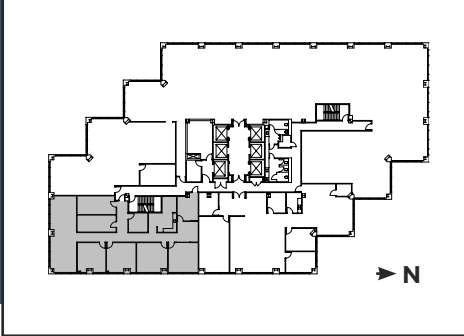


5 PRIVATE OFFICES
1 BREAK AREA

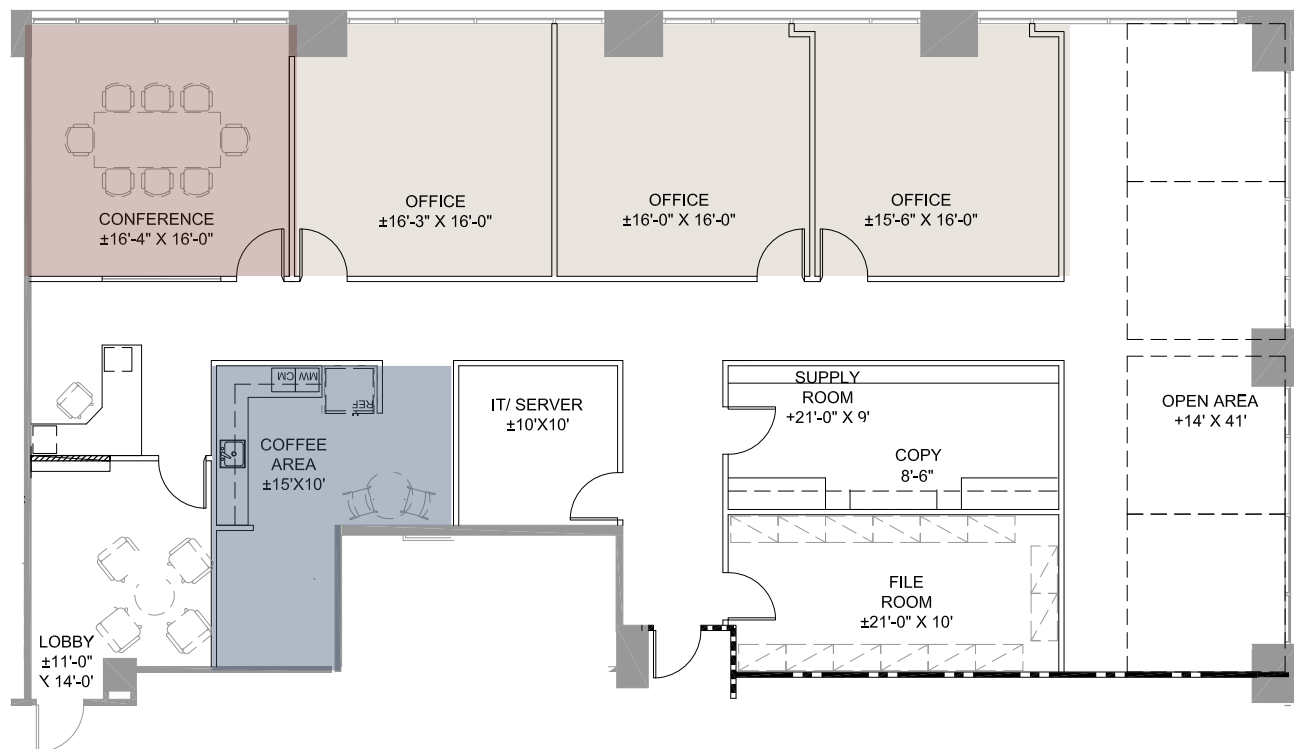
1 CONFERENCE ROOM
1 HUDDLE ROOM

AS BUILT

SUITE 750 - 3,813 RSF



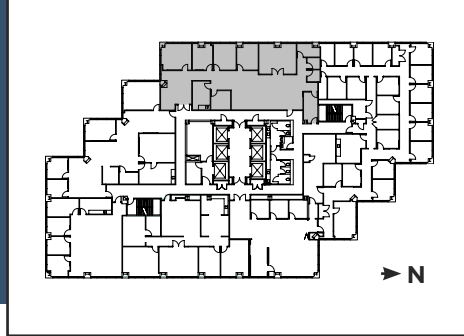
[VIEW TOUR](#)



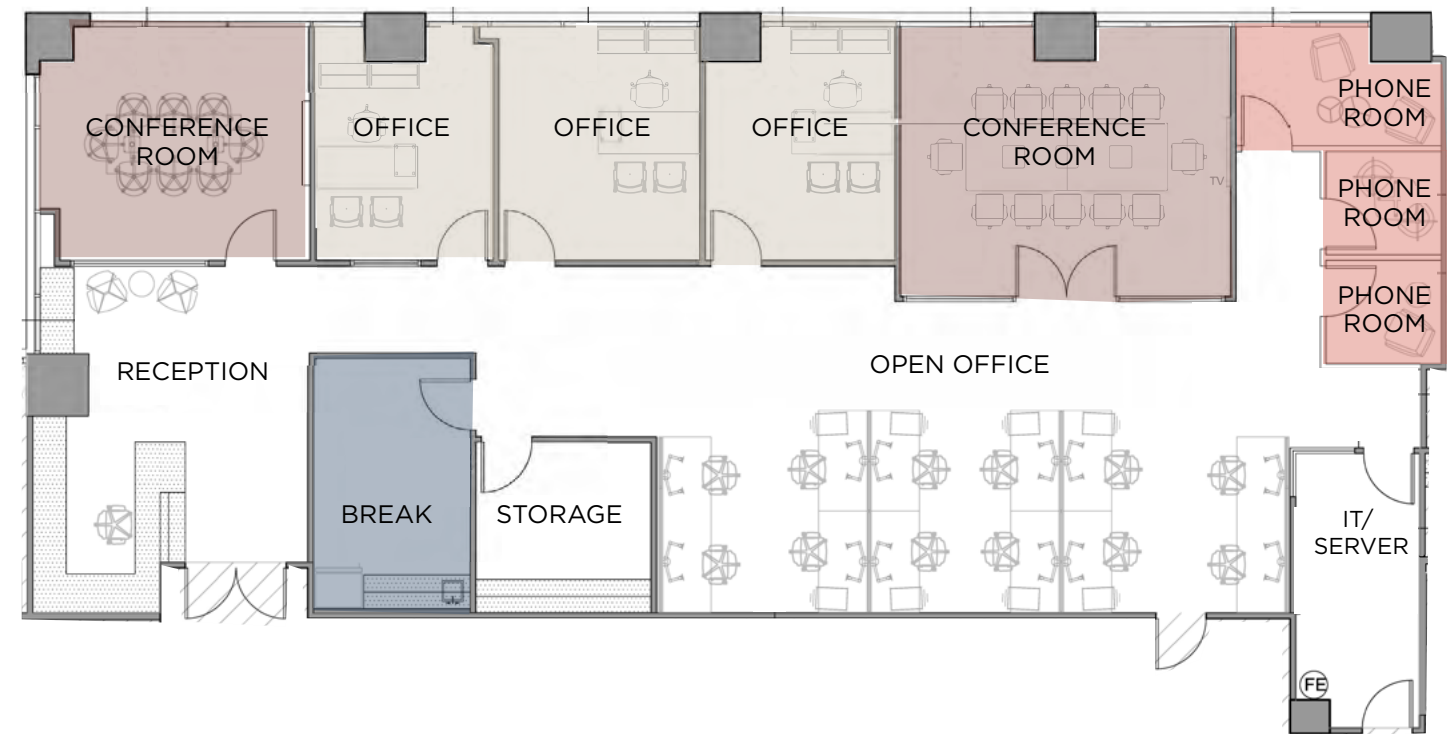
- 3 PRIVATE OFFICES
- 1 CONFERENCE ROOM
- 1 BREAK AREA

AS BUILT

SUITE 810 - 3,977 RSF



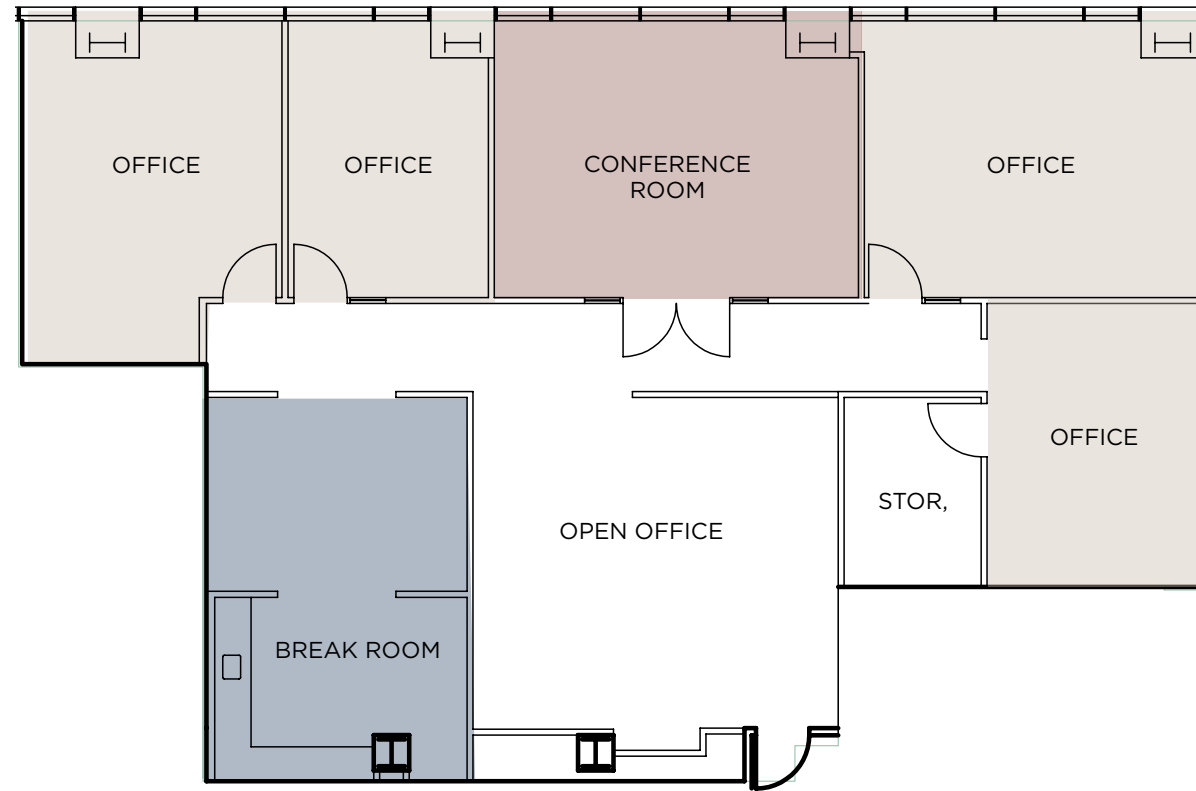
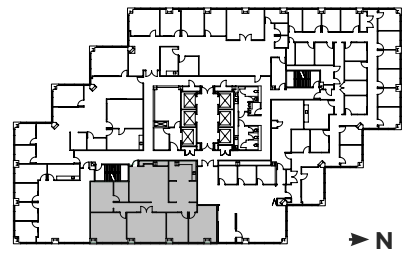
[VIEW TOUR](#)



- 12 APPROX. CUBES IN OPEN OFFICE
- 3 PRIVATE OFFICES
- 2 CONFERENCE ROOMS
- 1 BREAK AREA
- 3 PHONE ROOM

AS BUILT - AVAILABLE AUGUST 2026

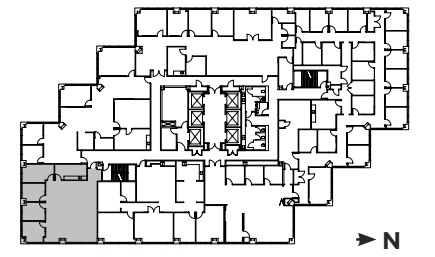
SUITE 845 - 2,914 SF



- 4 PRIVATE OFFICES
- 1 CONFERENCE ROOM
- 1 BREAK AREA

AS BUILT

SUITE 860 - 2,056 RSF



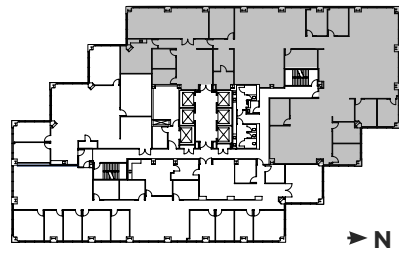
[VIEW TOUR](#)



- 4 PRIVATE OFFICES
- 1 BREAK AREA

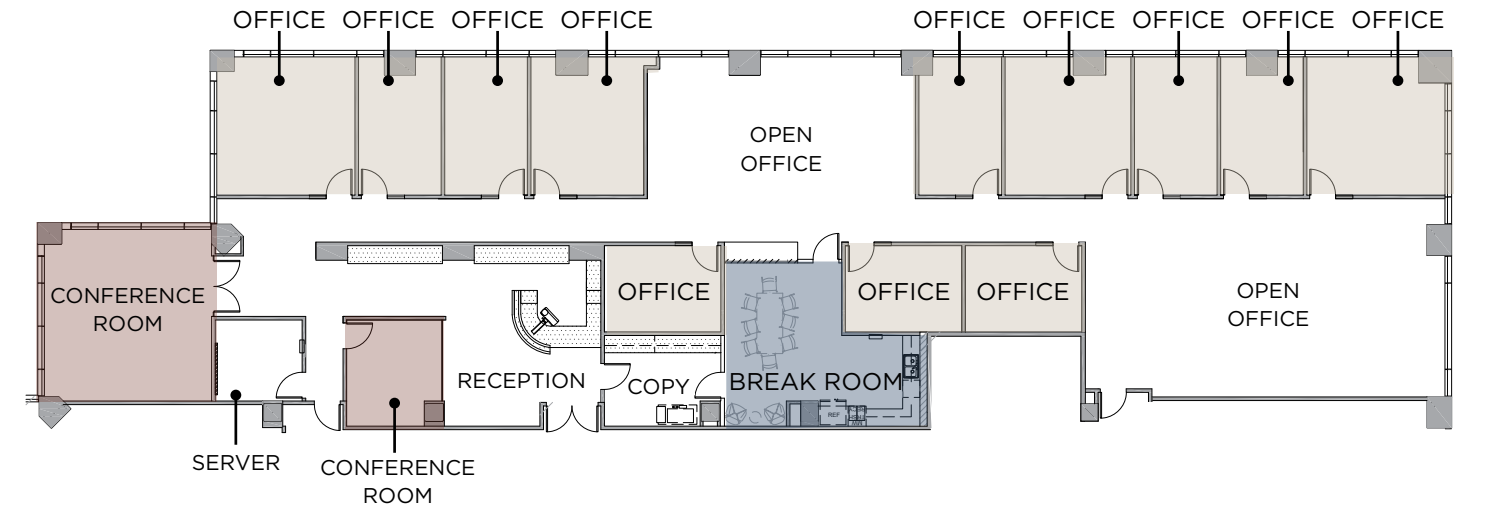
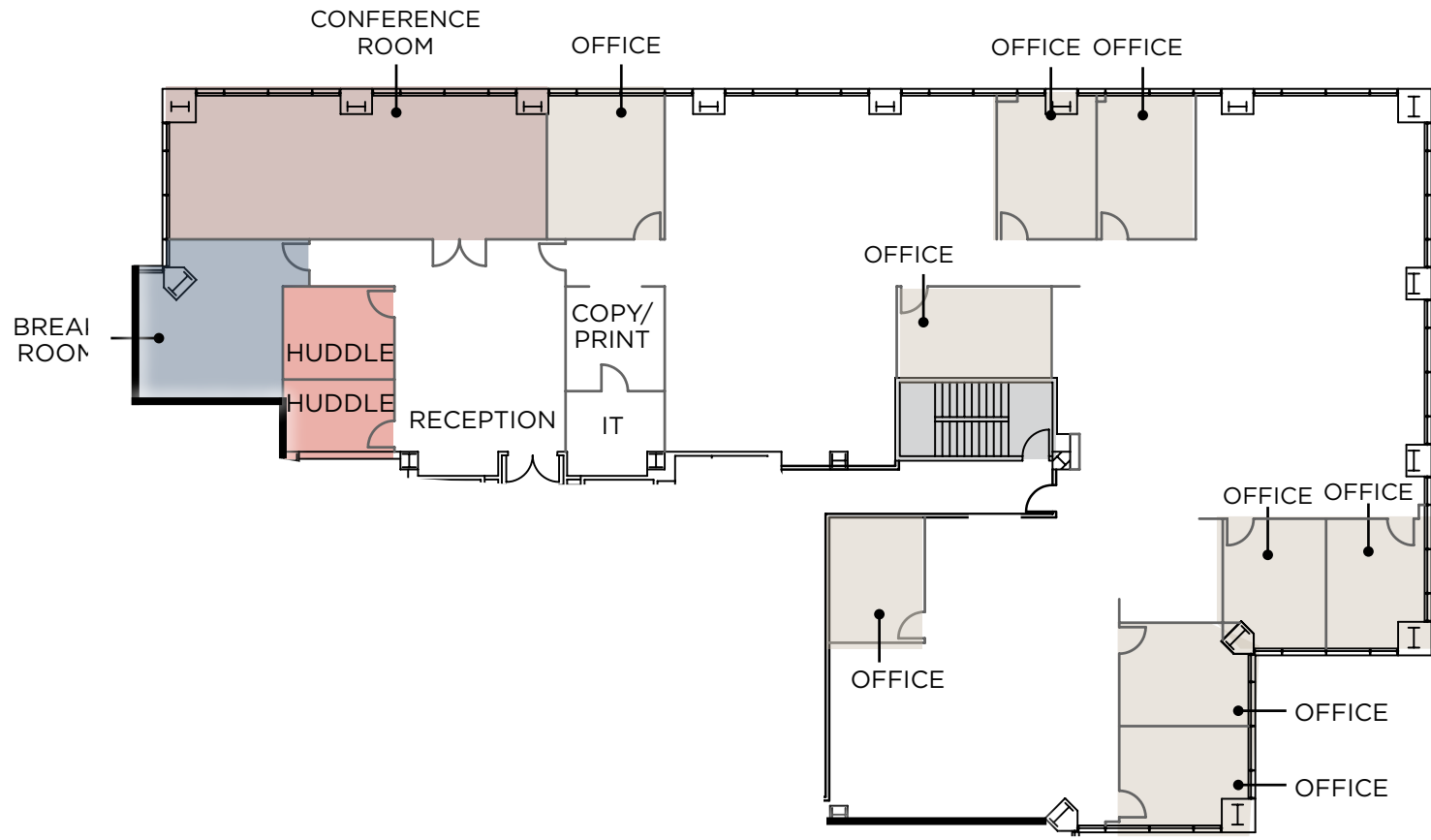
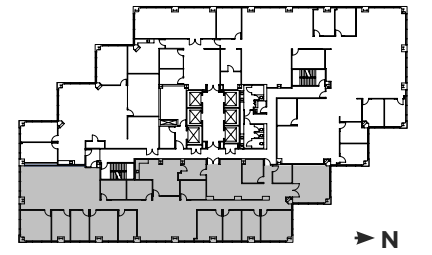
AS BUILT

SUITE 1100 - 9,685 RSF



AS BUILT - AVAILABLE OCTOBER 2026

SUITE 1150 - 7,560 RSF

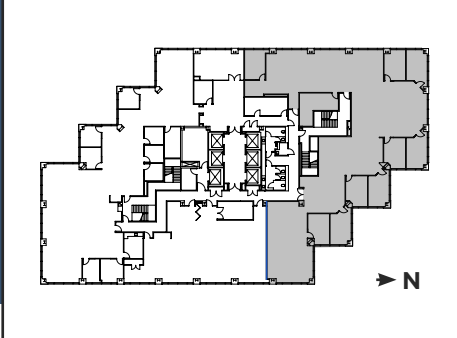


- 9 PRIVATE OFFICES
- 1 CONFERENCE ROOM
- 1 BREAK AREA
- 2 HUDDLE ROOMS

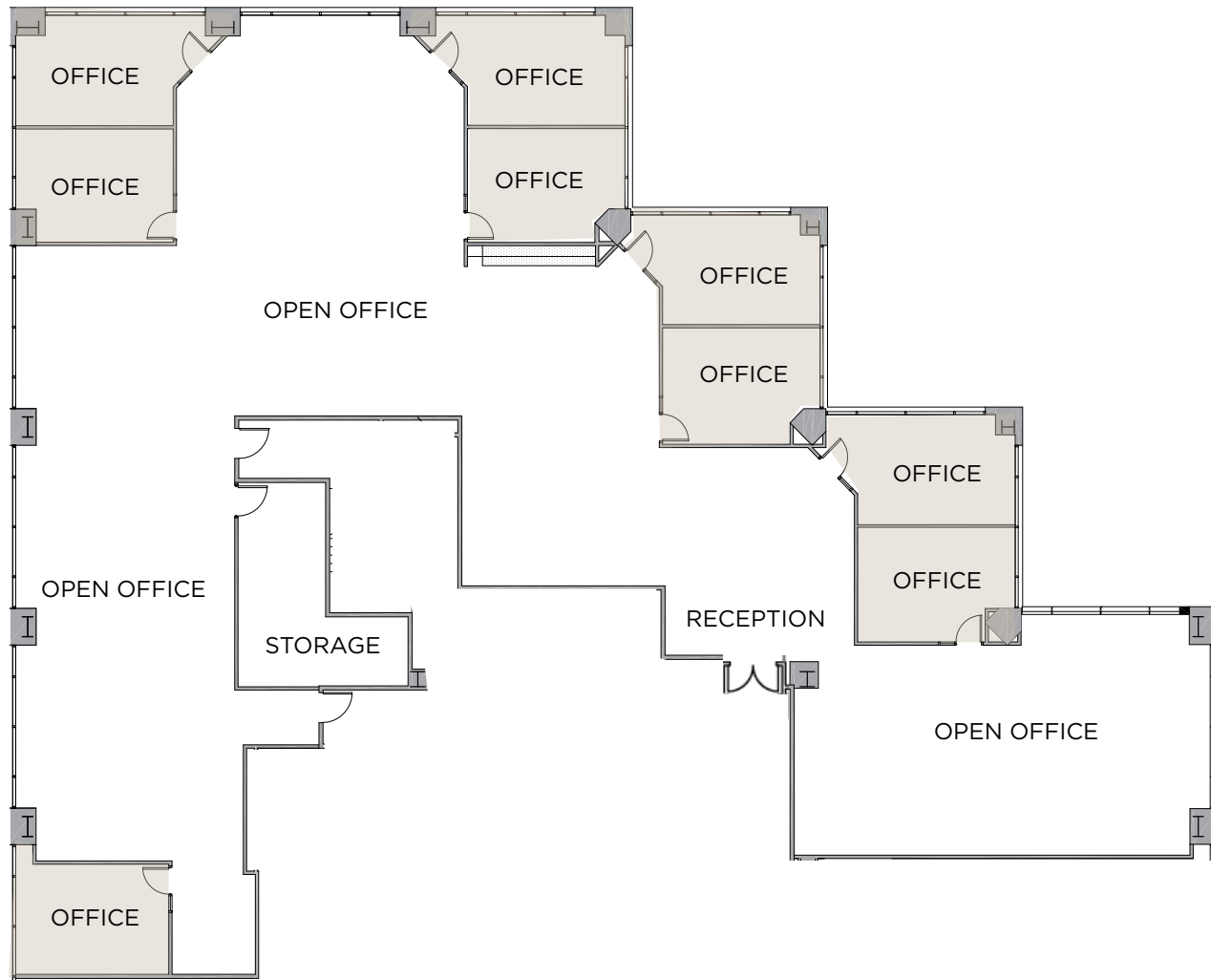
- 12 PRIVATE OFFICES
- 2 CONFERENCE ROOMS
- 1 BREAK AREA

AS BUILT

SUITE 1360 - 8,411 RSF

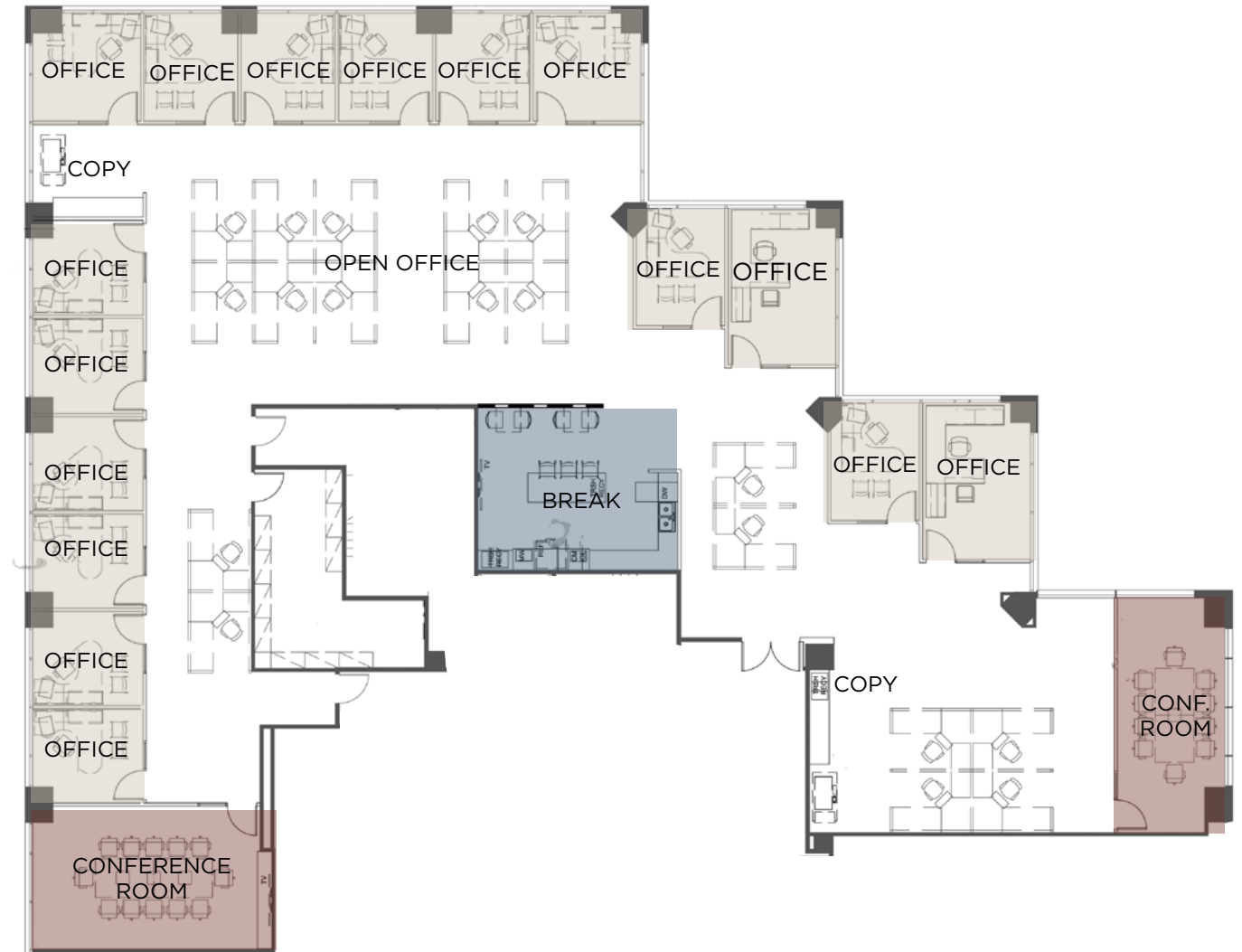


[VIEW TOUR](#)



HYPOTHETICAL SPEC SUITE

SUITE 1360 - 8,411 RSF

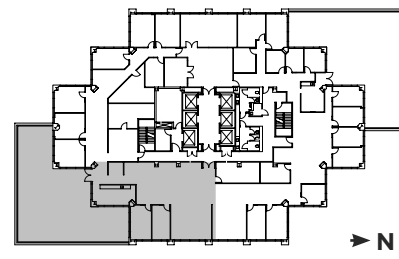


18 APPROX. CUBES IN OPEN OFFICE

- 16 PRIVATE OFFICES
- 2 CONFERENCE ROOM
- 1 BREAK AREA

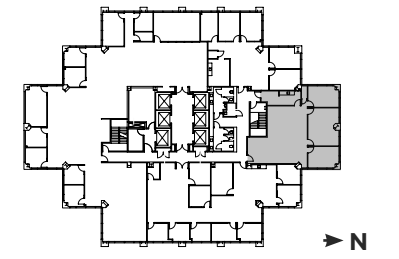
PLANNED SPEC SUITE - AVAILABLE SEPTEMBER 2026

SUITE 1450 - 2,533 RSF



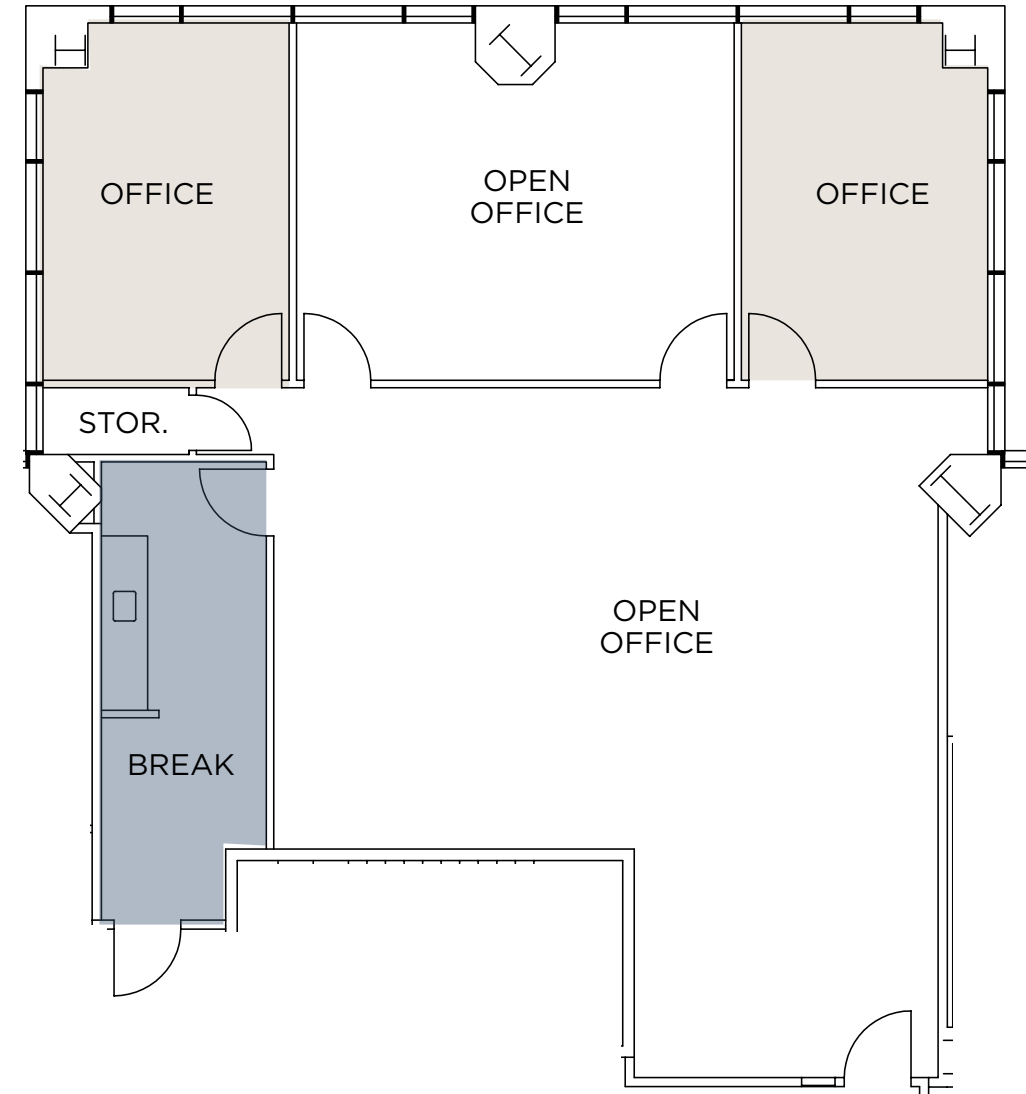
AS BUILT

SUITE 1540 - 2,062 RSF



[VIEW TOUR](#)

APPROX. 2,000 SF PRIVATE ROOFTOP TERRACE



- 3 PRIVATE OFFICES
- 1 CONFERENCE ROOM
- 1 BREAK AREA
- 2K SF ROOFTOP TERRACE

- 2 PRIVATE OFFICES
- 1 BREAK AREA



HAZARD CENTER

MIKE NOVKOV

+1 858 546 5412

mike.novkov@cushwake.com

LIC #01890388

DEREK HULSE

+1 858 334 4005

derek.hulse@cushwake.com

LIC #01740180

