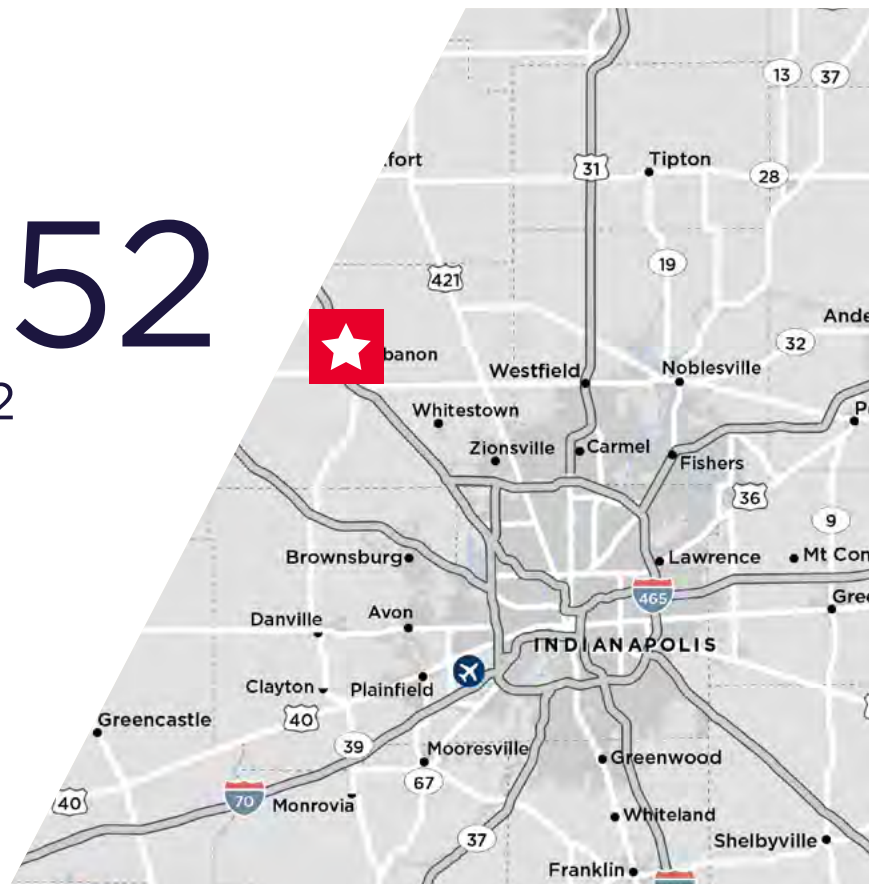


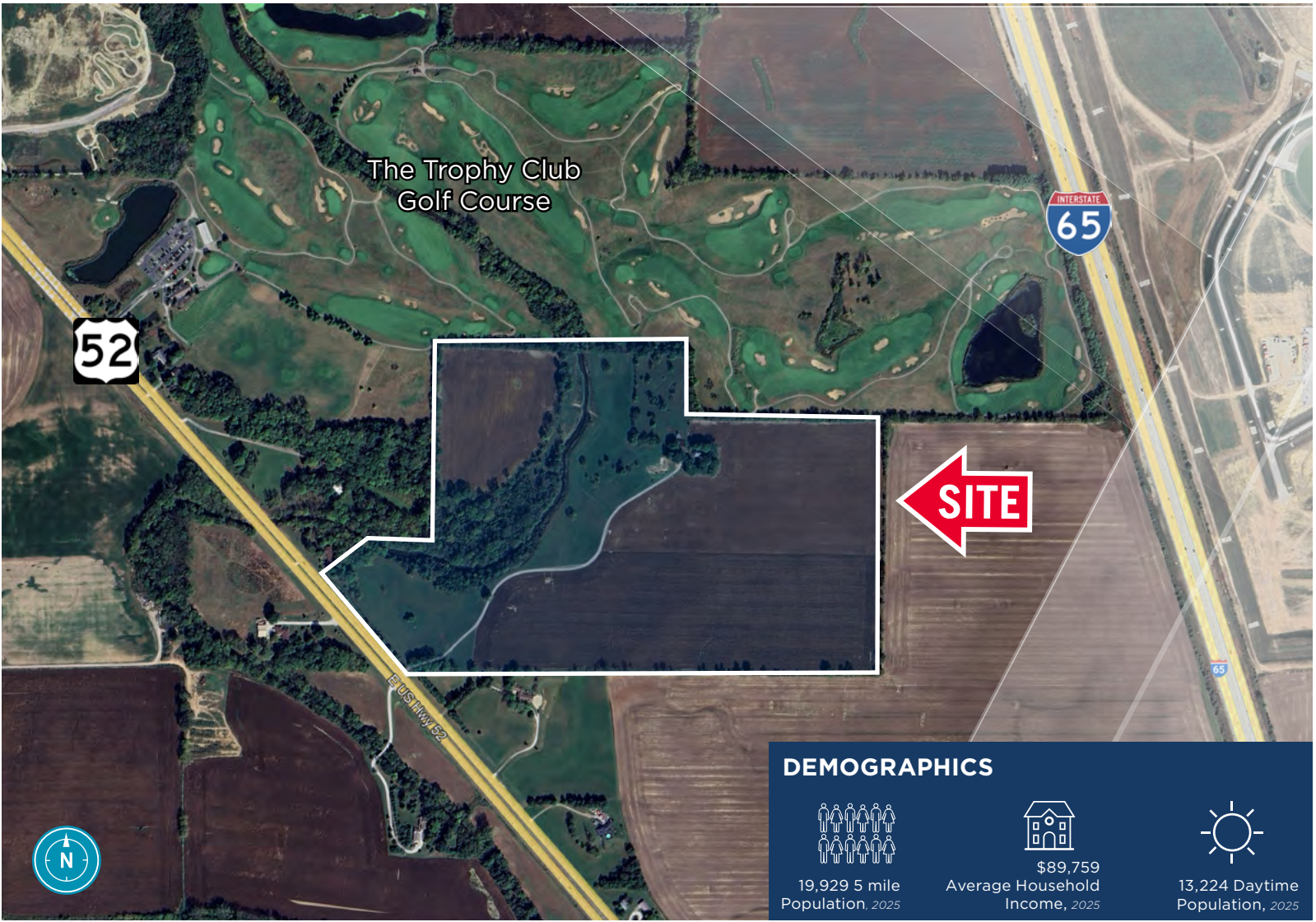
±91.31 Acres

3505

N US 52

Lebanon, IN 46052

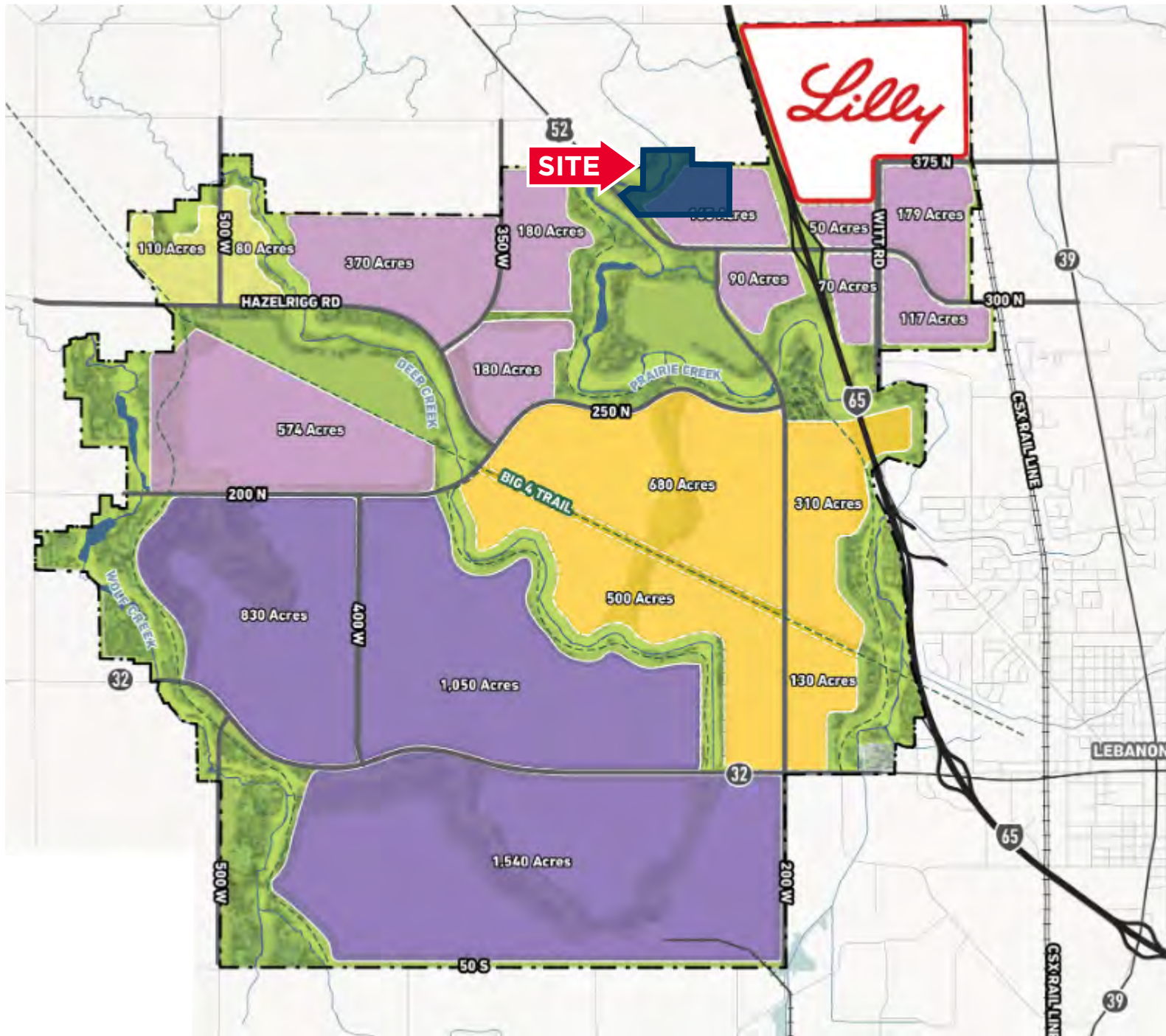




PROPERTY HIGHLIGHTS

3505 N US 52
Lebanon, IN 46052

- ±91.31 acres
- Zoned R-1 Direct access to new I-65 interchange under construction now.
- Close proximity to Eli Lilly's \$9 billion new manufacturing plants.
- Just north of the [LEAP District](#)
- Overlooks The Trophy Club Golf Course
- New power lines are planned to be brought to the property
- City utilities will be brought to the area as part of the LEAP District



LEAP DISTRICT LAND USE

- Advanced Manufacturing
- Mega Site Development
- Mixed-Use/Village Center
- Potential Renewable/Green Energy

Bo Leffel
+1 317 639 0441
bo.leffel@cushwake.com

One American Square
Suite 1800
Indianapolis, IN 46282
+1 317 639 0504



©2025 Cushman & Wakefield. All rights reserved. The information contained in this communication is strictly confidential. This information has been obtained from sources believed to be reliable but has not been verified. NO WARRANTY OR REPRESENTATION, EXPRESS OR IMPLIED, IS MADE AS TO THE CONDITION OF THE PROPERTY (OR PROPERTIES) REFERENCED HEREIN OR AS TO THE ACCURACY OR COMPLETENESS OF THE INFORMATION CONTAINED HEREIN, AND SAME IS SUBMITTED SUBJECT TO ERRORS, OMISSIONS, CHANGE OF PRICE, RENTAL OR OTHER CONDITIONS, WITHDRAWAL WITHOUT NOTICE, AND TO ANY SPECIAL LISTING CONDITIONS IMPOSED BY THE PROPERTY OWNER(S). ANY PROJECTIONS, OPINIONS OR ESTIMATES ARE SUBJECT TO UNCERTAINTY AND DO NOT SIGNIFY CURRENT OR FUTURE PROPERTY PERFORMANCE.