

# 71,870 SF Heavy Crane Building

**For Lease** | 9000 Brookpark Road, Cleveland, Ohio 44129



**CUSHMAN &  
WAKEFIELD**

**CRESCO**  
Real Estate

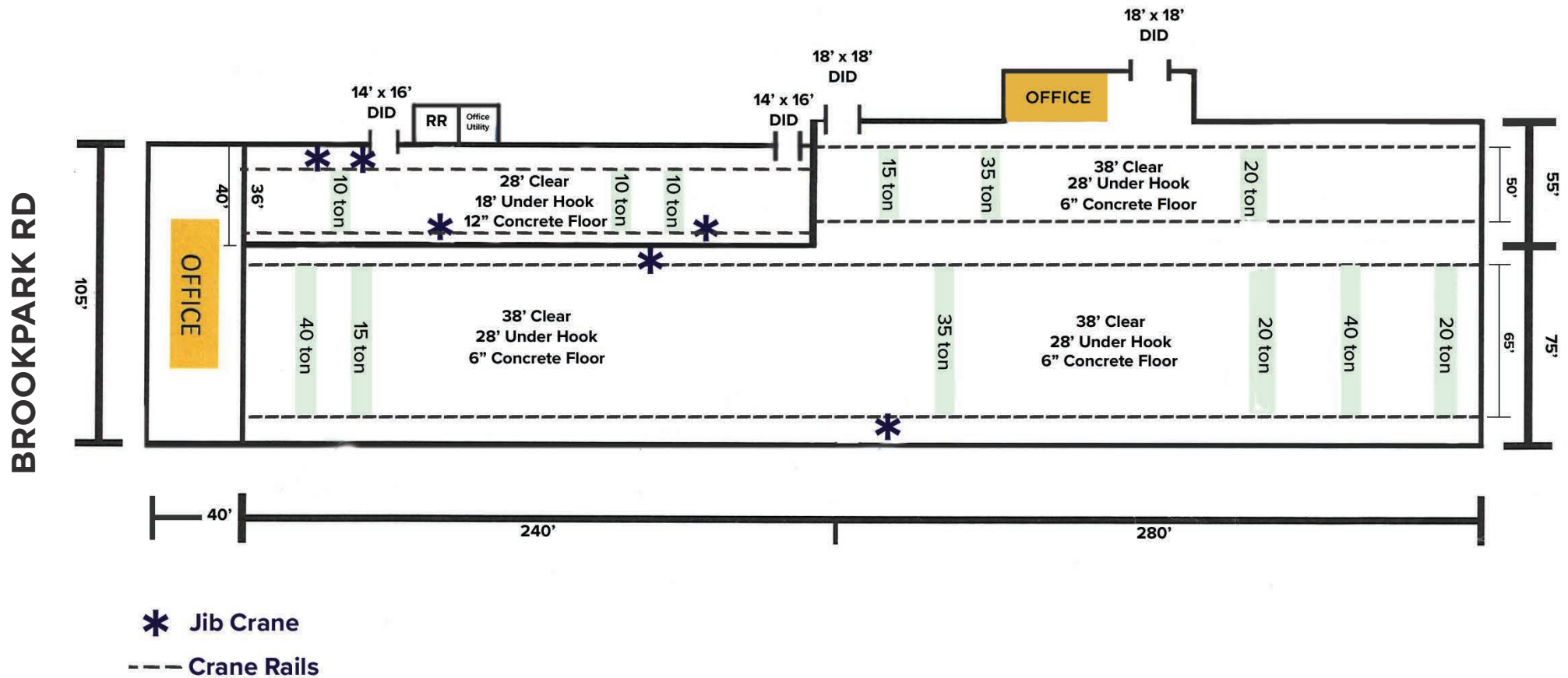


# 9000 Brookpark Road

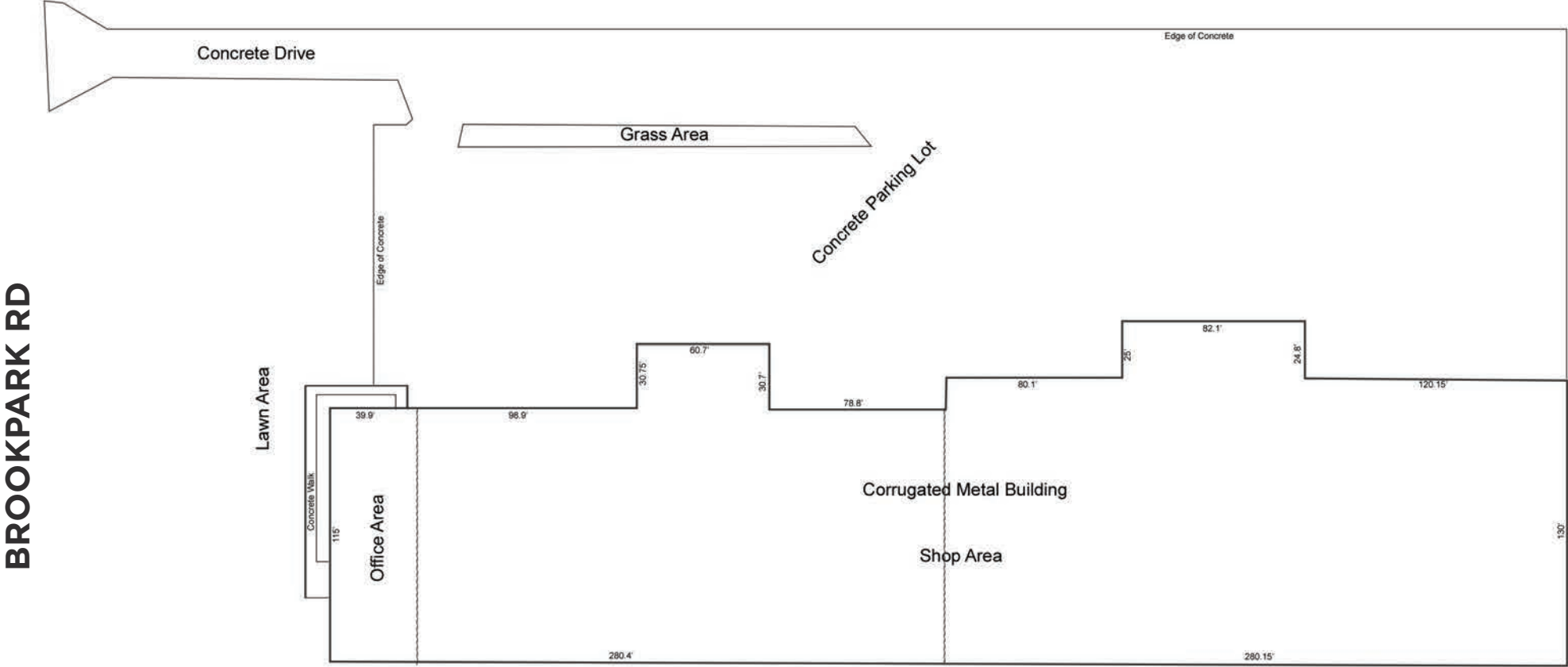
<b>Year Built:</b>	1978-1991
<b>Total Building:</b>	71,870 SF
<b>Industrial:</b>	67,600 SF
<b>Office:</b>	4,270 SF
<b>Land Size:</b>	6.97 AC
<b>Parking:</b>	50 Spaces & Truck Parking
<b>Clear Height:</b>	From 28'-38' Clear
<b>DID &amp; Dimensions:</b>	Two (2) 14'x16' Two (2) 18'x18'
<b>Floor:</b>	6"-12" Concrete
<b>Lighting:</b>	LED
<b>A/C:</b>	Office
<b>Heat:</b>	Radiant Tube
<b>Sprinkler:</b>	Wet
<b>Cranes &amp; Capacity:</b>	Three (3) - 10T Two (2) - 15T Three (3) - 20T Two (2) - 35T Two (2) - 40T Multiple JIB Cranes

**Lease Rate: \$6.95/SF NNN**



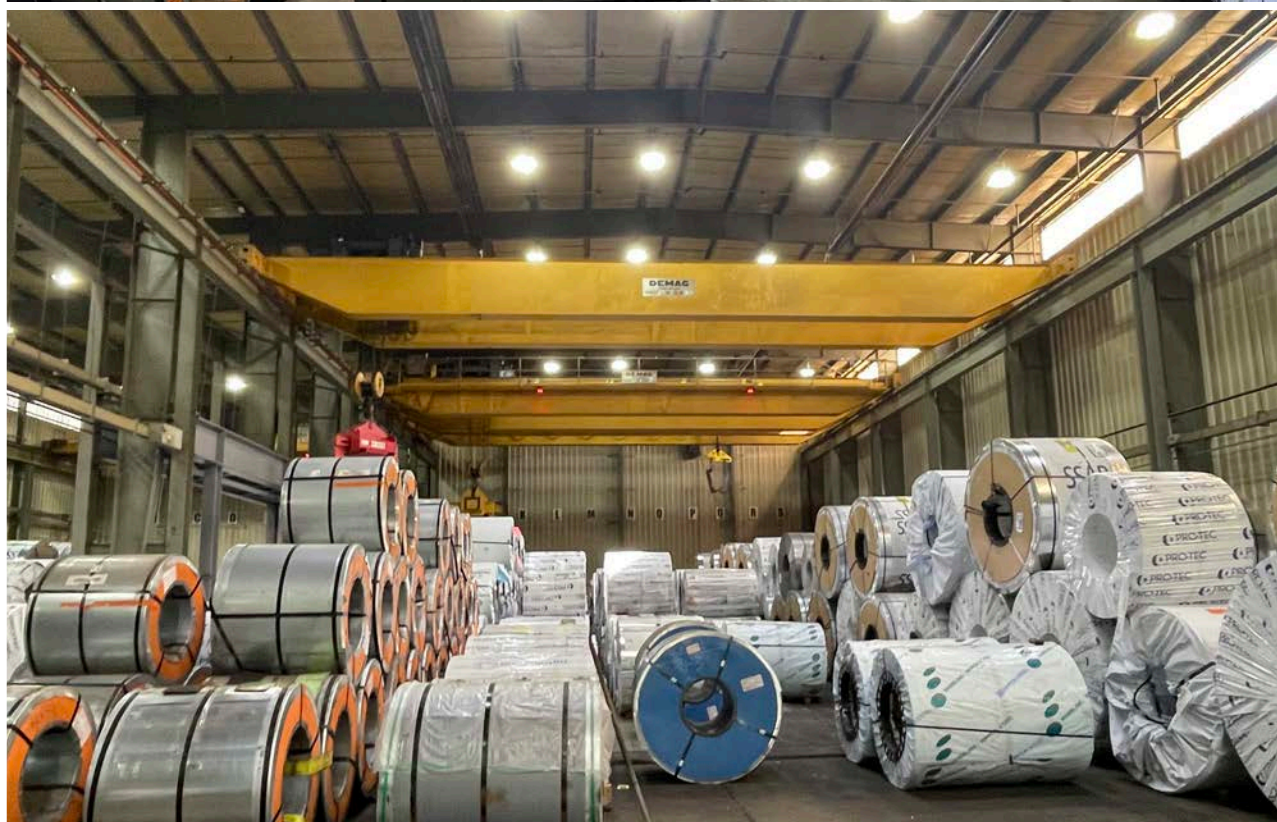


# Site Plan

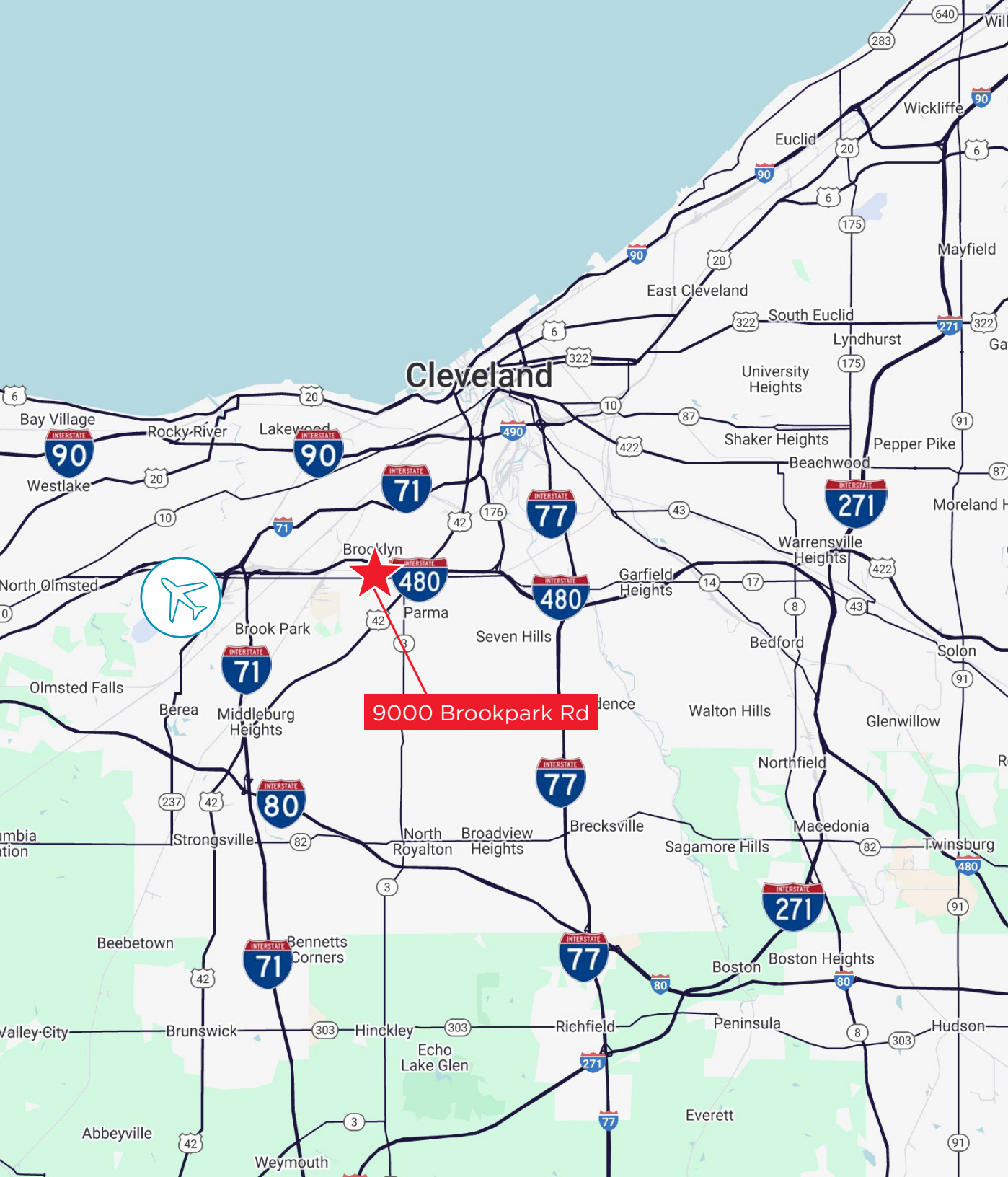




# Photos







## 9000 BROOKPARK ROAD CLEVELAND, OHIO 44129

**MATTHEW E. BEESLEY**

Executive Vice President & Partner Emeritus

[mbeesley@crescorealestate.com](mailto:mbeesley@crescorealestate.com)

+1 216 525 1466



**Cushman & Wakefield | CRESCO Real Estate**  
6100 Rockside Woods Blvd, Suite 200  
Cleveland, Ohio 44131

[crescorealestate.com](http://crescorealestate.com)

©2025 Cushman & Wakefield. All rights reserved. The information contained in this communication is strictly confidential. This information has been obtained from sources believed to be reliable but has not been verified. NO WARRANTY OR REPRESENTATION, EXPRESS OR IMPLIED, IS MADE AS TO THE CONDITION OF THE PROPERTY (OR PROPERTIES) REFERENCED HEREIN OR AS TO THE ACCURACY OR COMPLETENESS OF THE INFORMATION CONTAINED HEREIN, AND SAME IS SUBMITTED SUBJECT TO ERRORS, OMISSIONS, CHANGE OF PRICE, RENTAL OR OTHER CONDITIONS, WITHDRAWAL WITHOUT NOTICE, AND TO ANY SPECIAL LISTING CONDITIONS IMPOSED BY THE PROPERTY OWNER(S). ANY PROJECTIONS, OPINIONS OR ESTIMATES ARE SUBJECT TO UNCERTAINTY AND DO NOT SIGNIFY CURRENT OR FUTURE PROPERTY PERFORMANCE.