

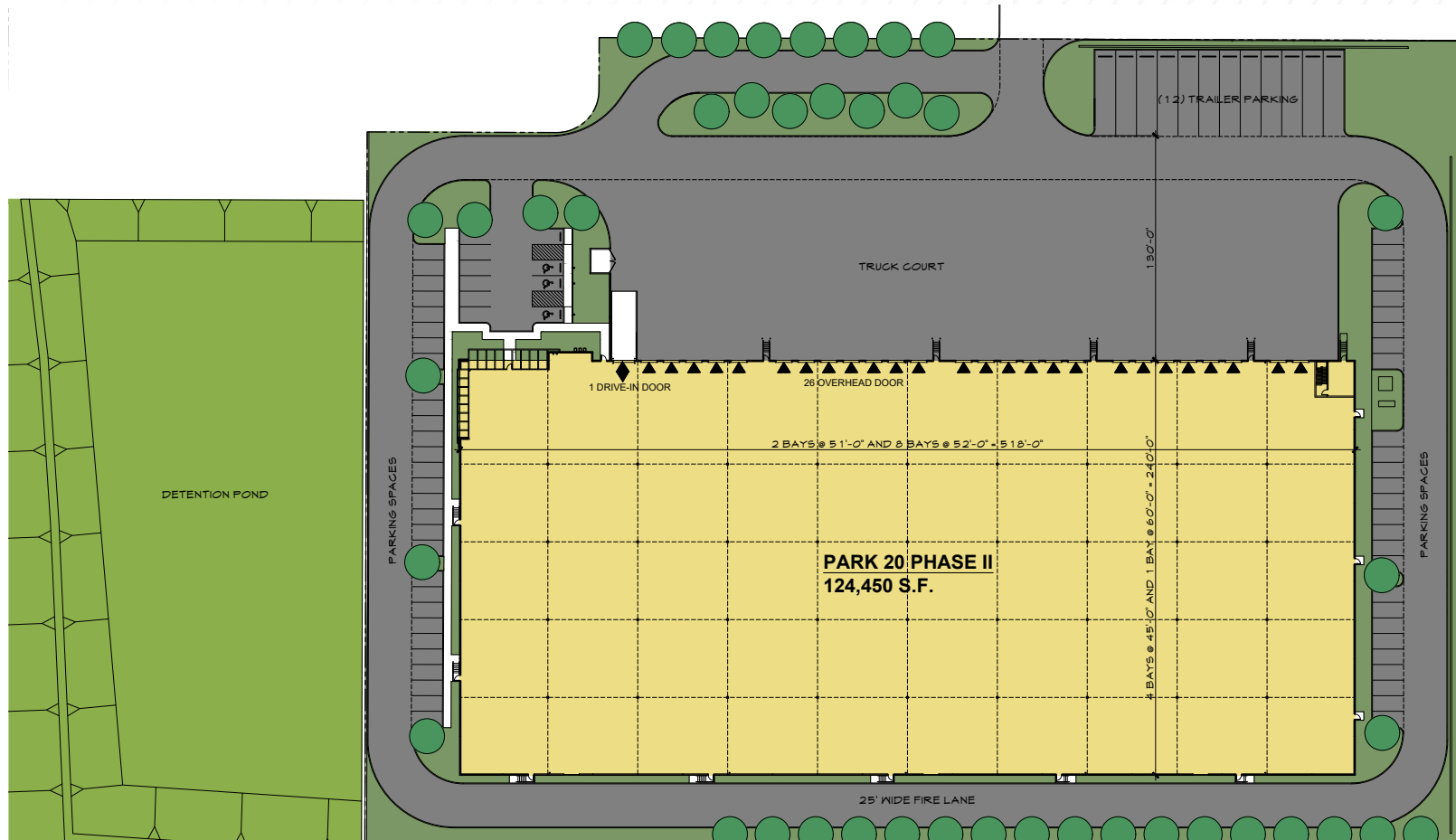
124,450 SF | CLASS A INDUSTRIAL

PARK 20 II LOGISTICS PARK

3115 N Houston School Road, Lancaster, TX 75134

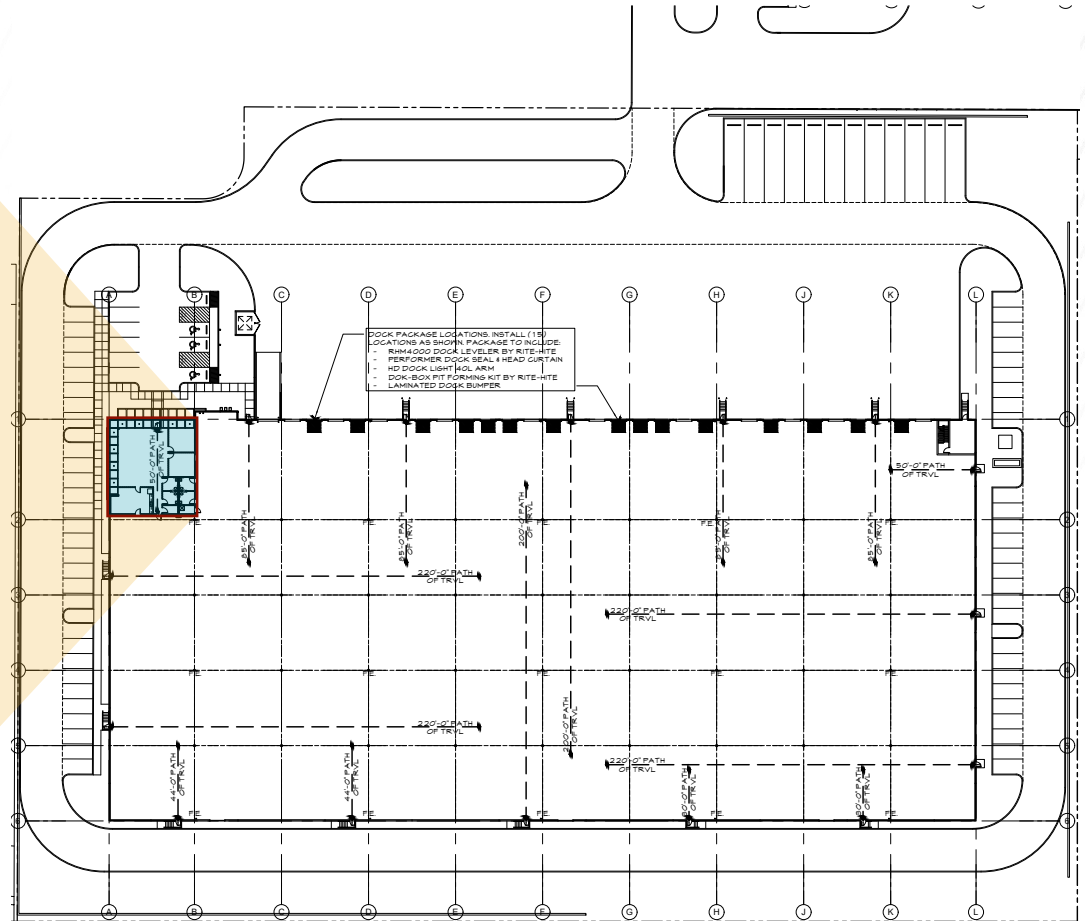
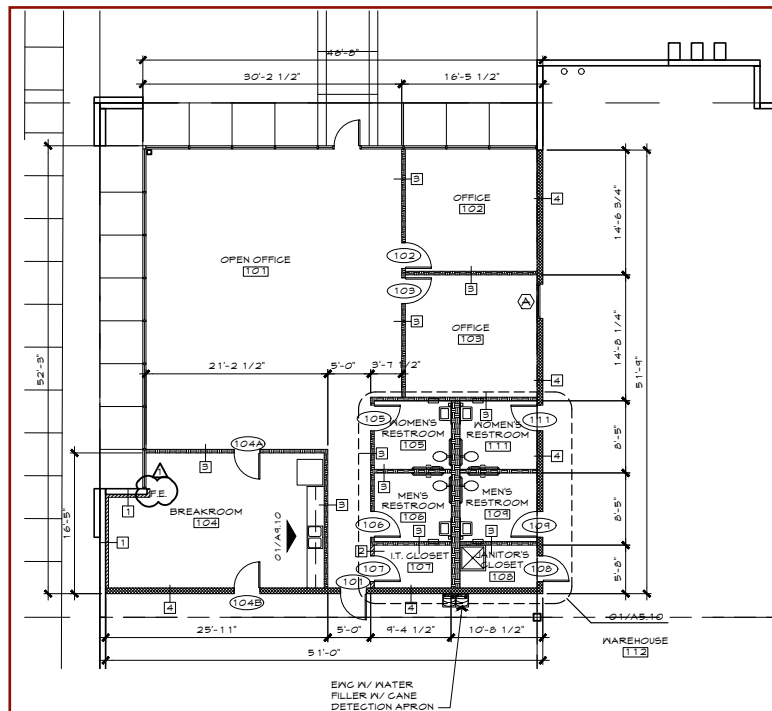


BUILDING FEATURES



Building Size:	124,450 SF	Spec Office:	2,500 SF
Acreage:	6.89 Acres	Trailer Parking:	12
Clear Height:	32'	Auto Parking:	67
Building Depth:	240'	Fire Protection:	ESFR
Dock Doors:	26	Slab Thickness:	6" Thick / 4,000 PSI
Drive-In Doors:	1	Lighting:	LED
Site Features:	Fully Fenced and Secured Site	Power:	2,000 Amps/480V/3Phase

SPEC OFFICE PLAN



ACCESS MAP



60,838,672 Consumers
within 1-Day Drive



Minutes from
Downtown Dallas



Modern Construction

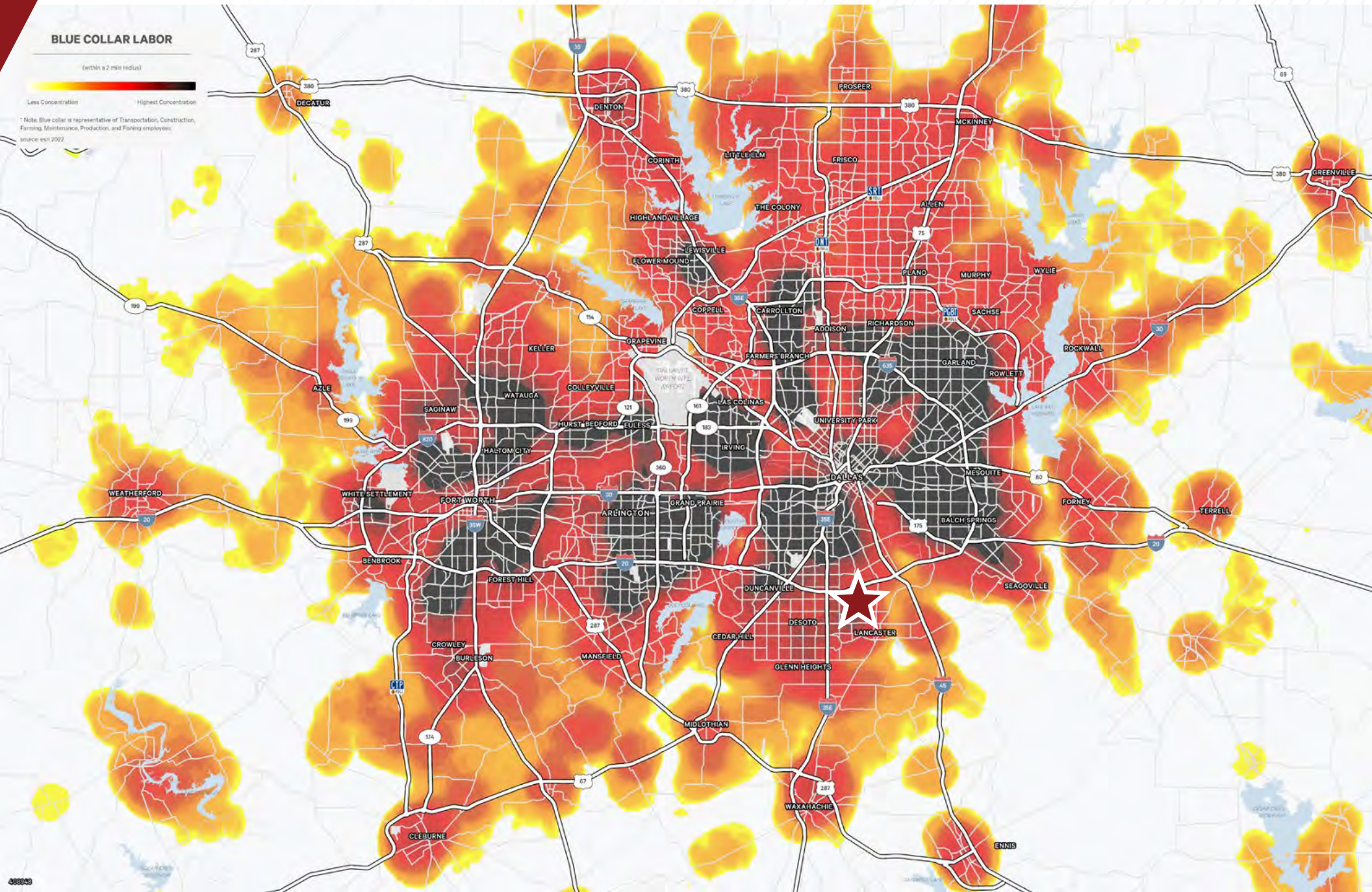


Deep Labor Pool

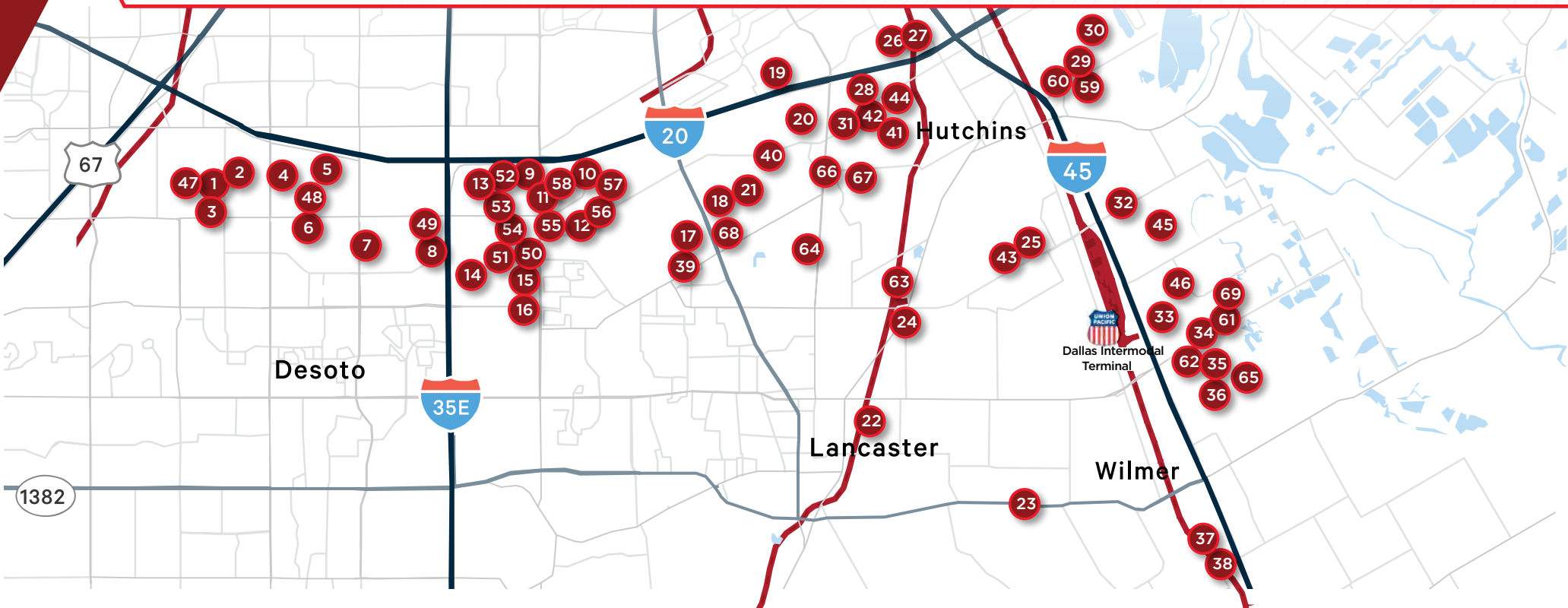


Convenient Intermodal/
Interstate Access

LABOR HEAT MAP



TENANT MAP



SOUTH DALLAS TENANTS



FOR MORE INFORMATION, PLEASE CONTACT:

John Brewer

Managing Director

+1 214 680 9415

john.brewer@cushwake.com

Riley Maxwell

Senior Director

+1 214 676 3235

riley.maxwell@cushwake.com



©2025 Cushman & Wakefield. All rights reserved. The information contained in this communication is strictly confidential. This information has been obtained from sources believed to be reliable but has not been verified. No warranty or representation, express or implied, is made as to the condition of the property (or properties) referenced herein or as to the accuracy or completeness of the information contained herein, and same is submitted subject to errors, omissions, change of price, rental or other conditions, withdrawal without notice, and to any special listing conditions imposed by the property owner(s). Any projections, opinions or estimates are subject to uncertainty and do not signify current or future property performance.

