

FOR SUBLEASE

## 855 MORSE AVENUE

ELK GROVE VILLAGE, IL 60007



**91,539 SF AVAILABLE FOR  
SUBLEASE**

Sublease through August 2030

**\$6.00 PSF  
GROSS**



# PROPERTY FEATURES



**91,539 SF**

TOTAL BUILDING SIZE

**1965**

YEAR BUILT

**2**

DRIVE-IN DOORS

**80 SPOTS**

PARKING

**10,500 SF**

OFFICE SIZE

**19'**

CLEAR HEIGHT

**POTENTIAL**

RAIL

**\$6.00 PSF GROSS**

LEASE RATE

**4 ACRES**

LAND SIZE

**6 INTERIOR DOCKS**

LOADING

**2000-3000A /480 V**

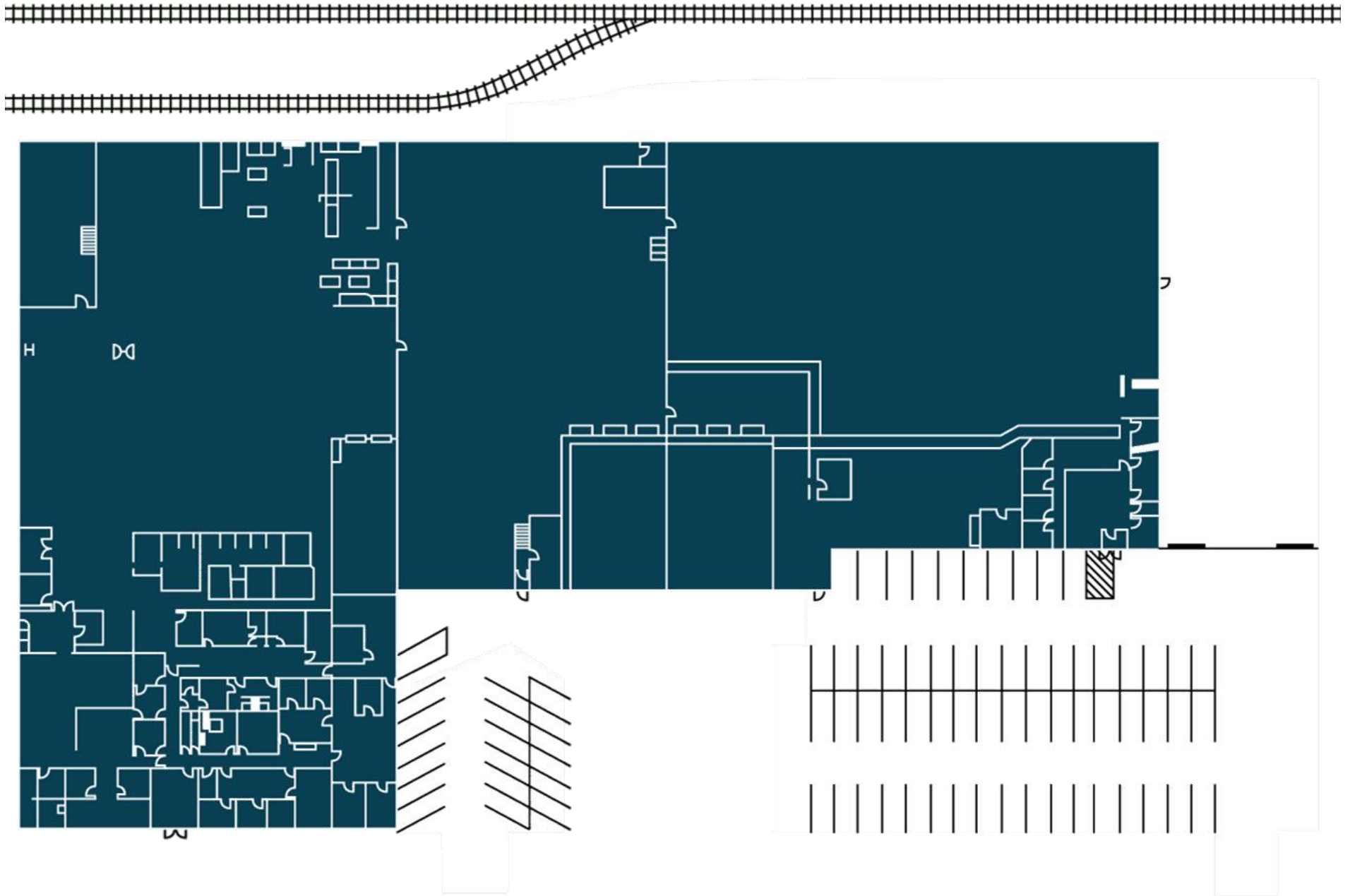
POWER

**WET**

SPRINKLERS

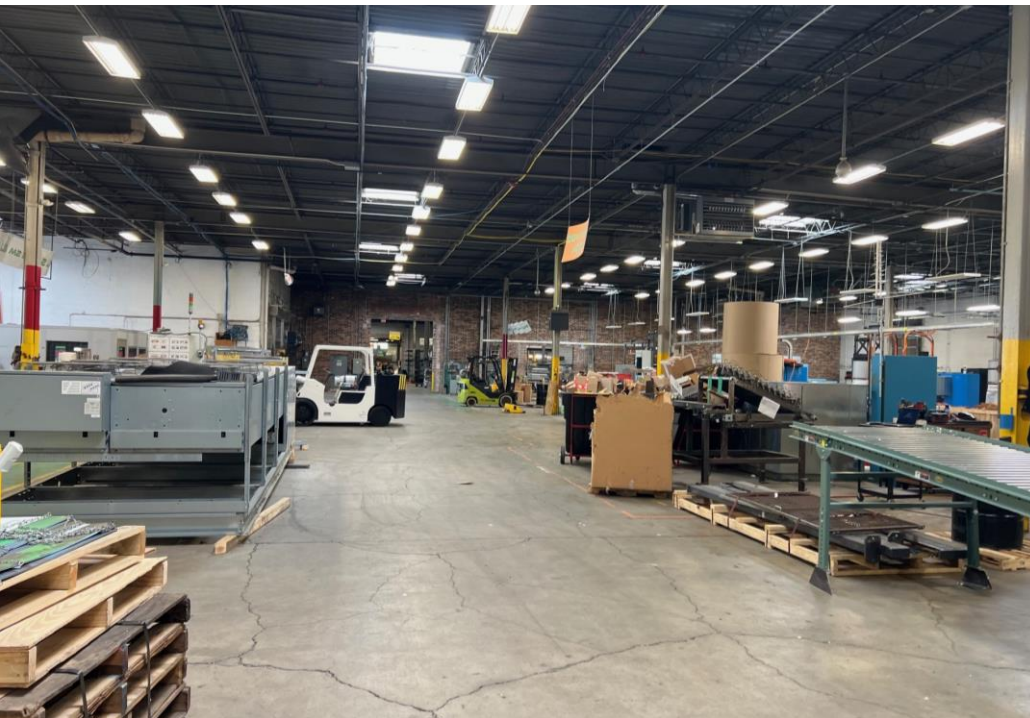
- Fenced lot
- Close proximity to I-290, I-90 and O'Hare Airport
- Sublease through 8/31/2030

# PROPERTY SITE PLAN





# PROPERTY PHOTOGRAPHY





**Al Caruana**

Executive Managing Director  
+1 847 720 1326  
al.caruana@cushwake.com

**Phil Reiff**

Managing Director  
+1 630 697 7397  
phil.reiff@cushwake.com

**Jeff Matella**

Director  
+1 847 720 1349  
Jeff.matella@cushwake.com

**David Friedland**

Executive Managing Director  
+1 630 841 2001  
david.friedland@cushwake.com