

# 2081

ARENA BLVD  
SACRAMENTO, CALIFORNIA

±3,719 RSF - ±5,209 RSF AVAILABLE

## PROPERTY HIGHLIGHTS

SUITE 100 5,209 RSF

SUITE 200 3,719 RSF

- 24,000 SF 2-story Class A office building built in 2007
- Mixed use development with on-site restaurants and shopping
- Easy ingress and egress with immediate access to Interstate 5 and Interstate 80
- Close proximity to Downtown Sacramento, State Capitol and Sacramento International Airport

## CONTACT INFORMATION

### CHRIS SCHWARZE

EXECUTIVE DIRECTOR

916.288.4803

chris.schwarze@cushwake.com

CA License #01291261

### CHAD COOK, MCR, SIOR, CCIM

SENIOR DIRECTOR

916.329.1562

chad.cook@cushwake.com

CA License #01711687

### KEVIN PARTINGTON

EXECUTIVE DIRECTOR

916.288.4807

kevin.partington@cushwake.com

CA License #01199010

### CUSHMAN & WAKEFIELD INC.

400 Capitol Mall, Suite 1800,

Sacramento, CA 95814

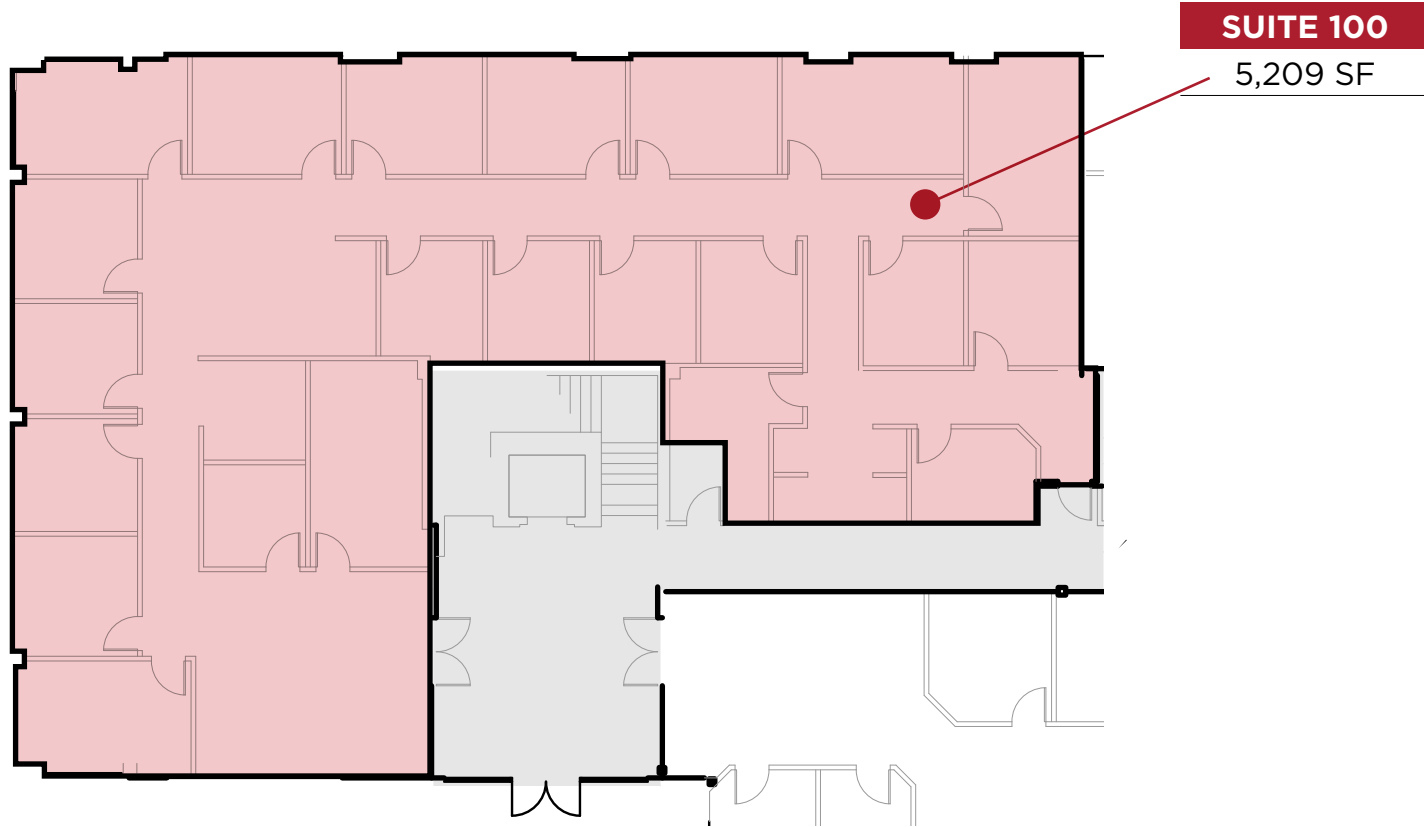
916.288.4800

LIC. #0061633

# 2081

**ARENA BLVD**  
SACRAMENTO, CALIFORNIA

## FLOOR PLANS 1<sup>st</sup>FLOOR



### CONTACT INFORMATION

**CHRIS SCHWARZE**  
EXECUTIVE DIRECTOR  
916.288.4803  
chris.schwarze@cushwake.com  
CA License #01291261

**CHAD COOK, MCR, SIOR, CCIM**  
SENIOR DIRECTOR  
916.329.1562  
chad.cook@cushwake.com  
CA License #01711687

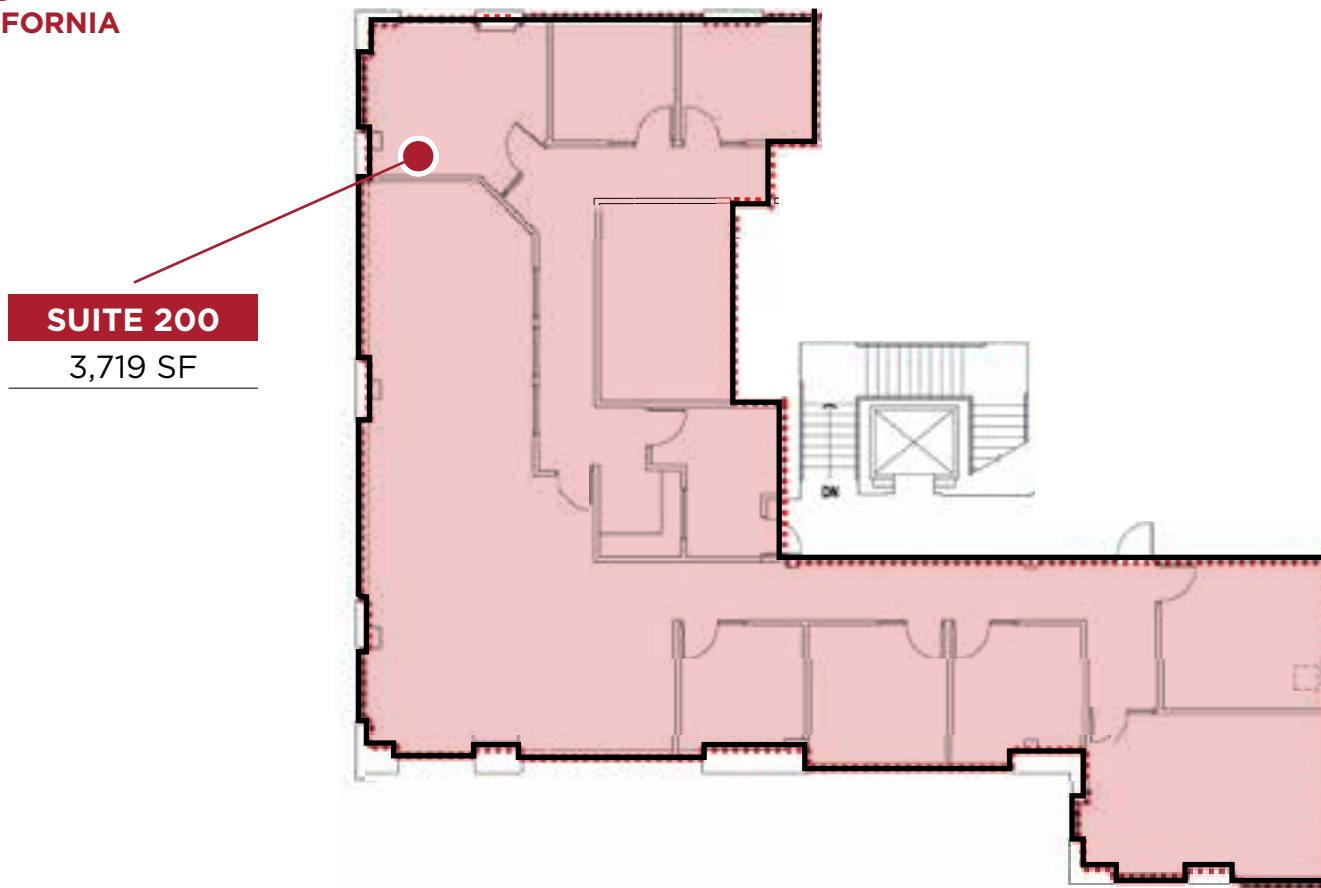
**KEVIN PARTINGTON**  
EXECUTIVE DIRECTOR  
916.288.4807  
kevin.partington@cushwake.com  
CA License #01199010

**CUSHMAN & WAKEFIELD INC.**  
400 Capitol Mall, Suite 1800,  
Sacramento, CA 95814  
916.288.4800  
LIC. #0061633

# 2081

**ARENA BLVD**  
SACRAMENTO, CALIFORNIA

FLOOR PLANS  
2<sup>nd</sup> FLOOR



## CONTACT INFORMATION

**CHRIS SCHWARZE**

EXECUTIVE DIRECTOR

916.288.4803

chris.schwarze@cushwake.com

CA License #01291261

**CHAD COOK, MCR, SIOR, CCIM**

SENIOR DIRECTOR

916.329.1562

chad.cook@cushwake.com

CA License #01711687

**KEVIN PARTINGTON**

EXECUTIVE DIRECTOR

916.288.4807

kevin.partington@cushwake.com

CA License #01199010

**CUSHMAN & WAKEFIELD INC.**

400 Capitol Mall, Suite 1800,

Sacramento, CA 95814

916.288.4800

LIC. #0061633

# 2081

**ARENA BLVD  
SACRAMENTO, CALIFORNIA**

## GALLERY



## CONTACT INFORMATION

**CHRIS SCHWARZE**  
EXECUTIVE DIRECTOR

916.288.4803

chris.schwarze@cushwake.com

CA License #01291261

**CHAD COOK, MCR, SIOR, CCIM**  
SENIOR DIRECTOR

916.329.1562

chad.cook@cushwake.com

CA License #01711687

**KEVIN PARTINGTON**  
EXECUTIVE DIRECTOR

916.288.4807

kevin.partington@cushwake.com

CA License #01199010

**CUSHMAN & WAKEFIELD INC.**

400 Capitol Mall, Suite 1800,  
Sacramento, CA 95814

916.288.4800

LIC. #0061633

# 2081

## ARENA BLVD SACRAMENTO, CALIFORNIA

### • HEALTH & WELLNESS •

- 1) Fitness Evolution
- 2) Anytime Fitness
- 3) CA Family Fitness
- 4) Curves
- 5) Bikram Yoga Natomas
- 6) Orangetheory Fitness

### • PARKS •

- 1) North Natomas Regional Park
- 2) Kokomo Park
- 3) Quail Park
- 4) Linden Park
- 5) Sundance Park
- 6) Witter Ranch Park
- 7) Tanzanite Park

### • FOOD •

- 1) Peet's Coffee & tea
- 2) Jack's Urban Eats
- 3) Jamba Juice
- 4) Freebirds World Burrito
- 5) Corner Bakery Cafe
- 6) Curry Corner
- 7) Bella Bru Cafe
- 8) Tuk Tuk Thai Cuisine
- 9) Panera Bread
- 10) Pete's Restaurant and Brewhouse
- 11) Tapioca Express
- 12) Beach Hut Deli
- 13) Buffalo Wild Wings

### • HOTELS •

- 1) Homewood Suites by Hilton
- 2) Hampton Inn & Suites
- 3) Holiday Inn Express & Suites
- 4) Extended Stay America

### • BANKS •

- 1) Wells Fargo
- 2) Tri Counties Bank
- 3) Bank of America
- 4) Safe Credit Union
- 5) Chase

### • GAS STATIONS •

- 1) Shell
- 2) Chevron
- 3) Safeway

### • SCHOOLS •

- 1) Inderkum High School
- 2) American River College Natomas Center
- 3) Natomas School of Music



### • OTHER •

- 1) Raleys
- 2) Safeway
- 3) Natomas Veterinary Hospital
- 4) Cost Plus World Market
- 5) BevMo
- 6) Best Buy
- 7) Target
- 8) FedEx

## POINTS OF INTEREST

DOWNTOWN SACRAMENTO • GOLDEN 1 CENTER • RAILYARDS • RALEY FIELD • SLEEP TRAIN ARENA • SAC INTERNATIONAL AIRPORT • SPINE BIKE TRAIL • DISCOVERY PARK • OLD TOWN SACRAMENTO

## CONTACT INFORMATION

### CHRIS SCHWARZE

EXECUTIVE DIRECTOR

916.288.4803

chris.schwarze@cushwake.com

CA License #01291261

### CHAD COOK, MCR, SIOR, CCIM

SENIOR DIRECTOR

916.329.1562

chad.cook@cushwake.com

CA License #01711687

### KEVIN PARTINGTON

EXECUTIVE DIRECTOR

916.288.4807

kevin.partington@cushwake.com

CA License #01199010

### CUSHMAN & WAKEFIELD INC.

400 Capitol Mall, Suite 1800,

Sacramento, CA 95814

916.288.4800

LIC. #0061633