

FOR SALE

67,500 SF



1536 Bourbon Parkway

STREAMWOOD, ILLINOIS

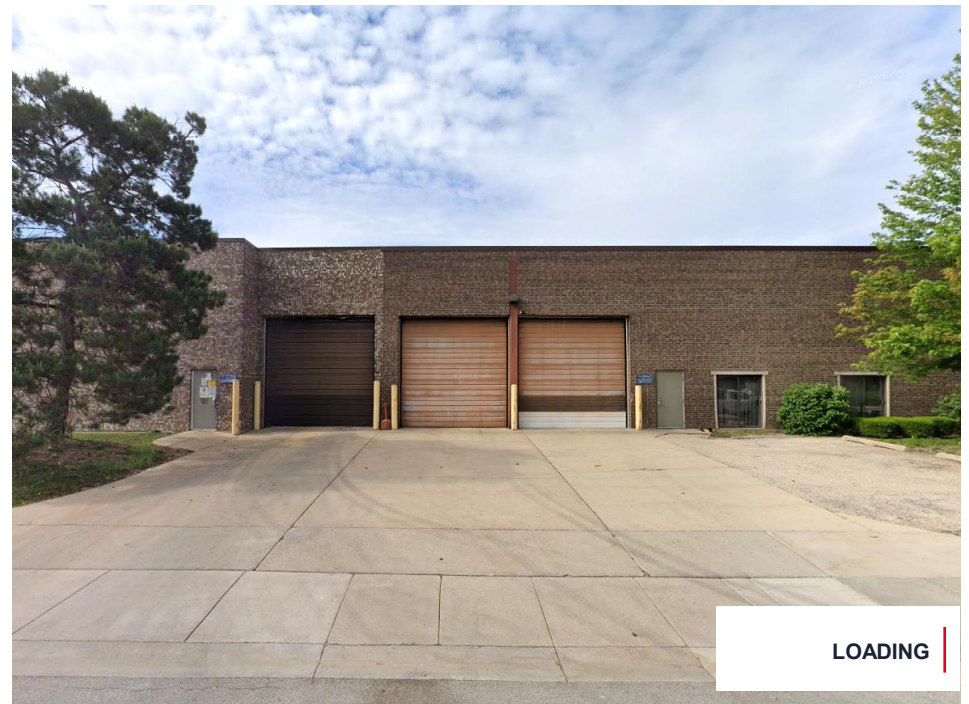
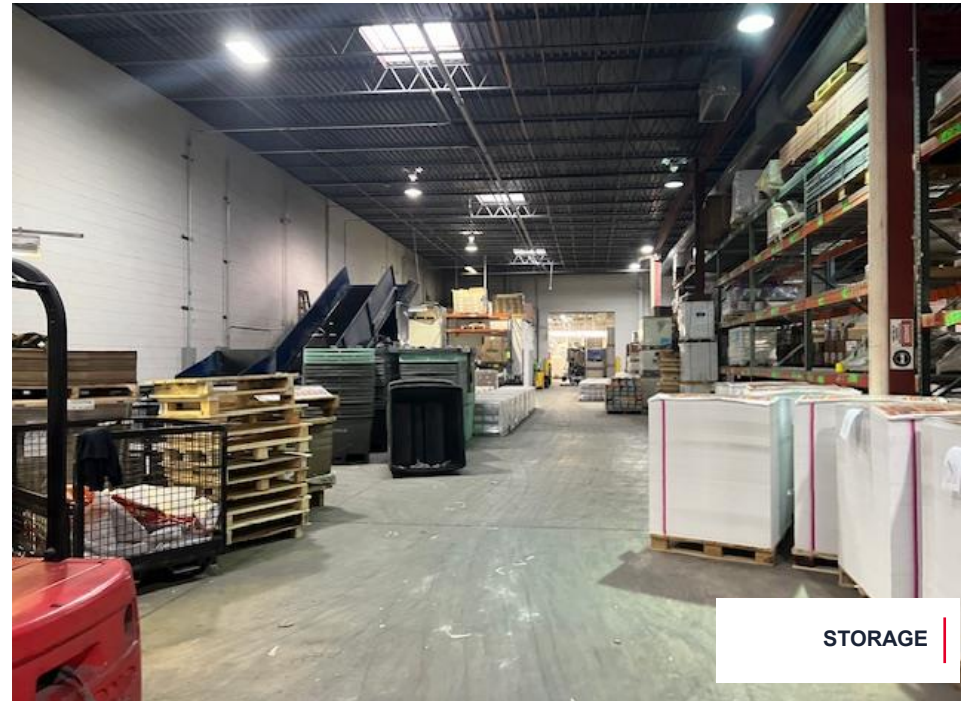
---

FULLY AIR CONDITIONED • HEAVY POWER



# PROPERTY HIGHLIGHTS

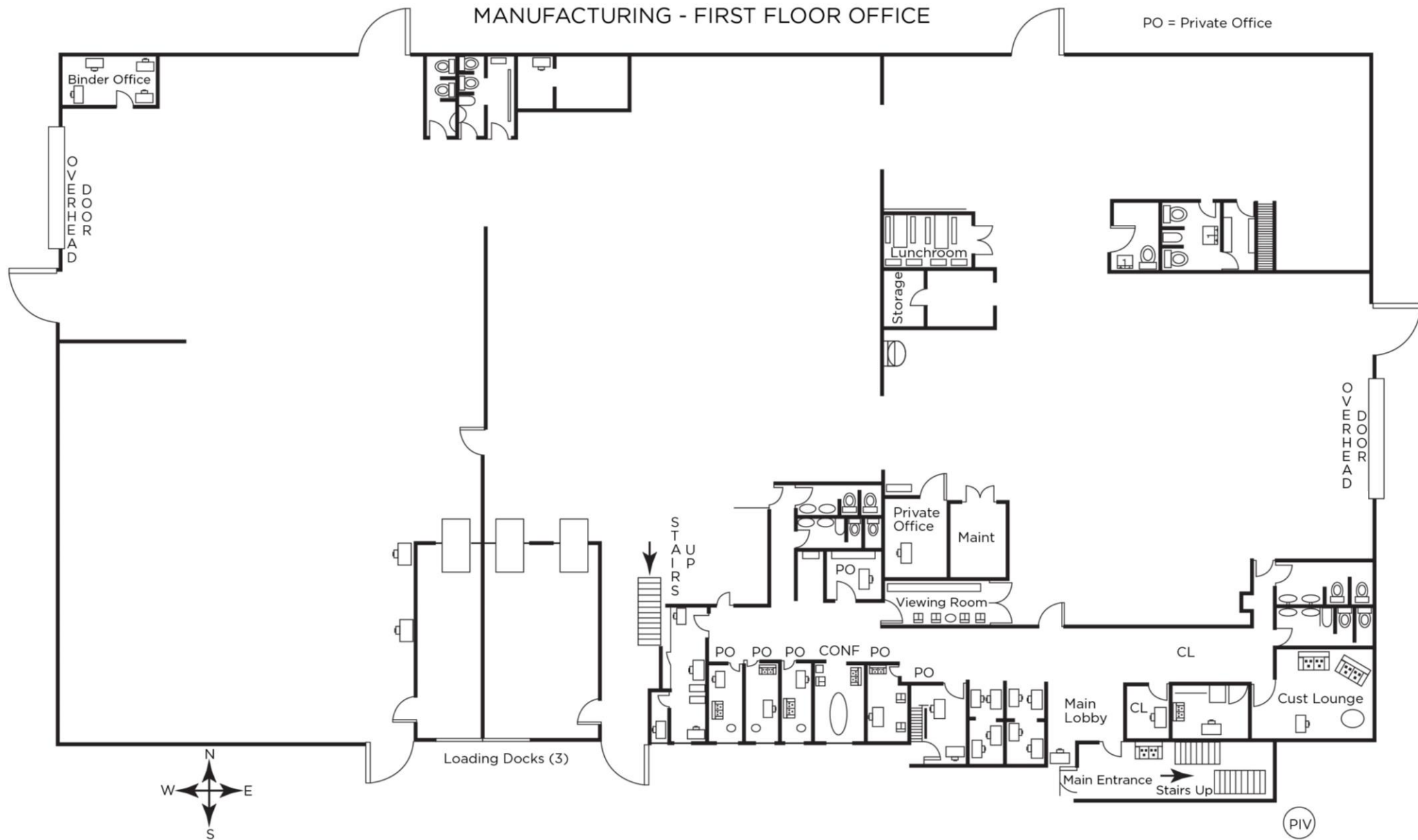
Building Size:	67,500 SF
Year Built:	1980, Renovated 1991
Office Area:	±10,000 SF (not including mezzanine office)
Site Area:	±2.65 Acres
Clear Height:	14' - 20'
Loading:	2 Drive-in-Doors (12x14   10x12) 3 Interior Docks
Parking:	70 cars
Zoning:	I-1 – Generalized Industrial District
Power:	2,000 Amps   480 Volts
Sprinkler:	Wet
Taxes:	(2023) \$1.95 PSF
Asking Price:	\$5,900,000 / \$87.41 PSF



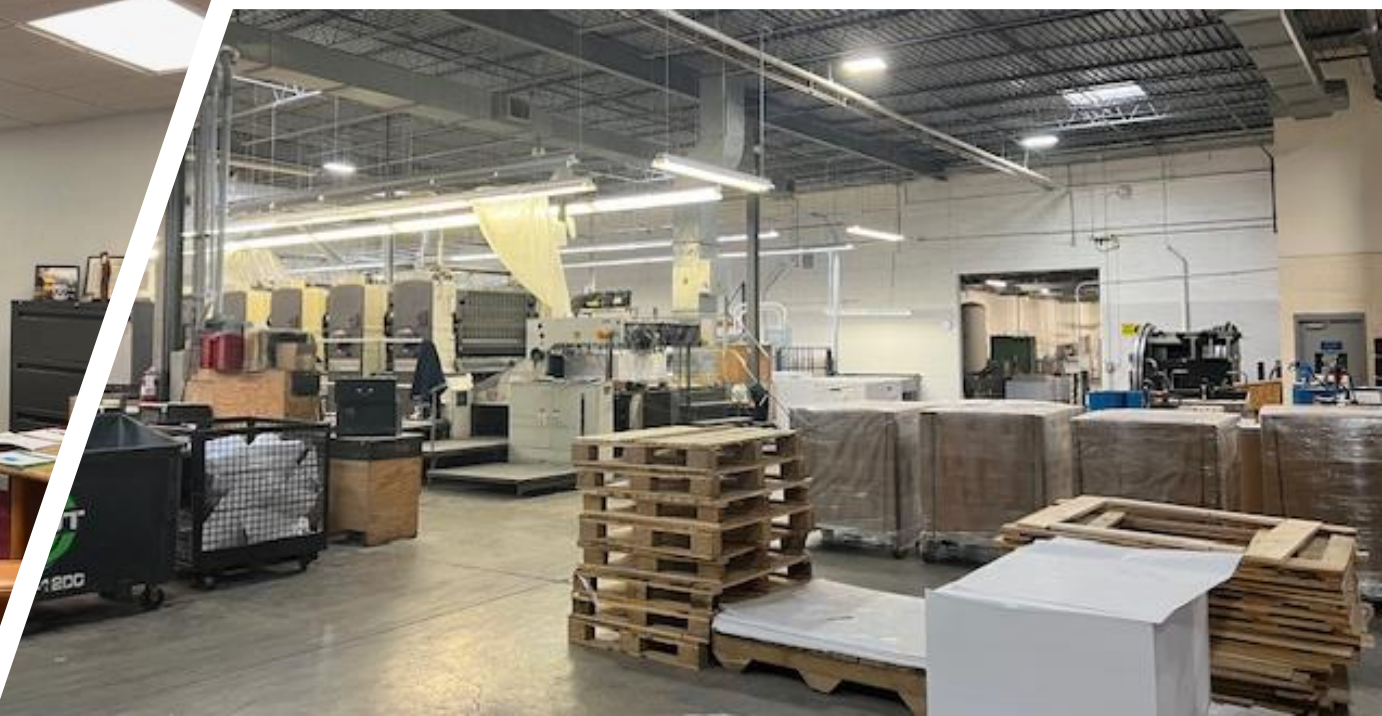
# SITE PLAN

## 2.65 ACRES

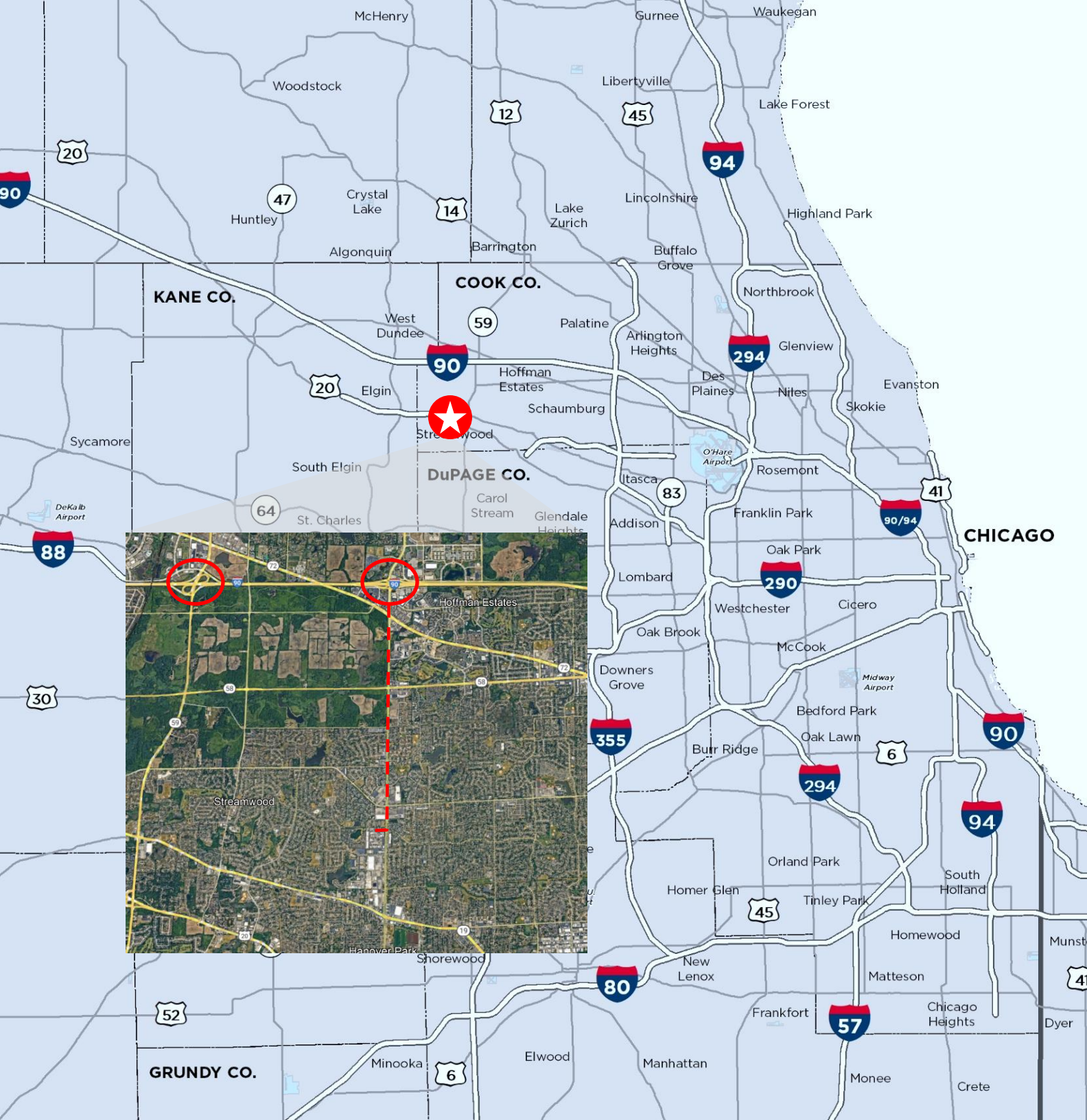
1536 BOURBON PKWY | STREAMWOOD | ILLINOIS











---

**3 MILES**  
TO I-90 INTERSTATE

---

**20 MILES**  
TO O'HARE AIRPORT

---

**34 MILES**  
TO CHICAGO CBD

---

# CONTACT INFORMATION

**DAVID FRIEDLAND**

Executive Director

David.Friedland@Cushwake.com  
847 720 1370

**AL CARUANA**

Executive Managing Director

Al.Caruana@Cushwake.com  
847 720 1326

**MICHAEL LABEK**

Senior Associate

Michael.Labek@Cushwake.com  
312 470 2309

