

AVAILABLE FOR LEASE

# 460 S EL MONTE AVENUE

LOS ALTOS, CA 94022



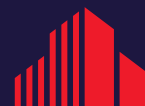
## Contact Info

### STEVEN JENAB

Senior Director  
+1 650 320 0211  
steven.jenab@cushwake.com  
Lic #02085072

### SCOTT O'BRIEN

Director  
+1 650 320 0296  
scott.obrien@cushwake.com  
Lic #01339087



**CUSHMAN &  
WAKEFIELD**

525 University Avenue, Suite 220  
Palo Alto, CA 94301  
+1 650 852 1200  
[cushmanwakefield.com](http://cushmanwakefield.com)

# 460 S EL MONTE AVENUE

Los Altos, CA 94022

## PROPERTY HIGHLIGHTS

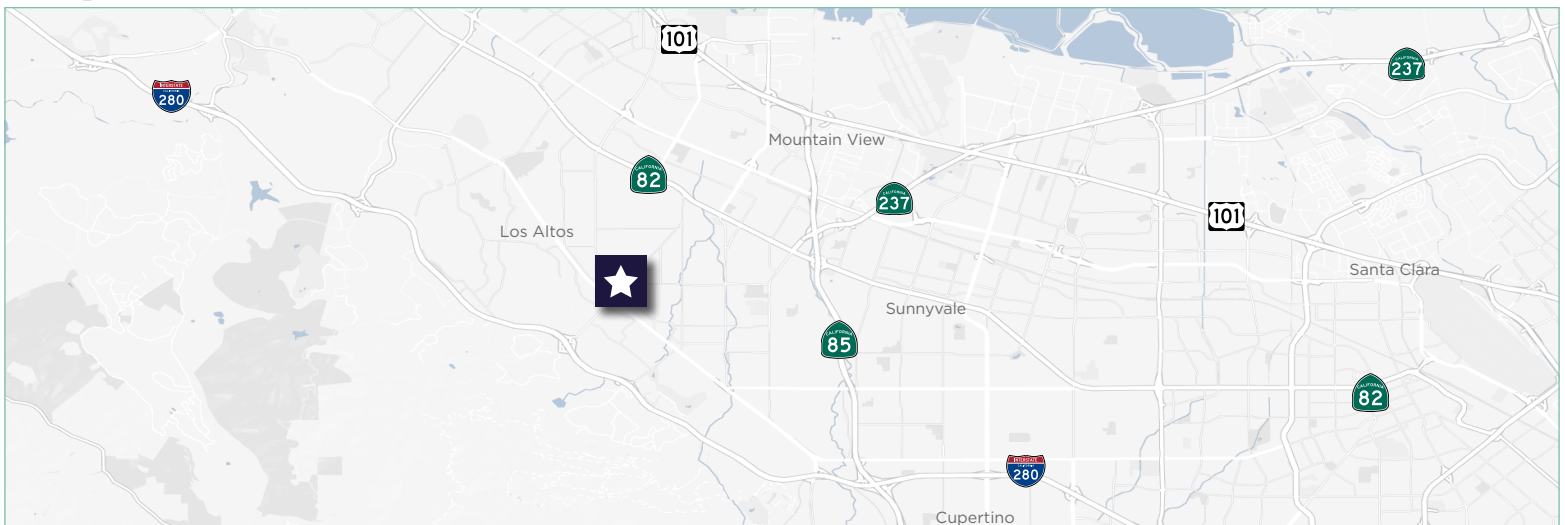
- $\pm 6,200$  SF of indoor classroom space
- Over  $\pm 8,000$  SF of outdoor space with play structure
- Licensed for 45 children
- Possible to increase to 60 children with installation of additional bathroom
- Desirable Los Altos Location
- 10+ Elementary Schools within 2 Mile Radius
- Walking Distance to Downtown Los Altos



## DEMOGRAPHICS

	2-mile	5-mile
2024 Households	23,130	112,510
2024 Avg. Income	\$199,000	\$194,000

## SITE MAP

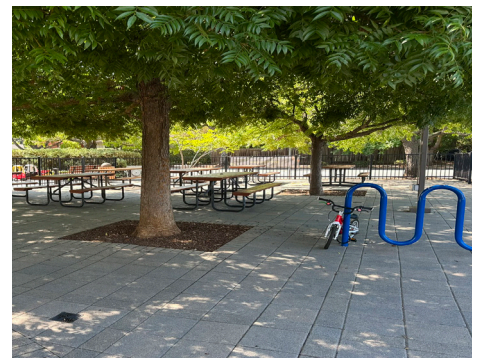
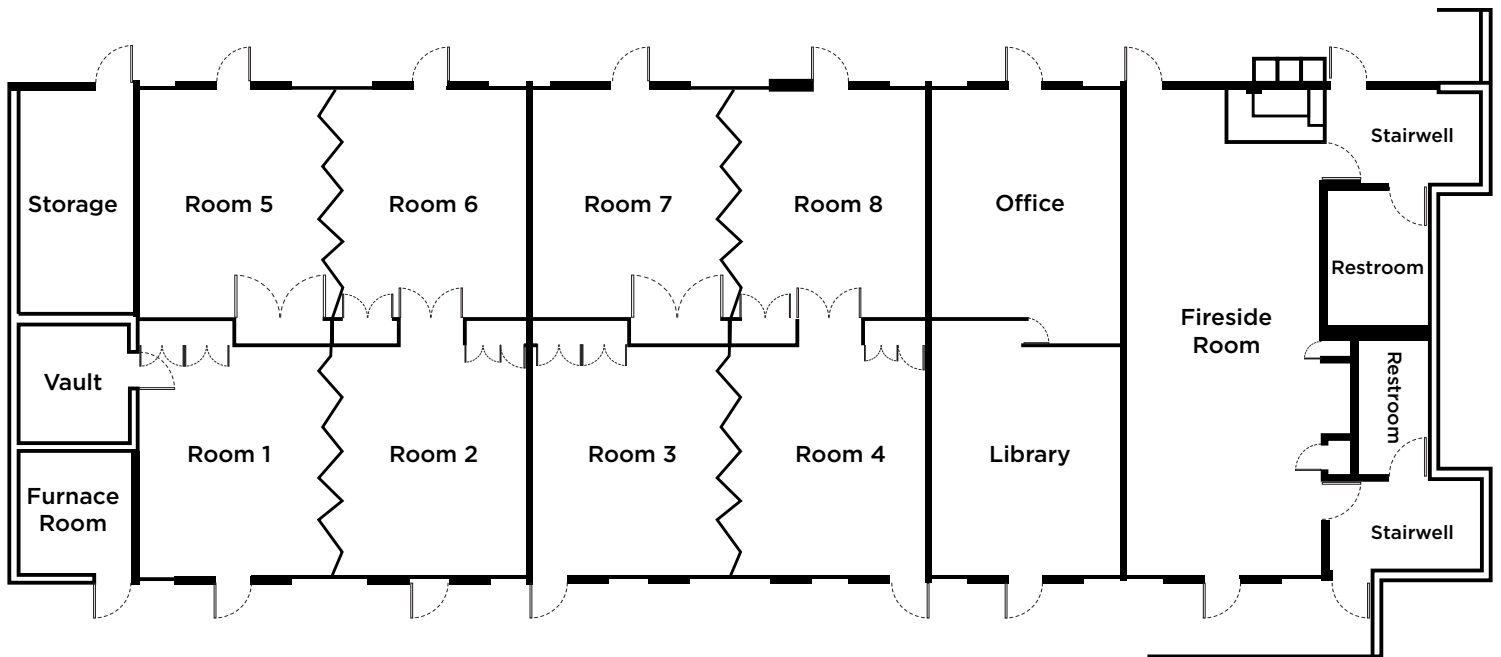




# 460 S EL MONTE AVENUE

Los Altos, CA 94022

## FLOOR PLAN





# 460 S EL MONTE AVENUE

Los Altos, CA 94022

## AMENITIES MAP





# 460 S EL MONTE AVENUE

Los Altos, CA 94022

## NEARBY SCHOOLS MAP



### ELEMENTARY SCHOOLS

1. Addison Elementary
2. Duveneck Elementary
3. Packard Children's Hospital/Stanford
4. Walter Hays Elementary
5. Ohlone Elementary
6. Synapse School
7. Case Dei Bambini School
8. Keys Family Day School
9. The Girls' Middle School
10. Escondido Elementary
11. Palo Verde Elementary
12. El Carmelo Elementary
13. Lucille M Nixon Elementary
14. Fairmeadow Elementary
15. Keys Family Day School
16. Barron Park Elementary
17. Herbery Hoover Elementary
18. Imagination Lab School
19. Greendell
20. Athena Academy
21. Juana Briones Elementary
22. Gideon Hausner Jewish Day School
23. Bowman School
24. Monta Loma Elementary
25. Bullis Charter
26. Santa Rita Elementary
27. Theuerkauf Elementary
28. Stevenson Elementary
29. MV -Los Altos Montessori
30. Gabriela Mistral Elementary
31. Mariano Castro Elementary
32. Khan Lab School
33. Gardner Bullis Elementary

34. Yew Chung Int'l School SV
35. St Paul Lutheran CD Center
36. Almond Elementary
37. Jose Antonio Vargas Elementary
38. St Joseph School MV
39. Edith Landels Elementary
40. Covington Elementary
41. St Stephen Lutheran School
42. Benjamin Bubbs Elementary
43. Springer Elementary
44. Heritage Academy
45. Amy Imai Elementary
46. St Nicholas Catholic School
47. Vargas Elementary
48. Ventana School
49. Bishop Elementary
50. Sunnyvale Christian School
51. Loyola Elementary
52. Miramonte School
53. Little Tree Montessori
54. Cherry Chase Elementary
55. Cumberland Elementary
56. Oak Ave Elementary

57. Ellis Elementary
58. Stratford School
59. Green Chinese School
60. Waldorf School of the Peninsula
61. St Simon
62. Braly Elementary
63. Champion Kinder Int'l School
64. Montclair elementary
65. S Peninsula Hebrew Day School
66. Resurrection School
67. Villa Montessori
68. West Valley Elementary
69. Chester W Nimitz Elementary
70. French American School SV
71. Delor Montessori School
72. Louis E Stockmeir Elementary

73. Stevens Creek Elementary
74. Garden Gate Elementary
75. LP Collins Elementary
76. William Faria Elementary



AVAILABLE FOR LEASE

# 460 S EL MONTE AVENUE

LOS ALTOS, CA 94022



## Contact Info

### STEVEN JENAB

Senior Director  
+1 650 320 0211  
steven.jenab@cushwake.com  
Lic #02085072

### SCOTT O'BRIEN

Director  
+1 650 320 0296  
scott.obrien@cushwake.com  
Lic #01339087



**CUSHMAN &  
WAKEFIELD**

525 University Avenue, Suite 220  
Palo Alto, CA 94301  
+1 650 852 1200  
[cushmanwakefield.com](http://cushmanwakefield.com)

©2025 Cushman & Wakefield. All rights reserved. The information contained in this communication is strictly confidential. This information has been obtained from sources believed to be reliable but has not been verified. NO WARRANTY OR REPRESENTATION, EXPRESS OR IMPLIED, IS MADE AS TO THE CONDITION OF THE PROPERTY (OR PROPERTIES) REFERENCED HEREIN OR AS TO THE ACCURACY OR COMPLETENESS OF THE INFORMATION CONTAINED HEREIN, AND SAME IS SUBMITTED SUBJECT TO ERRORS, OMISSIONS, CHANGE OF PRICE, RENTAL OR OTHER CONDITIONS, WITHDRAWAL WITHOUT NOTICE, AND TO ANY SPECIAL LISTING CONDITIONS IMPOSED BY THE PROPERTY OWNER(S). ANY PROJECTIONS, OPINIONS OR ESTIMATES ARE SUBJECT TO UNCERTAINTY AND DO NOT SIGNIFY CURRENT OR FUTURE PROPERTY PERFORMANCE.