



MEDICAL OFFICE FOR LEASE
2030 Forest Avenue
San Jose, California

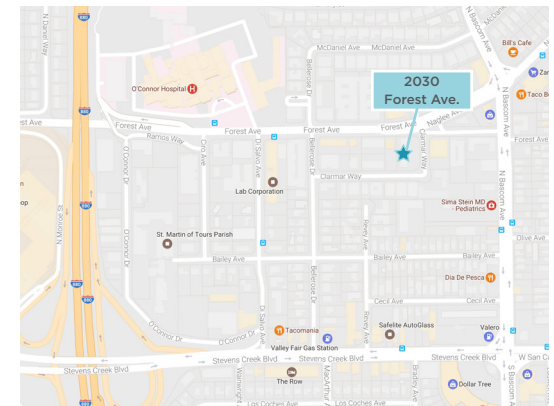


MEDICAL OFFICE FOR LEASE

±2,588 SF Available for Lease

Property Highlights

- Large Waiting Rooms, Open Offices and Private Restrooms
- Private Offices and Multiple Exam Rooms
- Within Walking Distance to O'Connor Hospital
- Easy Access to Hwy 17, 880, and 280
- Monument & Building Signage Available
- Close Proximity to Valley Fair and Santana Row
- Future Expansion
- \$2.85 psf Gross
- Call to Tour



Aaron Fritz, CCIM
Senior Director
+1 408 436 3661
aaron.fritz@cushwake.com
LIC #01216555

Drew Arvay
Managing Director
+1 408 436 3647
drew.arvay@cushwake.com
LIC #00511262

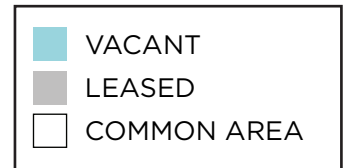
300 Santana Row, Fifth Floor
San Jose, California
main +1 408 615 3400
fax +1 408 615 3444
cushmanwakefield.com



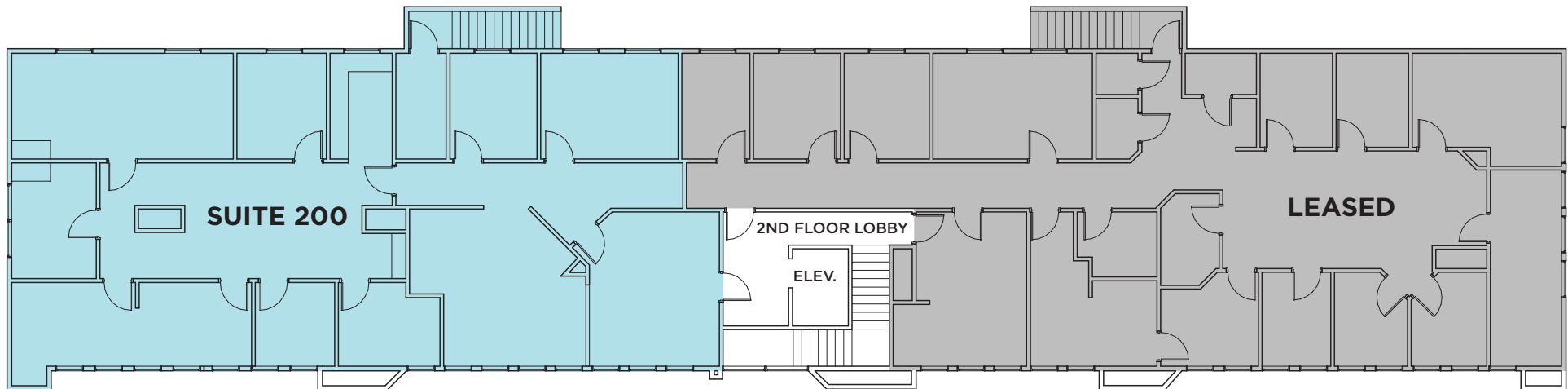
MEDICAL OFFICE FOR LEASE
2030 Forest Avenue
San Jose, California

SECOND FLOOR

±2,588 SF Available



SUITE 200: ±2,588 SF



Aaron Fritz, CCIM
Senior Director
+1 408 436 3661
aaron.fritz@cushwake.com
LIC #01216555

Drew Arvay
Managing Director
+1 408 436 3647
drew.arvay@cushwake.com
LIC #00511262

300 Santana Row, Fifth Floor
San Jose, California
main +1 408 615 3400
fax +1 408 615 3444
cushmanwakefield.com