



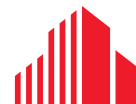
Jay Bergmeier 402-895-7500

RENOVO
ROOFING AND REPAIR

YOUR NAME HERE

OFFICE SPACE FOR LEASE

MISSION HILLS PROFESSIONAL BUILDING
16707 Q STREET / OMAHA, NE 68135



CUSHMAN &
WAKEFIELD

LUND
COMPANY

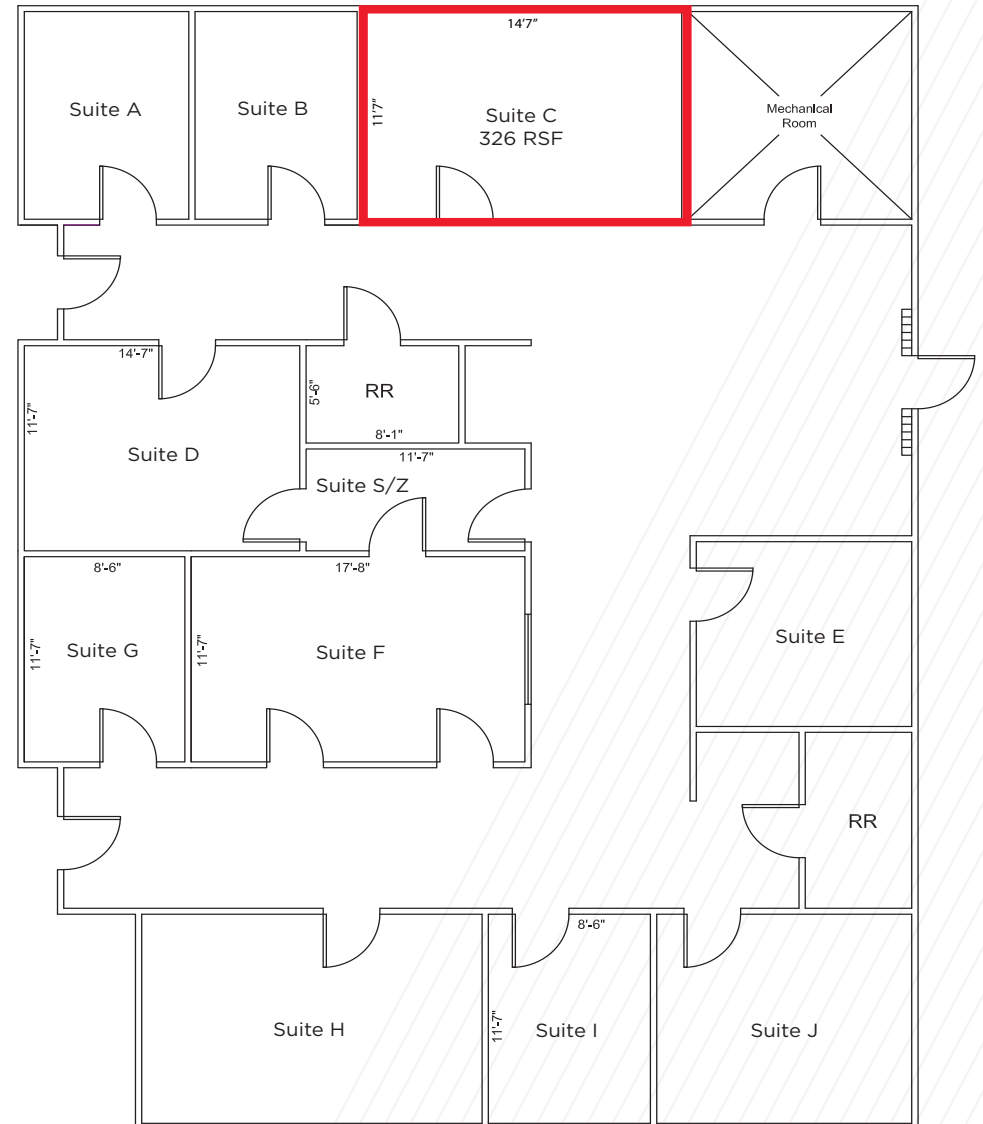
PROPERTY HIGHLIGHTS

16707 Q STREET / OMAHA, NE 68135

Cut your commute and get noticed. This office building is just east of 168th and Q Street with monument signage available, this property has excellent visibility. Full service leases with building management on site make this a convenient combination.

Monthly Rate:	\$800/month (Full Service)
Space Available:	Suite C - 326 RSF
Total Contiguous:	326 RSF
Available:	Immediately
Building Size:	6,076 SF
Year Built:	1995
No. of Floors:	1
Total Site Area:	1.13 AC
Zoning:	Commercial

****Opportunity for monument signage along Q Street, \$200/month!**



16707 Q STREET / OMAHA, NE 68135





FOR MORE INFORMATION, CONTACT:

TREY MACKNIGHT

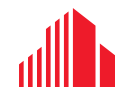
Associate
+1 402 548 4079
trey.macknight@lundco.com

TYLER CULLOR

Associate
+1 402 548 4025
tyler.cullor@lundco.com

Independently Owned and Operated / A Member of the Cushman & Wakefield Alliance

©2025 Cushman & Wakefield. All rights reserved. The information contained in this communication is strictly confidential. This information has been obtained from sources believed to be reliable but has not been verified. NO WARRANTY OR REPRESENTATION, EXPRESS OR IMPLIED, IS MADE AS TO THE CONDITION OF THE PROPERTY (OR PROPERTIES) REFERENCED HEREIN OR AS TO THE ACCURACY OR COMPLETENESS OF THE INFORMATION CONTAINED HEREIN, AND SAME IS SUBMITTED SUBJECT TO ERRORS, OMISSIONS, CHANGE OF PRICE, RENTAL OR OTHER CONDITIONS, WITHDRAWAL WITHOUT NOTICE, AND TO ANY SPECIAL LISTING CONDITIONS IMPOSED BY THE PROPERTY OWNER(S). ANY PROJECTIONS, OPINIONS OR ESTIMATES ARE SUBJECT TO UNCERTAINTY AND DO NOT SIGNIFY CURRENT OR FUTURE PROPERTY PERFORMANCE.



**CUSHMAN &
WAKEFIELD**

LUND
COMPANY