



**AVAILABLE FOR LEASE - \$18.50 Full Service**

# **PIEDMONT CENTRE**

**4000 PIEDMONT PARKWAY**

High Point, NC



# PIEDMONT CENTRE

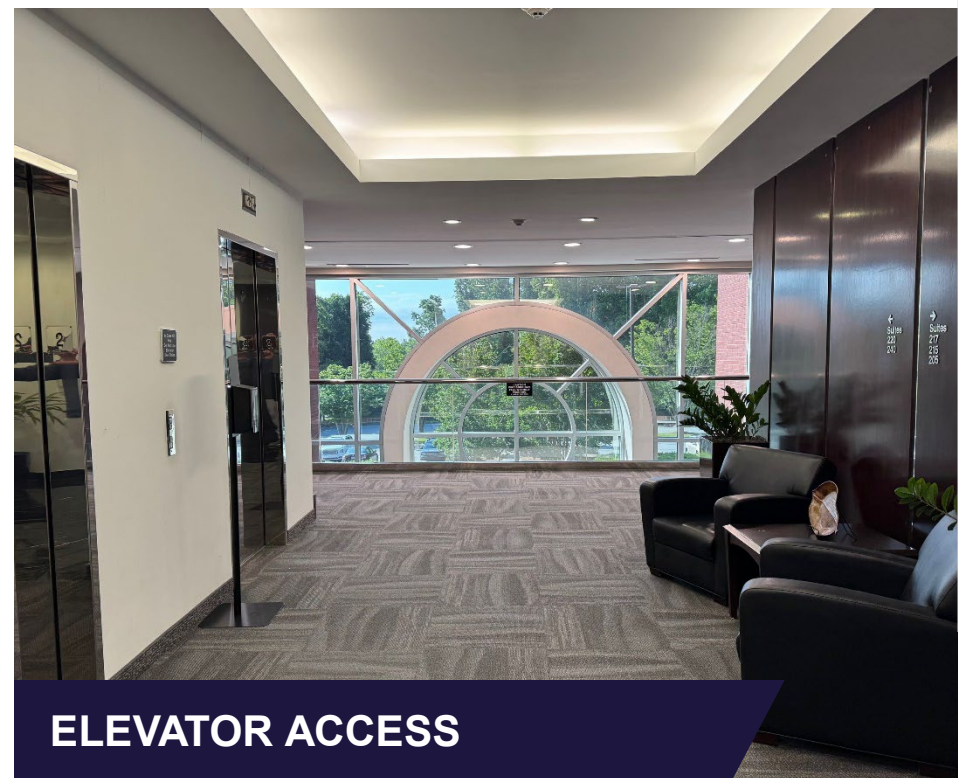
## 4000 PIEDMONT PARKWAY

### PROPERTY FEATURES

- Available For Lease
- Up to ±63,774 SF Class A Office Building
- 4 stories with common stairs and 2 elevators
- ±16,000 SF floor plates
- Located along HWY 68 with excellent visibility and accessibility
- Shared Conference Room available to building tenants
- Ample and convenient parking onsite
- Convenient to several retail and restaurant amenities



**SHARED LOBBY**



**ELEVATOR ACCESS**



**PIEDMONT CENTRE**  
**4000 PIEDMONT PARKWAY**

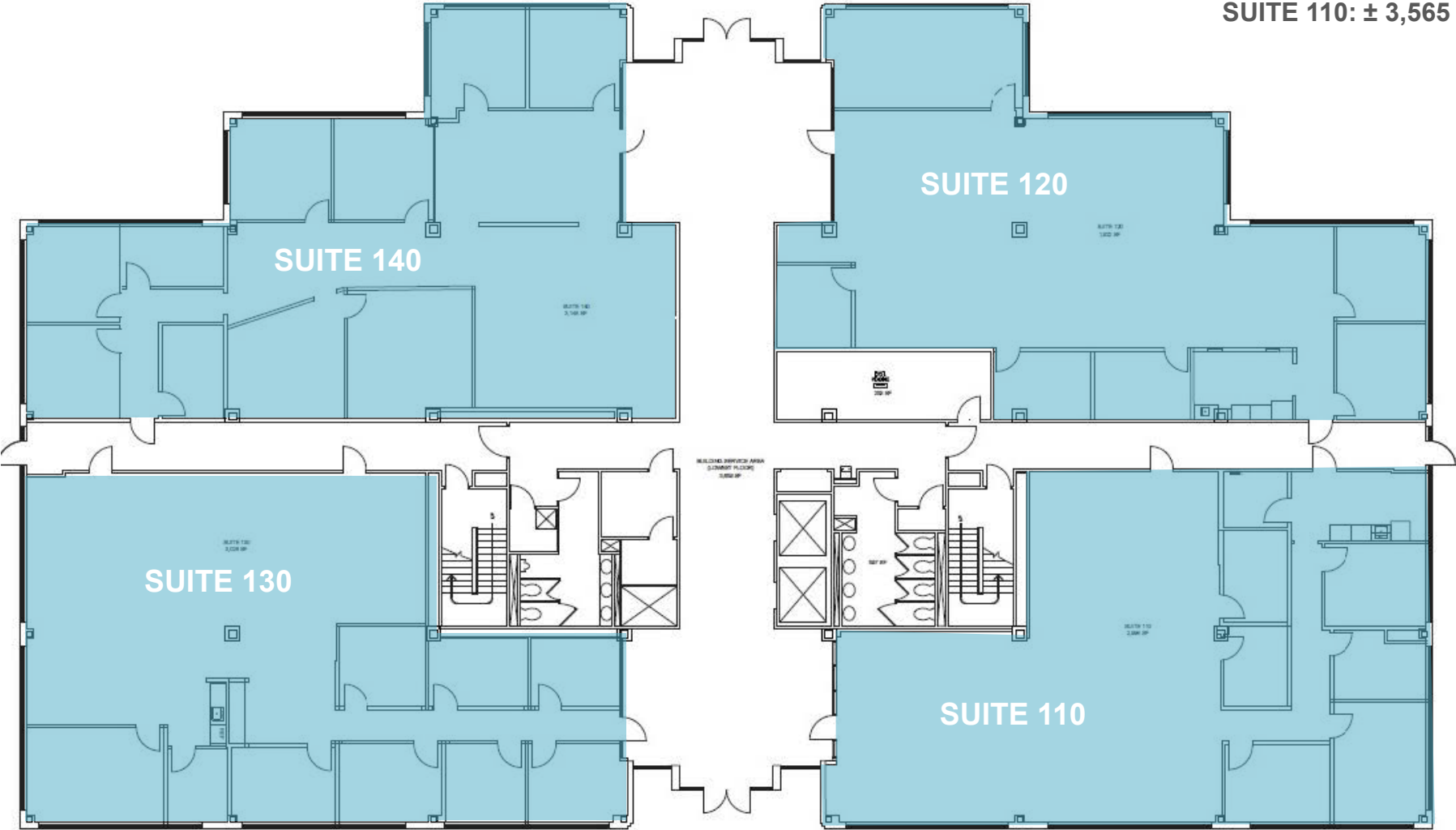
FIRST FLOOR FLOORPLAN

SUITE 140: ±3,749 RSF

SUITE 130: ±3,606 RSF

SUITE 120: ± 3,479 RSF

SUITE 110: ± 3,565 RSF

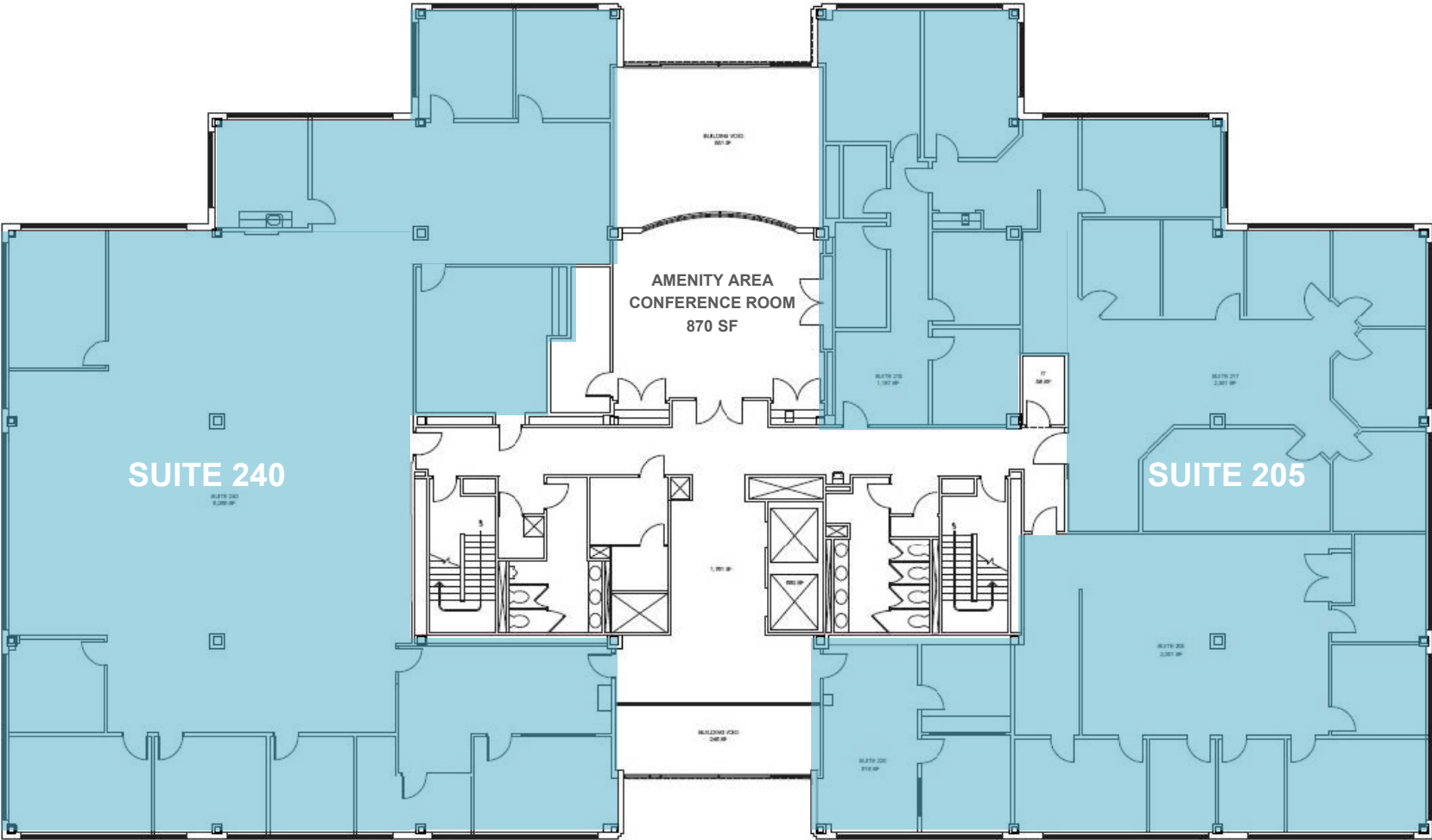


**PIEDMONT CENTRE**  
**4000 PIEDMONT PARKWAY**

SECOND FLOOR FLOORPLAN

SUITE 240: ±7,461 RSF

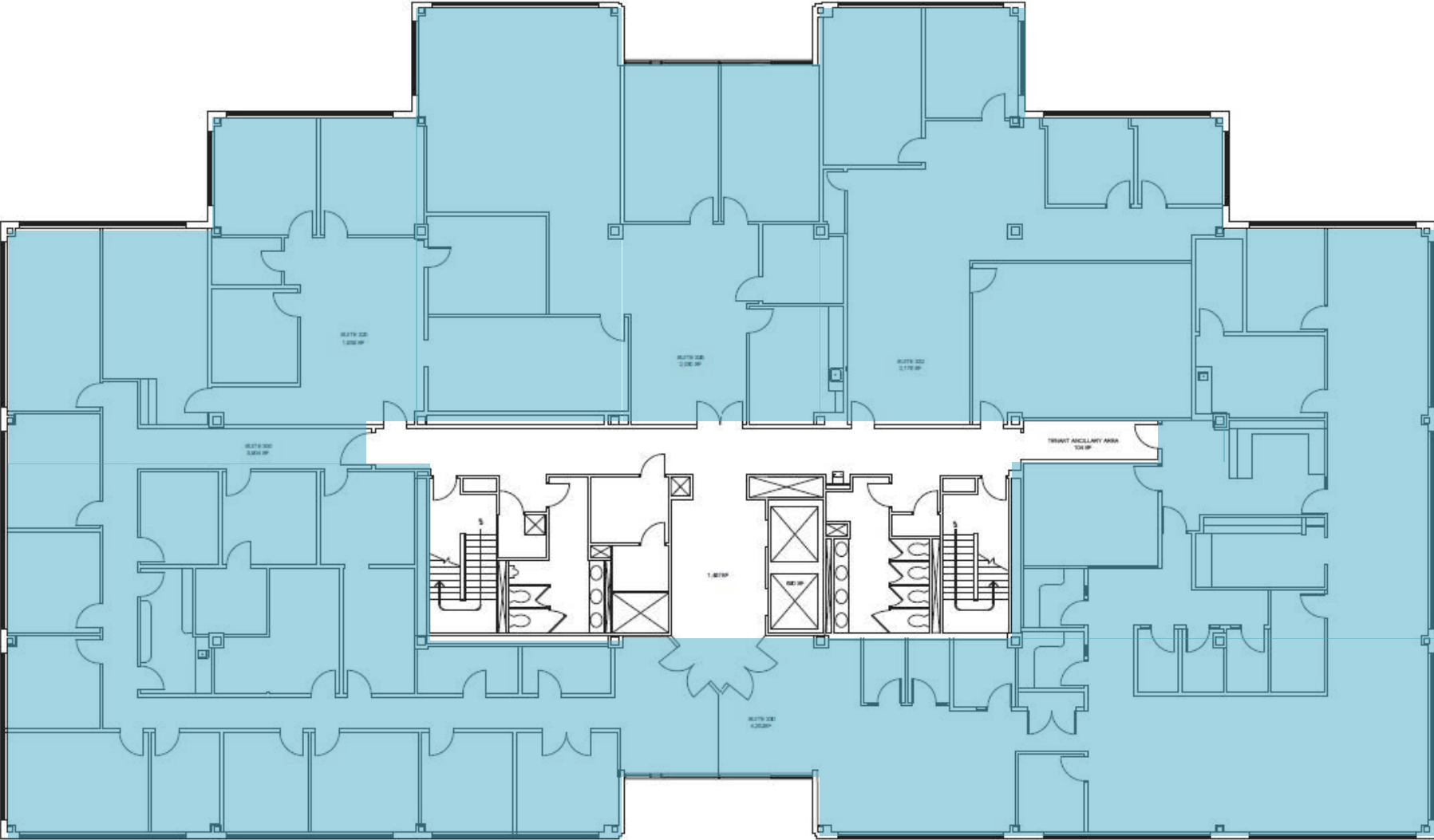
SUITE 205: ±7,389 RSF



**PIEDMONT CENTRE**  
**4000 PIEDMONT PARKWAY**

THIRD FLOOR FLOORPLAN

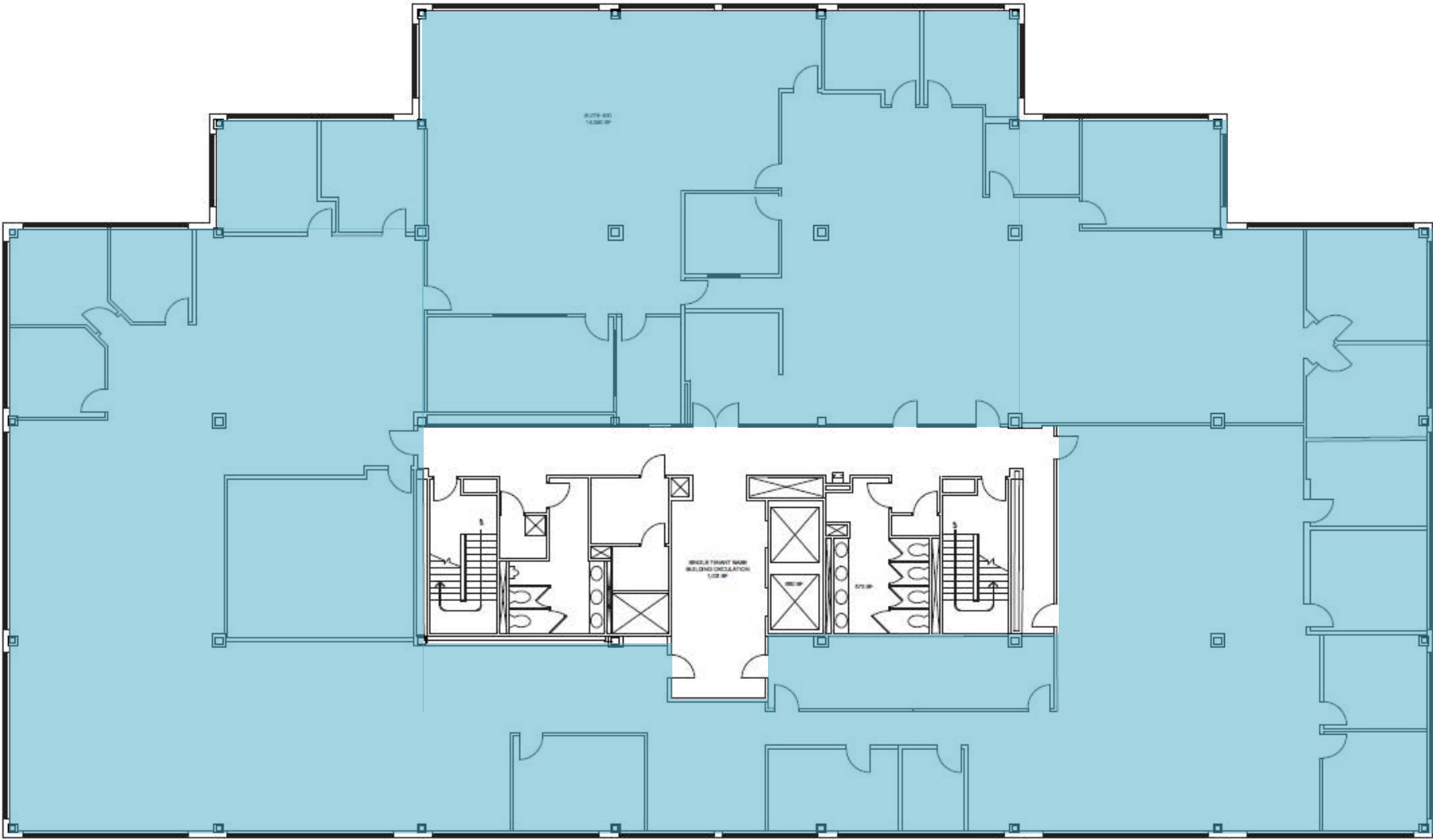
FULL FLOOR AVAILABLE: Up to ±17,173 RSF



**PIEDMONT CENTRE**  
**4000 PIEDMONT PARKWAY**

FOURTH FLOOR FLOORPLAN

FULL FLOOR AVAILABLE: Up to ±17,373 RSF



# PIEDMONT CENTRE 4000 PIEDMONT PARKWAY



21 MINUTES TO WINSTON-SALEM

19 MINUTES TO GREENSBORO

4000 Piedmont Parkway



forv/mazars

TRIANGLE WAREHOUSE

ATLANTIC PACKAGING

MAGELLAN TERMINALS

GILBARCO VEEDER-ROOT

HondaJet

PTI  
PIEDMONT TRIAD INTERNATIONAL AIRPORT

Schneider Electric

amazon

SHEETZ

UNITED STATES POSTAL SERVICE

1-800-PACK-RAT  
Moving & Storage Made Simple™

Jetzero

BOOM

TE connectivity

BAKEMARK

Kaya Korean Restaurant

LINK

simply southern COFFEES

crest leather

acnova

Kevin Powell Motorsports

ANTIQUE MARKET PLACE

VOLVO TRUCKS

BalTec

qorvo

W MARKET STREET

LONG VIEW HILLS

ENDLY AVENUE







**FOR MORE INFORMATION, CONTACT:**

**KEVIN KEMP, SIOR**

Managing Director

+1 336 812 3307

[kevin.kemp@cushwake.com](mailto:kevin.kemp@cushwake.com)

**RYAN GIOFFRE**

Senior Director

+1 336 601 3488

[ryan.gioffre@cushwake.com](mailto:ryan.gioffre@cushwake.com)

©2026 Cushman & Wakefield. All rights reserved. The information contained in this communication is strictly confidential. This information has been obtained from sources believed to be reliable but has not been verified. NO WARRANTY OR REPRESENTATION, EXPRESS OR IMPLIED, IS MADE AS TO THE CONDITION OF THE PROPERTY (OR PROPERTIES) REFERENCED HEREIN OR AS TO THE ACCURACY OR COMPLETENESS OF THE INFORMATION CONTAINED HEREIN, AND SAME IS SUBMITTED SUBJECT TO ERRORS, OMISSIONS, CHANGE OF PRICE, RENTAL OR OTHER CONDITIONS, WITHDRAWAL WITHOUT NOTICE, AND TO ANY SPECIAL LISTING CONDITIONS IMPOSED BY THE PROPERTY OWNER(S). ANY PROJECTIONS, OPINIONS OR ESTIMATES ARE SUBJECT TO UNCERTAINTY AND DO NOT SIGNIFY CURRENT OR FUTURE PROPERTY PERFORMANCE.

