

FOR LEASE

## Post Park Business Center

8719-8861 Boehning Lane, Indianapolis, IN 46219



### PROPERTY HIGHLIGHTS

Excellent visibility; west building fronts I-70

Dock and drive-in access

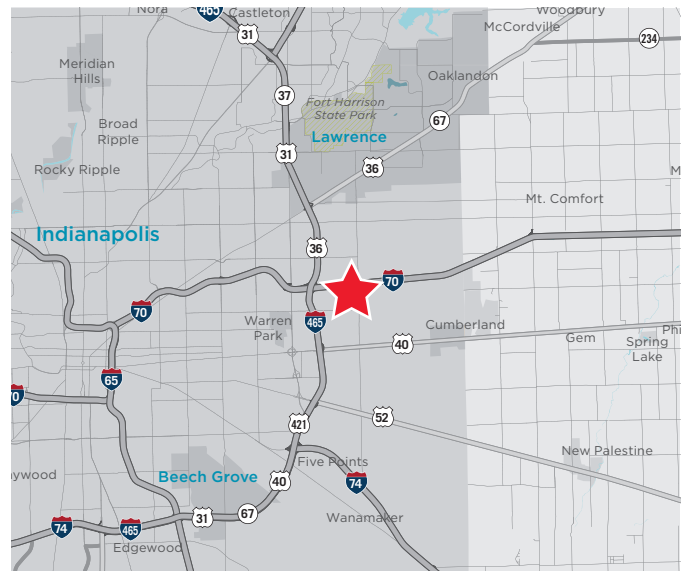
Clear height: 16' - 18'

Double row parking

Easy access to I-70 and I-465 via Post Road

Zoned CS

Wet sprinkler system



#### KEVIN W. ARCHER

Managing Director  
+1 317 218 7217  
kevin.archer@cushwake.com

#### TODD T. VANNATTA, SIOR

Executive Director  
+1 317 639 0455  
todd.vannatta@cushwake.com



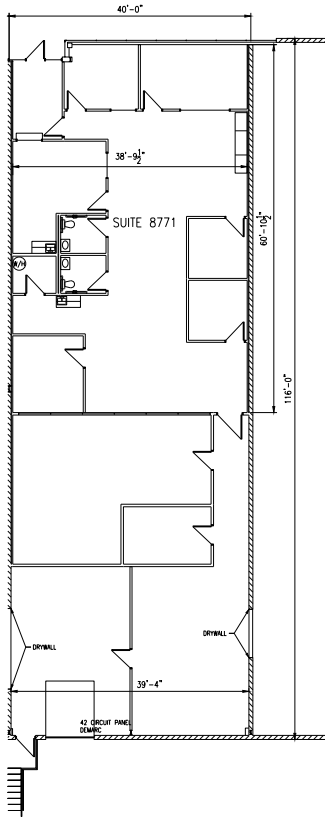
**CUSHMAN &  
WAKEFIELD**

cushmanwakefield.com

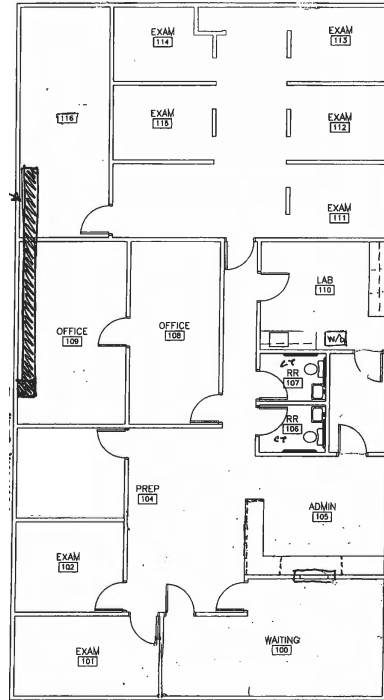
FOR LEASE

# Post Park Business Center

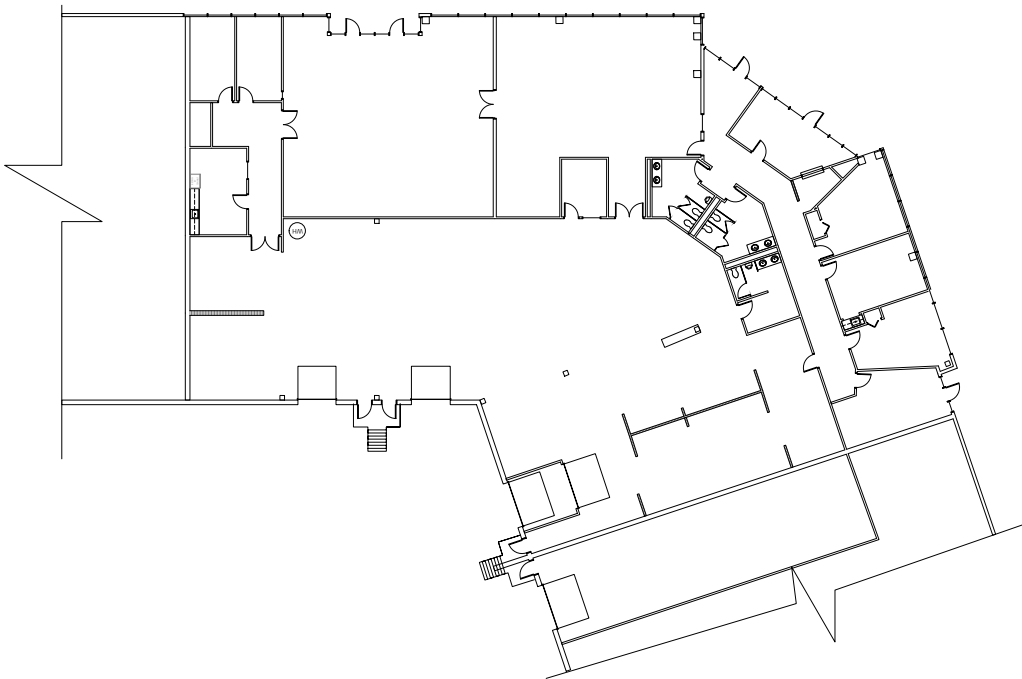
8719-8861 Boehning Lane, Indianapolis, IN 46219



**Suite 8771**  
**4,800 SF**



**Suite 8845**  
**3,170 SF**



**Suite 8909**  
**14,928 SF**



## Space Available

Suite	Total SF	Office SF	Docks/D-I	Clear Ht	Base Rate/SF	OPEX	Mo. Rent
8771	4,800 SF	±3,200 SF	1 / 0	16' - 18'	\$7.25/SF NNN	\$3.09	\$4,136.00
8845	3,170 SF	BTS	1 / 0	16' - 18'	\$7.25/SF NNN	\$3.09	\$2,731.48
8909	14,928 SF	Demo Considered	4 / 0	16' - 18'	\$7.00/SF NNN	\$3.09	\$12,551.96

FOR LEASE

# Post Park Business Center

8719-8861 Boehning Lane, Indianapolis, IN 46219



## Aerial



**KEVIN W. ARCHER**  
Managing Director  
+1 317 218 7217  
kevin.archer@cushwake.com

**TODD T. VANNATTA, SIOR**  
Executive Director  
+1 317 639 0455  
todd.vannatta@cushwake.com

One American Square, Suite 1800  
Indianapolis, IN 46282  
Main +1 317 639 0515  
Fax +1 317 639 0504  
**cushmanwakefield.com**