

FOR LEASE

**50,174 SQ. FT.**

# ONTARIO MILLS & VINTAGE

5250 ONTARIO MILLS PARKWAY | SUITE 100 | ONTARIO CA

Represented by:

**CRUISE ADAMS**

+1 909 942 4641

[cruise.adams@cushwake.com](mailto:cruise.adams@cushwake.com)

Lic. 02075368

**GRANT ARTHUR**

+1 909 942 4699

[grant.arthur@cushwake.com](mailto:grant.arthur@cushwake.com)

Lic. 02064730

**PHIL LOMBARDO**

+1 909 942 4678

[phil.lombardo@cushwake.com](mailto:phil.lombardo@cushwake.com)

Lic. 00892477

Owned & Managed by:

 PANATTONI®

 Principal®

 CUSHMAN &  
WAKEFIELD





FOR LEASE

**50,174 SQ. FT.**

# ONTARIO MILLS & VINTAGE

5250 ONTARIO MILLS PARKWAY | SUITE 100 | ONTARIO CA

## PROPERTY FEATURES

- $\pm 50,174$  SF (POL  $\pm 129,553$  SF building)
- $\pm 1,138$  SF of Office
- 30' Minimum Clearance
- ESFR Sprinkler System
- 190' Shared Truck Court Yard
- 8 Dock High Loading Doors (9' x 10')
- 1 Grade Level Loading Door (12' x 16')
- 52' x 50' Column Spacing (typical)
- 400 Amp, 277/480v Main Switchgear
- 6" Minimum Slab Thickness, 4,000 PSI
- LED Warehouse Lighting on Motion Sensors
- Easy Access to the I-10, I-15, I-210 and SR-60 Freeways





FOR LEASE | 50,174 SQ. FT.

# ONTARIO MILLS & VINTAGE

5250 ONTARIO MILLS PARKWAY | SUITE 100 | ONTARIO CA



INTERSTATE  
10

ONTARIO MILLS PARKWAY

PACIFIC SALES  
KITCHEN & HOME

ANKER

Suite 400  
32,750 SF

LEASED

Suite 300  
46,629 SF

LEASED

8 Dock Doors

50'  
52'

Suite 100  
50,174 SF

AVAILABLE



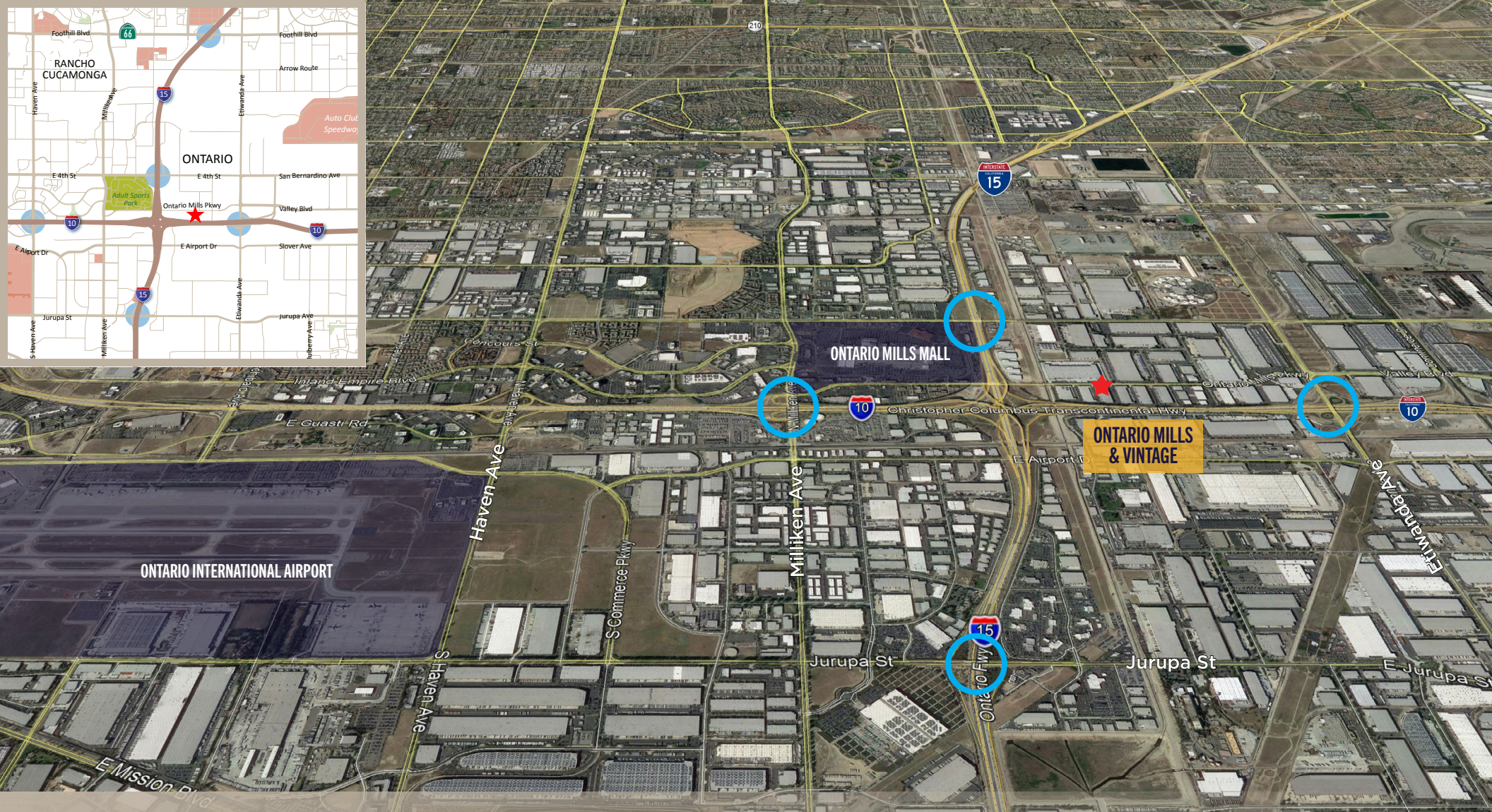
FOR LEASE | 50,174 SQ. FT.

# ONTARIO MILLS & VINTAGE

5250 ONTARIO MILLS PARKWAY | SUITE 100 | ONTARIO CA







Represented by:

**CRUISE ADAMS**

+1 909 942 4641

[cruise.adams@cushwake.com](mailto:cruise.adams@cushwake.com)

Lic. 02075368

**GRANT ARTHUR**

+1 909 942 4699

[grant.arthur@cushwake.com](mailto:grant.arthur@cushwake.com)

Lic. 02064730

**PHIL LOMBARDO**

+1 909 942 4678

[phil.lombardo@cushwake.com](mailto:phil.lombardo@cushwake.com)

Lic. 00892477

Owned & Managed by:

 PANATTONI®

In Partnership with:

 Principal®

©2025 Cushman & Wakefield. All rights reserved. The information contained in this communication is strictly confidential. This information has been obtained from sources believed to be reliable but has not been verified. NO WARRANTY OR REPRESENTATION, EXPRESS OR IMPLIED, IS MADE AS TO THE CONDITION OF THE PROPERTY (OR PROPERTIES) REFERENCED HEREIN OR AS TO THE ACCURACY OR COMPLETENESS OF THE INFORMATION CONTAINED HEREIN, AND SAME IS SUBMITTED SUBJECT TO ERRORS, OMISSIONS, CHANGE OF PRICE, RENTAL OR OTHER CONDITIONS, WITHDRAWAL WITHOUT NOTICE, AND TO ANY SPECIAL LISTING CONDITIONS IMPOSED BY THE PROPERTY OWNER(S). ANY PROJECTIONS, OPINIONS OR ESTIMATES ARE SUBJECT TO UNCERTAINTY AND DO NOT SIGNIFY CURRENT OR FUTURE PROPERTY PERFORMANCE.

 **CUSHMAN & WAKEFIELD**