

GATEWAY CHULA VISTA  
333 H ST, CHULA VISTA, CA  
AVAILABLE FOR LEASE



**BILL CAVANAGH**  
+1 858 546 5460  
bill.cavanagh@cushwake.com  
CA LIC. #00905262

**MATTHEW MELENDRES**  
+1 408 510 9968  
matthew.melendres@cushwake.com  
CA LIC. #02162349





## PROPERTY HIGHLIGHTS

- **131,760 SF CLASS "A" SIX STORY BUILDING**
- **OFFICE, MEDICAL & RETAIL USE AVAILABLE**  
Allowing for a multitude of users
- **SAFE & SECURE**  
24/7 on-site security with after hours key card access
- **EASILY ACCESSIBLE**  
To I-5, I-805 and public transportation. 6-story parking garage with 4/1000 parking
- **ON-SITE & NEARBY AMENITIES**  
On-site amenities and close to Chula Vista Shopping Center. Across the street from SD County Regional Courthouse and walking distance to Scripps Mercy Hospital
- **SIGNAGE OPPORTUNITIES**





## GATEWAY CHULA VISTA

### SECOND FLOOR

SUITE	AVAILABLE SF	AVAILABILITY	RATE
2050	1,222 SF	NOW	\$3.15 MG + E

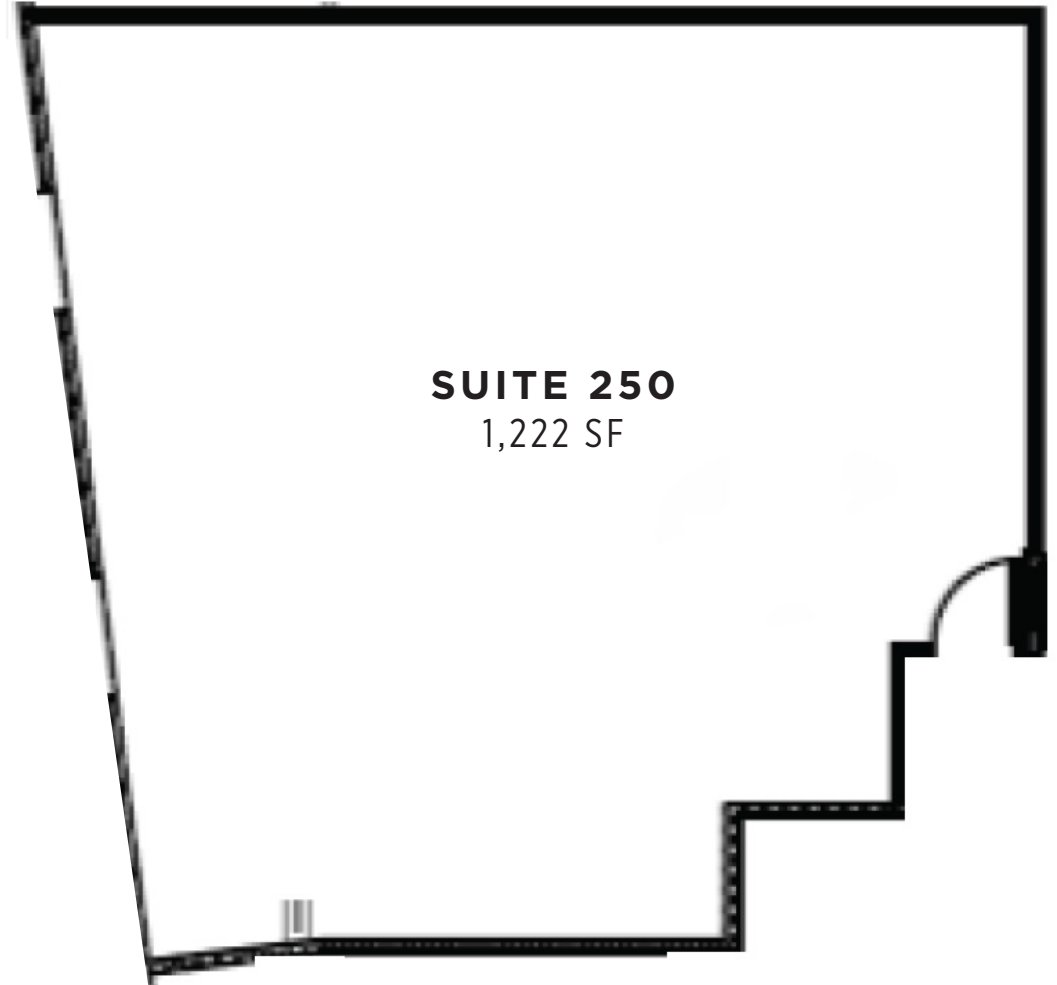
### FIFTH FLOOR

SUITE	AVAILABLE SF	AVAILABILITY	RATE
5010	5,160 SF	NOW	\$3.15 MG + E



# GATEWAY CHULA VISTA

## SECOND FLOOR



**SUITE 250**

1,222 SF

VIRTUAL TOUR



**SUITE**

**AVAILABLE SF**

**AVAILABILITY**

**RATE**

**COMMENTS**

2050

1,222 SF

NOW

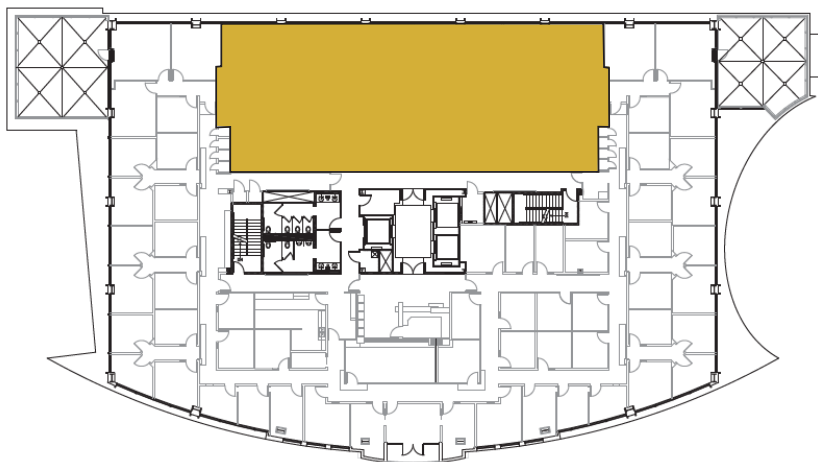
\$3.15 MG + E

Shell Space

# GATEWAY CHULA VISTA

## FIFTH FLOOR

VIRTUAL TOUR



**SUITE 510**  
5,160 SF

**SUITE**

**AVAILABLE SF**

**AVAILABILITY**

**RATE**

**COMMENTS**

5010

5,160 SF

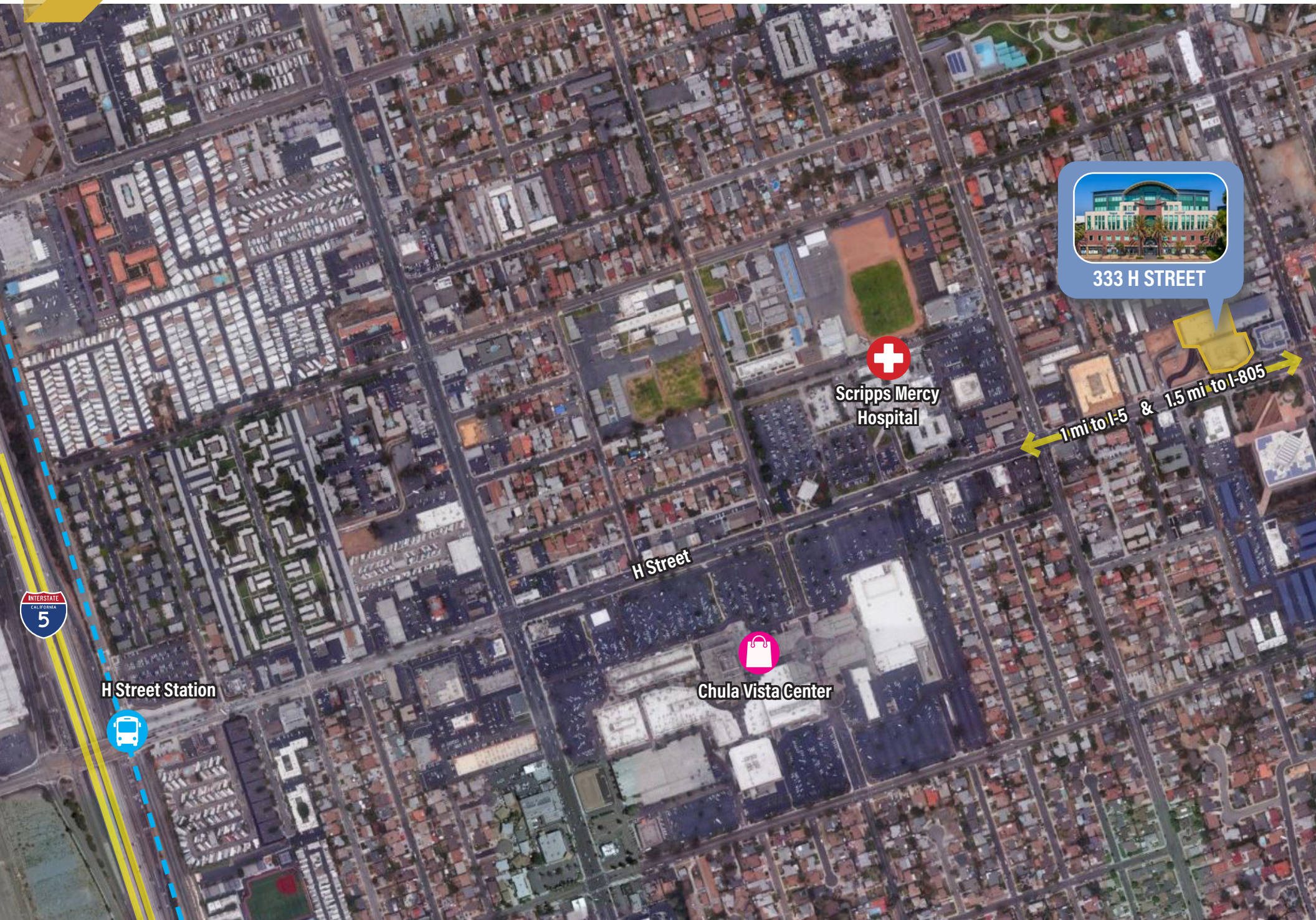
NOW

\$3.15 MG + E

Shell space



# GATEWAY CHULA VISTA | ACCESSIBILITY







**POPULATION**

169,193



**HOUSEHOLDS**

53,369



**MEDIAN AGE**

35.70



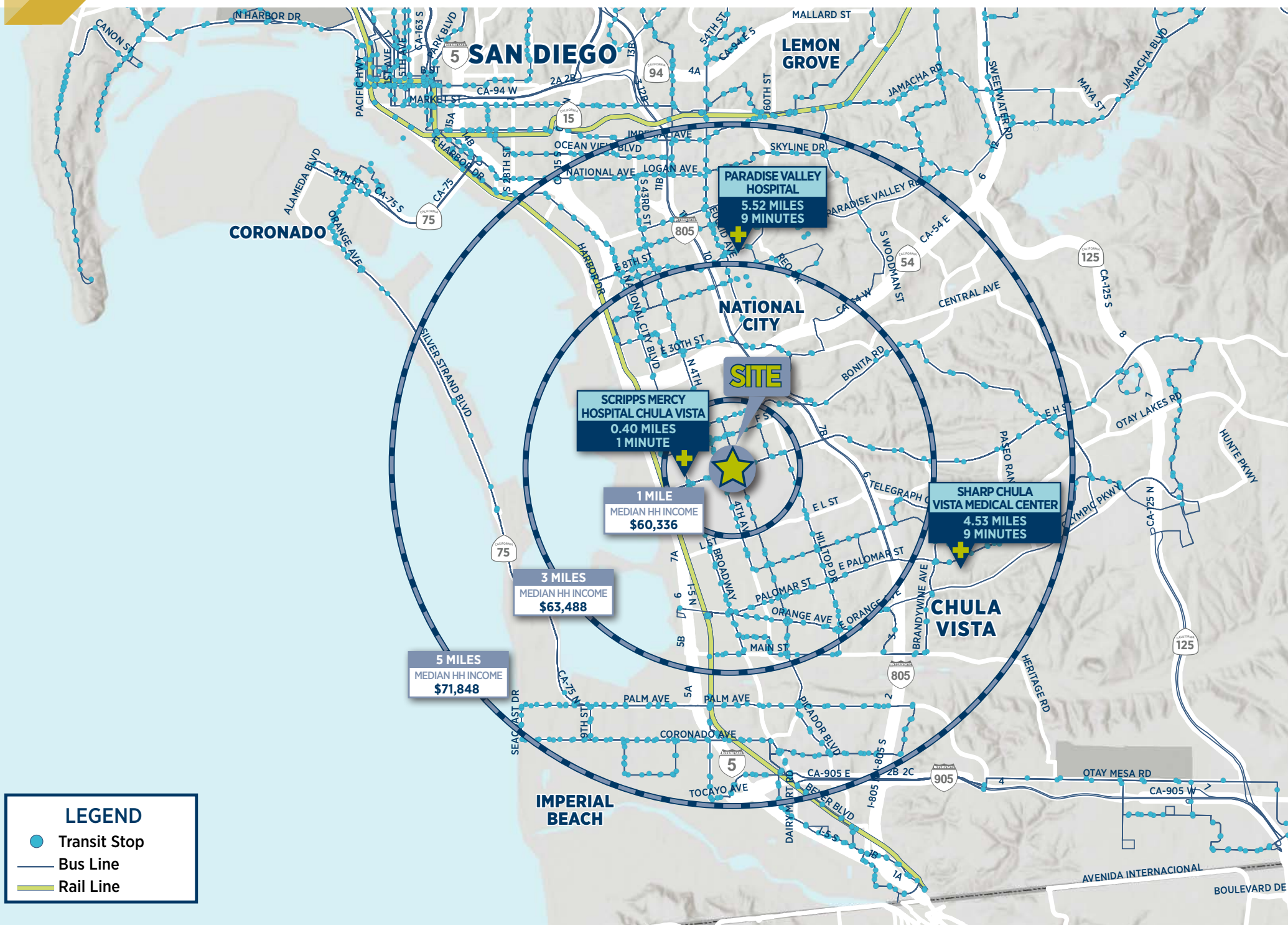
**AVG. HOUSEHOLD INCOME**

\$59,171

\*DATA WITHIN A 3 MILE RADIUS









# PATIENT DEMAND FORECAST

## CHULA VISTA

Service Line	2024 Volume	2029 Volume	2034 Volume	5 Yr Growth	10 Yr Growth
Endocrinology	2,537	3,115	3,392	22.8%	33.7%
Psychiatry	171,518	198,124	206,557	15.5%	20.4%
Physical Therapy/Rehabilitation	308,563	349,062	384,927	13.1%	24.7%
Spine	2,225	2,399	2,471	7.8%	11.1%
ENT	37,656	39,156	40,094	4.0%	6.5%
Cosmetic Procedures	9,438	9,812	9,671	4.0%	2.5%
Cardiology	103,617	107,490	111,769	3.7%	7.9%
Miscellaneous Services	231,479	239,503	245,365	3.5%	6.0%
Pain Management	12,424	12,850	13,198	3.4%	6.2%
Vascular	17,565	18,131	18,697	3.2%	6.4%
Lab	498,811	514,800	526,702	3.2%	5.6%
Orthopedics	33,878	34,890	36,739	3.0%	8.4%
Oncology	15,976	16,360	16,899	2.4%	5.8%
Nephrology	5,714	5,815	5,882	1.8%	2.9%
Neurosurgery	1,077	1,095	1,164	1.7%	8.1%
Evaluation and Management	1,247,515	1,266,087	1,242,089	1.5%	-0.4%
Ophthalmology	93,601	94,692	95,262	1.2%	1.8%
Neurology	19,567	19,793	19,901	1.2%	1.7%
Radiology	331,248	329,926	329,966	-0.4%	-0.4%
Dermatology	49,391	49,130	48,844	-0.5%	-1.1%



Market Scenario Planner displays the types of services patients in your market are expected to use and allows projections to be customized according to five key growth drivers; disease prevalence, care management, insurance, readmissions and technology shifts. The above data is representative of the property which includes areas in within a 5 mile radius.



# GATEWAY CHULA VISTA 333 H ST, CHULA VISTA, CA

For More Information, Please Contact:

**BILL CAVANAGH**

+1 858 546 5460

[bill.cavanagh@cushwake.com](mailto:bill.cavanagh@cushwake.com)

CA LIC. #00905262

**MATTHEW MELENDRES**

+1 408 510 9968

[matthew.melendres@cushwake.com](mailto:matthew.melendres@cushwake.com)

CA LIC. #02162349

 Scripps |  CUSHMAN & WAKEFIELD

12830 El Camino Real | Suite 100  
San Diego, CA 92130 | USA  
[cushmanwakefield.com](http://cushmanwakefield.com)