

FOR LEASE

169 NORTH BUSINESS CENTER

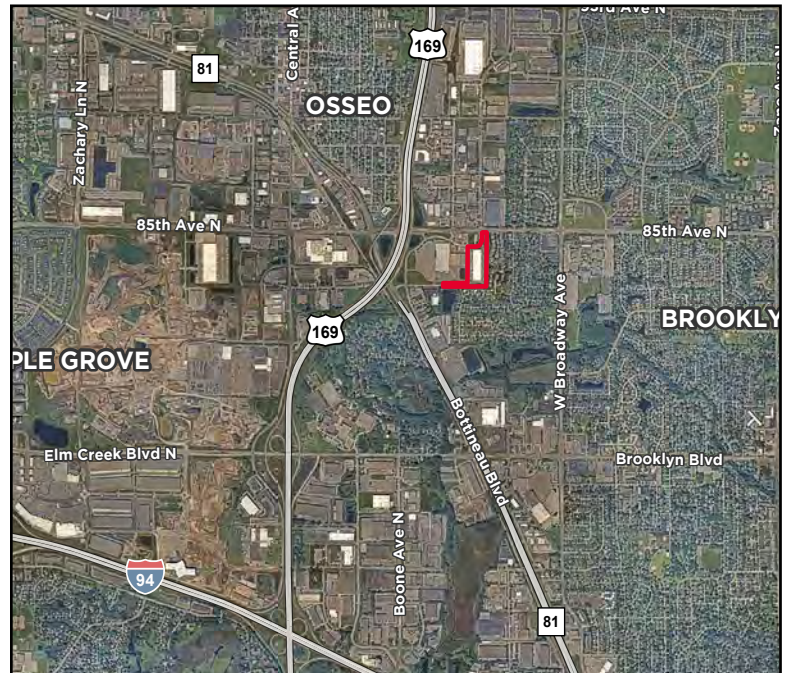
8400 Wyoming Ave, Brooklyn Park, MN



27,706 SF FOR LEASE

PROPERTY HIGHLIGHTS

- Available April 1, 2026
- Outstanding parking
- Incredible access to Hwy 169 via 85th Ave



For more information, please contact:

BRENT MASICA

Executive Managing Director
+1 952 893 8231
brent.masica@cushwake.com

Jason Meyer

Executive Director
+1 952 820 8735
jason.j.meyer@cushwake.com

Danny McNamara

Managing Director
+1 952 893 8895
danny.mcnamara@cushwake.com

3500 American Blvd W Suite 200
Minneapolis, MN 55431
Main +1 952 831 1000
cushmanwakefield.com

© 2025 Cushman & Wakefield. All rights reserved. The information contained in this communication is strictly confidential. This information has been obtained from sources believed to be reliable but has not been verified. NO WARRANTY OR REPRESENTATION, EXPRESS OR IMPLIED, IS MADE AS TO THE CONDITION OF THE PROPERTY (OR PROPERTIES) REFERENCED HEREIN OR AS TO THE ACCURACY OR COMPLETENESS OF THE INFORMATION CONTAINED HEREIN, AND SAME IS SUBMITTED SUBJECT TO ERRORS, OMISSIONS, CHANGE OF PRICE, RENTAL OR OTHER CONDITIONS, WITHDRAWAL WITHOUT NOTICE, AND TO ANY SPECIAL LISTING CONDITIONS IMPOSED BY THE PROPERTY OWNER(S). ANY PROJECTIONS, OPINIONS OR ESTIMATES ARE SUBJECT TO UNCERTAINTY AND DO NOT SIGNIFY CURRENT OR FUTURE PROPERTY PERFORMANCE.



FOR LEASE

169 NORTH BUSINESS CENTER

8400 Wyoming Ave, Brooklyn Park, MN

27,706 SF AVAILABLE



PROPERTY FEATURES

BUILDING SIZE	145,800 SF
YEAR BUILT	2015
LAND AREA	11.8 acres
CLEAR HEIGHT	24'

SPACE FEATURES

AVAILABLE SIZE	1,993 SF Office 25,713 SF Warehouse 27,709 SF Total
LOADING	7 docks
COLUMN SPACING	40' x 40'
AVAILABLE DATE	April 1, 2026
LEASE RATES	Negotiable
2026 TAX & CAM	\$5.17 PSF Total



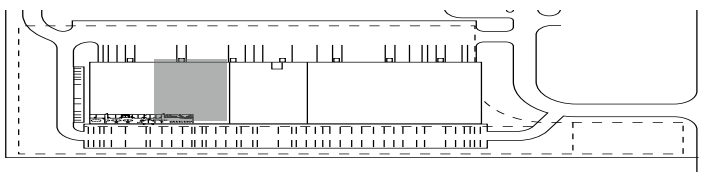
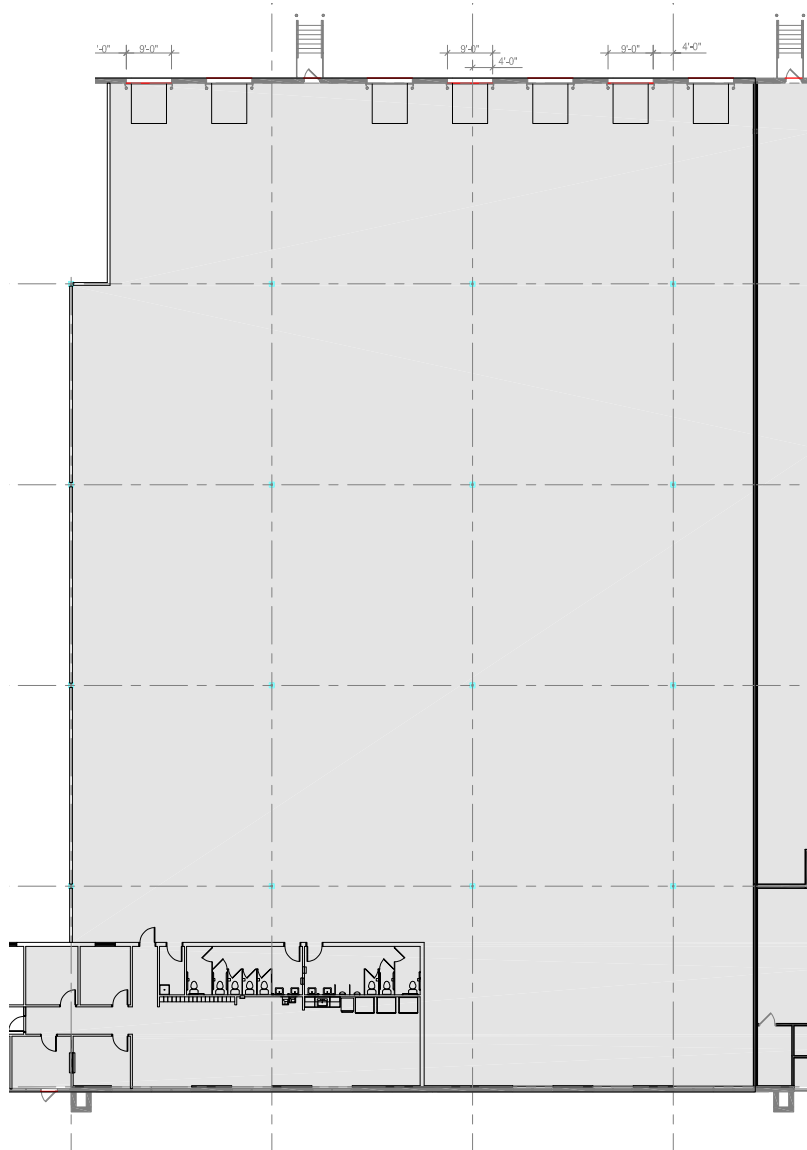
FOR LEASE

169 NORTH BUSINESS CENTER

8400 Wyoming Ave, Brooklyn Park, MN

FLOOR PLAN

1,993 SF Office
25,713 SF Warehouse
27,706 SF Total



**CUSHMAN &
WAKEFIELD**