

301 N WHISMAN

MOUNTAIN VIEW, CALIFORNIA

FOR LEASE
17,100 SF CLASS A
R&D/LIFE SCIENCE BUILDING



SAND HILL PROPERTY COMPANY



301 N WHISMAN

- Recently renovated R&D/Life Science interiors
- Extensive glassine
- Class A stand-alone identity with signage
- Plug-n-play office areas
- Various labs include wet lab
- CDA & CO2 pipes & plumbing
- Power service of 1,200 amps at 277/480 volts
- New HVAC units serving house air with an additional 26 tons dedicated to labs/server rooms
- Showers
- 21 EV Charging stations



INNOVATION ANCHORED IN

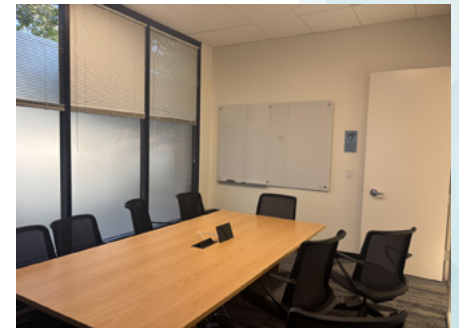
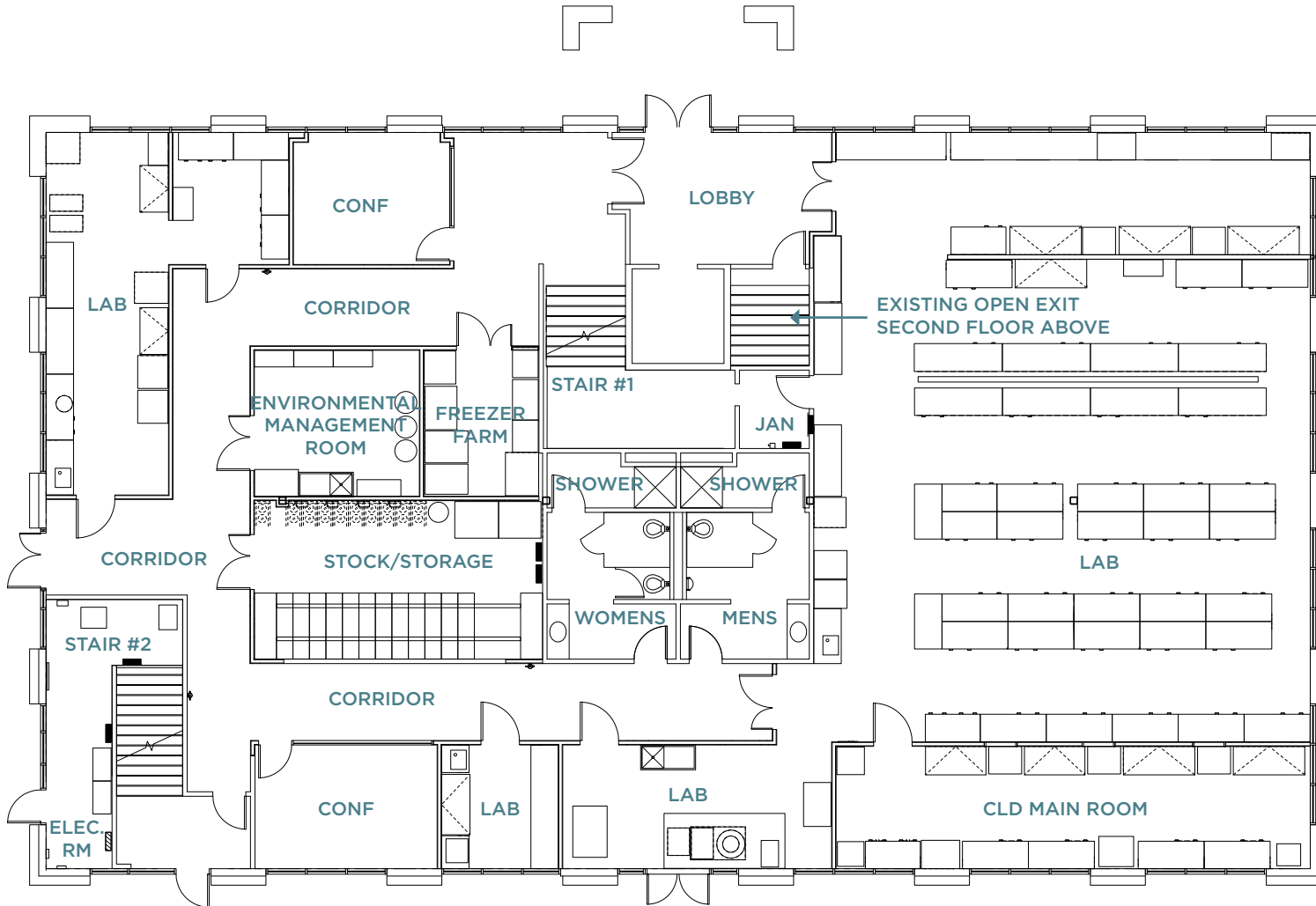
MOUNTAIN VIEW

301 N Whisman offers a rare opportunity to lease a recently renovated R&D/Life Science building in a prime Mountain View location. This two-story, 17,100 SF property delivers high performance infrastructure and modern build out ideal for technology, life science, and other R&D users. The building provides adaptable space for R&D uses with supporting life science infrastructure. With easy access to Caltrain via the nearby VTA light rail, MVGO Shuttle, major freeways, and a thriving network of tech neighbors, this property blends connectivity, flexibility, and functionality to support your next phase of growth.



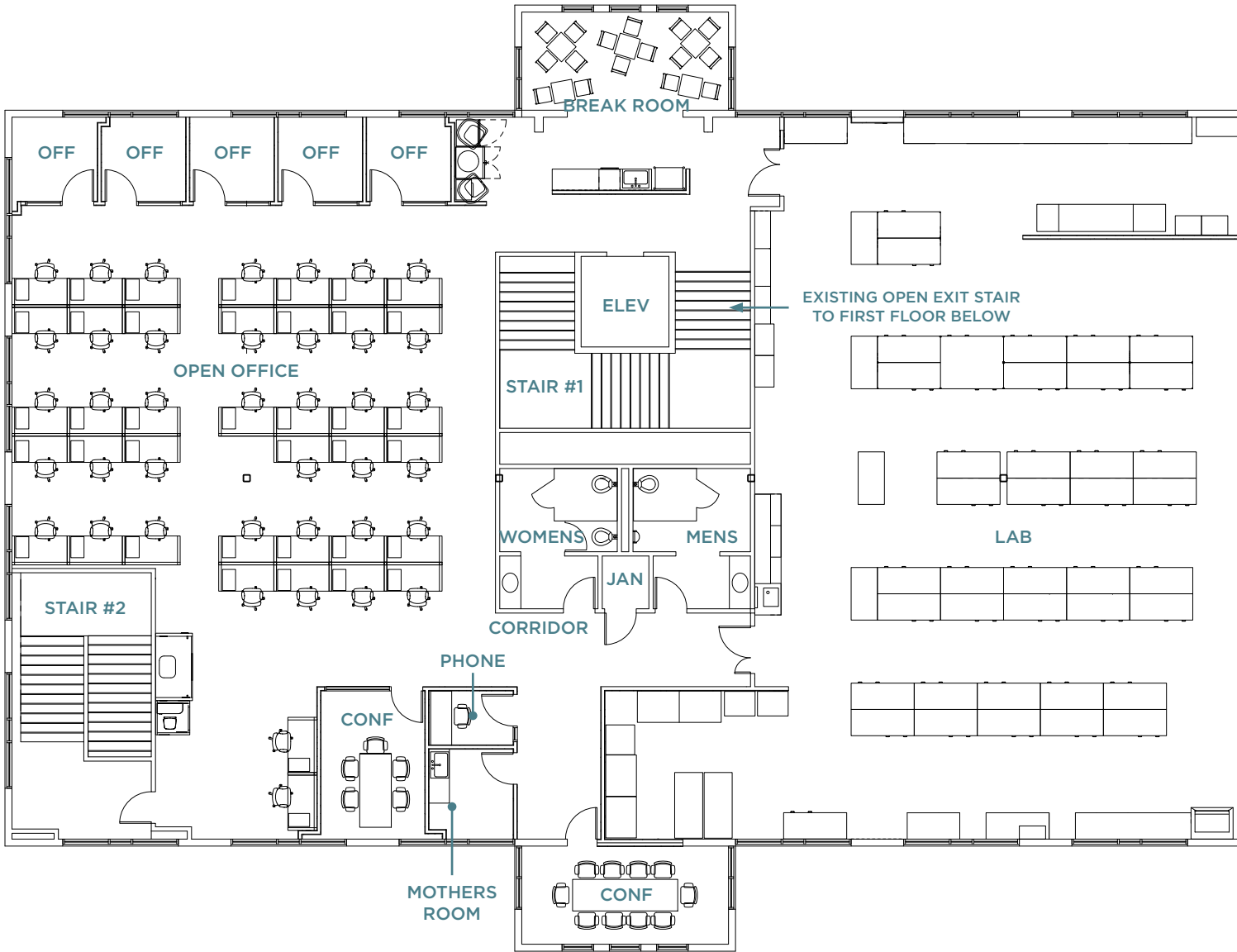
FLOORPLAN

1ST FLOOR



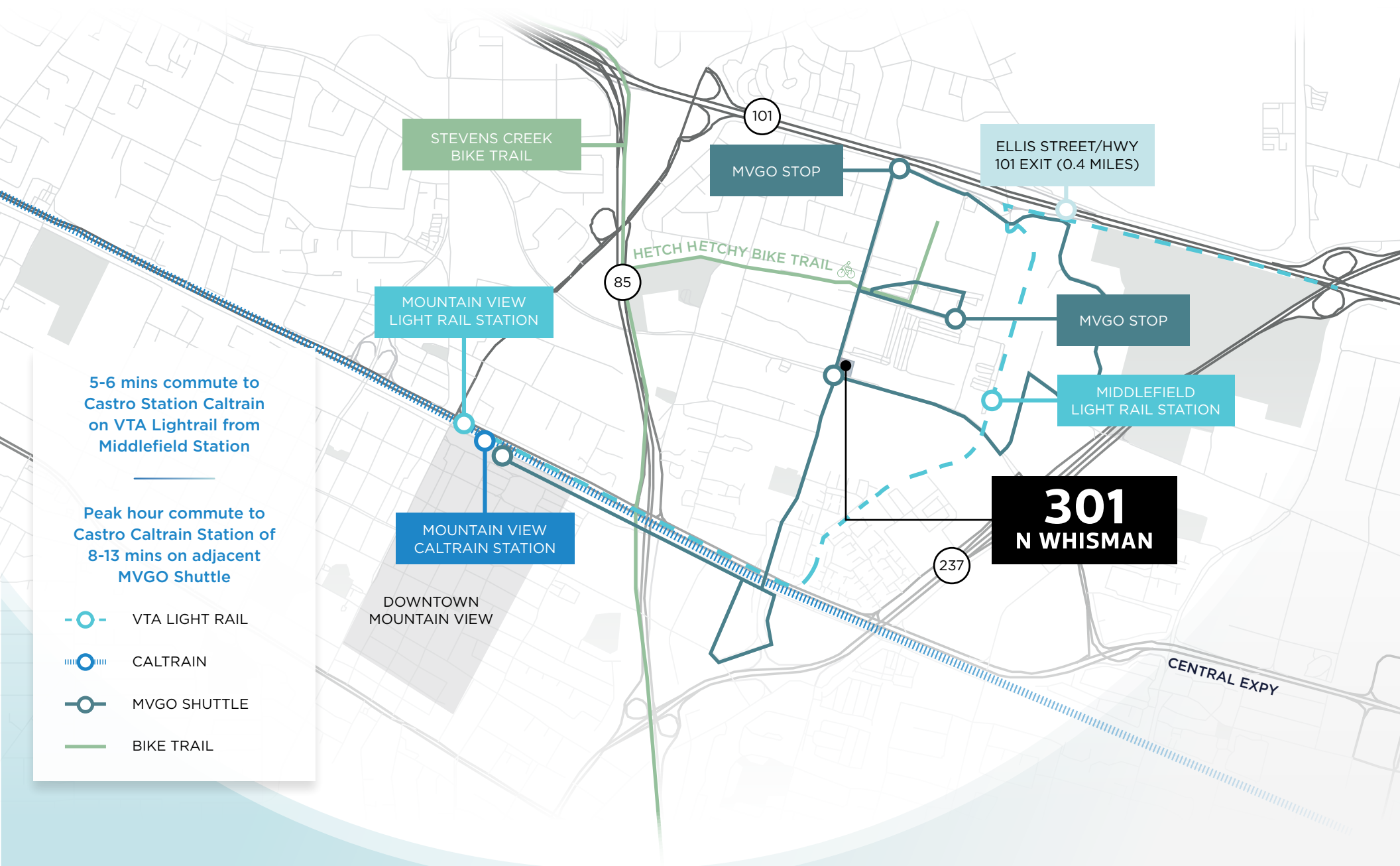
FLOORPLAN

2ND FLOOR







MAP

TRANSPORTATION



5-6 mins commute to Castro Station Caltrain on VTA Lightrail from Middlefield Station

Peak hour commute to Castro Caltrain Station of 8-13 mins on adjacent MVGO Shuttle

-  VTA LIGHT RAIL
-  CALTRAIN
-  MVGO SHUTTLE
-  BIKE TRAIL

MAP

AMENITIES

DOWNTOWN MOUNTAIN VIEW

- | | |
|------------------------|-----------------------|
| Little Sheep | Molly Magees |
| Vaso Azzurro | Kappo Nami Nami |
| Oren's Hummus | Mantra Indian |
| Blue Line Pizza | Crepevine |
| Olympus Caffè | New Mongolian |
| Hong Kong Bistro | BBQ |
| Asian Box | Paris Baguette |
| Ramen Izakaya | Le Plonc Wine Bar |
| Bushido | Cafe Baklava Poke Bar |
| Doppio Zero | Rumble Fish |
| Amarin Thai | Sakoon |
| Shabuway | Flights |
| La Fontaine | Scratch |
| Agave Mexican Bistro | Cascal |
| Ephesus | Sweetgreen |
| Eureka! | Casa Lupe |
| Red Rock Coffee | K-Pot & Grill |
| Alexander's Patisserie | Peet's Coffee |
| Pokeworks | Bean Scene Cafe |
| St. Stephen's Green | |

The Ameswell Hotel

Chef Zhao Bistro
Los Portales

Hampton Inn & Suites

Shana Thai
Taqueria Tres Hermanos

Ramada by Wyndham

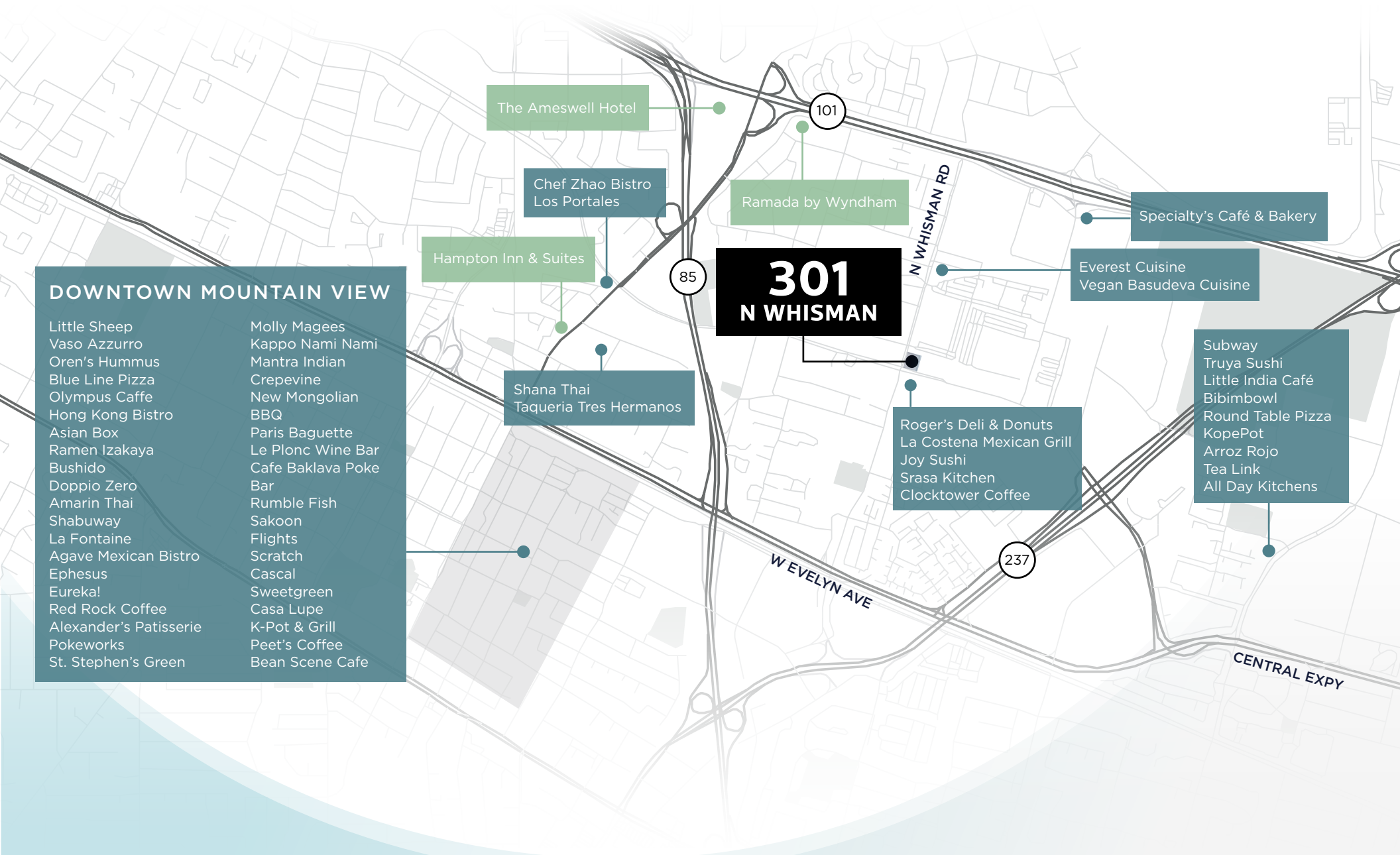
**301
N WHISMAN**

Roger's Deli & Donuts
La Costena Mexican Grill
Joy Sushi
Srasa Kitchen
Clocktower Coffee

Specialty's Café & Bakery

Everest Cuisine
Vegan Basudeva Cuisine

Subway
Truya Sushi
Little India Café
Bibimbowl
Round Table Pizza
KopePot
Arroz Rojo
Tea Link
All Day Kitchens



301 N WHISMAN

MOUNTAIN VIEW, CALIFORNIA

BRANDON BAIN

+1 408 615 3416
brandon.bain@cushwake.com
LIC #01308375

ERIK HALLGRIMSON

+1 408 615 3435
erik.hallgrimson@cushwake.com
LIC #01274540

BEN PAUL

+1 650 401 2123
ben.paul@cushwake.com
LIC #01210872

KATE MYERS

+1 408 502 0196
kate.myers@cushwake.com
LIC #02253804



SAND HILL PROPERTY COMPANY