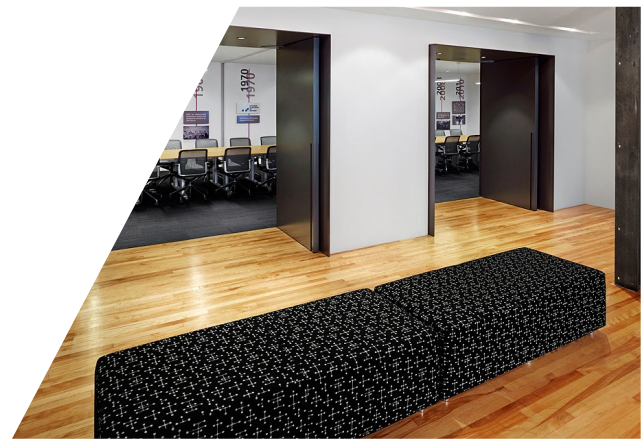




CUSHMAN &
WAKEFIELD

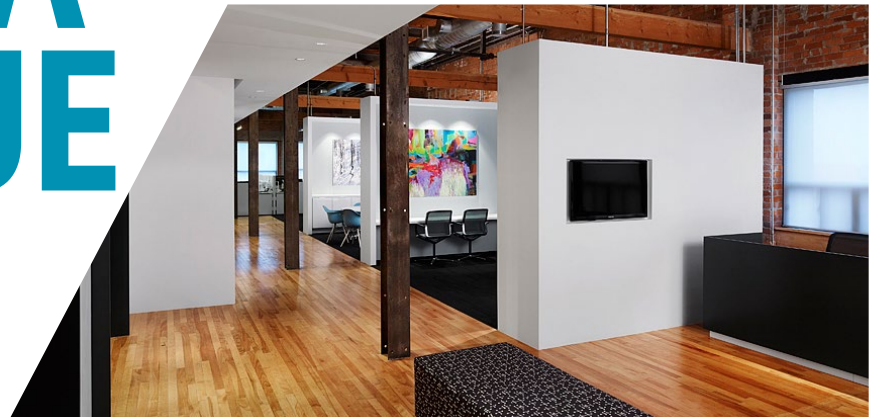


Light-Filled.
Fully Furnished.
Seriously Stylish.



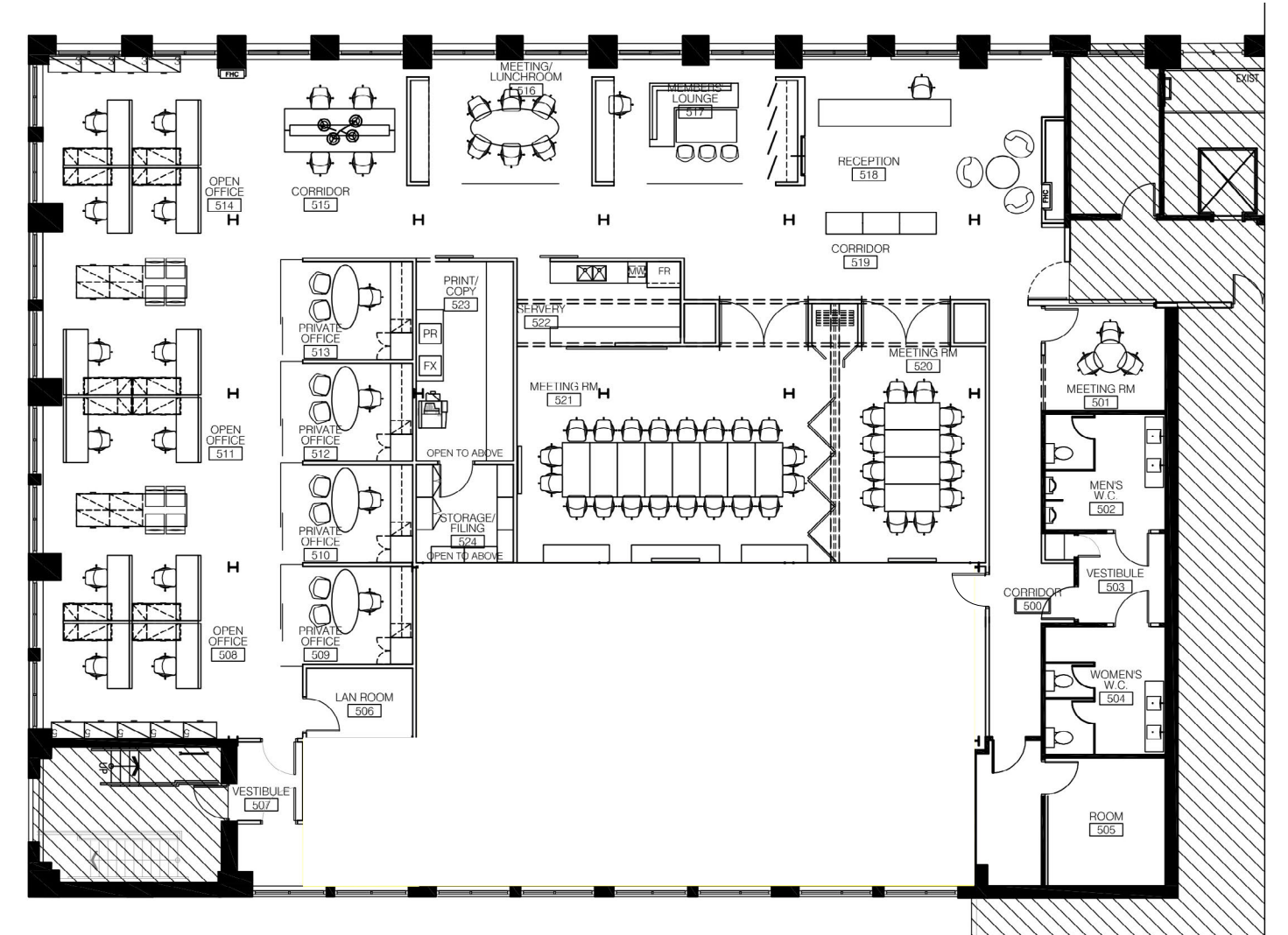
3 HANNA 4 AVENUE

TORONTO, ON M6K 1X1

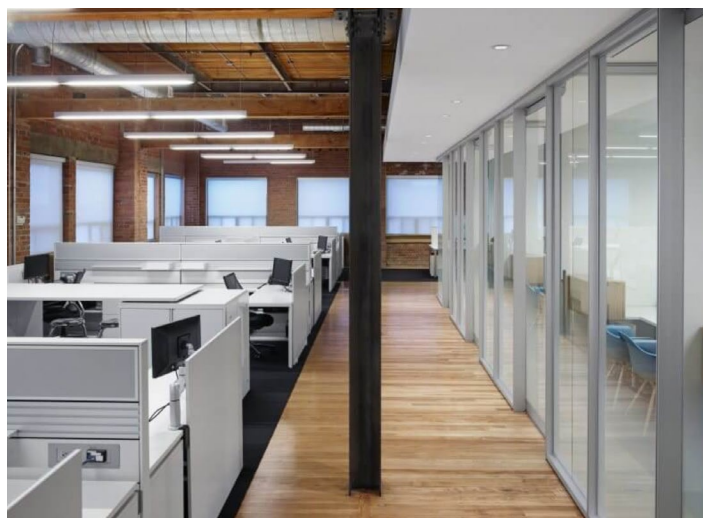
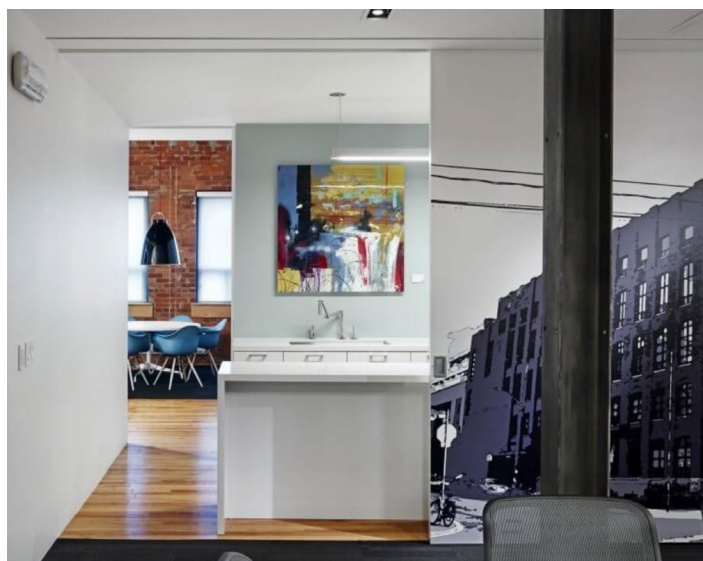


43 HANNA AVENUE

FULL FURNISHED!



FLOOR PLAN



ABOUT THE BUILDING

The Toy Factory Lofts are a residential and commercial loft conversion located at 43 Hanna Avenue in Toronto's Liberty Village. Originally the factory for Canada's oldest toy company, Irwin Toy, the building was converted in 2008.

FEATURES

- Suite: C536 - 5,575 SF
- Basic Rent: \$30.00 psf
- Additional Rent: \$17.73 psf plus in-suite janitorial
- Parking: 3 stalls, 5 days a week at \$200 per month
- Available: May 1, 2026
- Comment: South/West facing allowing for ample natural light

43 HANNA AVENUE



Riley Littlejohn*

Associate Vice President

+1 416 359 2444

+1 905 220 1277

riley.littlejohn@cushwake.com

Clarke Struthers*

Senior Vice President

+1 416 359 2451

+1 647 393 6385

clarke.struthers@cushwake.com

161 Bay Street, Suite 1500

Toronto, ON M5J 2S1

+1 416 862 0611

cushmanandwakefield.com

