



DOWNTOWN BOISE OFFICES FOR LEASE



THE EAGLES CENTER BLDG.

223 North 6th Street
Boise, Idaho 83702

**281 - 846 SF
AVAILABLE**

PROPERTY HIGHLIGHTS

Suite 40	719 SF - \$575/Month
Suite 200	281 SF - \$550/Month
Suite 220	317 SF - \$500/Month
Suite 317	846 SF - \$1,200/month
Service Type	Full Service Including Janitorial & Utilities
Building Size	30,000 SF ± Surrounded by Street Parking & Public Garages
Parking	
Zoning	City of Boise-C-5/HD/C
Parcel #	R1013002810
Lock Box	No, Spaces Shown by Appointment Only



JENNIFER MCENTEE

Senior Director
Office | Capital Markets
+1 208 287 9495
jennifer.mcentee@cushwake.com

BREE WELLS

Director
Office | Capital Markets
+1 208 287 9492
bree.wells@cushwake.com

BRAYDON TORRES

Associate
Office | Capital Markets
+1 208 207 9485
braydon.torres@cushwake.com

999 W MAN ST. SUITE 1300, BOISE, IDAHO 83702
WWW.CUSHWAKE.COM

©2025 Cushman & Wakefield. All rights reserved. The information contained in this communication is strictly confidential. This information has been obtained from sources believed to be reliable but has not been verified. No warranty or representation, express or implied, is made as to the condition of the property (or properties) referenced herein or as to the accuracy or completeness of the information contained herein, and same is submitted subject to errors, omissions, change of price, rental or other conditions, withdrawal without notice, and to any special listing conditions imposed by the property owner(s). Any projections, opinions or estimates are subject to uncertainty and do not signify current or future property performance.



THE EAGLES CENTER BLDG.

223 North 6th Street, Boise, Idaho 83702

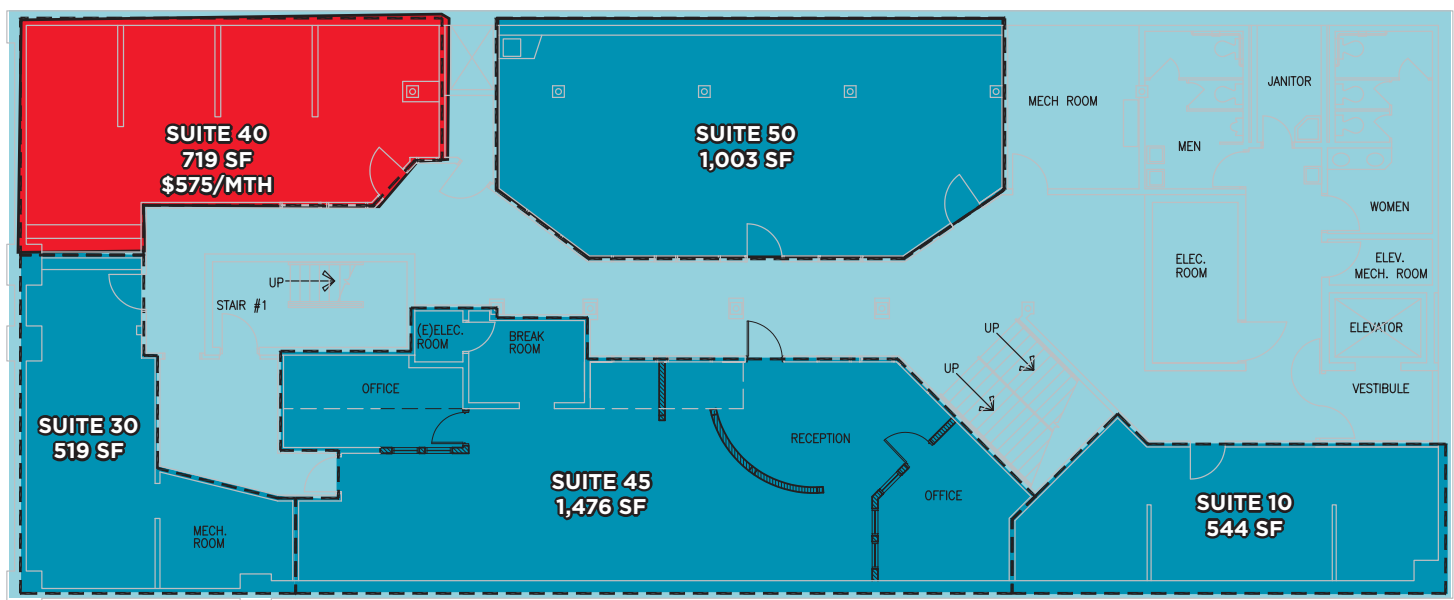
FOR LEASE - 281 - 846 SF



LISTING FEATURES

- Prime Downtown Boise Location at the Corner of 6th & Idaho
- Beautiful Historic Landmark Building
- Short Term Leases Available, Contact Agent for Details
- Existing Tenants Include Java Coffee & Spa Urbana
- Spaces & Lobby Area are Newly Remodeled
- Secure Building with After Hours Access
- Full Service Lease Including Janitorial & Utilities
- Tenants are Allowed Access to a Shared Conference Room
- Space Showings By Appointment Only, Contact Agent: Jennifer McEntee

LOWER LEVEL



JENNIFER MCENTEE

Senior Director
Office | Capital Markets
+1 208 287 9495
jennifer.mcentee@cushwake.com

BREE WELLS

Director
Office | Capital Markets
+1 208 287 9492
bree.wells@cushwake.com

BRAYDON TORRES

Associate
Office | Capital Markets
+1 208 207 9485
braydon.torres@cushwake.com

999 W Main Street, Ste 1300
Boise, Idaho 83702
Main +1 208 287 9500
Fax +1 208 287 9501
cushmanwakefield.com



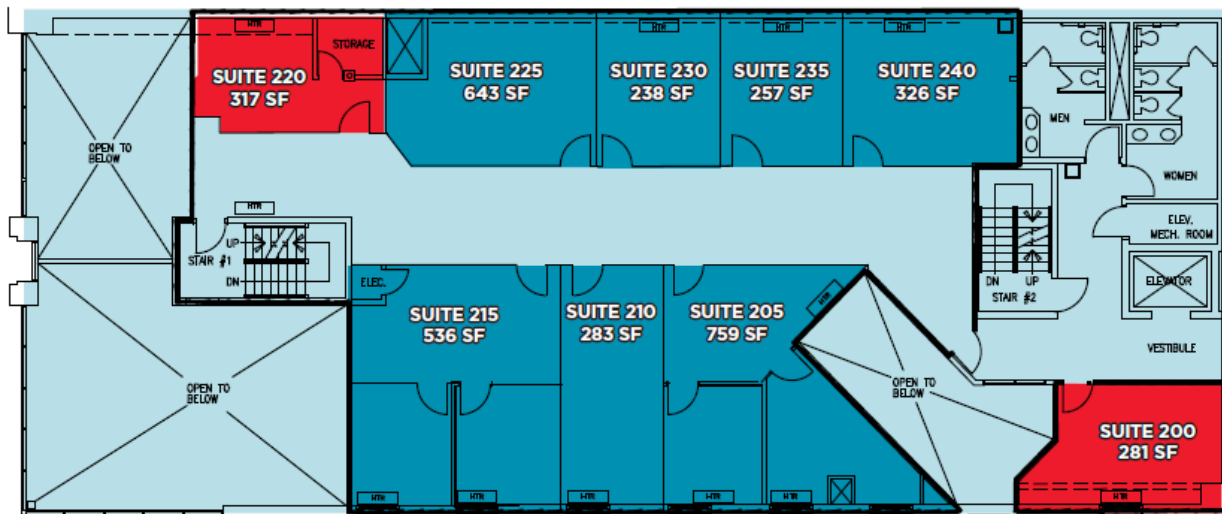
THE EAGLES CENTER BLDG.

223 North 6th Street, Boise, Idaho 83702

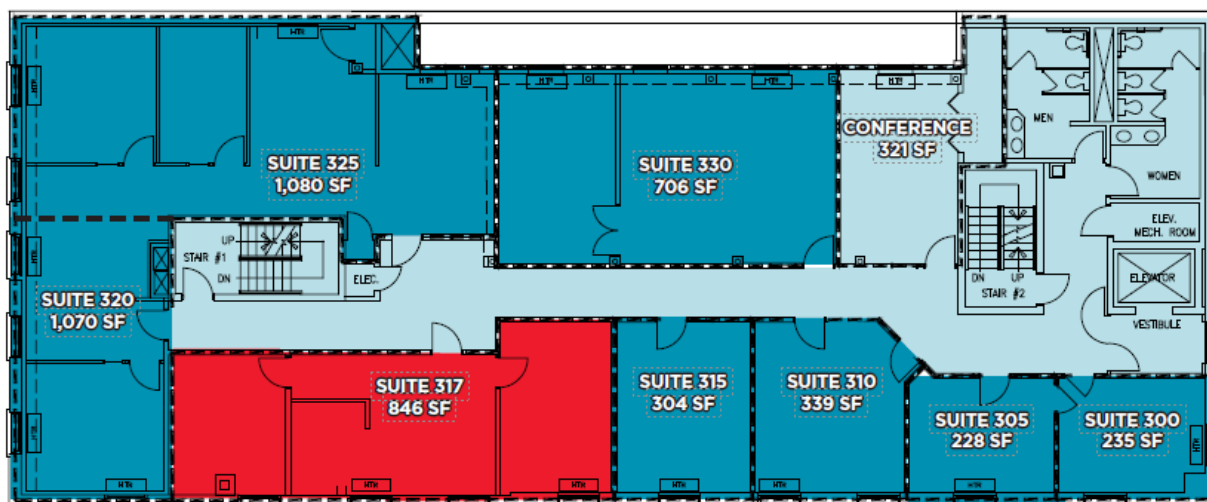
FOR LEASE - 281 - 846 SF



SECOND FLOOR



THIRD FLOOR



JENNIFER MCENTEE

Senior Director
Office | Capital Markets
+1 208 287 9495
jennifer.mcentee@cushwake.com

BREE WELLS

Director
Office | Capital Markets
+1 208 287 9492
bree.wells@cushwake.com

BRAYDON TORRES

Associate
Office | Capital Markets
+1 208 207 9485
braydon.torres@cushwake.com

999 W Main Street, Ste 1300
Boise, Idaho 83702
Main +1 208 287 9500
Fax +1 208 287 9501
cushmanwakefield.com



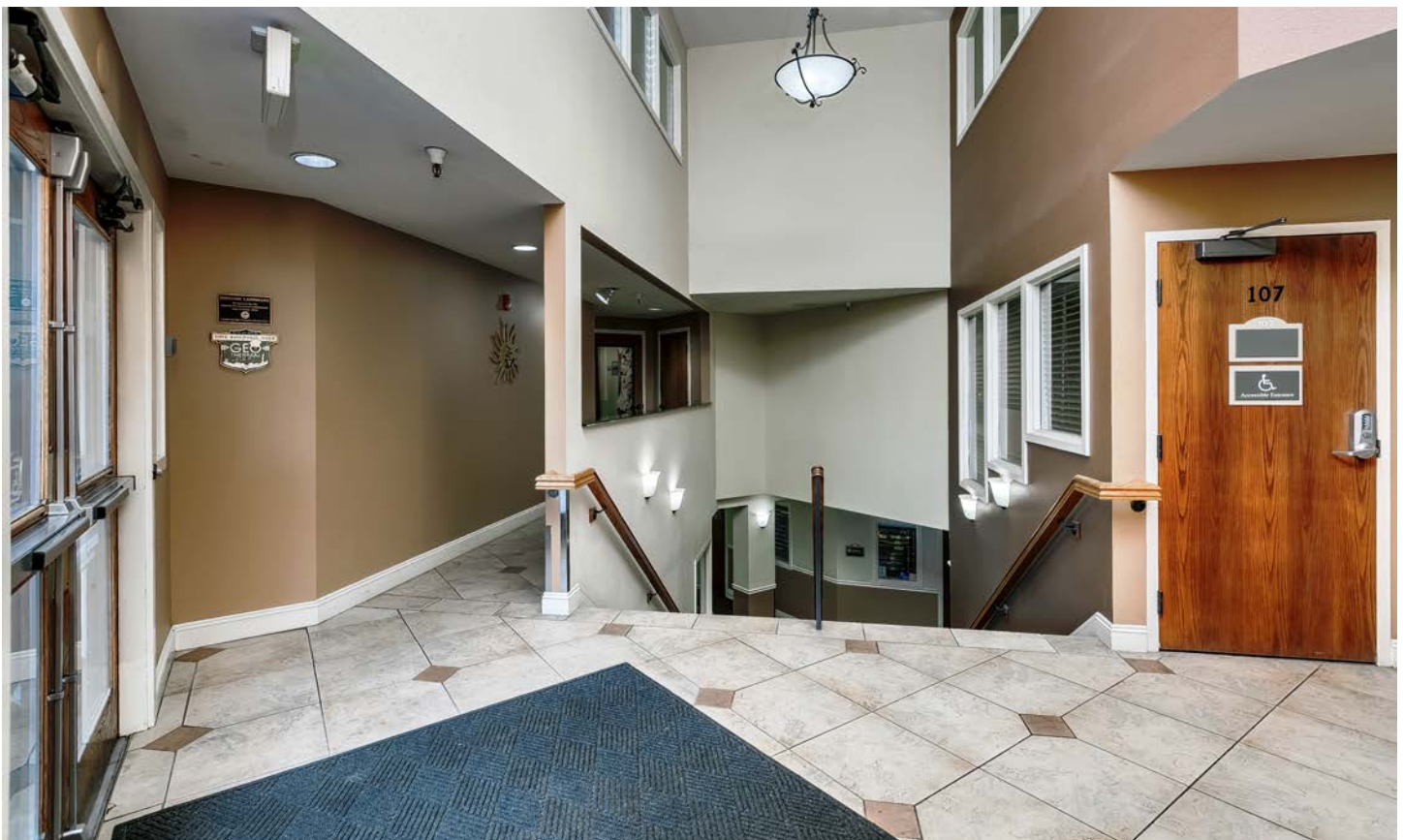
THE EAGLES CENTER BLDG.

223 North 6th Street, Boise, Idaho 83702

FOR LEASE - 281 - 864 SF



LISTING PHOTOS



JENNIFER MCENTEE

Senior Director
Office | Capital Markets
+1 208 287 9495
jennifer.mcentee@cushwake.com

BREE WELLS

Director
Office | Capital Markets
+1 208 287 9492
bree.wells@cushwake.com

BRAYDON TORRES

Associate
Office | Capital Markets
+1 208 207 9485
braydon.torres@cushwake.com

999 W Main Street, Ste 1300
Boise, Idaho 83702
Main +1 208 287 9500
Fax +1 208 287 9501
cushmanwakefield.com



THE EAGLES CENTER BLDG.

223 North 6th Street, Boise, Idaho 83702

FOR LEASE - 281 - 846 SF



SURROUNDING AMENITIES



Restaurants in Close Proximity

- The Melting Pot
- Flatbread Pizzeria
- Jimmy John's Sandwiches
- Fork
- Bardenay
- Reef

Businesses in Close Proximity

- Boise City Hall
- Idaho State Capital
- Downtown Boise Association
- St Luke's Medical Center
- Elk's Rehabilitation Hospital
- Basque Cultural Center

JENNIFER MCENTEE

Senior Director
Office | Capital Markets
+1 208 287 9495
jennifer.mcentee@cushwake.com

BREE WELLS

Director
Office | Capital Markets
+1 208 287 9492
bree.wells@cushwake.com

BRAYDON TORRES

Associate
Office | Capital Markets
+1 208 207 9485
braydon.torres@cushwake.com

999 W Main Street, Ste 1300
Boise, Idaho 83702
Main +1 208 287 9500
Fax +1 208 287 9501
cushmanwakefield.com



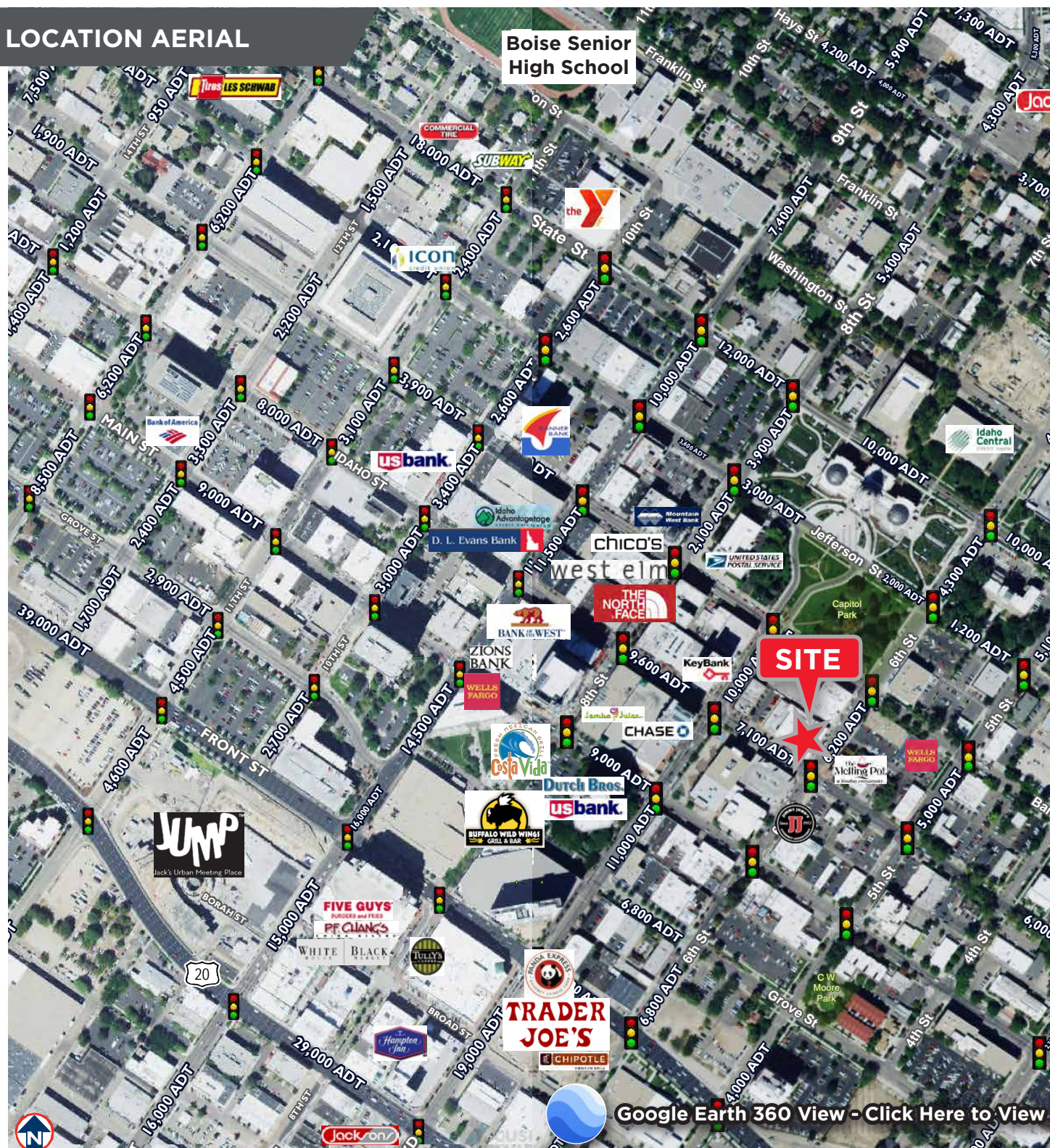
THE EAGLES CENTER BLDG.

223 North 6th Street, Boise, Idaho 83702

FOR LEASE - 281 - 864 SF



LOCATION AERIAL





THE EAGLES CENTER BUILDING

223 North 6th Street, Boise, Idaho 83702

FOR LEASE -281 - 846 SF



- EXISTING HOTELS**
- 1 RED LION - 182 ROOMS
 - 2 BUDGET INN - 44 ROOMS
 - 3 HOTEL 43 - 112 ROOMS
 - 4 HAMPTON INN - 186 ROOMS
 - 5 TOWNPLACE SUITES - 121 ROOMS
 - 6 RESIDENCE INN - 104 ROOMS
 - 7 THE MODERN - 41 ROOMS
 - 8 SAFARI INN - 103 ROOMS
 - 9 THE GROVE - 234 ROOMS
 - 10 COURTYARD - 162 ROOMS
 - 11 THE ANNIVERSARY INN - 40 ROOMS
 - 12 MARRIOTT RESIDENCE INN - 185 ROOMS
 - 13 HYATT PLACE - 150 ROOMS
 - 14 INN AT 500 CAPITAL - 111 ROOMS
 - 15 HILTON GARDEN INN - 175 ROOMS
 - 16 HOME2SUITES BY HILTON - 140 ROOMS

- EVENT CENTERS**
- 1 CONVENTION CENTER EXPANSION
40,000 SF
 - 2 JUMP - \$70 MIL URBAN ART CENTER
 - 3 BOISE CONVENTION CENTER
200+ EVENTS 120,000 PEOPLE YEARLY
 - 4 CENTURY LINK ARENA
300,000 PEOPLE PER YEAR

- NEW DEVELOPMENTS**
- 1 CITY CENTER PLAZA
CLEARWATER ANALYTICS
400+ EMPLOYEES
BSU COMPUTER SCIENCE PROGRAM
53,549 SQ FT, 2 FLOORS
 - 2 SIMPLOT HQ - 800 EMPLOYEES
 - 3 DOWNTOWN RESIDENTIAL 600+ UNITS
 - 4 132,000 SF OFFICE BUILDING

- DOWNTOWN BY THE NUMBERS**
- 94,223 WORKERS
 - 91,199 PEOPLE LIVE WITHIN 3 MILES
 - 17,000 PUBLIC PARKING SPACES
 - 725,168 MSA POPULATION
 - \$66,310 AVG. H.H. INCOME

