

FOR SUBLEASE 71,655 SF INDUSTRIAL

1801 NORMANTOWN ROAD ROMEOVILLE, ILLINOIS



CONNOR NIEGO

Senior Associate
+1 708 870 1531
connor.niego@cushwake.com

RYAN KLINK

Managing Director
+1 847 518 3211
ryan.klink@cushwake.com

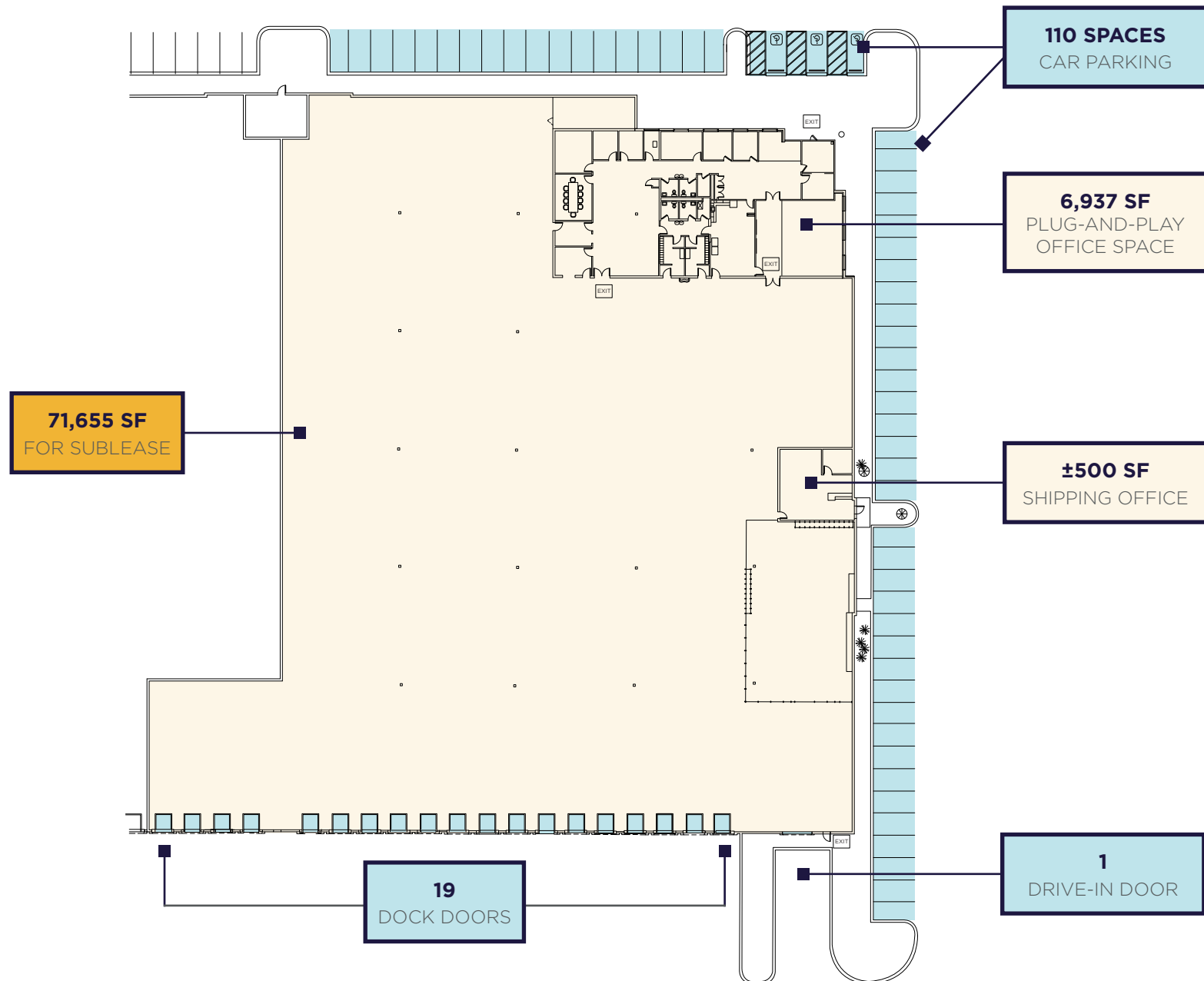


Sublease Highlights



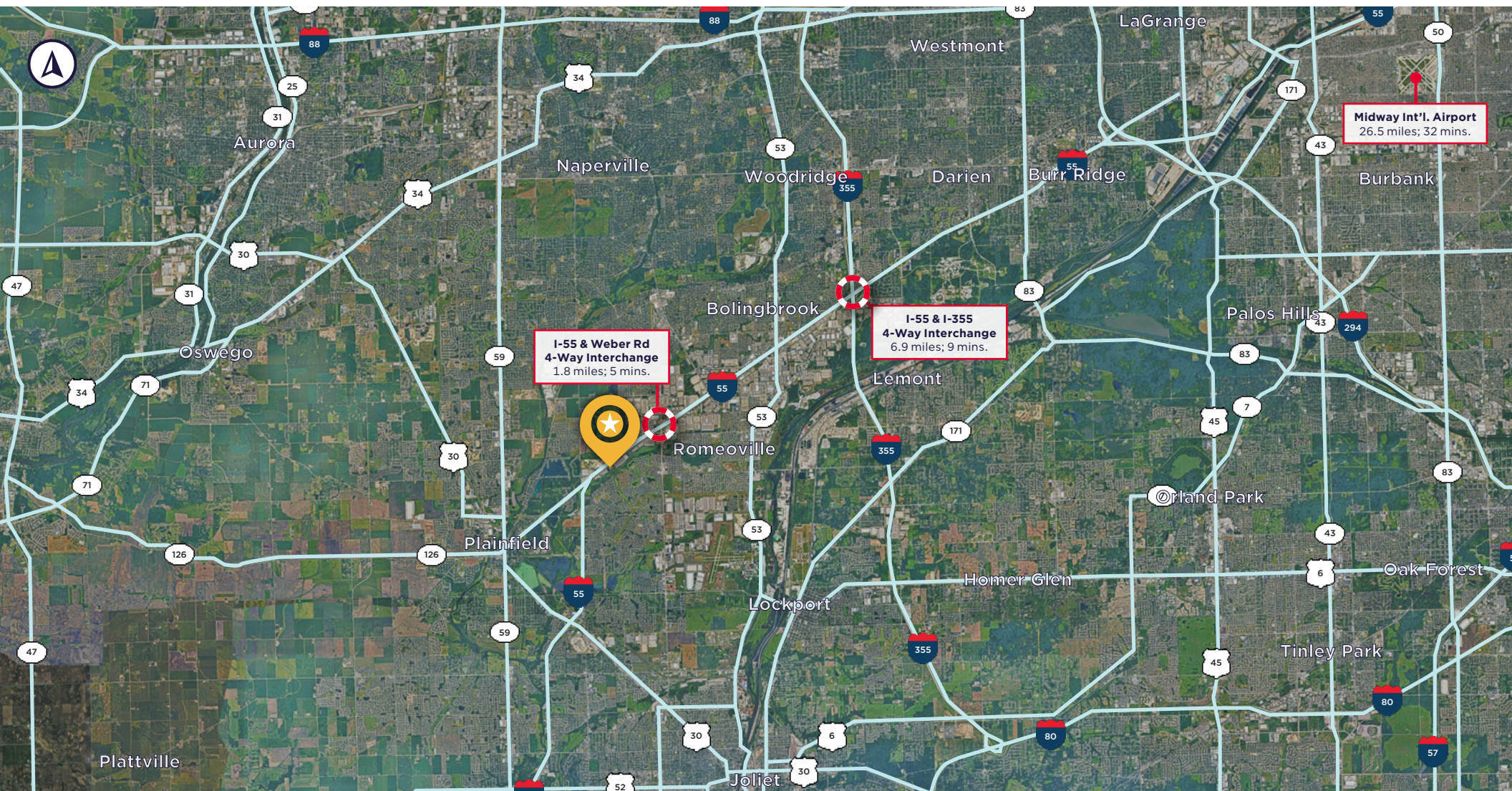
Building Size:	136,607 SF
Sublease Space:	71,655 SF
Office Space:	6,937 SF
Shipping Office:	±500 SF
Available:	Immediate
Sublease Exp.:	May 31, 2032
Clear Height:	30'
Loading:	<ul style="list-style-type: none">• 19 docks• 1 drive-in door
Crane:	4-ton crane in place
Car Parking:	110 spaces
Power:	Heavy; 2,000a/277-480V, 3p
Sprinkler System:	ESFR
Highlights:	<ul style="list-style-type: none">• I-55 frontage (106,000 VPD)• Near major routes, including I-55, I-355 & I-80• Ample loading• 4-ton crane in place• Plug-and-play office space• Well maintained property and space

Floor Plan





FOR SUBLEASE 71,655 SF INDUSTRIAL



CONNOR NIEGO

Senior Associate
+1 708 870 1531
connor.niego@cushwake.com

RYAN KLINK

Managing Director
+1 847 518 3211
ryan.klink@cushwake.com

