

947 WEST STATE ROAD 32
WESTFIELD, IN

Trailside

BUSINESS PARK



High End Industrial For Lease



WHERE COMMERCE ————— Meets Community

TRAILSIDE BUSINESS PARK delivers four modern industrial buildings across over 26 acres in Westfield, Indiana. Just minutes from US-31 and SR-32, the development seamlessly connects tenants to the greater Indianapolis region and more than half the U.S. population in a single day. With high-quality design and direct access to the Midland Trace Trail, Trailside Business Park combines a central, distribution-friendly location with a community recognized for its quality of life.



PROPERTY HIGHLIGHTS

Four (Approx. 71,054 – 94,303 SF) buildings

Over 26 acres in Westfield, IN

Connected to Midland Trace Trail and Westfield's 115-mile trail network

Direct access to US-31 and SR-32

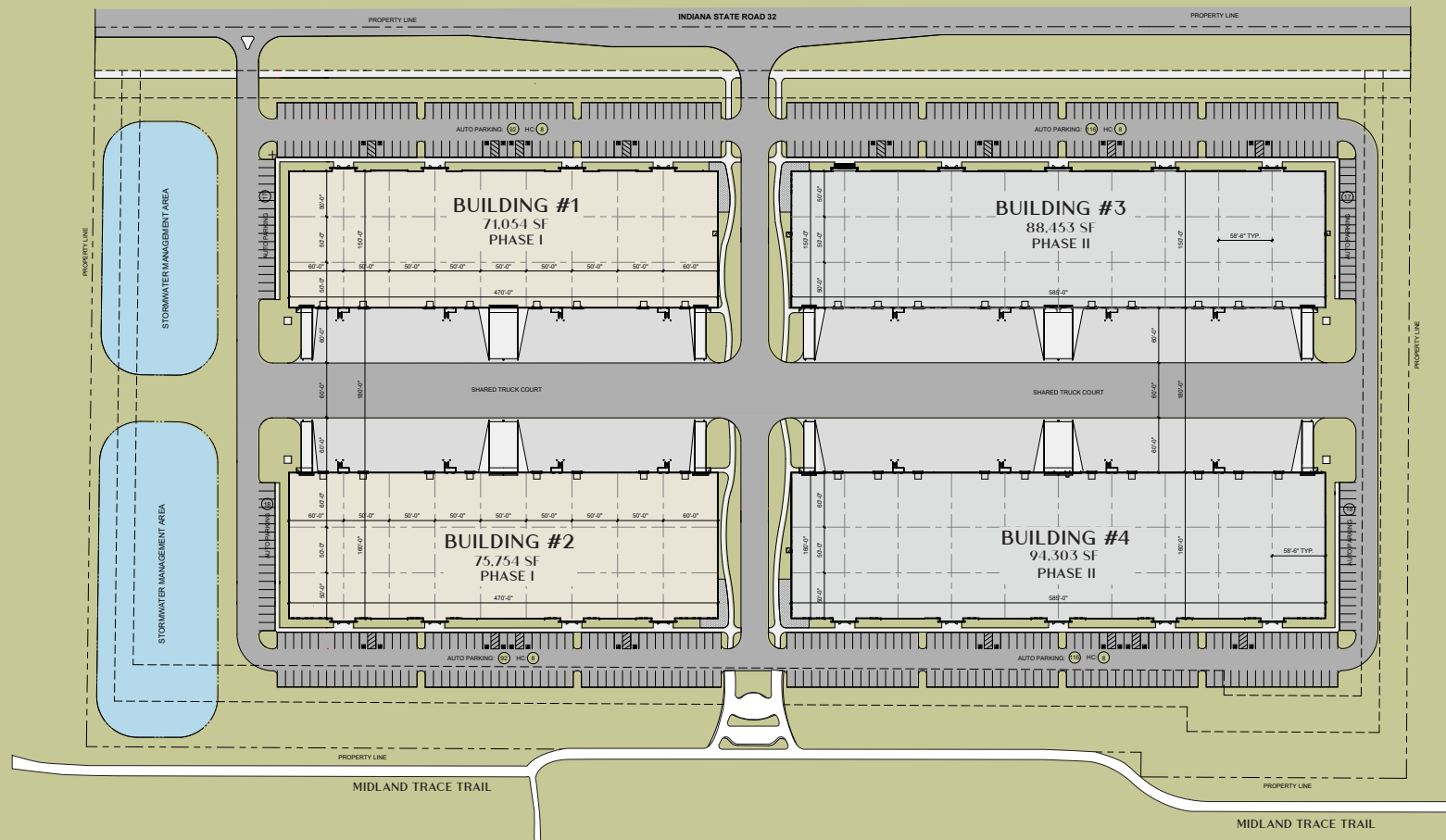
Minutes from Grand Park Sports Campus

Ideal for biotech, large-scale users and diverse industries

Surrounded by restaurants, services and hotels

Westfield is the fastest growing municipality in Indiana

SITE Plan

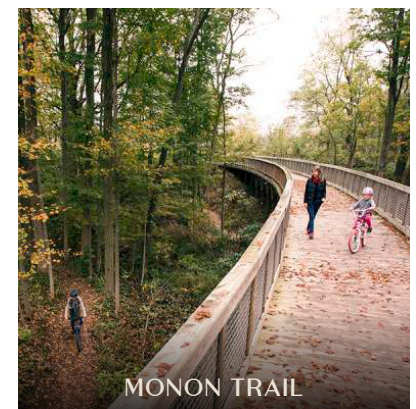
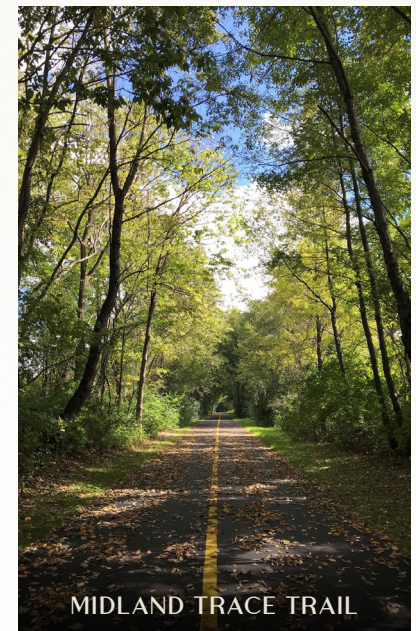
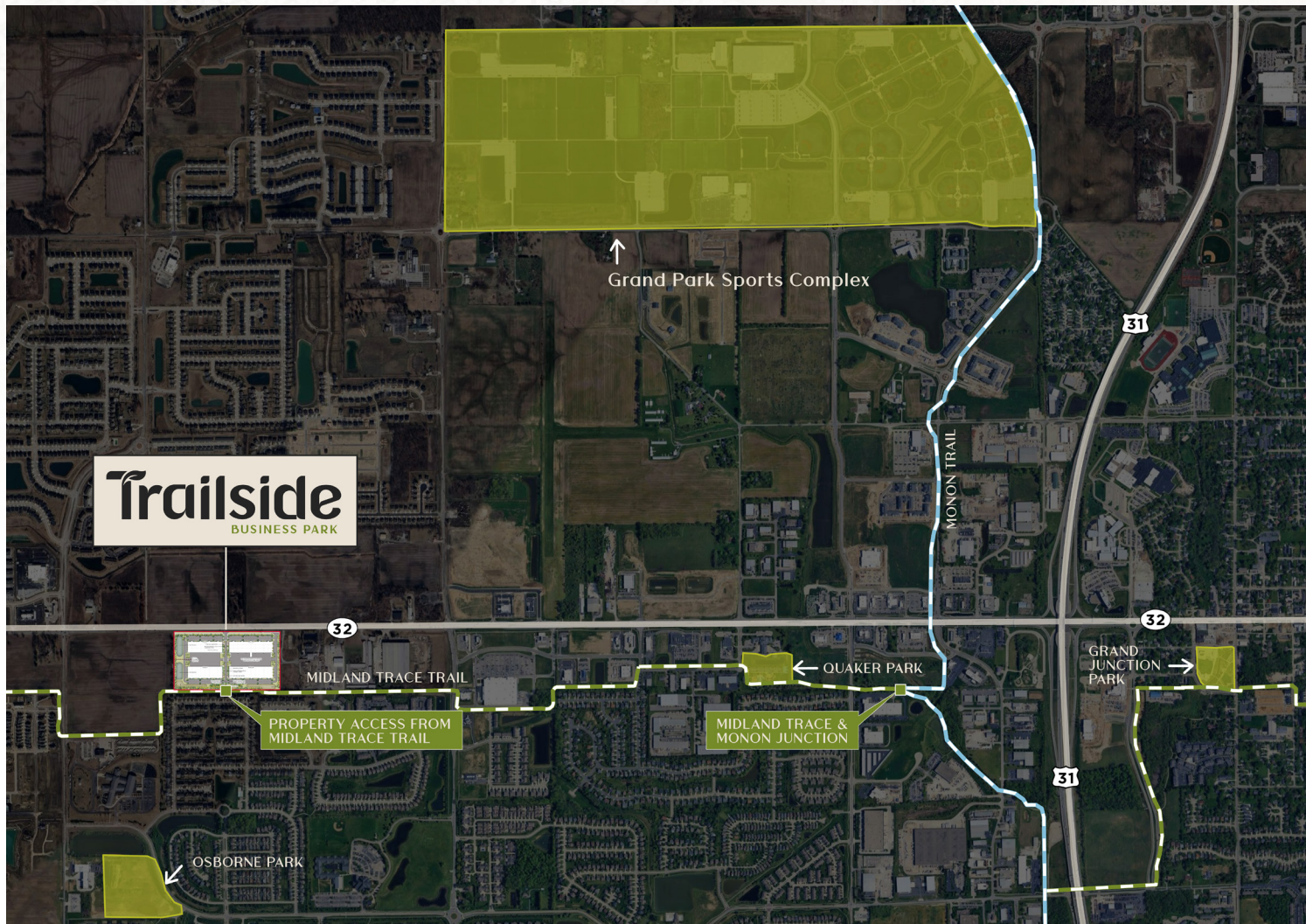


BUILDING ONE & TWO

SPACE AVAILABLE:	Building 1: 71,054 SF (470' X 150') Building 2: 75,754 SF (470' X 160')	HVAC:	Natural gas fired unit heaters 55°F average indoor air temperature at 64°F outdoor air temperature
SITE DIMENSIONS:	Approx. 12.5 acres (Phase I)	SPRINKLERS:	ESFR
CLEAR HEIGHT:	28' minimum clear height	BAY SPACING	50' x 50' (typical) 60' x 50' (end walls)
STRUCTURE:	Slab-on-grade - 6", 4,000 psi (compressive)/ 650 psi (flexural) over 4" stone base	ROOF:	45-mil mechanically fastened single ply over 5.2" of polyisocyanurate insulation (R-30 LTTR)
OVERHEAD DRIVE-IN DOORS:	Four 12' x 14' motor operated	POWER:	Up to 3,000A - 480/277V
DOCK DOORS:	Ten dock doors with 35,000 pound levelers	LIGHTING:	LED with motion sensors to provide for an initial average lighting level of 35' foot-candles (3' above FFE) assuming an open floor plan
TELEPHONE DATA:	Two - 4" PVC conduits for future connectivity	AUTO PARKING:	122 (Building 1) / 123 (Building 2)
ZONING:	Trailside Business Center PUD		

Connected by Nature

The industrial park sits along the Midland Trace Trail, minutes from Grand Park, and within Westfield's 115-mile trail network, including the Monon Trail, connecting Westfield directly to downtown Indianapolis.



Westfield

AT YOUR DOORSTEP

TRAILSIDE BUSINESS PARK

places tenants in the heart of Westfield, surrounded by restaurants, retail and hotels. From early morning coffee to after-work happy hours, everything you need is just a short drive away.

49

SHOPPING

28

FAST FOOD

16

RESTAURANTS

9

FITNESS

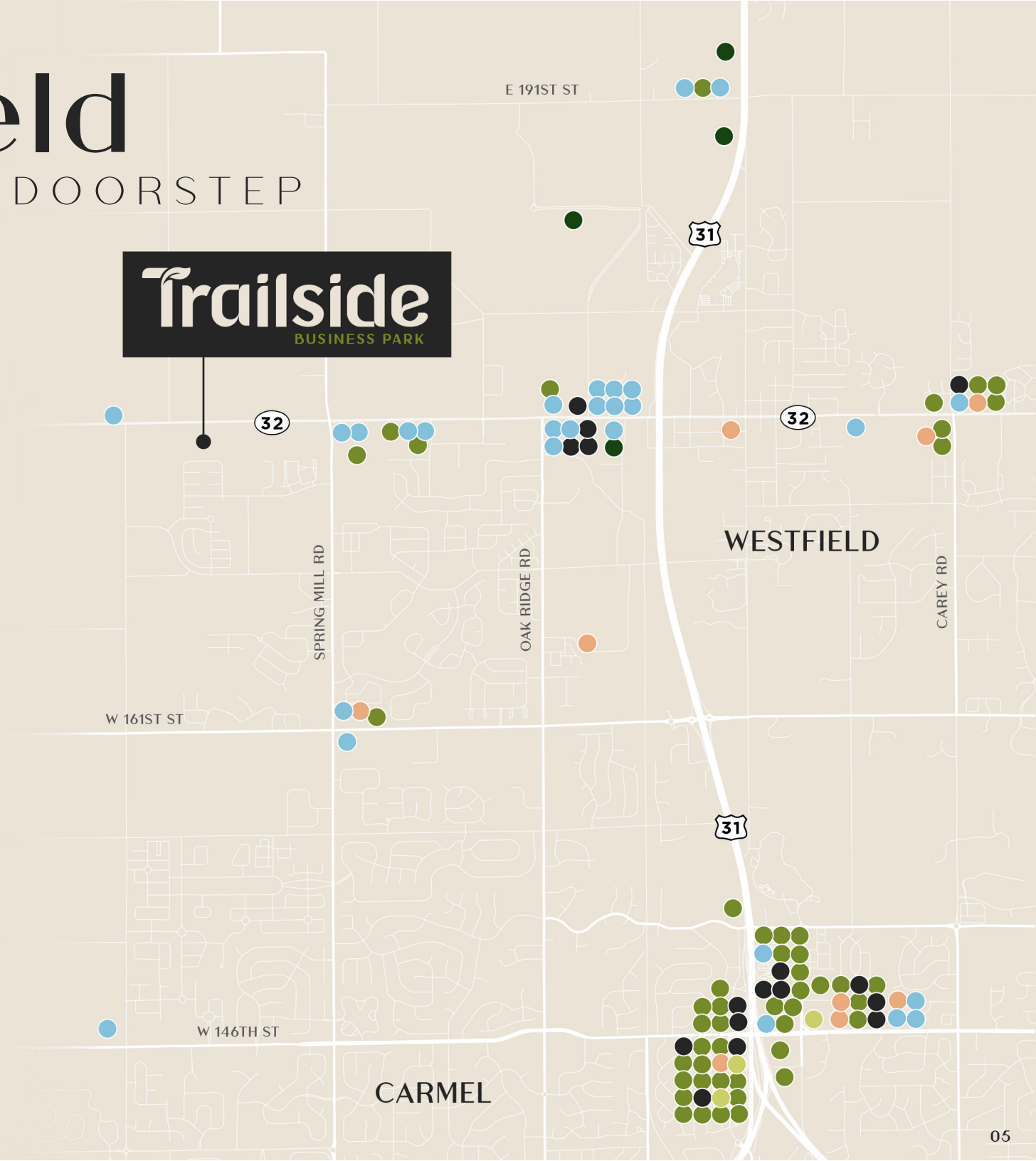
4

HOTELS

4

ENTERTAINMENT

Trailside
BUSINESS PARK



BY THE Numbers

WESTFIELD is ranked among the best small cities in America and top suburbs in Indiana, offering a highly educated workforce, strong household incomes and a community that attracts talent at every level.

#19

Best Places to
Live for Families

– Fortune Well

#7

Safest Cities in
Indiana

– The Home Security
Advisor

7,359

Warehouse
Employees

– 5 mi radius

2.6%

Unemployment
Rate

– 5 mi radius

\$141,791

Median Household
Income

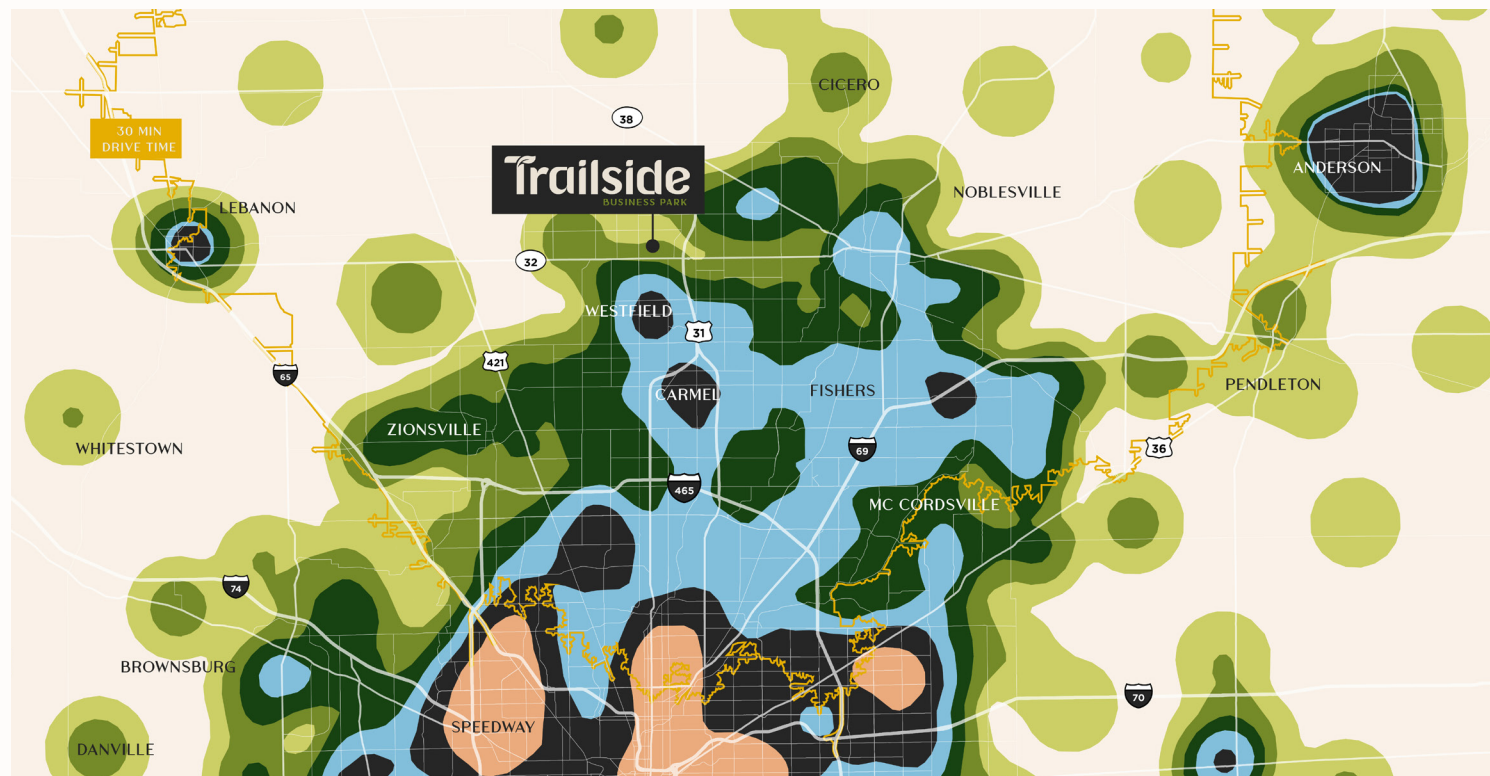
– 5 mi radius

2025 BLUE COLLAR RESIDENT WORKER DENSITY



Low Density

High Density



Access That Delivers

TRAILSIDE BUSINESS PARK

offers seamless access to US-31 and SR-32, connecting tenants to the greater Indianapolis region and placing more than half of the U.S. population within a single day's reach. The location strengthens commuting and distribution, making it an attractive location for biotech and other large-scale users.

DRIVE TIMES

US-31 / SR-32

6 mins

I-465

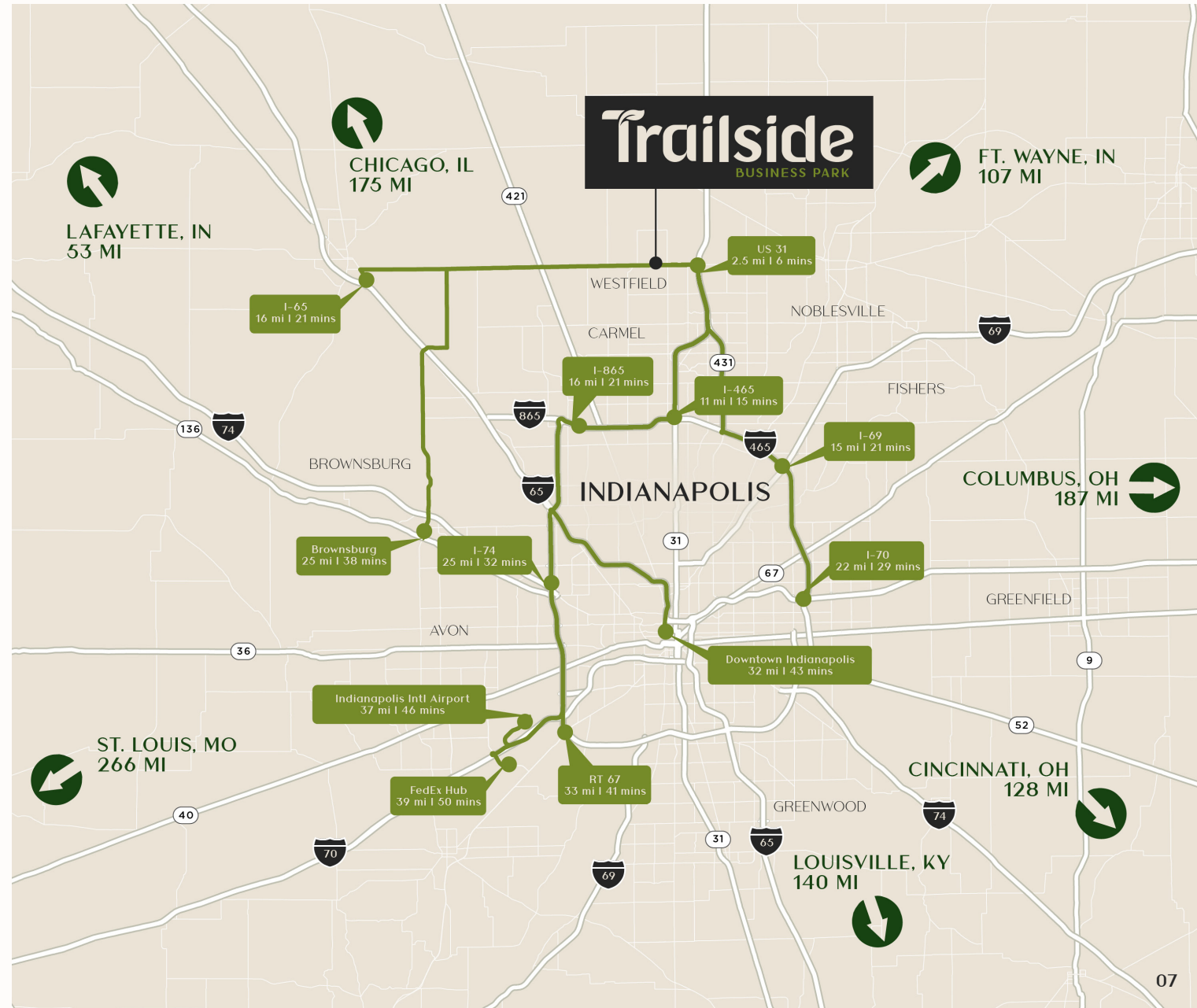
15 mins

Downtown Indianapolis

43 mins

Indianapolis Intl Airport

46 mins



IN GOOD Company

TRAILSIDE BUSINESS PARK

is surrounded by leading employers such as Abbott Labs, AgReliant Genetics, SEP, Portable Diabetes and Aptiv Engineering Laboratory.

These companies highlight Westfield's strengths in bioscience, technology and manufacturing, reinforcing the area as a place where leading employers continue to invest and grow.





Trailside

BUSINESS PARK

FOR MORE INFORMATION, CONTACT:

Ryan Baker

Executive Managing Director

+1 317 352 5428

ryan.baker@cushwake.com

Patrick Lindley

Vice Chair

+1 317 639 0457

patrick.lindley@cushwake.com



©2025 Cushman & Wakefield. All rights reserved. The information contained in this communication is strictly confidential. This information has been obtained from sources believed to be reliable but has not been verified. NO WARRANTY OR REPRESENTATION, EXPRESS OR IMPLIED, IS MADE AS TO THE CONDITION OF THE PROPERTY (OR PROPERTIES) REFERENCED HEREIN OR AS TO THE ACCURACY OR COMPLETENESS OF THE INFORMATION CONTAINED HEREIN, AND SAME IS SUBMITTED SUBJECT TO ERRORS, OMISSIONS, CHANGE OF PRICE, RENTAL OR OTHER CONDITIONS, WITHDRAWAL WITHOUT NOTICE, AND TO ANY SPECIAL LISTING CONDITIONS IMPOSED BY THE PROPERTY OWNER(S). ANY PROJECTIONS, OPINIONS OR ESTIMATES ARE SUBJECT TO UNCERTAINTY AND DO NOT SIGNIFY CURRENT OR FUTURE PROPERTY PERFORMANCE. 10/15/25