

800 California Street
MOUNTAIN VIEW, CA

PRIME DOWNTOWN
OFFICE SPACE FOR LEASE



±8,863 SF



SAND HILL PROPERTY COMPANY



CUSHMAN &
WAKEFIELD

PROPERTY HIGHLIGHTS

MARKET READY INCLUDING
NEW LOBBY

A+ LOCATION ON BEST CORNER
IN DT MOUNTAIN VIEW

OPEN OFFICE WITH
EXCELLENT WINDOW LINE

SINGLE TENANT FLOOR

WALKING DISTANCE TO
CALTRAIN STATION

MULTIPLE PARKING GARAGES WITHIN 1 BLOCK,
INCL. A 405-STALL PARKING STRUCTURE RIGHT
NEXT DOOR

SIGNATURE RESTAURANT [LIMÓN](#),
ANCHORED ON GROUND FLOOR

ON EDGE OF



PEDESTRIAN MALL WITH
ABUNDANT NEARBY WALKABLE
AMENITIES

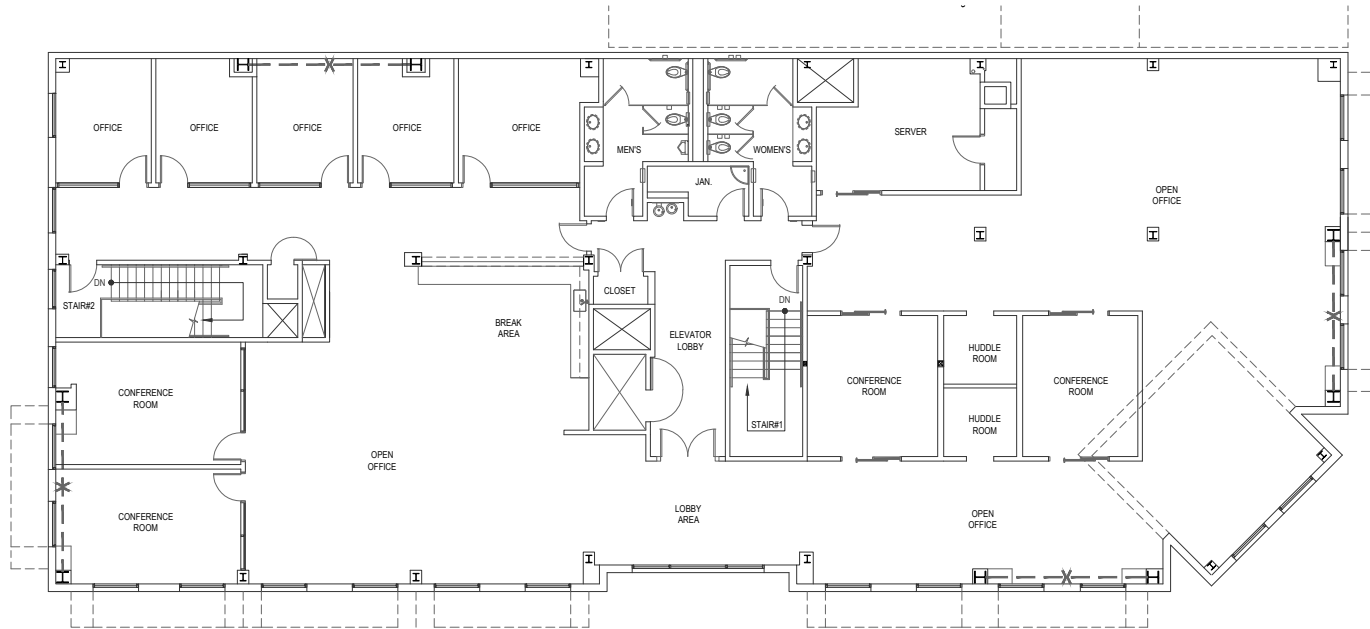
[SEE MORE HERE](#)



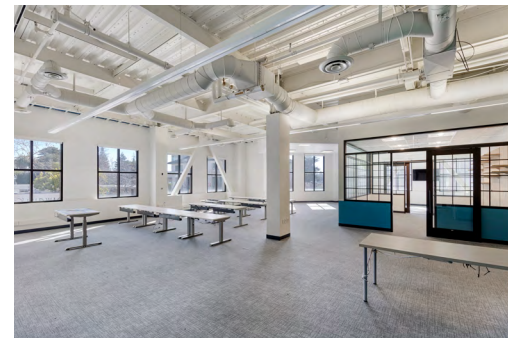
AVAILABILITY

2nd Floor Suite 200 – 8,863 SF

AVAILABLE JULY 1, 2026



- 4 CONFERENCE ROOMS
- 5 OFFICES
- 2 HUDDLE ROOMS
- LOBBY
- KITCHEN/BREAK ROOM
- SERVER ROOM
- MULTIPLE COLLABORATION AREAS
- PRIVATE RESTROOMS



800

NEARBY AMENITIES



LIMÓN®
 ROTISSERIE PERUVIAN CUISINE
 ANCHORED AT GROUND LEVEL
 OF 800 CALIFORNIA STREET



BANKS

- 1 Wells Fargo
- 2 Bank of America
- 3 BMO Bank

HOTELS

- 1 150 Hope Street Boutique Lifestyle Hotel (in development)
- 2 Hampton Inn & Suites
- 3 Americas Best Value Inn
- 4 Holiday Inn Express

TRANSPORTATION



RESTAURANTS

- 1 Limon
- 2 Doppio Zero
- 3 Vaso Azzurro Ristorante
- 4 Fish With You
- 5 Chez TJ
- 6 Paris Baguette
- 7 Vida Tapas Y Cocteles
- 8 St. Stephen's Green
- 9 Ristorante Don Giovanni
- 10 Gelato Italian Ice Cream
- 11 Queen House
- 12 Dana Street Roasting Co.
- 13 Sushi Tomi
- 14 Rootstock Wine Bar
- 15 Scratch
- 16 Cascal
- 17 Das Bierhaus
- 18 Le Boulanger
- 19 Starbucks
- 20 Asian Box
- 21 Amici's
- 22 Casa Lupe
- 23 Kirin

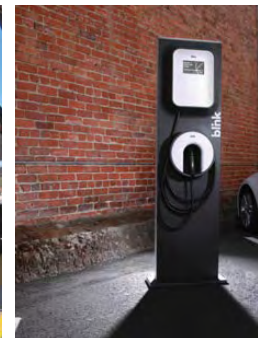
RETAIL

- 1 UPS Store
- 2 US Post Office
- 3 Books Inc
- 4 CVS



CONNECTIVITY

WALK TO CALTRAIN STATION ● ● ●



800 California Street

MOUNTAIN VIEW, CA

For More Information, Please Contact:

DAN PERSYN

+1 650 320 0255

dan.persyn@cushwake.com

Lic. 01184798

BRANDON BAIN

+1 408 615 3416

brandon.bain@cushwake.com

Lic. 01308375

ERIK HALLGRIMSON

+1 408 615 3435

erik.hallgrimson@cushwake.com

Lic. 01274540



SAND HILL PROPERTY COMPANY

