

360° of Hyde Park, Oakley, Norwood & Rookwood

CORNERSTONE AT NORWOOD

4000 & 4030 SMITH ROAD
NORWOOD, OH 45209



**CUSHMAN &
WAKEFIELD**



**MATRIX
HOLDINGS**



CORNERSTONE
at Norwood



PROPERTY HIGHLIGHTS

Cornerstone at Norwood offers a convenient neighborhood location with immediate highway access, sweeping views, prestigious area amenities and superior I-71 visibility.

Cornerstone I 4030 Smith Road

- Seven stories comprised of four office, two mezzanine office and one parking garage
- NEW indoor pickleball court for Cornerstone I & II tenants
- Fitness center with showers
- Two conference rooms and Mother's room
- On-site management
- Surface and garage parking (4:1,000 sf)
- Building and monument signage available

Cornerstone II 4000 Smith Road

- Six stories comprised of five office and one parking garage
- Access to fitness center with showers and two conference rooms in Cornerstone I
- Garage parking (4:1,000 sf)
- On-site management
- Monument sign availability

CORNERSTONE AT NORWOOD

Cornerstone I
4030 Smith Road

123,736 RSF

BUILDING SIZE

21,154 RSF

AVAILABLE

\$18.95 NNN

ASKING RATE

\$12.15

OPEX

Cornerstone II
4000 Smith Road

114,989 RSF

BUILDING SIZE

12,652 RSF

AVAILABLE

\$18.95 NNN

ASKING RATE

\$12.10

OPEX



BY THE NUMBERS

238K

TOTAL RSF
COMBINED

1,100

PARKING
SPACES

2

ELECTRIC CAR
CHARGING
STATIONS

174K

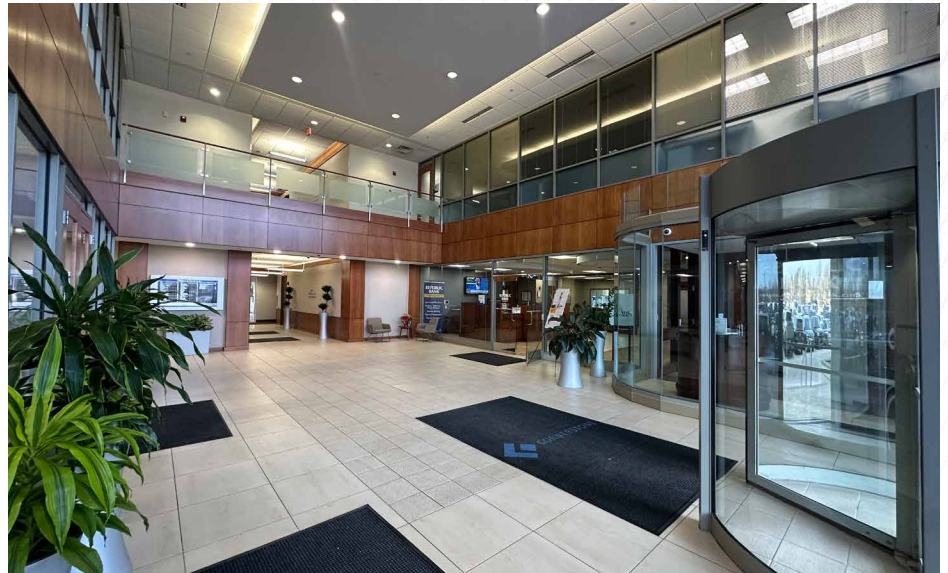
VEHICLES
DRIVE BY PER
DAY

10 MIN

DRIVE TO
DOWNTOWN

100+

RESTAURANTS
& RETAIL
WITHIN 1 MILE



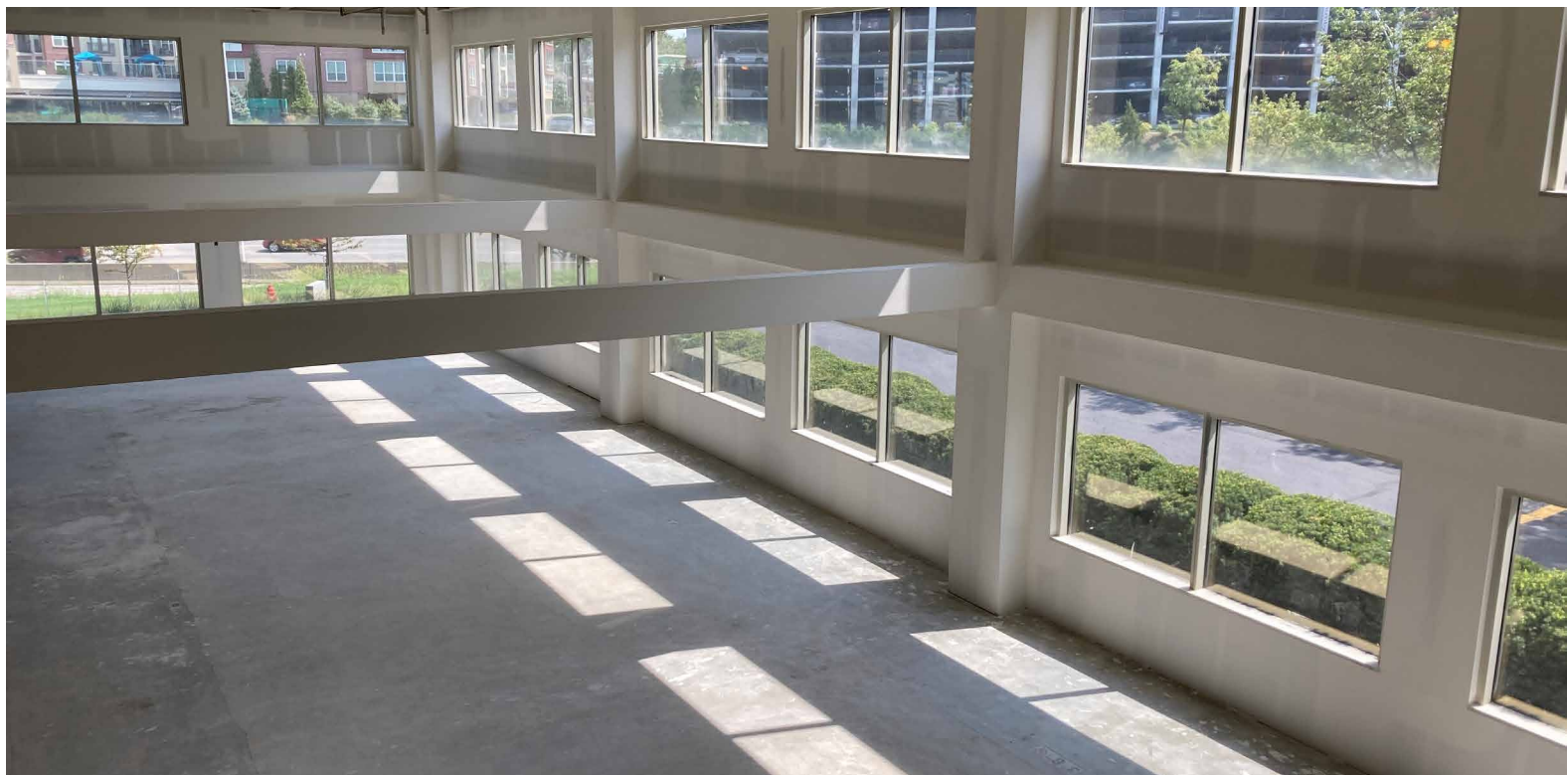
***NEW!* PICKLEBALL COURT**

Indoor pickleball court now available for all tenants located at Cornerstone I.



FEATURED SPACE

MEZZANINE 1 & 2 AT CORNERSTONE I



FEATURED SPACE

Mezzanine 1 Lounge,
Perch and Workstations



Mezzanine 2
Workstations and Perch



Mezzanine 2
Reception



FEATURED SPACE

TEST FIT FOR MEZZANINE 2 AT CORNERSTONE I

Individual Spaces

Workstations 44

Collaborative Spaces

Phone Booth 3

Focus Room (2 people) 1

Huddle Room (4 people) 2

Meeting Room (6 people) 3

Open Collaboration 2

Lounge 1

Wellbeing Spaces

Perch 2

Cafe 1

IDF Room 1

Mothers' Room 1

Copy-Print-Supply Point 1

5,968 RSF



FEATURED SPACE

TEST FIT FOR MEZZANINE 1 AT CORNERSTONE I

Individual Spaces

Workstations 20

Collaborative Spaces

Focus Room (1 person) 2

Huddle Room (4 people) 1

Meeting Room (6 people) 2

Open Collaboration 2

Lounge 1

Wellbeing Spaces

Perch 2

Hydration Station 1

IDF Room 1

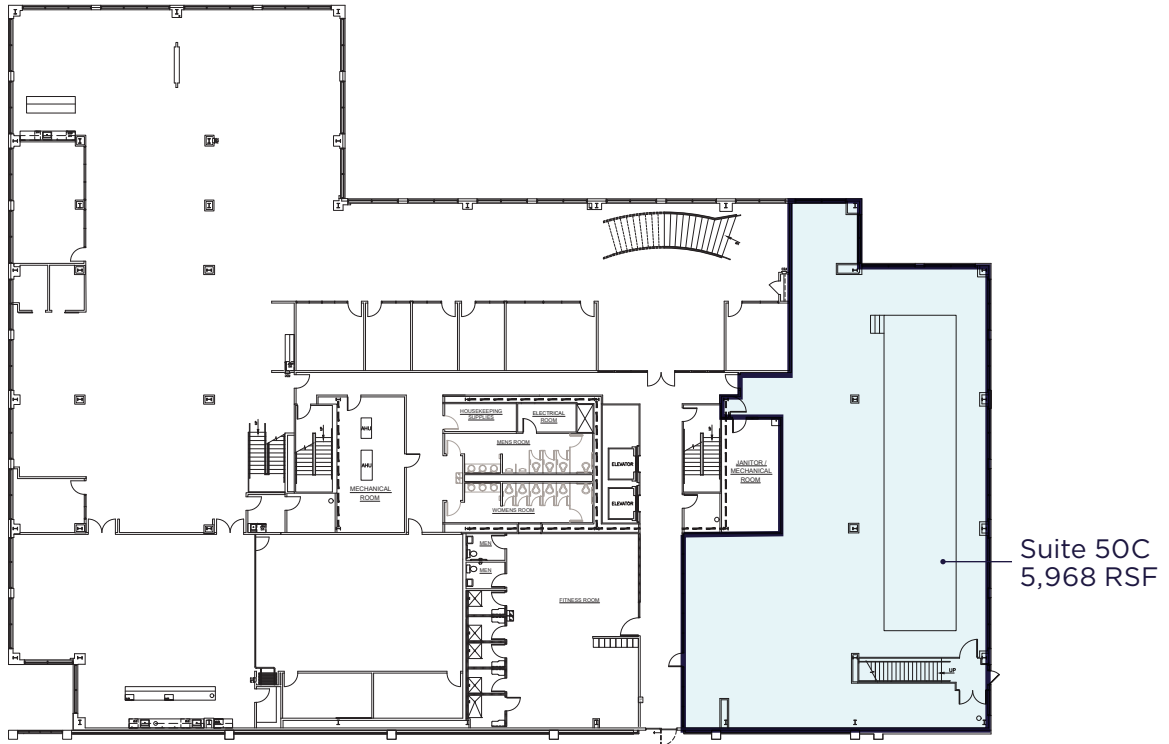
Storage 1

Copy-Print-Supply Point 1

3,463 RSF

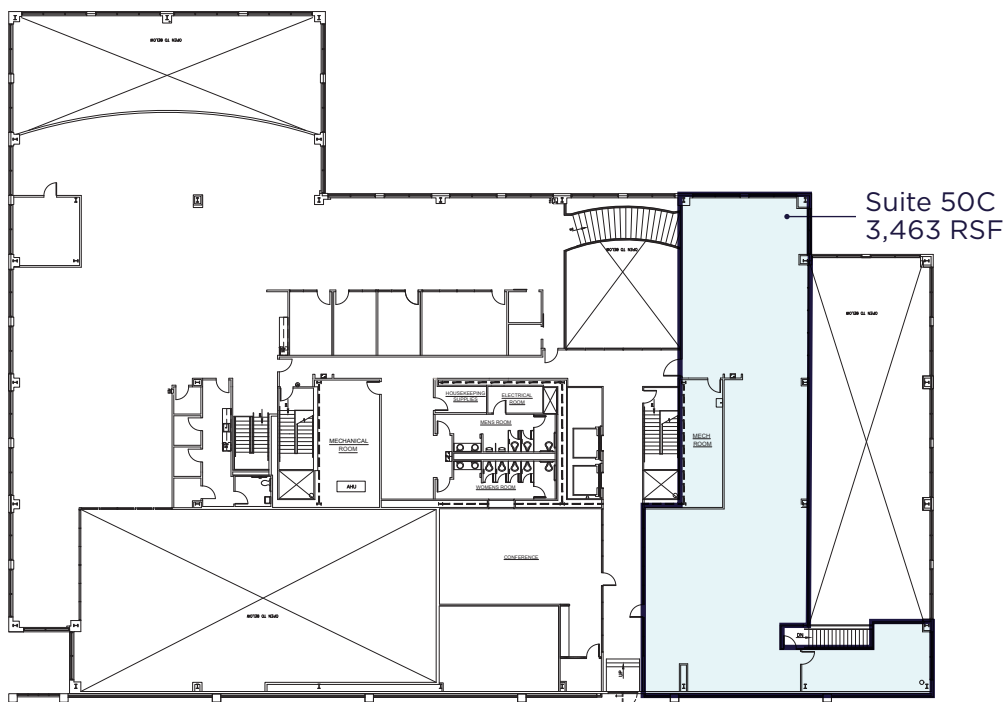


CORNERSTONE I



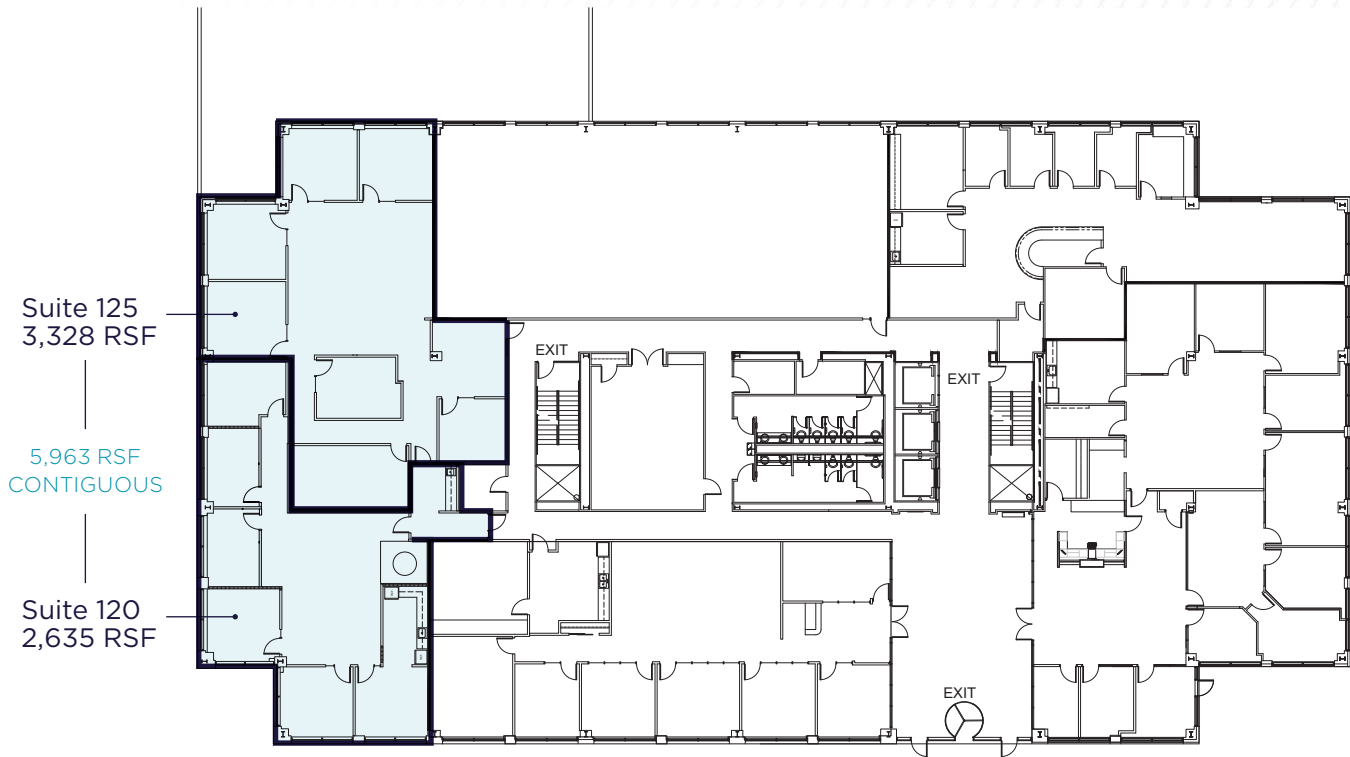
MEZZANINE 2 - LOWER LEVEL 2

9,431 total contiguous RSF



MEZZANINE 1 - LOWER LEVEL 1

CORNERSTONE I



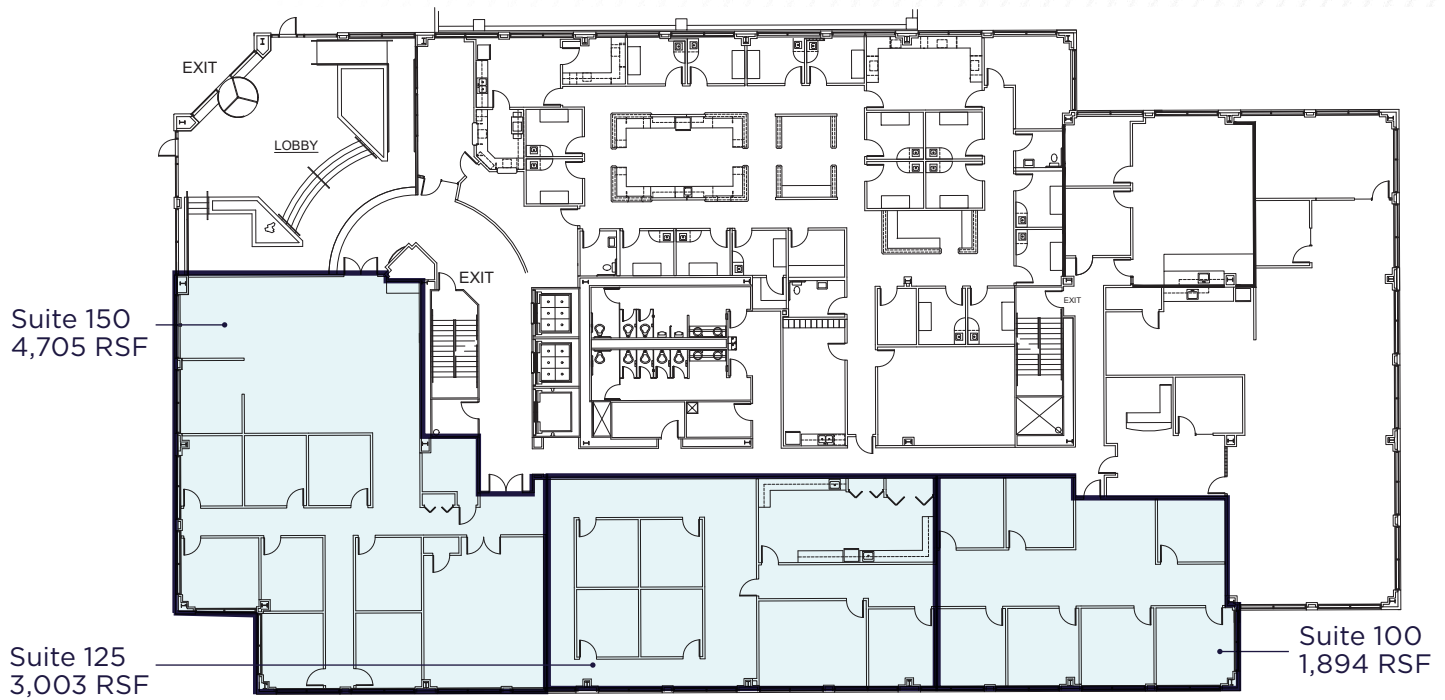
FLOOR 1

5,963 TOTAL CONTIGUOUS RSF



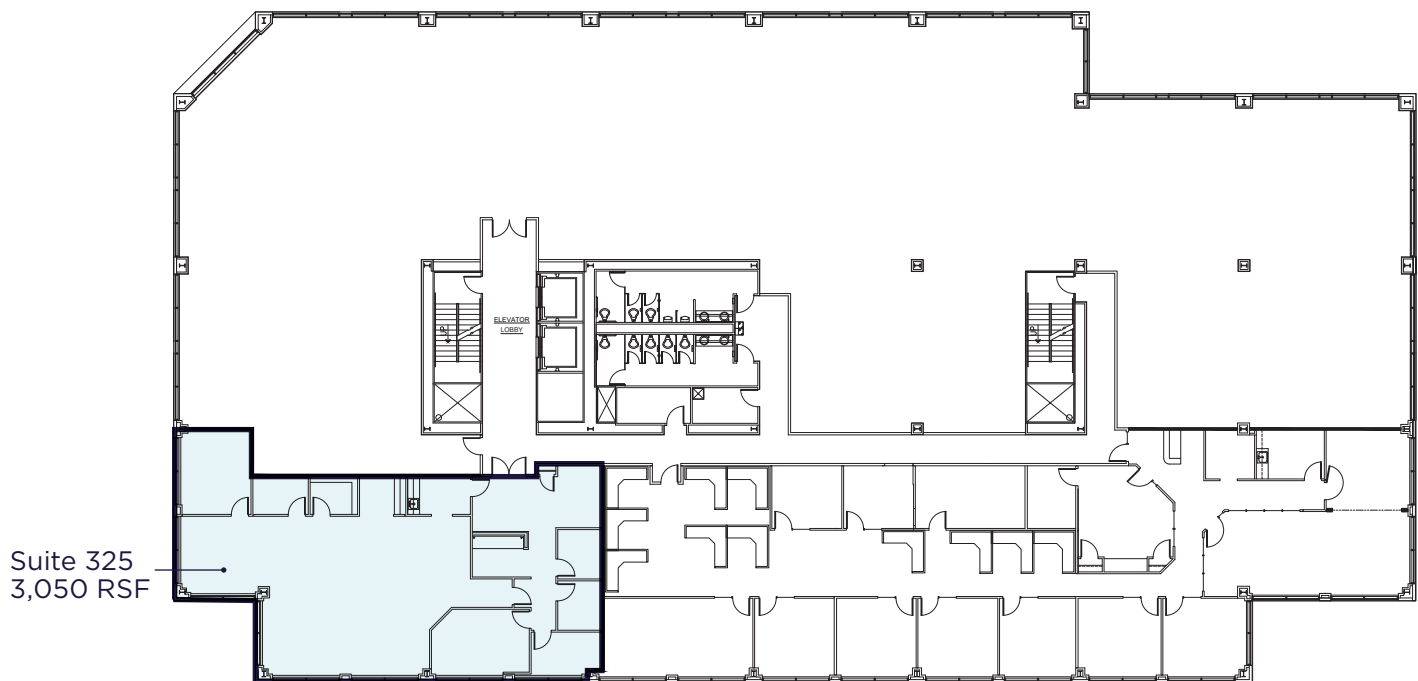
FLOOR 3

CORNERSTONE II



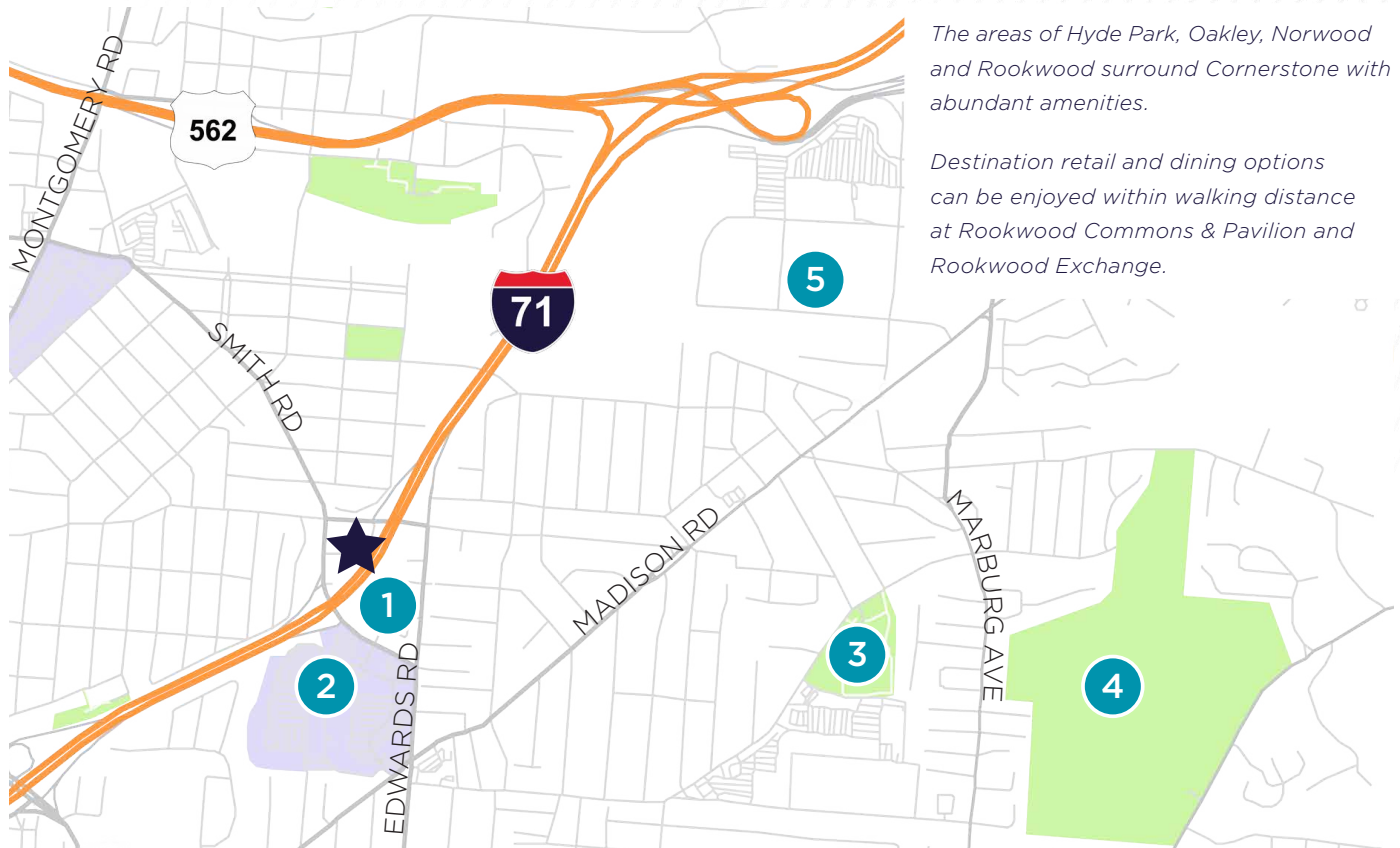
FLOOR 1

9,602 TOTAL CONTIGUOUS RSF



FLOOR 3

AREA AMENITIES



The areas of Hyde Park, Oakley, Norwood and Rookwood surround Cornerstone with abundant amenities.

Destination retail and dining options can be enjoyed within walking distance at Rookwood Commons & Pavilion and Rookwood Exchange.

1 Rookwood Exchange

- Courtyard by Marriott
- Residence Inn by Marriott
- One Rookwood Apartments
- Agave & Rye
- Fueled Collective
- Seasons 52
- Spavia
- Taste of Belgium
- Jason's Deli
- The Capital Grille

2 Rookwood Commons & Pavilion

- Home Goods
- BJ's Restaurant

- DSW
- P.F. Chang's
- J. Alexander's
- Starbucks
- Banana Republic
- Cyclebar
- Eddie Bauer
- West Elm
- Chico's
- J.Crew Factory
- The Pub
- Ulta Beauty
- Sephora
- Potbelly
- T.J. Maxx
- Mitchell's Salon & Day Spa
- Nordstrom Rack
- Old Navy

- Altar'd State
- REI
- Talbots
- The Gap
- Whole Foods

3 Hyde Park Plaza

- Kroger Marketplace
- Massage Envy
- Piada Italian Street Food
- FUSIAN
- Starbucks
- Panera Bread
- Staples
- Walgreens
- USPS
- Bruegger's Bagels
- Michaels
- Shaan Indian Cuisine

4 Hyde Park Golf & Country Club

- ## 5 Oakley Station
- Kroger Marketplace
 - Cinemark Theatres
 - Meijer
 - Target
 - Esporta Fitness
 - Wild Eggs
 - Condado Tacos
 - MOD Pizza
 - Orangetheory Fitness
 - Chick-fil-A
 - Wings and Rings
 - Crossroads Church
 - MadTree Brewing
 - MOD Pizza
 - Homewood Suites by Hilton

FOR MORE INFORMATION, PLEASE CONTACT:

Joe Janszen
Senior Director
+1 513 549 3011
joe.janszen@cushwake.com

Scott Abernethy, CCIM, SIOR
Senior Director
+1 513 763 3013
scott.abernethy@cushwake.com



©2025 Cushman & Wakefield. All rights reserved. The information contained in this communication is strictly confidential. This information has been obtained from sources believed to be reliable but has not been verified. NO WARRANTY OR REPRESENTATION, EXPRESS OR IMPLIED, IS MADE AS TO THE CONDITION OF THE PROPERTY (OR PROPERTIES) REFERENCED HEREIN OR AS TO THE ACCURACY OR COMPLETENESS OF THE INFORMATION CONTAINED HEREIN, AND SAME IS SUBMITTED SUBJECT TO ERRORS, OMISSIONS, CHANGE OF PRICE, RENTAL OR OTHER CONDITIONS, WITHDRAWAL WITHOUT NOTICE, AND TO ANY SPECIAL LISTING CONDITIONS IMPOSED BY THE PROPERTY OWNER(S). ANY PROJECTIONS, OPINIONS OR ESTIMATES ARE SUBJECT TO UNCERTAINTY AND DO NOT SIGNIFY CURRENT OR FUTURE PROPERTY PERFORMANCE.