

**FOR LEASE**

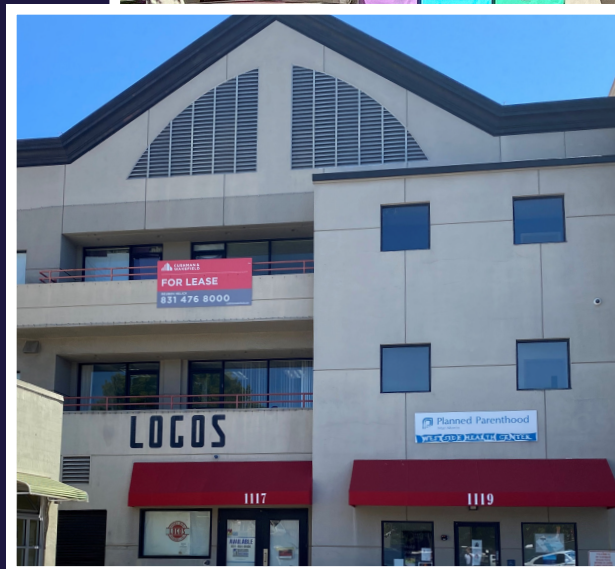
# 1119 PACIFIC AVENUE

SANTA CRUZ, CA

±6,200 RSF  
MEDICAL OFFICE SPACE

**REUBEN HELICK**  
Managing Director  
+1 831 588 9033  
reuben.helick@cushwake.com  
Lic #01171272

**NICK GREENUP**  
Senior Associate  
+1 831 647 2106  
nicholas.greenup@cushwake.com  
Lic #02143358



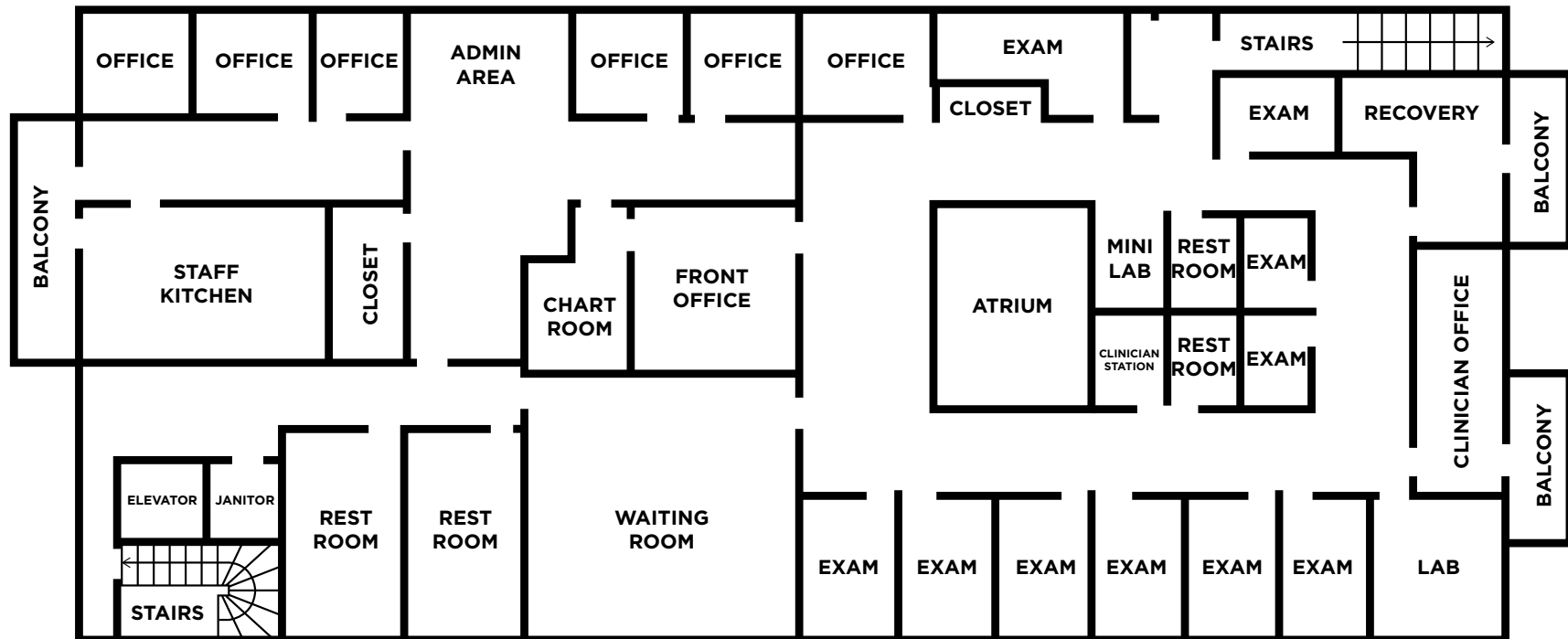
# 1119 PACIFIC AVENUE

SANTA CRUZ, CA

## PROPERTY HIGHLIGHTS

- Approximately ±6,200 RSF
- Seven Offices
- Ten Exam Rooms
- Reception/Waiting Area
- Break Room
- Two Large Restrooms
- Lab Space
- Conference Room
- Outside Balcony Space
- Second Floor - Elevator Served
- **AVAILABLE NOW!**

## FLOOR PLAN

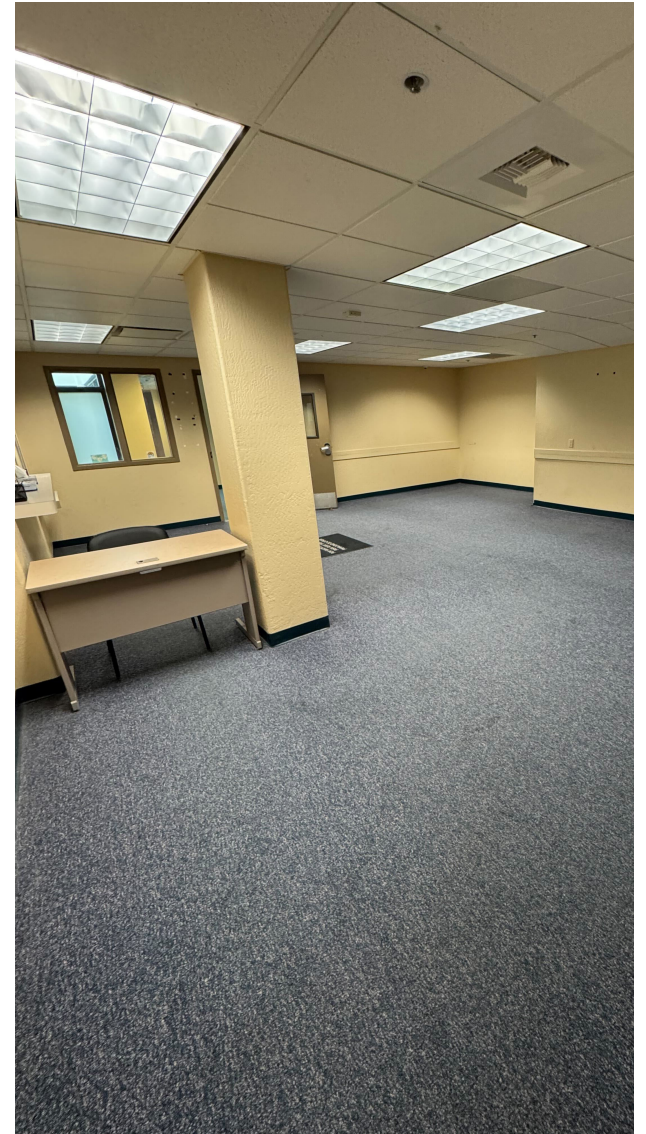




# 1119 PACIFIC AVENUE

SANTA CRUZ, CA

## PROPERTY PHOTOS







CALL LISTING AGENTS FOR MORE INFORMATION:

**REUBEN HELICK**  
Managing Director  
+1 831 588 9033  
reuben.helick@cushwake.com  
Lic #01171272

**NICK GREENUP**  
Senior Associate  
+1 831 647 2106  
nicholas.greenup@cushwake.com  
Lic #02143358

©2025 Cushman & Wakefield. All rights reserved. The material in this presentation has been prepared solely for information purposes, and is strictly confidential. Any disclosure, use, copying or circulation of this presentation (or the information contained within it) is strictly prohibited, unless you have obtained Cushman & Wakefield's prior written consent. The views expressed in this presentation are the views of the author and do not necessarily reflect the views of Cushman & Wakefield. Neither this presentation nor any part of it shall form the basis of, or be relied upon in connection with any offer, or act as an inducement to enter into any contract or commitment whatsoever. NO REPRESENTATION OR WARRANTY IS GIVEN, EXPRESS OR IMPLIED, AS TO THE ACCURACY OF THE INFORMATION CONTAINED WITHIN THIS PRESENTATION, AND CUSHMAN & WAKEFIELD IS UNDER NO OBLIGATION TO SUBSEQUENTLY CORRECT IT IN THE EVENT OF ERRORS.