

1,739-4,613 RSF AVAILABLE FOR SUBLEASE

# BANK OF AMERICA TOWER

4242 SIX FORKS RD, RALEIGH, NC 27609



# BANK OF AMERICA TOWER

Suite 880 & 1570: “Move-in ready” office suites in prestigious North Hills

## SUITE FEATURES

- Suite 1570: approx. 1,739 RSF
- Suite 880: approx. 2,874 RSF
- Available now with sublease term through 3/31/2028
- Asking Rate: Negotiable

## PROPERTY FEATURES

- Ideally located off Six Forks Road and I-440, Bank of America Tower sits in the heart of Midtown Raleigh
- Suite 880 is located adjacent to the shared conferencing center on the 8th floor of the building
- A dynamic, amenity-packed urban hub with walkable living, dining, nightlife, shopping and entertainment options



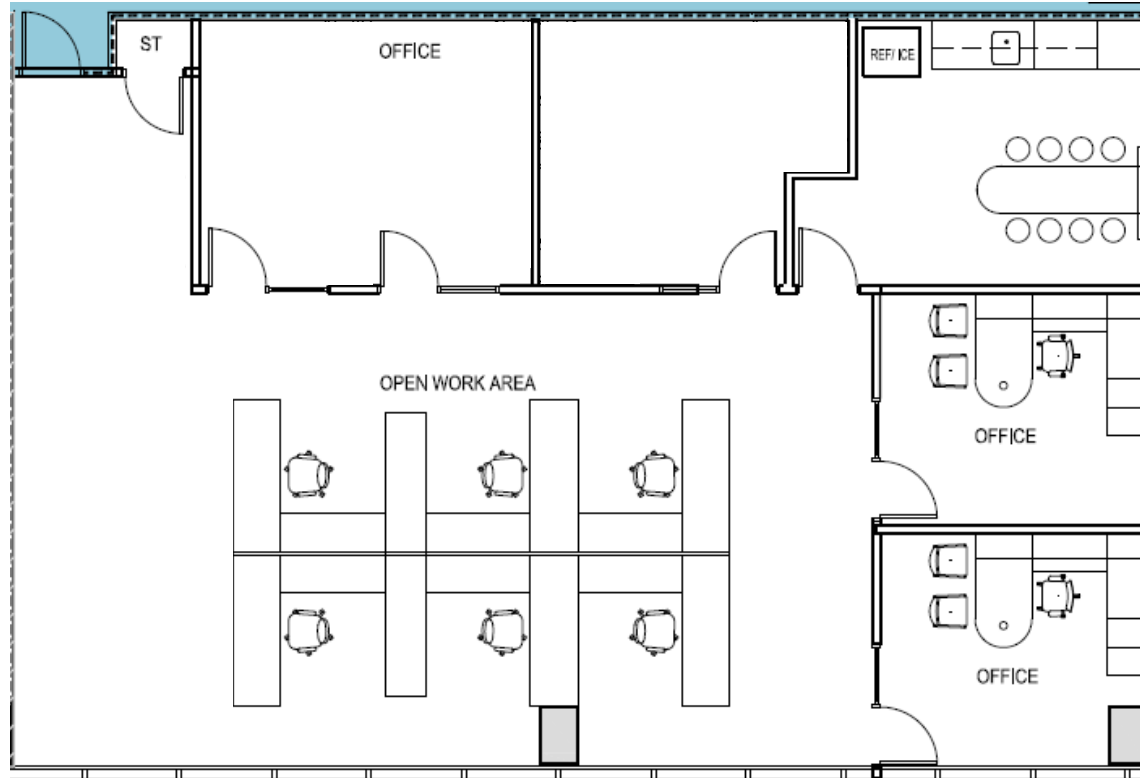
# BANK OF AMERICA TOWER



## FLOOR PLAN (Accuracy of plan and furniture shown not guaranteed)

SUITE 880 | 2,874 SF

- 8 Work Stations
- 5-person Office
- 2 Private Offices
- 1 Conference Room
- 1 Break Room
- 1 Phone Booths





# BANK OF AMERICA TOWER



## SUITE 880 PHOTOS



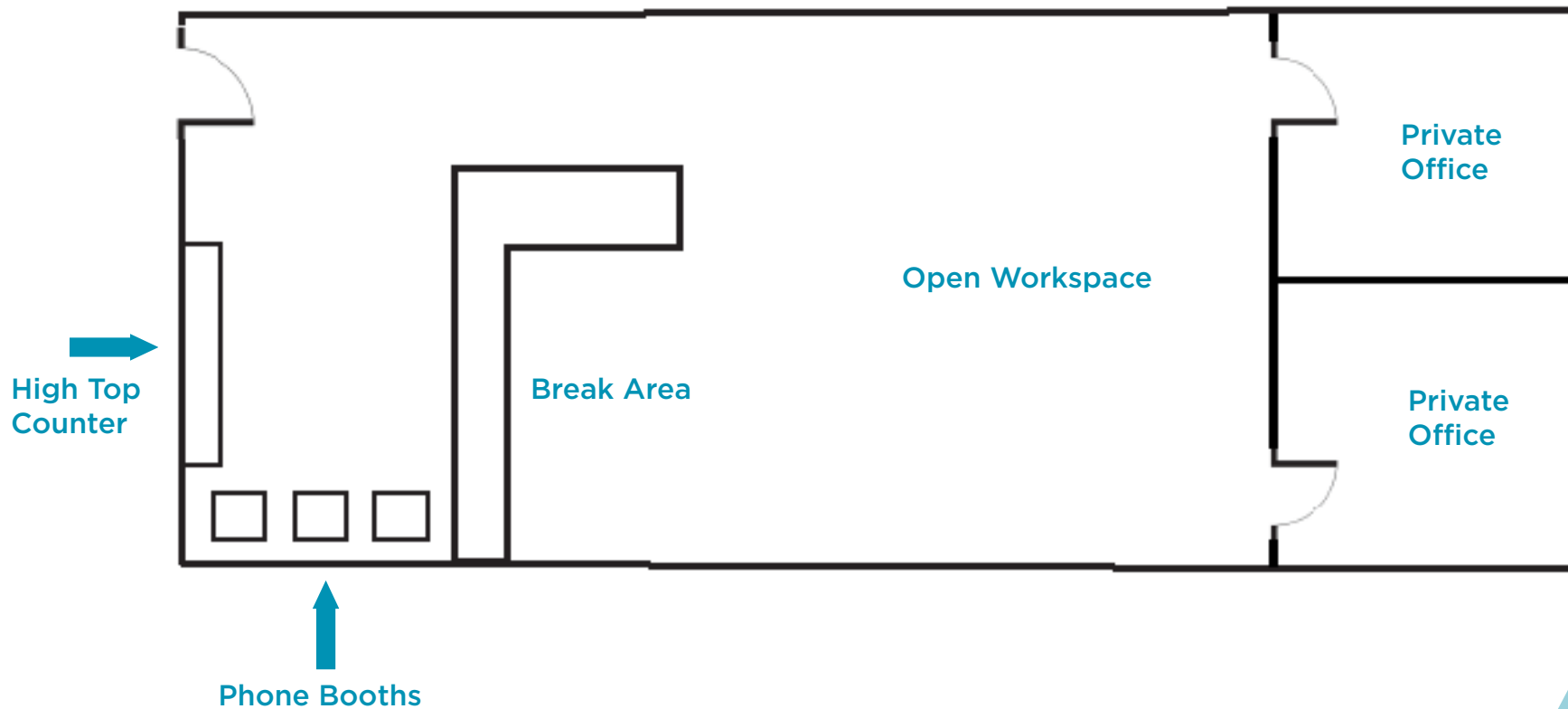
# BANK OF AMERICA TOWER



## FLOOR PLAN (Accuracy of plan and furniture shown not guaranteed)

SUITE 1570 | 1,739 SF

- 16 Work Stations
- 2 Private Offices
- 3 Phone Booths





# BANK OF AMERICA TOWER



## SUITE 1570 PHOTOS







AVAILABLE FOR SUBLEASE

# BANK OF AMERICA TOWER

4242 SIX FORKS RD, RALEIGH, NC 27609

For more information, please contact:

**DEB BOUCHER**

Mobile: +1 919 475 0744

[deb.boucher@cushwake.com](mailto:deb.boucher@cushwake.com)

**KATE BOYLE**

Mobile: +1 919 710 1361

[kate.boyle@cushwake.com](mailto:kate.boyle@cushwake.com)



**CUSHMAN &  
WAKEFIELD**

1 Fenton Main Street, Suite 480

Cary, NC 27511 | USA

PH: +1 919 789 4255

FX: +1 919 789 0268

[cushmanwakefield.com](http://cushmanwakefield.com)

©2025 Cushman & Wakefield. All rights reserved. The information contained in this communication is strictly confidential. This information has been obtained from sources believed to be reliable but has not been verified. NO WARRANTY OR REPRESENTATION, EXPRESS OR IMPLIED, IS MADE AS TO THE CONDITION OF THE PROPERTY (OR PROPERTIES) REFERENCED HEREIN OR AS TO THE ACCURACY OR COMPLETENESS OF THE INFORMATION CONTAINED HEREIN, AND SAME IS SUBMITTED SUBJECT TO ERRORS, OMISSIONS, CHANGE OF PRICE, RENTAL OR OTHER CONDITIONS, WITHDRAWAL WITHOUT NOTICE, AND TO ANY SPECIAL LISTING CONDITIONS IMPOSED BY THE PROPERTY OWNER(S). ANY PROJECTIONS, OPINIONS OR ESTIMATES ARE SUBJECT TO UNCERTAINTY AND DO NOT SIGNIFY CURRENT OR FUTURE PROPERTY PERFORMANCE.