



FOR SALE

9590 HIGHWAY 44

MIDDLETON, IDAHO 83644 - 5649



LISTING HIGHLIGHTS



\$2,500,000
SALE PRICE



5.4 ACRES
LOT SIZE



R3396600000
PARCEL ID #



9590 HIGHWAY 44, MIDDLETON | ID 83644 - 5649

PRIME COMMERCIAL LAND OPPORTUNITY IN MIDDLETON, IDAHO

Unlock the potential of one of Middleton's most visible and accessible commercial sites. Situated directly along **Highway 44**, this **5.4-acre** property offers exceptional frontage and exposure in a rapidly growing area of Canyon County. The site's generous acreage and strategic location make it ideal for a variety of commercial uses.

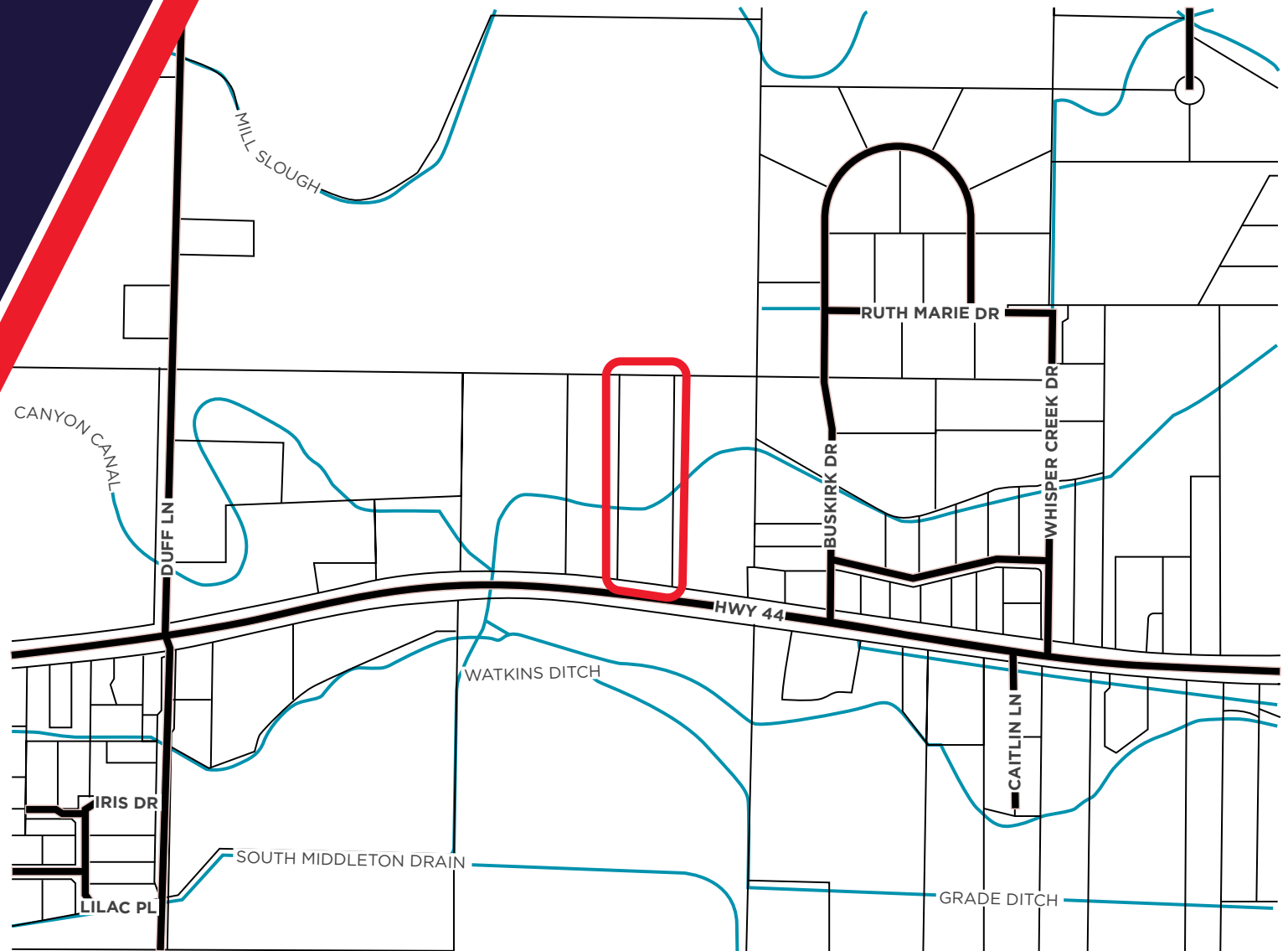


PROPERTY HIGHLIGHTS

- **Excellent Visibility & Access:** Prime location on Hwy 44, Middleton's main east-west thoroughfare connecting to Star, Eagle, and Caldwell.
- **Ample Acreage:** 5.4 acres of level land ready for development.
- **High Growth Corridor:** Middleton and surrounding communities are experiencing robust residential and commercial growth, driving demand for new services and amenities.
- **Investment Opportunity:** Strong potential for long-term appreciation and development flexibility.

Whether you're an investor, developer, or business owner seeking a flagship location, **9590 Hwy 44** offers unmatched potential in one of Idaho's fastest-growing markets.

LOCATION MAP



9590 HIGHWAY 44, MIDDLETON | ID 83644 - 5649



For more information, please contact:

JENNIFER MCENTEE

Senior Director
Office | Capital Markets
+1 208 287 9495
jennifer.mcentee@cushwake.com

BREE WELLS

Director
Office | Capital Markets
+1 208 287 9492
bree.wells@cushwake.com

BRAYDON TORRES

Associate
Office | Capital Markets
+1 208 287 9485
braydon.torres@cushwake.com

999 W Main Street
Suite 1300
Boise, ID 83702
+1 208 287 9500
cushmanwakefield.com

©2025 Cushman & Wakefield. All rights reserved. The information contained in this communication is strictly confidential. This information has been obtained from sources believed to be reliable but has not been verified. NO WARRANTY OR REPRESENTATION, EXPRESS OR IMPLIED, IS MADE AS TO THE CONDITION OF THE PROPERTY (OR PROPERTIES) REFERENCED HEREIN OR AS TO THE ACCURACY OR COMPLETENESS OF THE INFORMATION CONTAINED HEREIN, AND SAME IS SUBMITTED SUBJECT TO ERRORS, OMISSIONS, CHANGE OF PRICE, RENTAL OR OTHER CONDITIONS, WITHDRAWAL WITHOUT NOTICE, AND TO ANY SPECIAL LISTING CONDITIONS IMPOSED BY THE PROPERTY OWNER(S). ANY PROJECTIONS, OPINIONS OR ESTIMATES ARE SUBJECT TO UNCERTAINTY AND DO NOT SIGNIFY CURRENT OR FUTURE PROPERTY PERFORMANCE.