

**FOR LEASE ±5,910 SF**



**AVAILABLE**

**712 NORTH ELM STREET**

**HIGHPOINT, NC 27262**



# 712 NORTH ELM STREET HIGHPOINT, NC 27262

## Property Features

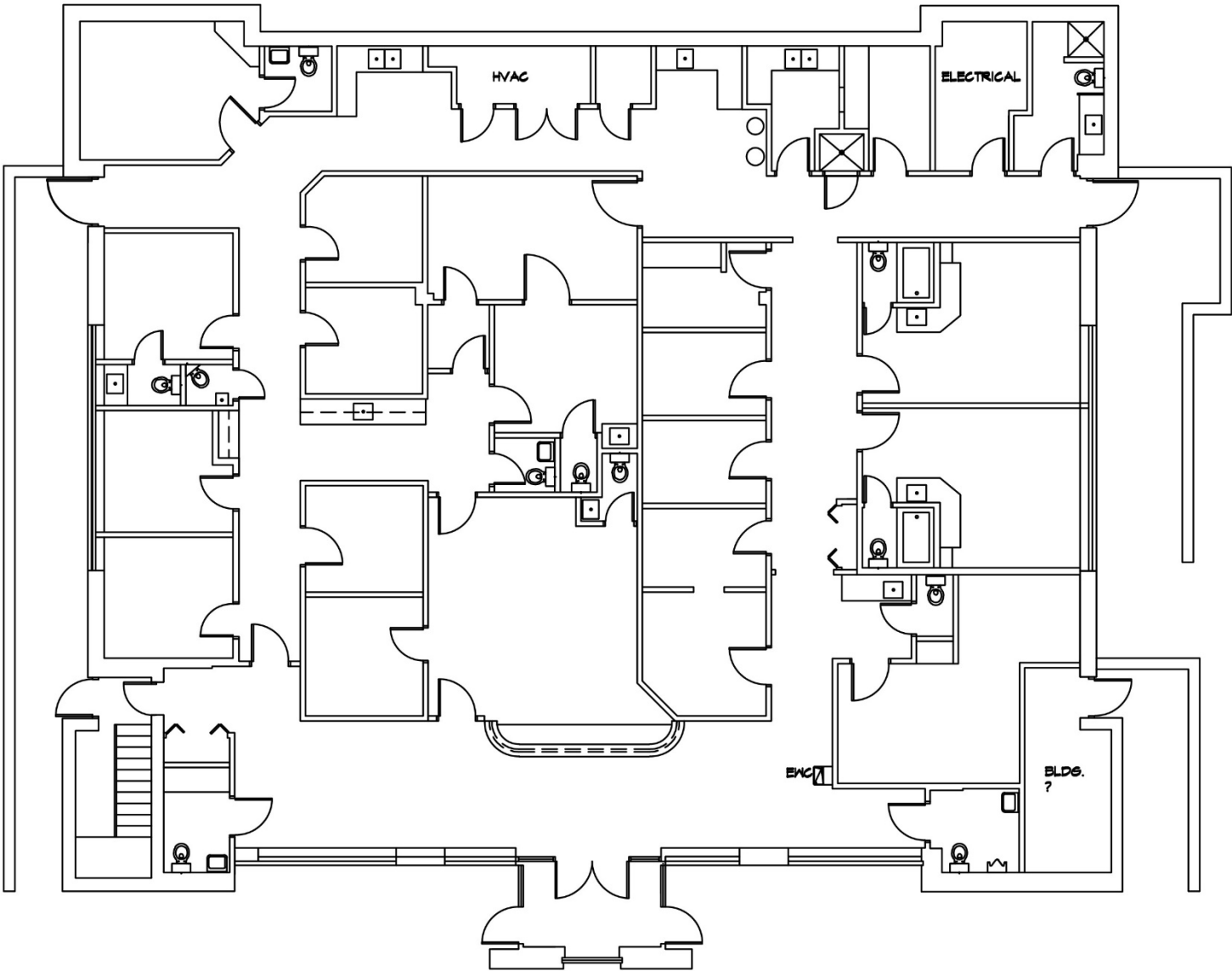
- 5,910 SF
- 2 level building
- Built in 1982
- Parking ratio is 5.23/1,000
- Located within high density medical office area
- Within walking distance to High Point Medical Center (Atrium Health)
- 1st level availability with easy access from the parking lot
- Prominent Tenant signage available
- Flexible floorplan options
- Ample nearby amenities with convenient access to major thoroughfares
- Above average parking ratios for Medical Office Tenant use





712 NORTH ELM STREET  
HIGHPOINT, NC 27262

Floor Plan



# 712 NORTH ELM STREET HIGHPOINT, NC 27262

## Surrounding Businesses / Amenities



### RYAN GIOFFRE

Senior Director

+1 336 601 3488

[ryan.gioffre@cushwake.com](mailto:ryan.gioffre@cushwake.com)

628 Green Valley Road, Ste. 202

Greensboro, NC 27408

Main: +1 336 668 9999

Fax: +1 336 668 0888

[cushmanwakefield.com](http://cushmanwakefield.com)