

1340

S. DE ANZA BOULEVARD



Contact

CLARK STEELE
+1 408 436 3653
clark.steele@cushwake.com
LIC #01995379

BRETT KROUSKUP
+1 408 615 3432
brett.krouskup@cushwake.com
LIC #01904239

NEW SUITES AVAILABLE!

±529 - ±2,183 SF OFFICE SPACES FOR LEASE IN SAN JOSE



1340 S. DE ANZA BOULEVARD

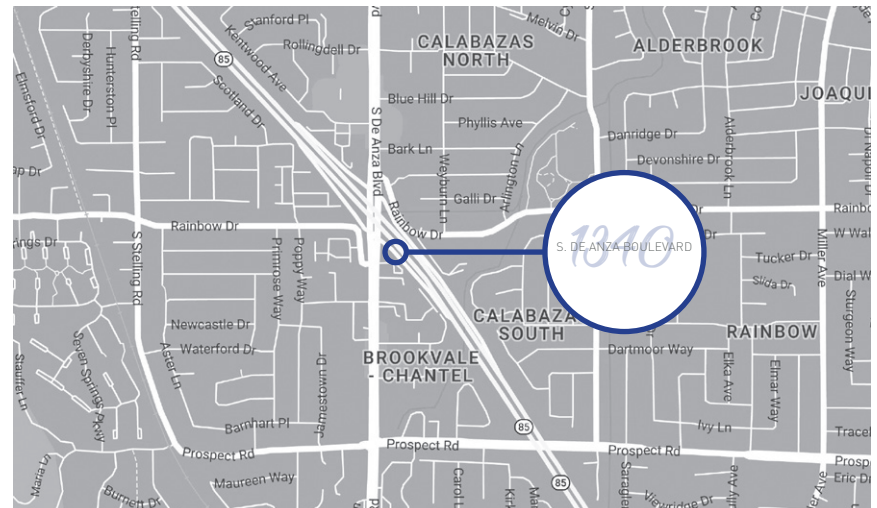
BUILDING HIGHLIGHTS

- Located Immediately Off Highway 85
- Beautiful Atrium with Seating
- Ample Parking @ 4/1000
- Close to Nearby Retail & Amenities
- Three West Valley Downtowns within 10 Minutes
- Great Window Line
- Balconies Off All Suites on Second Floor
- Building Upgrades Underway

AVAILABILITY

SUITE	SIZE	AVAILABLE
202*	±846 SF	Now - Market Ready!
203*	±1,337 SF	Now
205	±2,182 SF	Now
207	±529 SF	Now

*Suites 202 & 203 Could Be Combined for a Total of ±2,183 SF





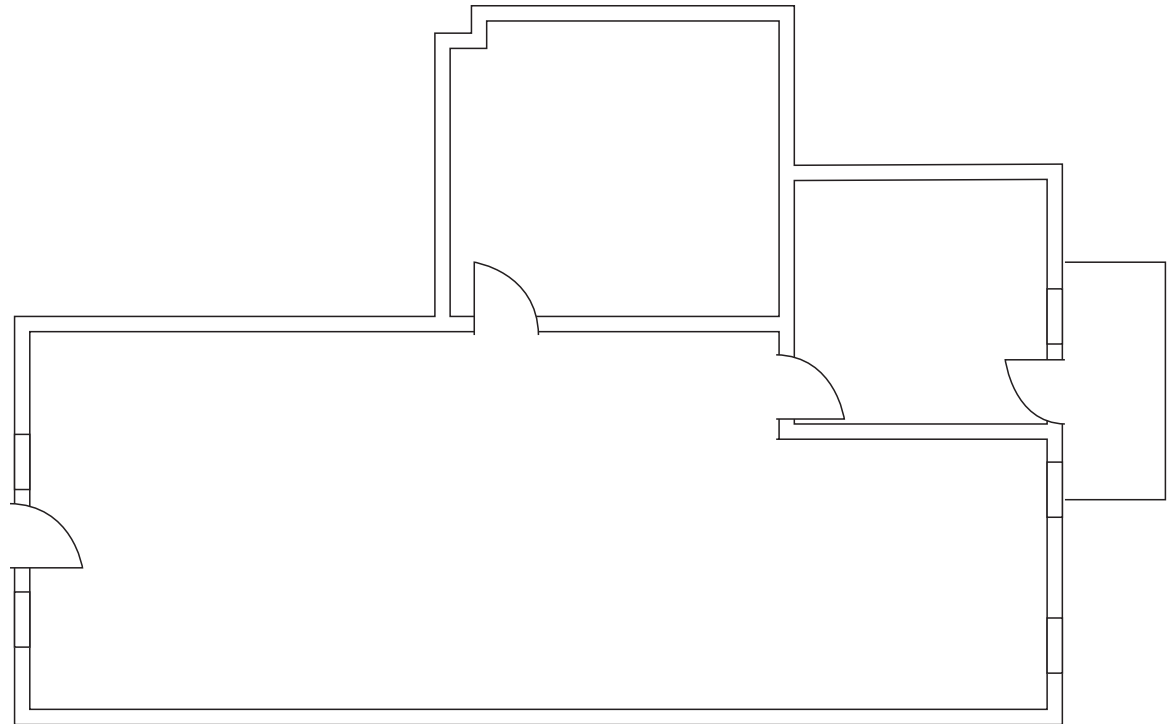
1340
S. DE ANZA BOULEVARD

FLOOR PLAN

SUITE 202: ±846 SF

- 2 Offices
- Open Area
- MARKET READY!

Suites 202 & 203 Could Be Combined for a
Total of ±2,183 SF

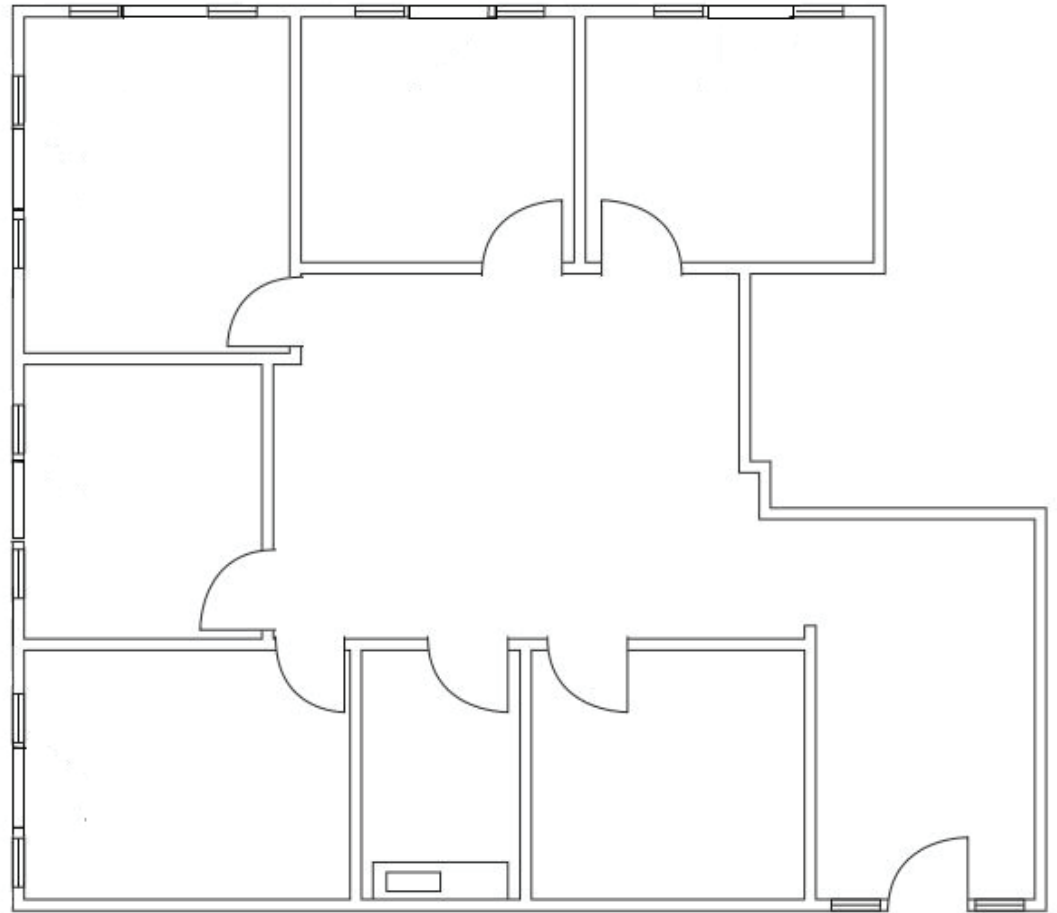


FLOOR PLAN

SUITE 203: $\pm 1,337$ SF

- Lobby/Waiting Area
- Break Room
- 1 Conference Room
- 5 Offices

Suites 202 & 203 Could Be Combined for a
Total of $\pm 2,183$ SF

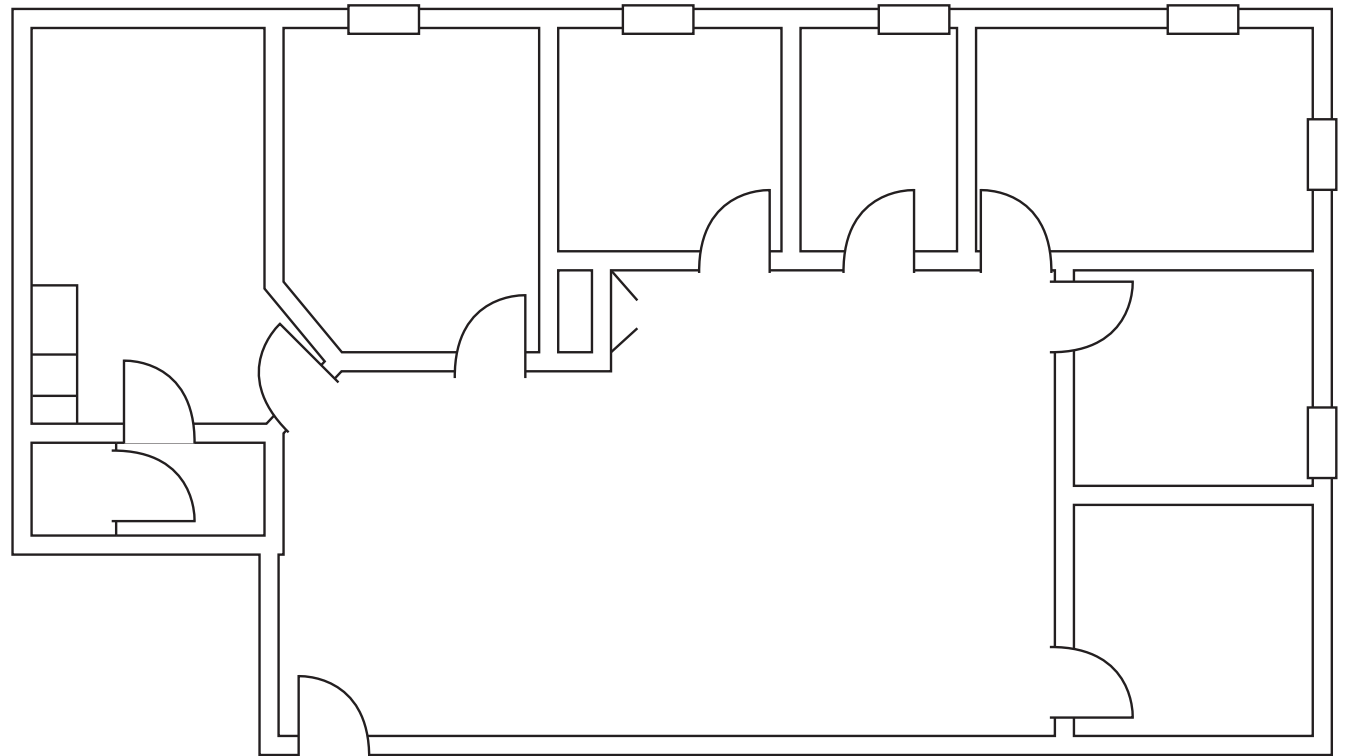


Floor Plans May Not Be Exact or to Scale

FLOOR PLAN

SUITE 205: ±2,182 SF

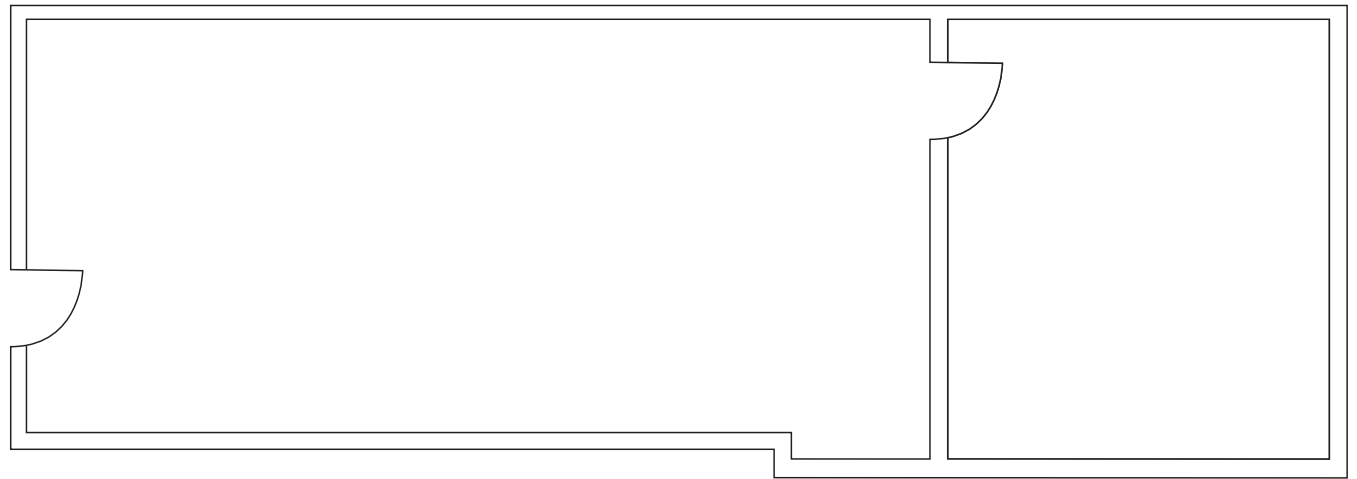
- 4 Offices
- 1 Conference Room
- Storage Area
- IT Room
- Open Area
- Kitchen
- In-Suite Shower



FLOOR PLAN

SUITE 207: ±529 SF

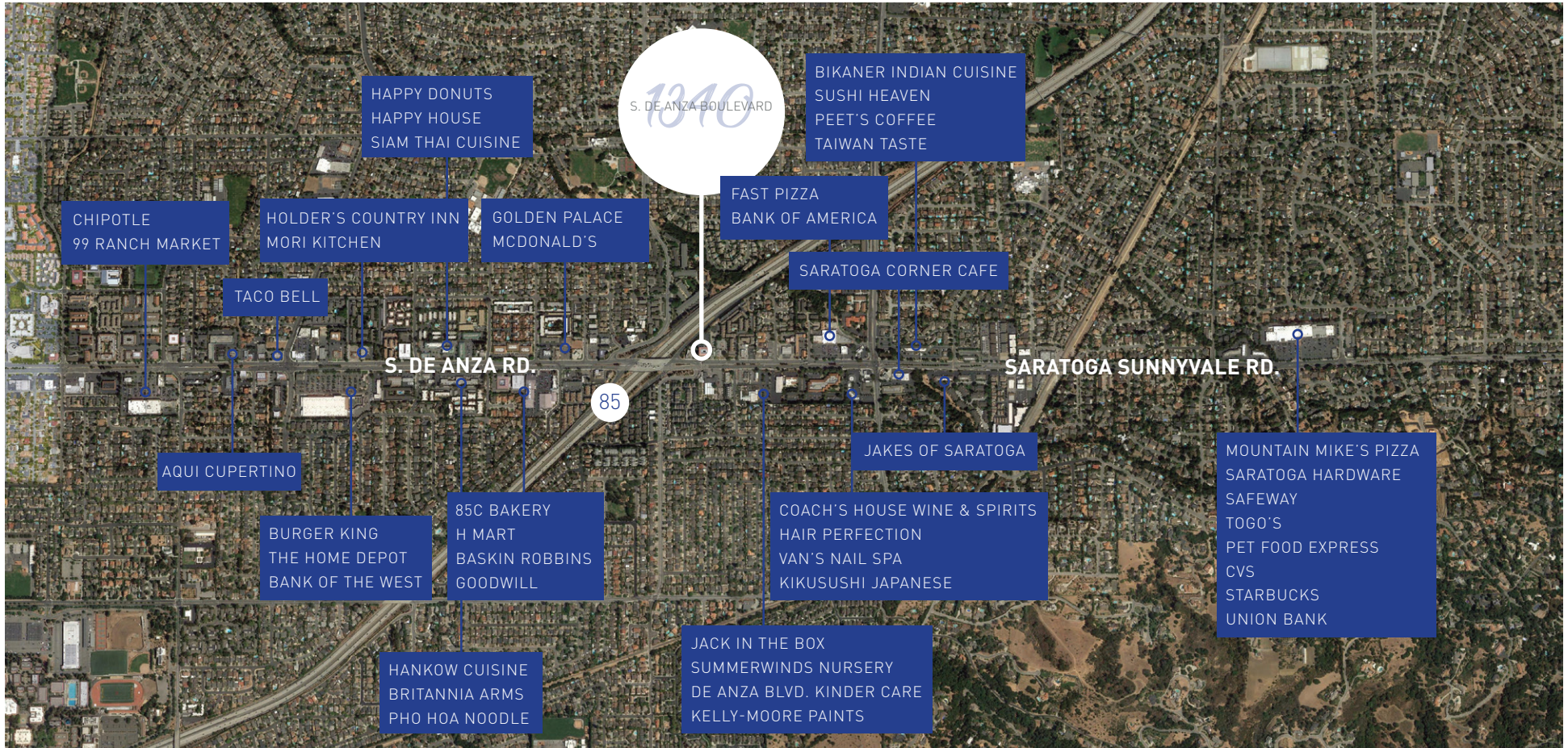
- 1 Office
- Open Area



Floor Plans May Not Be Exact or to Scale

1340 S. DE ANZA BOULEVARD

NEARBY AMENITIES



10 Minutes

DOWNTOWN LOS GATOS: 9 Minutes

DOWNTOWN SARATOGA: 7 Minutes

1340 S. DE ANZA BOULEVARD

Contact

CLARK STEELE
+1 408 436 3653
clark.steele@cushwake.com
LIC #01995379

BRETT KROUSKUP
+1 408 615 3432
brett.krouskup@cushwake.com
LIC #01904239

