



# SORRENTO COMMERCE PARK

9540-9550 WAPLES STREET, SAN DIEGO, CA 92121

## FLEX SUITES AVAILABLE FOR LEASE

**BRANT ABERG, SIOR**

858.546.5464

[brant.aberg@cushwake.com](mailto:brant.aberg@cushwake.com)

CA LIC. 01773573

**RYAN DOWNING, SIOR**

858.546.5416

[ryan.downing@cushwake.com](mailto:ryan.downing@cushwake.com)

CA LIC. 01955032

**TRINITY CARSON**

619.928.6034

[trinity.carson@cushwake.com](mailto:trinity.carson@cushwake.com)

CA LIC. 02343245



# SORRENTO COMMERCE PARK

## 9450-9550 WAPLES STREET, SAN DIEGO, CA 92121

ADDRESS	SF	RENT	COMMENTS
9540 Waples St Suite E	1,609	Negotiable	Reception, open office, 2 private offices, 1 restroom, balance warehouse, 1 grade level loading door. (Contiguous with Suite F for 3,203 SF)
9540 Waples St Suite F	1,594	Negotiable	Reception, open office, 3 private offices, 1 restroom, balance warehouse, 1 grade level loading door. (Contiguous with Suite E for 3,203 SF)

## PROPERTY HIGHLIGHTS

- Central San Diego Location
- Flex Suites
- ±14-18' Clear Height
- 3.23/1,000 Parking Ratio

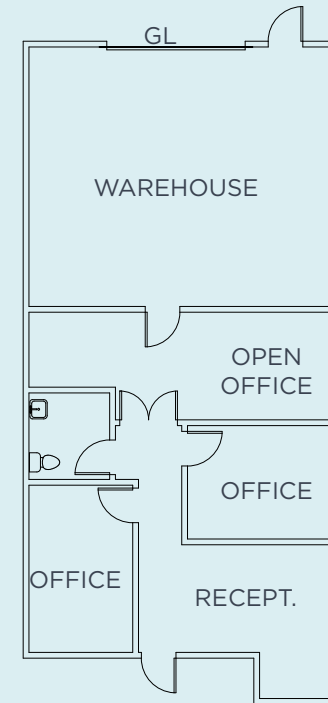


# SORRENTO COMMERCE PARK

## 9540 WAPLES STREET - SUITE E

### SUITE DETAILS

- 1,609 SF
- Reception, open office, 2 private offices, 1 restroom, balance warehouse, 1 grade level loading door
- Lease rate: Negotiable
- Contiguous with Suite F for 3,203 SF

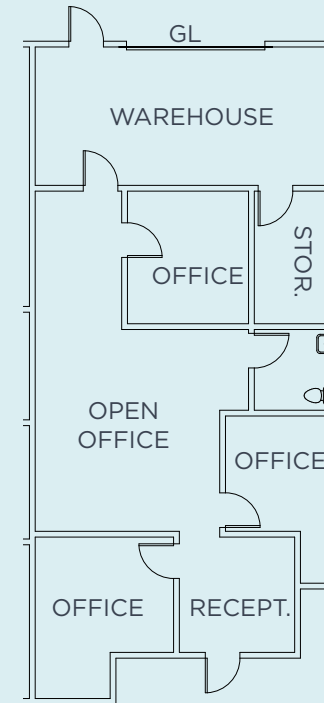


# SORRENTO COMMERCE PARK

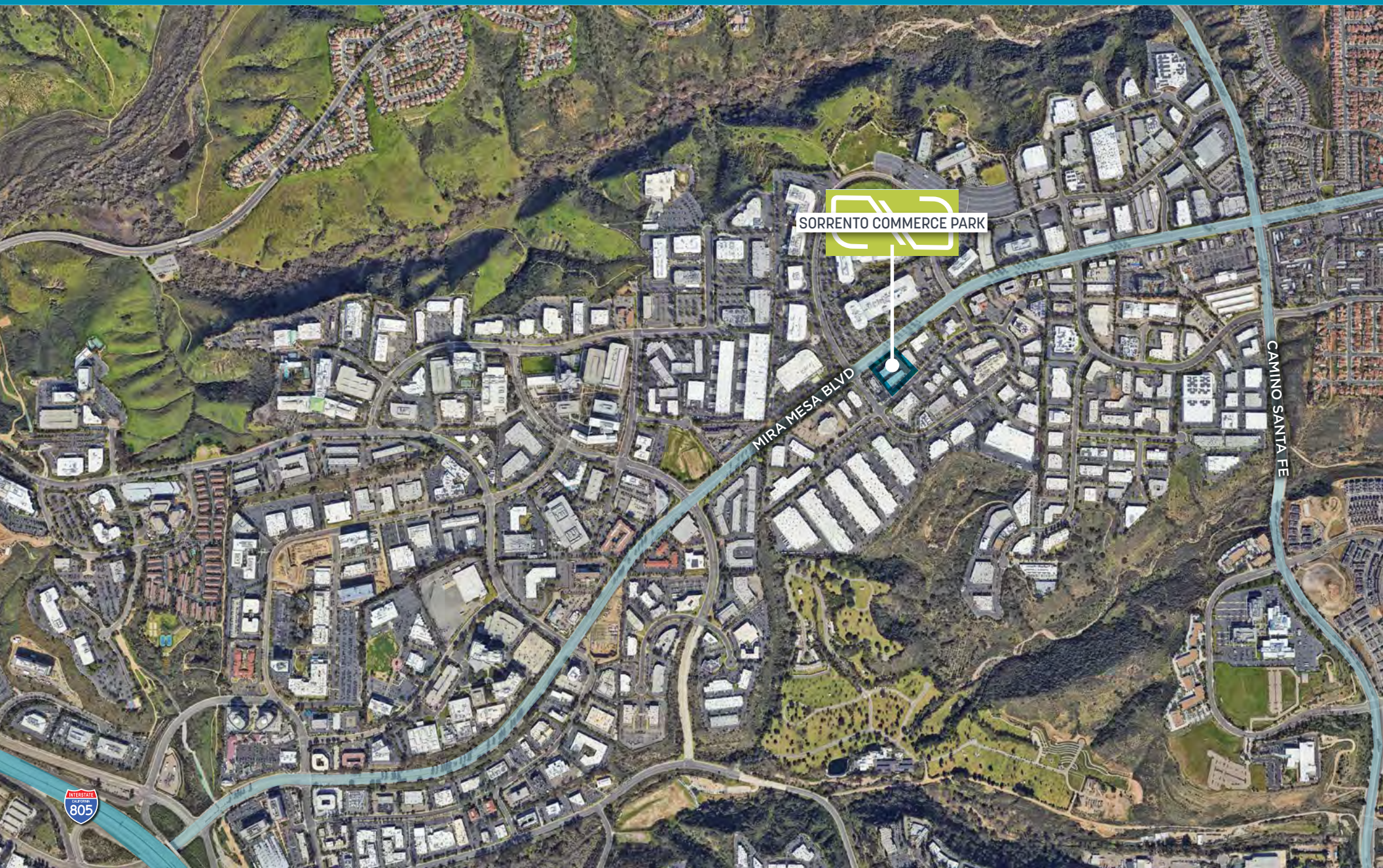
## 9540 WAPLES STREET - SUITE F

### SUITE DETAILS

- 1,594 SF
- Reception, open office, 3 private offices, 1 restroom, balance warehouse, 1 grade level loading door
- Lease rate: Negotiable
- Contiguous with Suite F for 3,203 SF



# SORRENTO COMMERCE PARK



SORRENTO COMMERCE PARK

MIRA MESA BLVD

CAMINO SANTA FE



# SORRENTO COMMERCE PARK





SORRENTO COMMERCE PARK

9540-9550 WAPLES STREET, SAN DIEGO, CA 92121

**BRANT ABERG, SIOR**  
858.546.5464  
brant.aberg@cushwake.com  
CA LIC. 01773573

**RYAN DOWNING, SIOR**  
858.546.5416  
ryan.downing@cushwake.com  
CA LIC. 01955032

**TRINITY CARSON**  
619.928.6034  
trinity.carson@cushwake.com  
CA LIC. 02343245

