

RETAIL AT
THE FINE ARTS BUILDING

232

232 EAST 59TH STREET

E59

NORTH BLOCK BETWEEN SECOND
AVENUE & THIRD AVENUE



CUSHMAN &
WAKEFIELD



2

232 E 59TH

SECOND FLOOR: 5,715 SF

CEILING HEIGHT: 10'9"

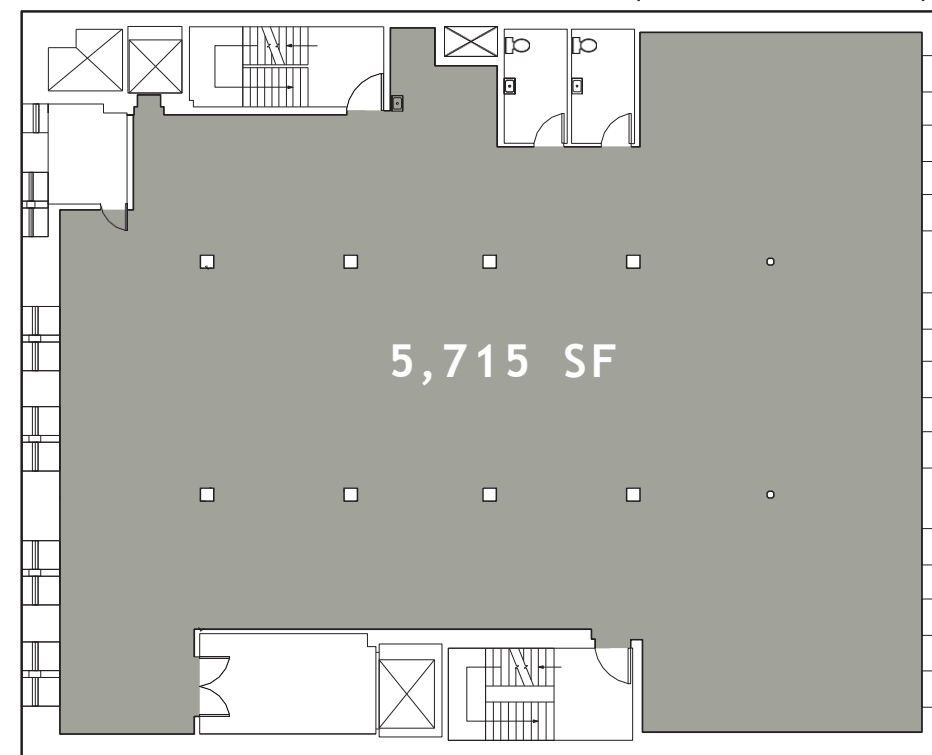
POSSESSION: IMMEDIATE

RENT: UPON REQUEST

COMMENTS:

- Suitable for retail, showroom, fitness & most dry uses
- High ceilings and upscale lighting fixtures in place
- Finished condition with windows on two sides

EAST 59TH STREET



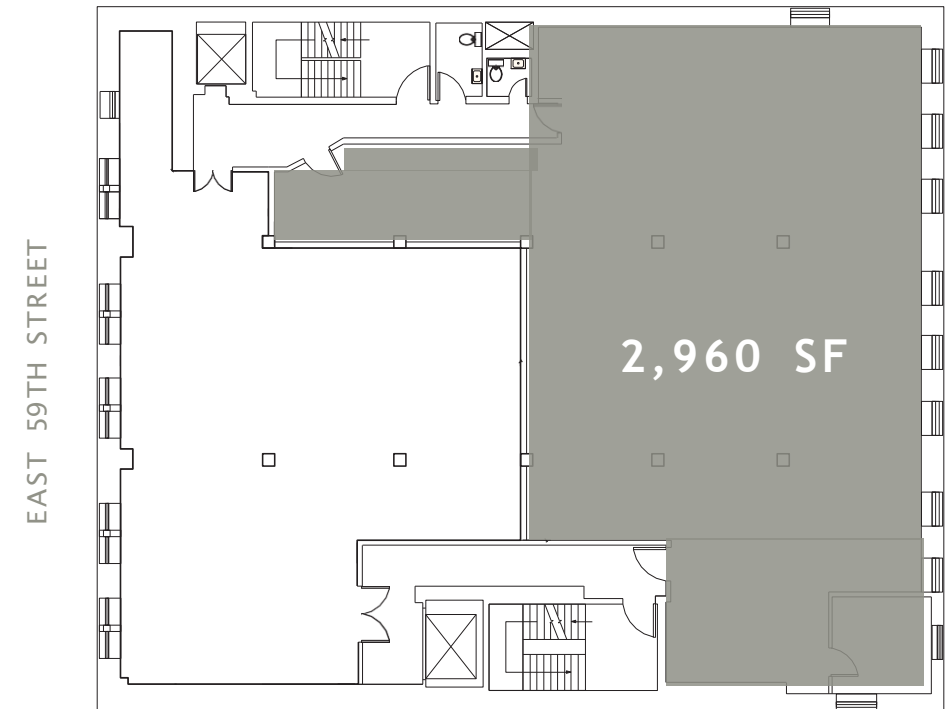
3

232 E 59TH

THIRD FLOOR: 2,960 SF
CEILING HEIGHT: 10'9"
POSSESSION: IMMEDIATE
RENT: UPON REQUEST

COMMENTS:

- **Excellent retail, showroom or office opportunity**
- **High ceilings and exposed wooden beams**
- **Open layout with a full wall of windows providing ample natural light**





4

232 E 59TH

FOURTH FLOOR: 2,435 SF

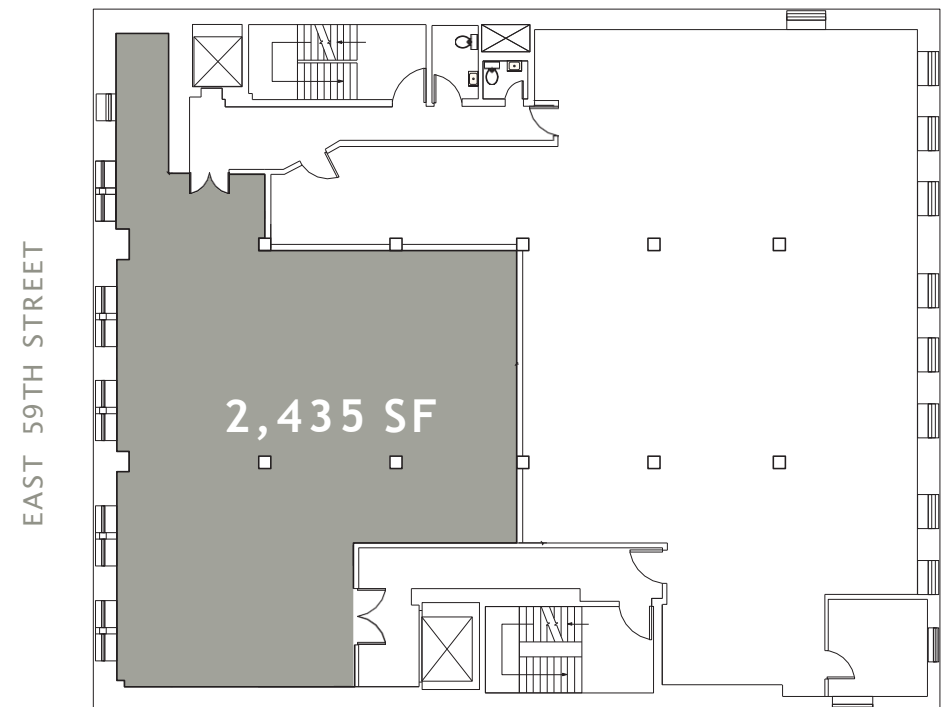
CEILING HEIGHT: 10'9"

POSSESSION: IMMEDIATE

RENT: UPON REQUEST

COMMENTS:

- **Bright retail opportunity with windows facing East 59th Street**
- **High ceilings**
- **Minimal columns**
- **Currently built with dedicated storage and private office areas**



CONTACT US

WITH ALL RETAIL & SHOWROOM LEASING INQUIRIES

ALAN SCHMERZLER

alan.schmerzler@cushwake.com
(212) 841-5930

CATHERINE MERCK

catherine.merck@cushwake.com
(212) 698-2621



©2023 Cushman & wakefield. All rights reserved. The material in this presentation has been prepared solely for information purposes and is strictly confidential. Any disclosure, use, copying or circulation of this presentation (or the information contained within it) is strictly prohibited, unless you have obtained cushman & wakefield's prior written consent. The views expressed in this presentation are the views of the author and do not necessarily reflect the views of cushman & wakefield. Neither this presentation nor any part of it shall form the basis of, or be relied upon in connection with any offer, or act as an inducement to enter into any contract or commitment whatsoever. No representation or warranty is given, express or implied, as to the accuracy of the information contained within this presentation, and cushman & wakefield is under no obligation to subsequently correct it in the event of errors.