

2516 FAIRWAY PARK DRIVE

2500-2530 FAIRWAY PARK DRIVE, HOUSTON, TX 77092



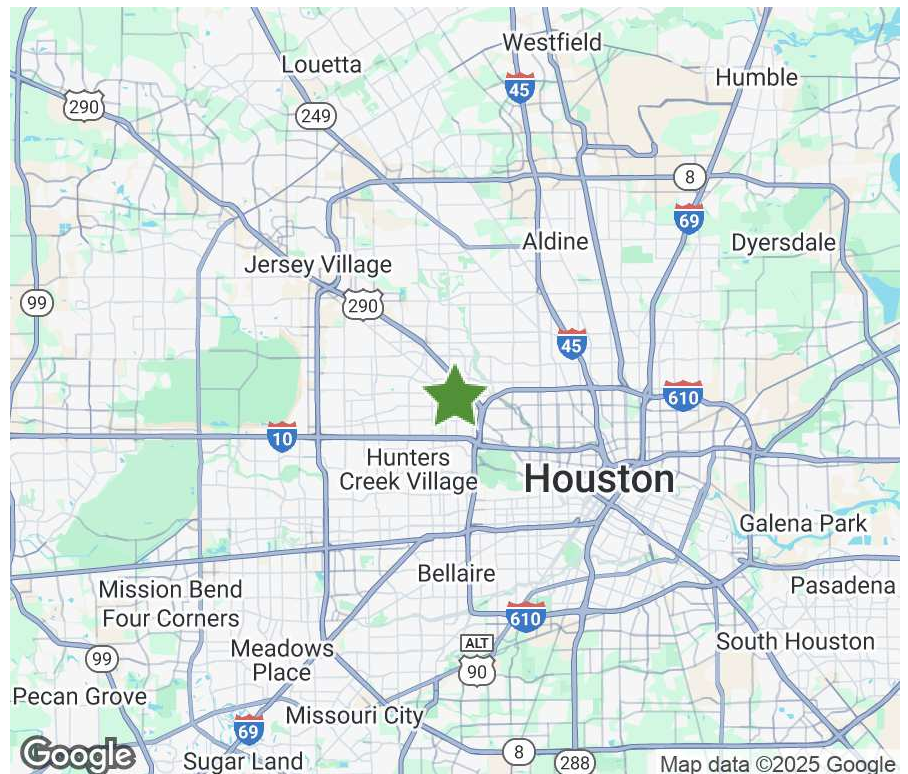
30,565 SF | FOR SUBLEASE

The property 2500 - 2530 Fairway Park Drive is a well-located warehouse facility within close proximity to Loop 610. This facility is situated between 290 and Hempstead Highway and is ideal for distribution in Houston's northwest corridor.

PROPERTY SPECIFICATIONS

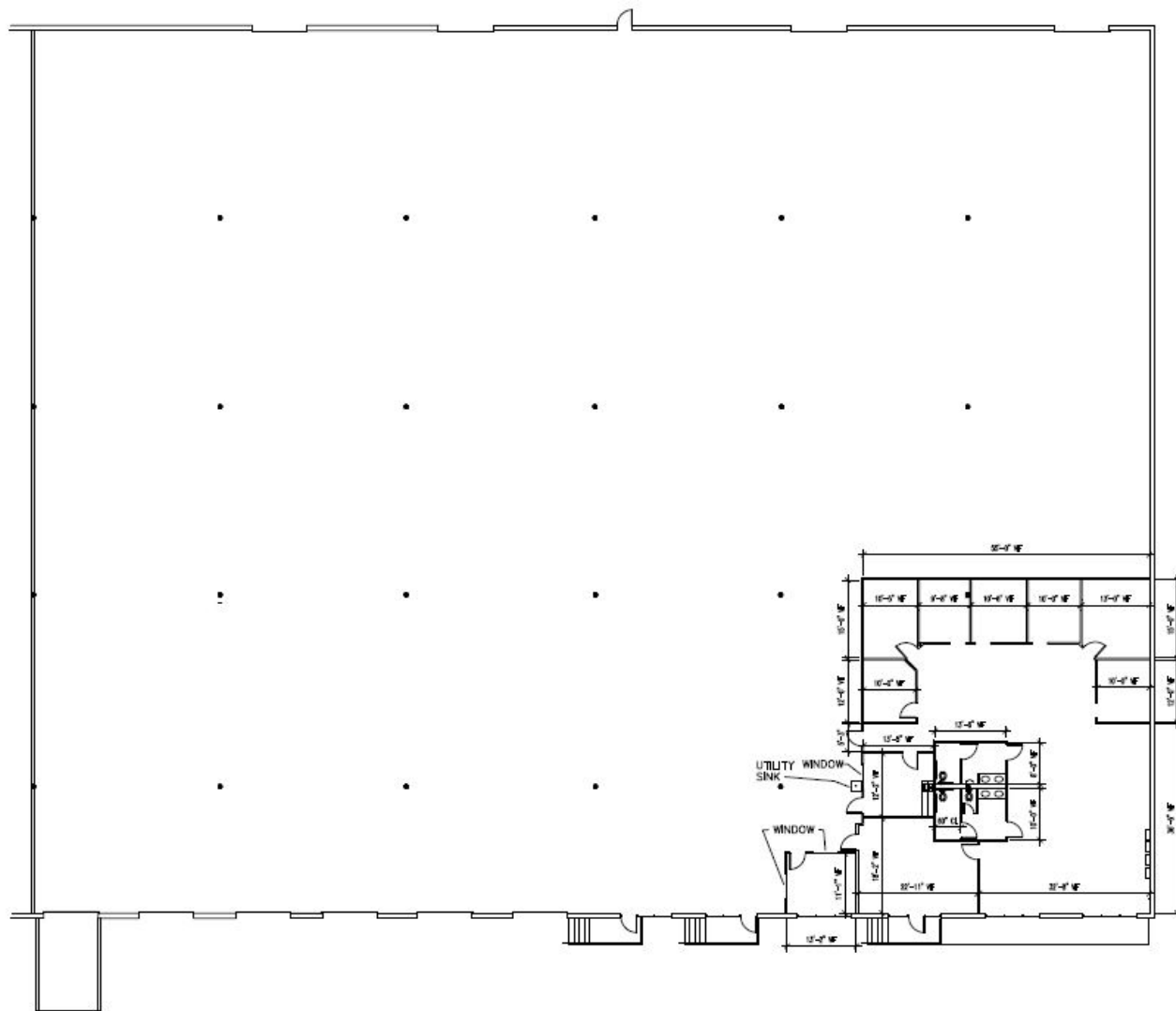
Available Space:	30,565 SF
Total Building Size:	213,638 SF
Submarket:	Northwest Houston
Office SF:	5,985
Warehouse SF:	24,580
Ceiling Height:	22
Dock High Doors:	5
Ramps:	1
Sprinkler:	NonESFR
Zoning:	N/A
Misc.	

**Sublease term thru
8/31/26. Longer-term
lease available directly
with Landlord.**



2516 FAIRWAY PARK DRIVE

36,550 SF | FOR SUBLEASE



BROKER CONTACT

David Munson, SIOR

Cushman & Wakefield
713.913.5473
david.munson@cushwake.com

Garrett Thomas

Cushman & Wakefield
713.260.0244
garrett.thomas@cushwake.com

OWNER CONTACT

Jake Allen

Regional Manager
312.344.4331
jallen@FIRT.com

