

For Sub-Lease

# 1050 Copperstone Drive

Pickering, Ontario



**29,047 SF**

Available

Freestanding Industrial  
Building for Sub-Lease

**1050 Copperstone Drive**  
Pickering, Ontario

## // Building Specs

- **Building Size:** 29,047 SF
- **Office Space:** 30%
- **Clear Height:** 24 ft.
- **Shipping:** 3 Truck Level, 1 Drive-In Door
- **Net Rent:** \$15.50 psf.
- **TMI:** TBD
- **Sub-Lease Expiry** December 1<sup>st</sup>, 2030

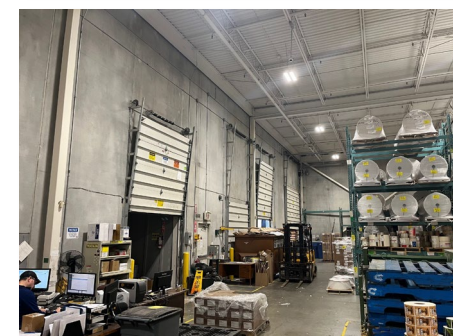
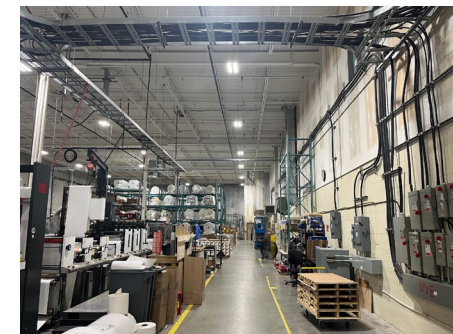
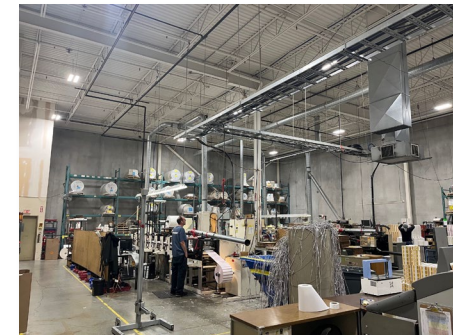
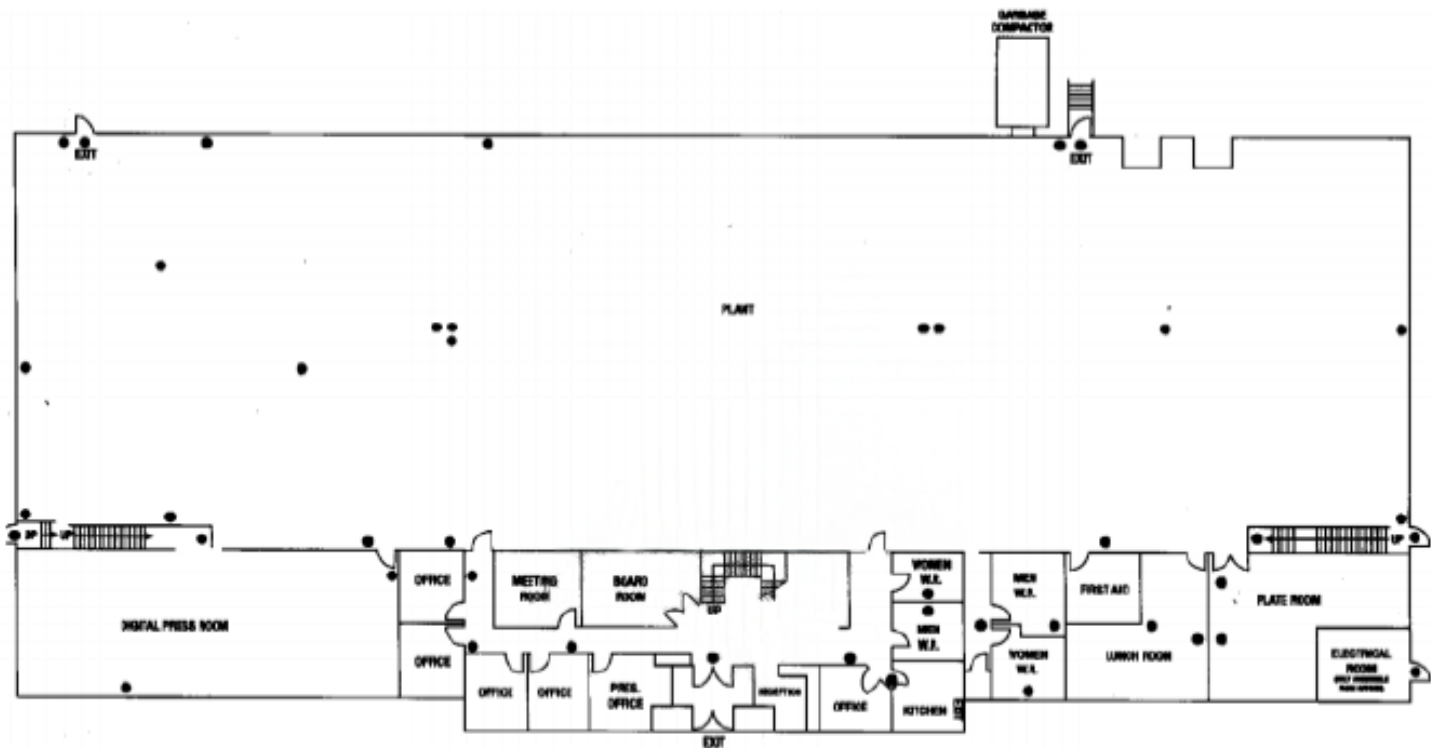
### Comments

- High Quality Industrial Building in Desirable Location
- Excellent Clear Height
- Heavy Power
- 1200 Amps, 600 Volts (Tenant to Verify)
- Clean Warehouse

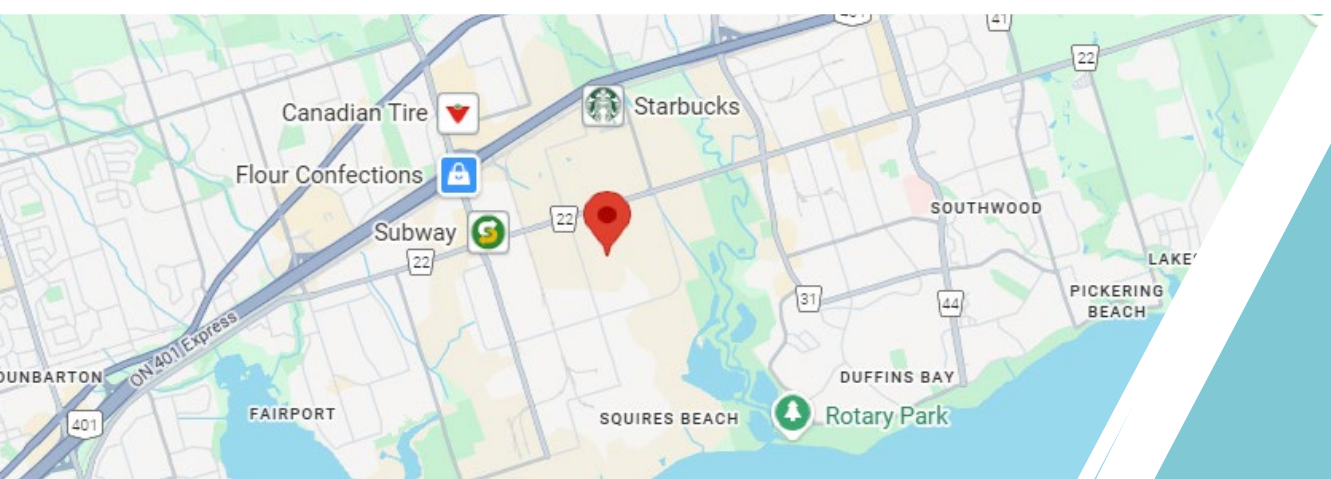


**1050 Copperstone Drive**  
Pickering, Ontario

# Building Plan & Interior Photos



# Property Aerial



Located With Easy  
Access to  
Highway 401

For more information, please contact the listing brokers:

**Mike Brown**

Senior Vice President  
Sales Representative  
Office and Industrial Sales and Leasing  
Mobile: +1 647 802 8824  
[mike.brown@cushwake.com](mailto:mike.brown@cushwake.com)

**Michael Wood**

Associate  
Sales Representative  
Mobile: +1 416 451 3535  
Direct: +1 416 756 5406  
[michael.wood2@cushwake.com](mailto:michael.wood2@cushwake.com)

1500 Don Mills Road, Suite 401  
Toronto, Ontario, M3B 3K4  
[cushmanwakefield.com](http://cushmanwakefield.com)