

For Sub-Lease

1050 Copperstone Drive

Pickering, Ontario



29,047 SF

Available

Freestanding Industrial
Building for Sub-Lease

1050 Copperstone Drive
Pickering, Ontario

// Building Specs

- **Building Size:** 29,047 SF
- **Office Space:** 30%
- **Clear Height:** 24 ft.
- **Shipping:** 3 Truck Level, 1 Drive-In Door
- **Net Rent:** \$15.50 psf.
- **TMI:** TBD
- **Sub-Lease Expiry** December 1st, 2030

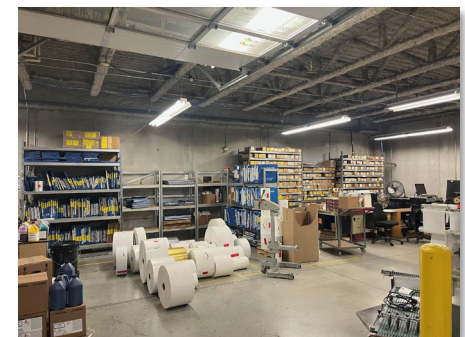
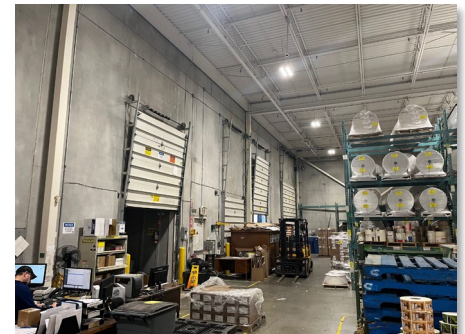
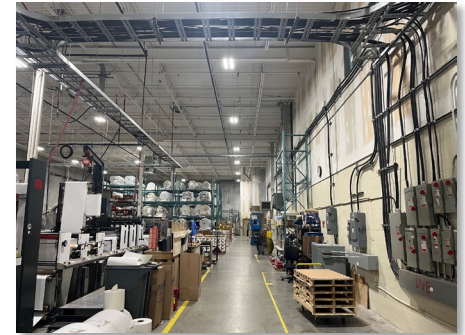
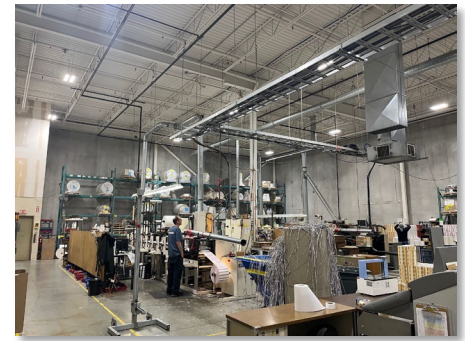
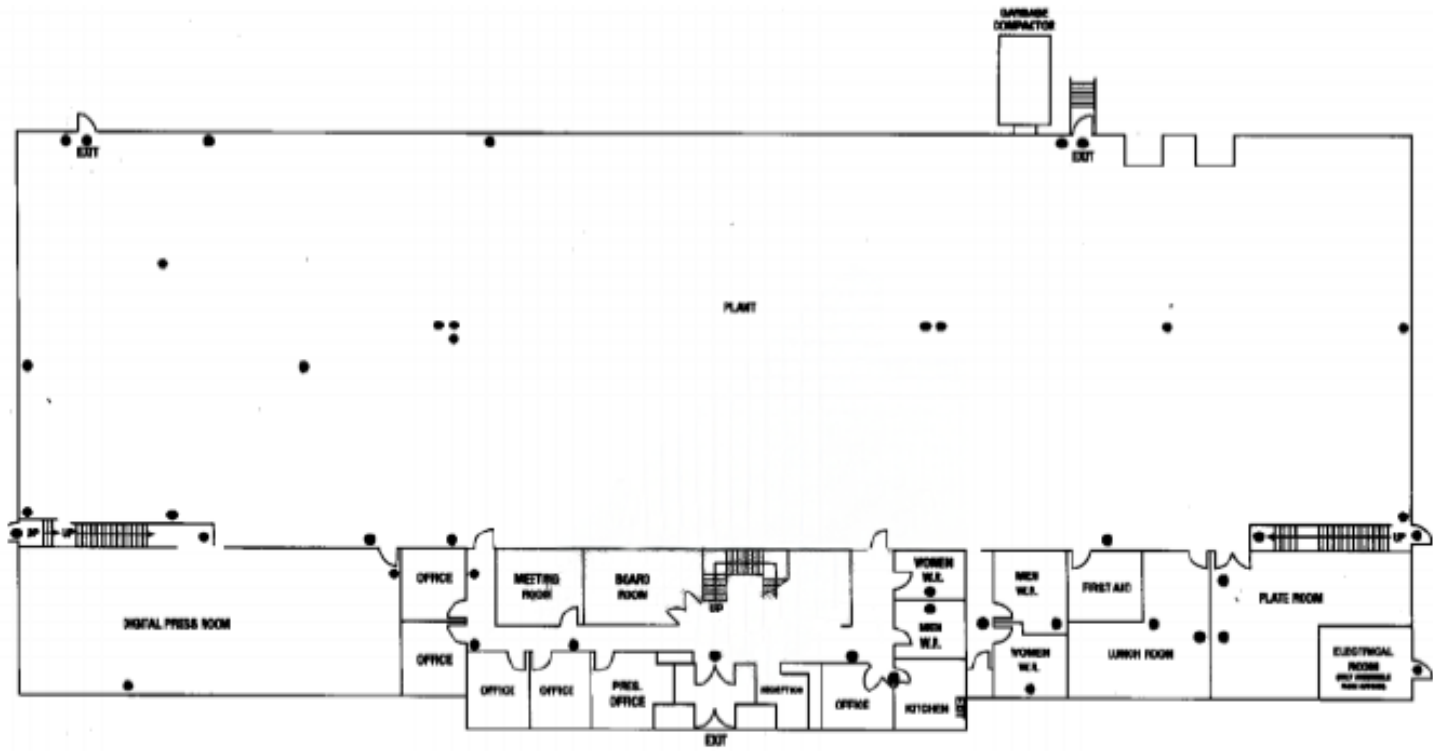
Comments

- High Quality Industrial Building in Desirable Location
- Excellent Clear Height
- Heavy Power
- 1200 Amps, 600 Volts (Tenant to Verify)
- Clean Warehouse



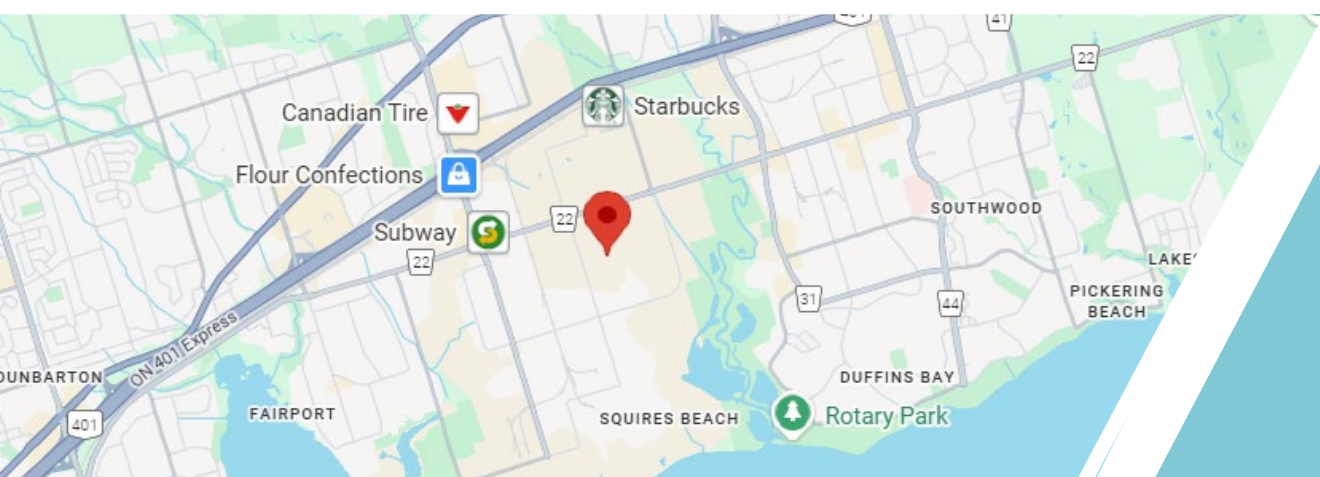
1050 Copperstone Drive
Pickering, Ontario

Building Plan & Interior Photos



1050 Copperstone Drive
Pickering, Ontario

Property Aerial



Located With Easy
Access to
Highway 401

For more information, please contact the listing brokers:

Mike Brown

Senior Vice President
Sales Representative
Office and Industrial Sales and Leasing
Mobile: +1 647 802 8824
mike.brown@cushwake.com

Michael Wood

Associate
Sales Representative
Mobile: +1 416 451 3535
Direct: +1 416 756 5406
michael.wood2@cushwake.com

1500 Don Mills Road, Suite 401
Toronto, Ontario, M3B 3K4
cushmanwakefield.com