

# HEMBREE PARK

245 Hembree Park Drive Roswell, GA 30076

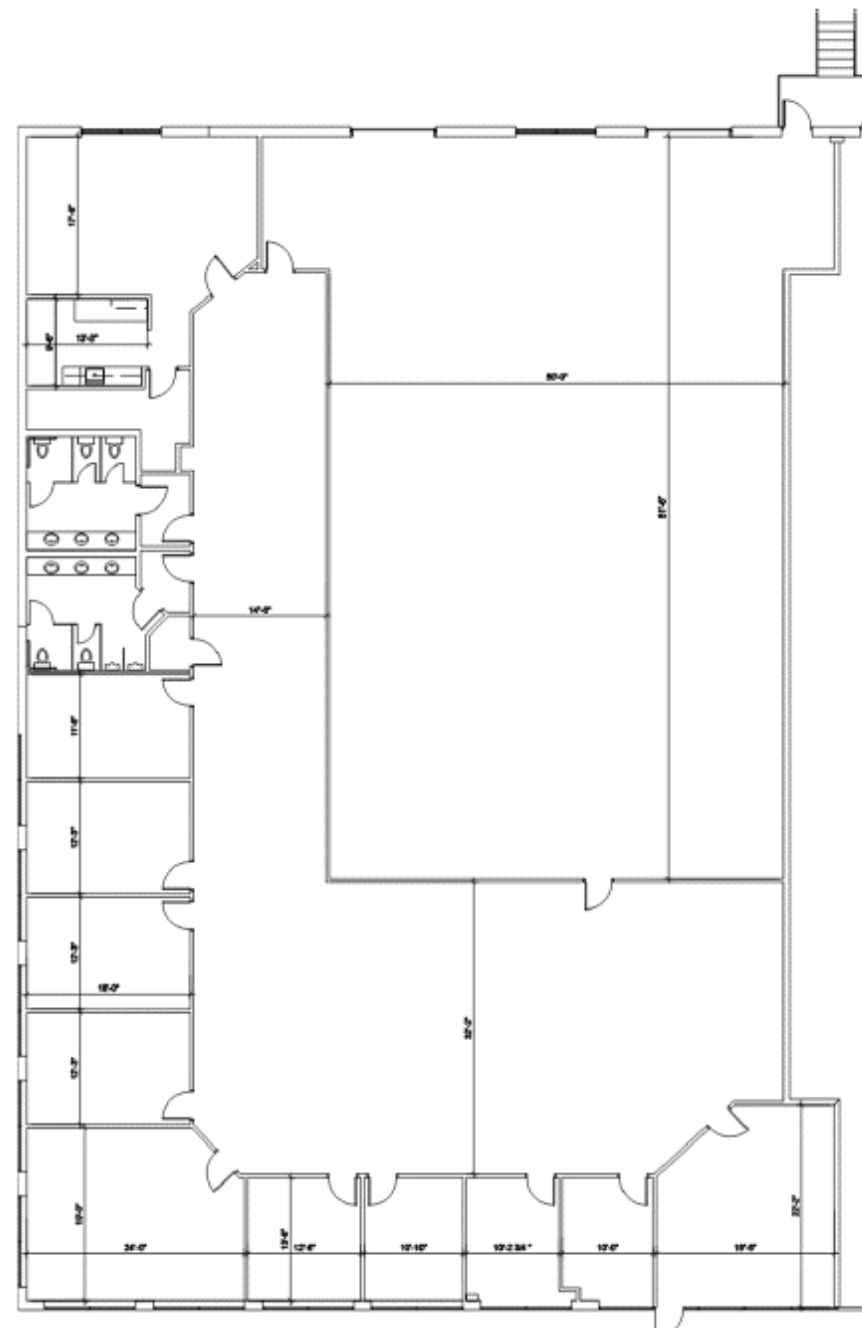
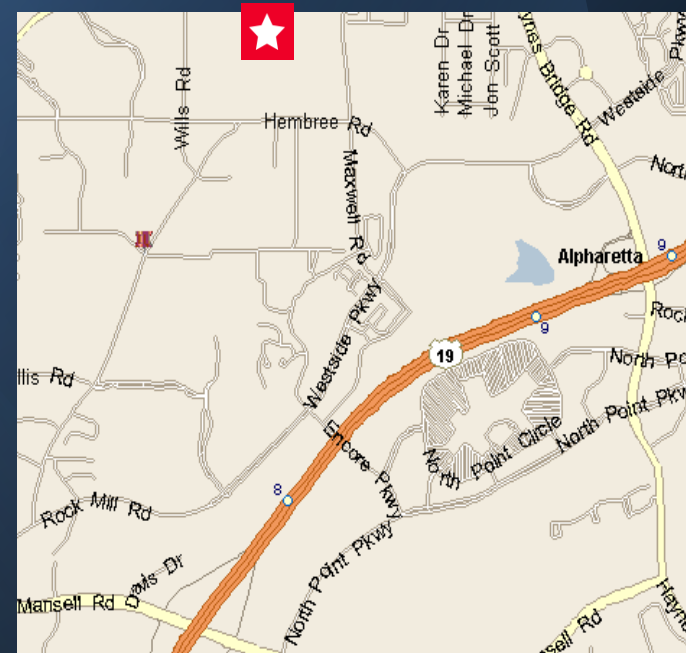
**FOR LEASE**

**11,232 SF | SUITE 90**



## Floor Plan – Suite 90

- 103,826 SF Total Building
- Built in 1999
- Three dock high doors
- 60% office 40% warehouse
- 24' clear height



©2022 Cushman & Wakefield. All rights reserved.  
This information has been obtained from sources believed to be reliable but has not been verified.  
NO WARRANTY OR REPRESENTATION, EXPRESS OR IMPLIED, IS MADE AS TO THE CONDITION OF THE PROPERTY (OR PROPERTIES) REFERENCED HEREIN OR AS TO THE ACCURACY OR COMPLETENESS OF THE INFORMATION CONTAINED HEREIN. AND SAME IS SUBMITTED SUBJECT TO ERRORS, OMISSIONS, CHANGE OF PRICE, RENTAL OR OTHER CONDITIONS, WITHDRAWAL WITHOUT NOTICE, AND TO ANY SPECIAL LISTING CONDITIONS IMPOSED BY THE PROPERTY OWNER(S). ANY PROJECTIONS, OPINIONS OR ESTIMATES ARE SUBJECT TO UNCERTAINTY AND DO NOT SIGNIFY CURRENT OR FUTURE PROPERTY PERFORMANCE.

**PAT MURPHY**  
Managing Director  
Direct: 404 682 3405  
Cellular: 770 853 8796

TARA HEALY  
Director  
Direct: 404 682 3430  
Cellular: 678 468 9133



1180 Peachtree St NE, Suite 3100  
Atlanta, Georgia 30309