

FOR LEASE

KENWOOD CORPORATE CENTER

BLUE ASH, OHIO 45242



KENWOOD CORPORATE CENTER



Located at 9395 Kenwood Road in Blue Ash Ohio, Kenwood Corporate Center sits directly off Ronald Regan Highway.

Monument signage on Kenwood Road as well as the opportunity for prominent building signage.

Full second floor available totaling 18,144 SF, that is divisible.

PROPERTY FEATURES

Building Size	34,052 SF	Signage	Building & Monument
Space Available	18,144 SF	Parking	5/1,000
Floors	2	Lease Rate	\$14.00 /SF Net
Year Built	2006	Operating Expense	\$8.00 /SF est.



KENWOOD CORPORATE CENTER



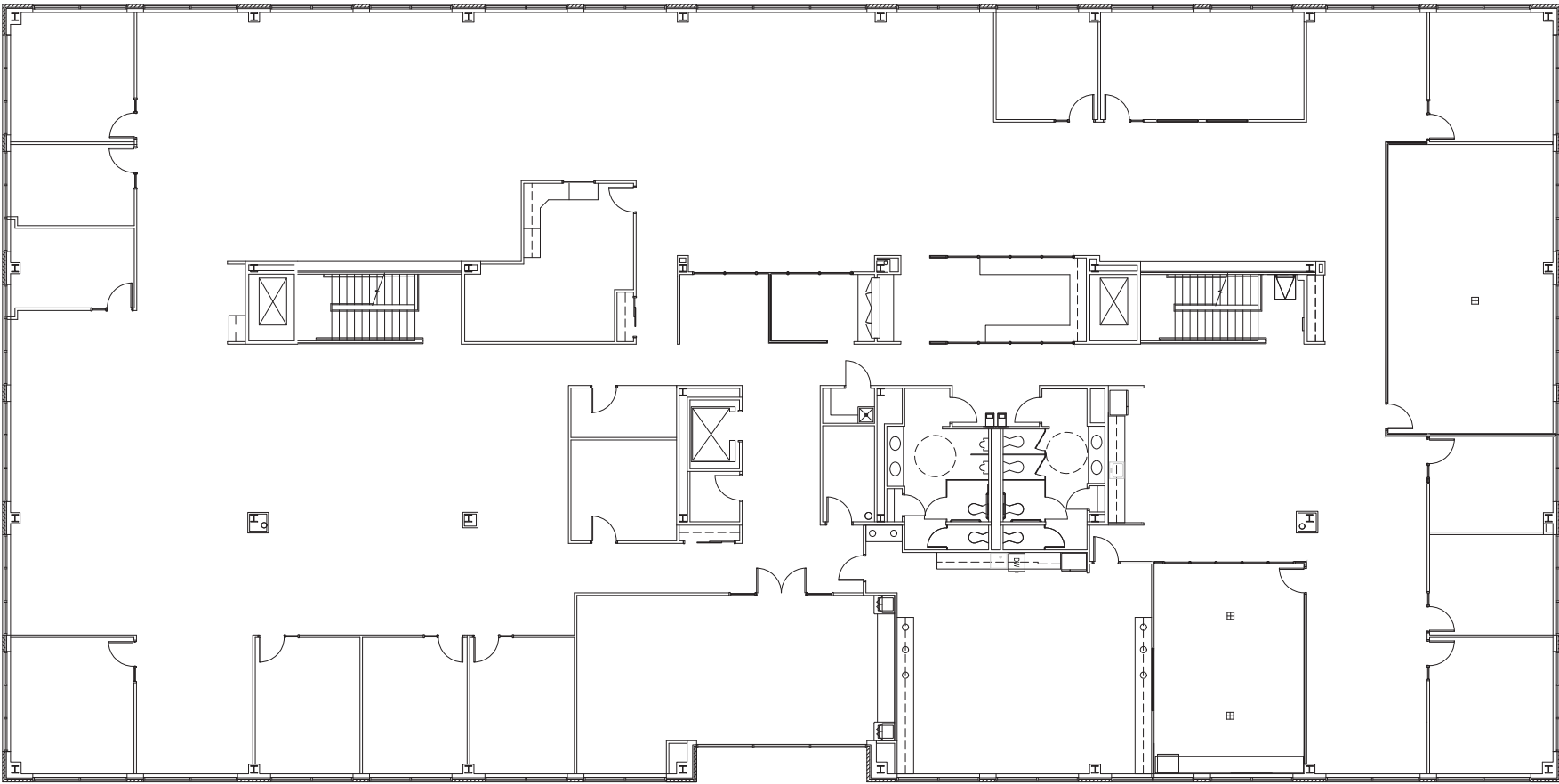
FULL SECOND FLOOR AVAILABLE



KENWOOD CORPORATE CENTER



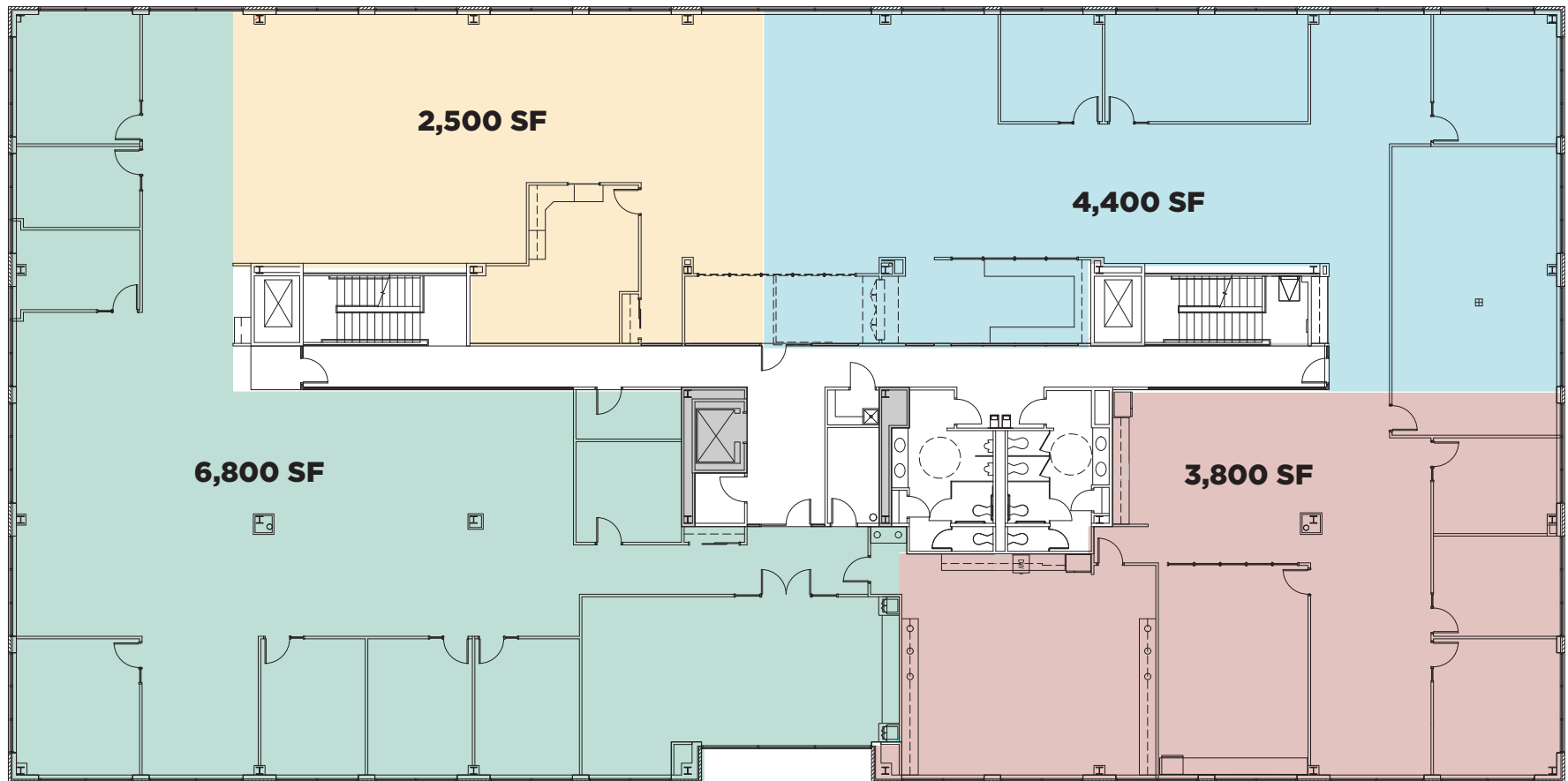
FLOOR 2 | 18,144 SF



KENWOOD CORPORATE CENTER



FLOOR 2 | DEMISING OPTIONS



Neighborhoods at Summit Park



Crossings of Blue Ash

Keystone Plaza

Downtown Blue Ash Redevelopment

49 Hundred



126

Kenwood Corporate Center

Blue Ash Quick Facts

13,369 Population	\$104,189 Median HH Income
	52% more than the national average
2,122 Total Businesses	36,601 Employees



KENWOOD CORPORATE CENTER





For more information, please contact:

Digger Daley
Senior Director
digger.daley@cushwake.com
+1 513 763 3028

Scott Abernethy, SIOR, CCIM
Senior Director
scott.abernethy@cushwake.com
+1 513 763 3013

201 E. Fourth Street, Suite 1800
Cincinnati, OH 45202
Main +1 513 421 4884
cincyofficeadvisors.com

©2025 Cushman & Wakefield. All rights reserved. The information contained in this communication is strictly confidential. This information has been obtained from sources believed to be reliable but has not been verified. NO WARRANTY OR REPRESENTATION, EXPRESS OR IMPLIED, IS MADE AS TO THE CONDITION OF THE PROPERTY (OR PROPERTIES) REFERENCED HEREIN OR AS TO THE ACCURACY OR COMPLETENESS OF THE INFORMATION CONTAINED HEREIN, AND SAME IS SUBMITTED SUBJECT TO ERRORS, OMISSIONS, CHANGE OF PRICE, RENTAL OR OTHER CONDITIONS, WITHDRAWAL WITHOUT NOTICE, AND TO ANY SPECIAL LISTING CONDITIONS IMPOSED BY THE PROPERTY OWNER(S). ANY PROJECTIONS, OPINIONS OR ESTIMATES ARE SUBJECT TO UNCERTAINTY AND DO NOT SIGNIFY CURRENT OR FUTURE PROPERTY PERFORMANCE.

