

# 13145 LAKEFRONT DRIVE

## EARTH CITY, MO



### PROPERTY HIGHLIGHTS

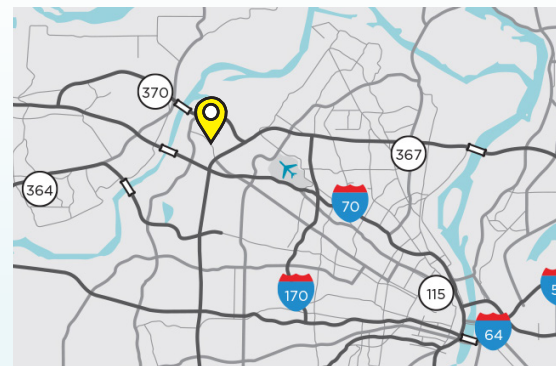
- Total Building Area: 235,000 SF
- Total Available Area: 56,307 SF
- Office Area: ±7,600 SF
- Clear Height: 24'
- Loading: Nine (9) Docks
- Column Spacing: 40' x 40'
- Building Depth: 280'
- Fire Suppression: ESFR
- Parking: .62/1,000 SF
- Lease Rate: \$5.50/SF, NNN

# 56,307 SF

## AVAILABLE FOR LEASE

### LOCATION

- Strategically located minutes from three interstates including I-270, I-70, and Hwy 370



**ED LAMPITT, SIOR, CCIM**  
Vice Chair  
+1 314 746 0383  
ed.lampitt@cushwake.com

**MATT EASTIN, SIOR, CCIM**  
Executive Director  
+1 314 746 0350  
matt.eastin@cushwake.com

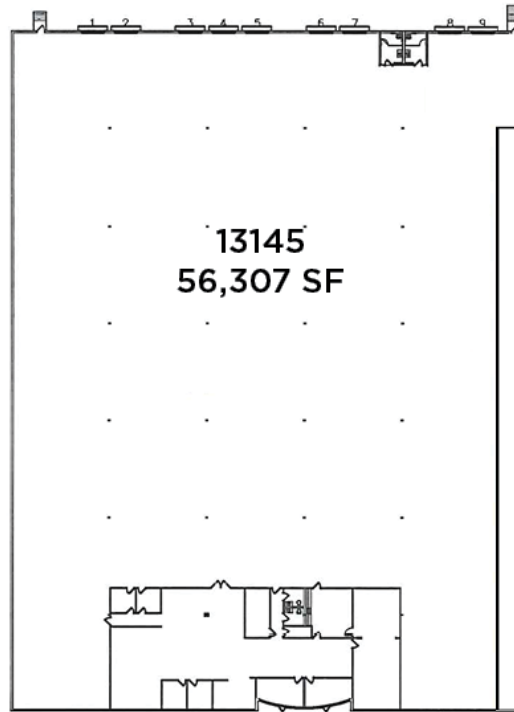
**OWNED & MANAGED BY**  
 **SEALY & COMPANY**

**LEASING BY**  
 **CUSHMAN & WAKEFIELD**

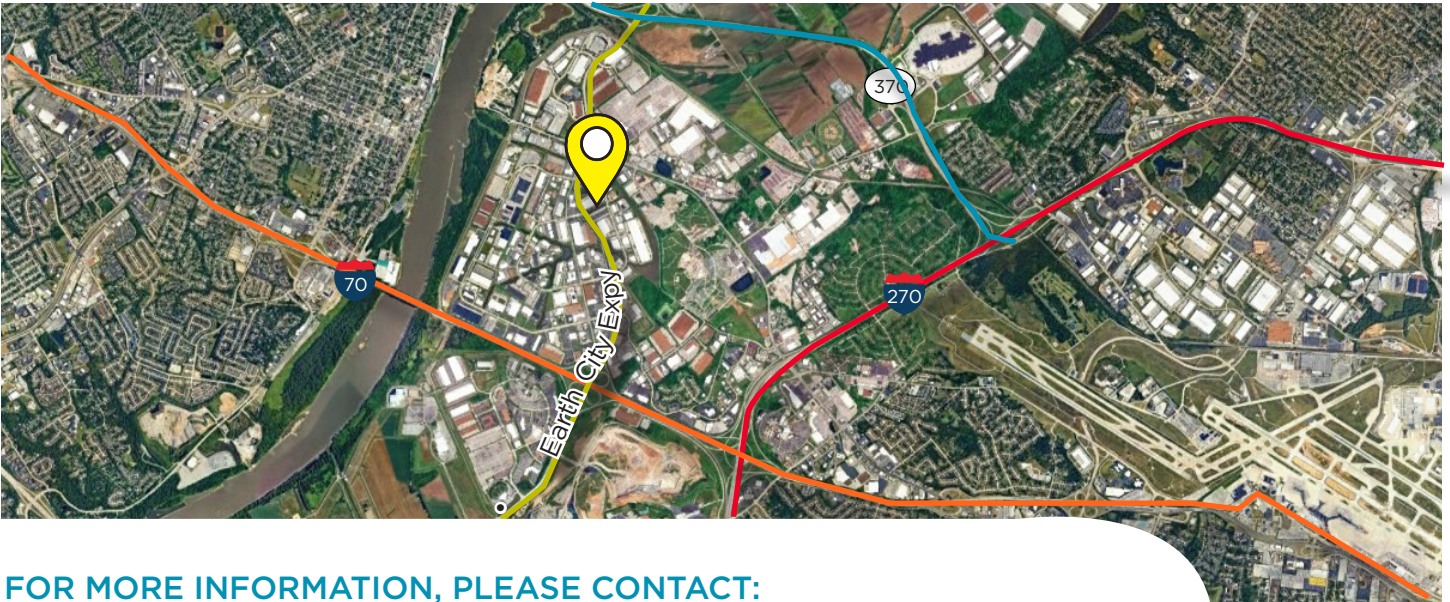
FOR LEASE  
**56,307 SF**

13145 LAKEFRONT DR | EARTH CITY, MO

## FLOOR PLAN



## AERIAL



### FOR MORE INFORMATION, PLEASE CONTACT:

**ED LAMPITT, SIOR, CCIM**  
Vice Chair  
+1 314 746 0383  
ed.lampitt@cushwake.com

**MATT EASTIN, SIOR, CCIM**  
Executive Director  
+1 314 746 0350  
matt.eastin@cushwake.com